



**THE DATASHEET OF
HR30-7R-12PD(71)**



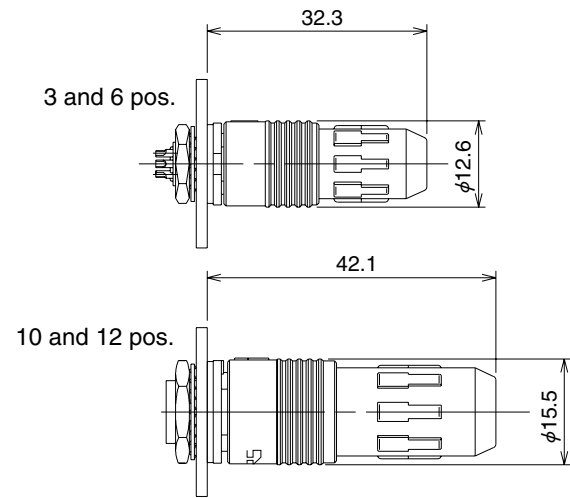
NEW

Miniature Waterproof Plastic Connectors

HR30 Series



Mated dimensions



■ Features

1. Small size

Short in length when fully terminated and mated.

2. Water and dust protected

IP67 protection rating: Complete protection against dust penetration and against water penetration when submerged 1 meter deep for half hour. Mated with corresponding connector or protective cap.

3. Simple pull lock release

Built-in lock/release mechanism securely locks mated connectors while allowing quick disconnection by simply pulling on the plug's release collar. Molded-in grooves prevent hand slippage when pulled.

The round configuration of the collar allows easy side-by-side panel mounting and will not snag on objects when the cable is pulled-out.

4. Light weight, corrosion resistant

Glass reinforced thermoplastic compounds and non-corrosive components are used in all assemblies.

5. Contact protection and self-alignment

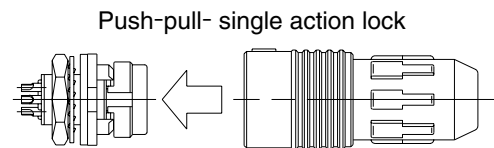
Multiple polarizing keys protect the contacts from misalignment or attempted insertion of the wrong connector, while assuring correct mating between the corresponding connectors.

6. Visual alignment indicators

Permanent alignment indicators in a contrasting color on all connectors aid in correct alignment and engagement.

7. Built-in cable strain relief

Lock/release operation



■ Applications

Test and measuring equipment, portable devices, instrumentation, industrial devices, recreational equipment, I/O applications and other applications requiring use of lightweight, corrosion resistant quick mate/ release cable connections.

■Product Specifications

| | | | | |
|---------|----------------|--|-----------------------------|----------------|
| Ratings | Current rating | 5A (3 pos.) 2A (6,10,12 pos.) | Operation Temperature Range | -25°C to +85°C |
| | Voltage rating | 100V AC,140V DC(3,6 pos.) 30V AC,42V DC(10,12 pos.) | Storage Temperature Range | -25°C to +85°C |

| Characteristic | Specification | Conditions |
|---------------------------------|--|--|
| 1.Contact resistance | 5m ohms max. (3 pos.) 15m ohms max. (Solder type: 6, 10, and 12 pos.) 30m ohms max. (Through hole type: 6 and 12 pos.) | 1A DC |
| 2.Insulation resistance | 1000M ohms min. | 100 V DC |
| 3.Withstanding voltage | No flashover or insulation breakdown | 300 V AC / one minute |
| 4.Vibration | No electrical discontinuity of 10 μs or more | Frequency: 10 to 55 Hz, single amplitude of 0.75 mm, 2 hours in each of the 3 directions |
| 5.Durability (mating/un-mating) | Contact resistance 10m ohms min.(3 pos.) Contact resistance 30m ohms min. (Solder type: 6, 10, and 12 pos.) Contact resistance 100m ohms min. (Through hole type: 6 and 12 pos.) | 1000 cycles |
| 6.Temperature cycle | Insulation resistance 100 M ohms min. | (-55°C: 30 minutes → Room temperature: 10 to 15 minutes → +85°C: 30 minutes → Room temperature: 10 to 15 minutes) for 5 cycles |
| 7.Humidity resistance | Insulation resistance 10M ohms min. (when humidity high) 100M ohms min. (when dry) | 96 hours at temperature of 40ohmsC and humidity of 90% to 95% |
| 8.Waterproof performance | No penetration inside. | While mated with corresponding or protective cap submerged at depth of 1m for half hour. |
| 9.Dust protection | | |

■Material

| Assembly | Component | Material | Finish | Remarks |
|-----------------------------|---------------|-------------------------------------|-----------------------|---------|
| Plug | Insulator | PPS | Black | UL94V-0 |
| | | PBT | Black | UL94V-0 |
| | | Polyacetal | Natural | — |
| | Gasket | Silicone rubber, chloroprene rubber | Red/Black | — |
| | Contacts | Brass, phosphor bronze | Gold plated | — |
| | Spring | Stainless steel | — | — |
| Receptacles | Insulator | PPS | Black | UL94V-0 |
| | Gasket | Chloroprene rubber | Black | — |
| | Contacts | Brass, phosphor bronze | Gold plated | — |
| | Hexagonal nut | Zinc alloy | Chromate | — |
| | Washer | Phosphor bronze | Nickel plated | — |
| Crimp contact (male/female) | Contacts | Phosphor bronze | Selective gold plated | — |

■Ordering information

HR 30 - 6 P A - 6 S C

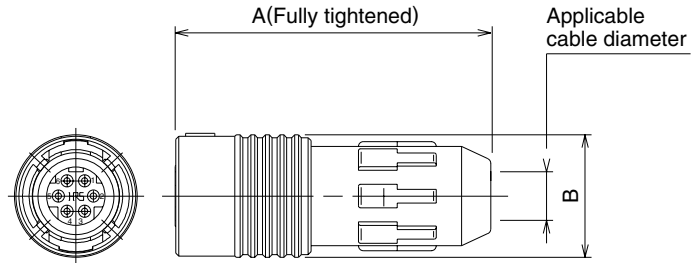
① ② ③ ④ ⑤ ⑥ ⑦

| | |
|---|---|
| ① Series name : HR30 | ⑤ Number of Contacts : 3, 6, 10 and 12 |
| ② Shell size : Outside diameter/plug mating side | ⑥ Contact type S : Female contact P : Male contact |
| ③ Connector type : P : Plug R : Receptacle J : Jack | ⑦ Contact wiring type Blank : Solder C : Crimping D : Through hole |
| ④ Variation Blank : Standard A : Fine wire | |

Plugs

Solder Type

HR30-6P-6S (Shown)



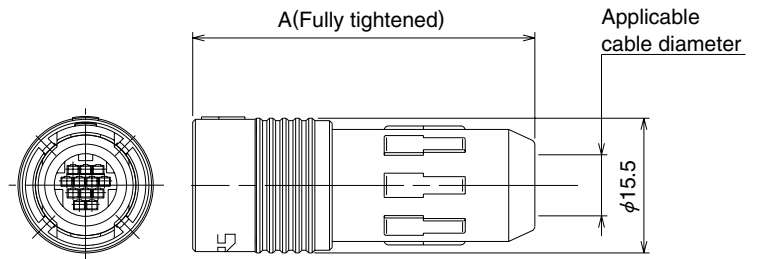
| Part Number | CL No. | A | B | Solder pot inner diameter | Applicable cable diameter range | Weight |
|-------------|------------|------|------|---------------------------|---------------------------------|--------|
| HR30-6P-3S | 130-0004-1 | 29.8 | 12.6 | 1.1 mm | 4.2 to 5 | 4g |
| HR30-6P-6S | 130-0010-4 | | | 0.8 mm | | |
| HR30-6P-6P | 130-0009-5 | 30.3 | | 1.1 mm | 3.5 to 4.3 | |
| HR30-6PA-3S | 130-0021-0 | 29.8 | | 0.8 mm | | |
| HR30-6PA-6S | 130-0019-9 | 30.3 | | | | |
| HR30-6PA-6P | 130-0020-8 | | | | | |
| HR30-7P-12S | 130-0027-7 | 39.8 | 15.5 | 0.6 mm | 6.2 to 7 | 6.7g |
| HR30-8P-12P | 130-0026-4 | | | | | |

Crimp Type

HR30-7P-12SC (Shown)



Shown with terminated and installed contacts.



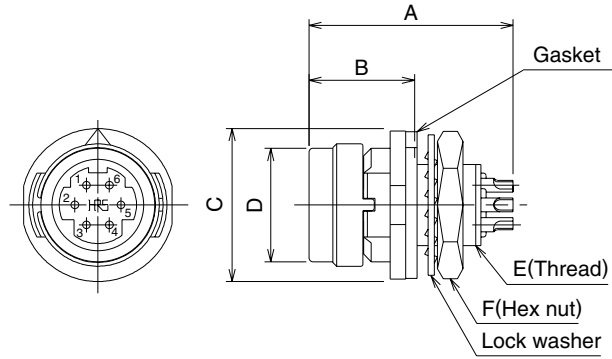
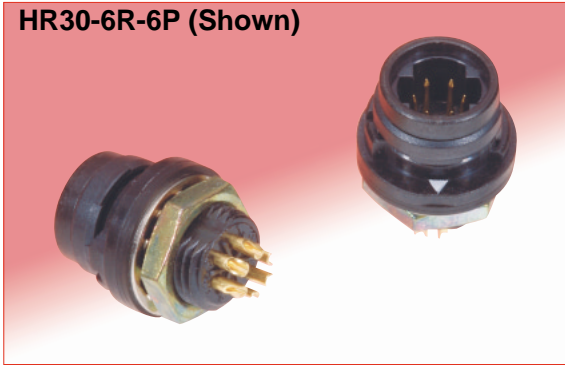
| Part Number | CL No. | A | Crimp contact | Applicable cable diameter range | Weight |
|--------------|------------|------|---------------|---------------------------------|--------|
| HR30-7P-10SC | 130-0013-2 | 39.8 | HR30-SC-211 | 6.2 to 7 | 6g |
| HR30-7P-12SC | 130-0014-5 | | | | |
| HR30-8P-12PC | 130-0015-8 | | HR30-PC-211 | | |

Note: Crimp contacts are not included. Please order applicable contacts separately.

■ Receptacles

● Solder Type

HR30-6R-6P (Shown)



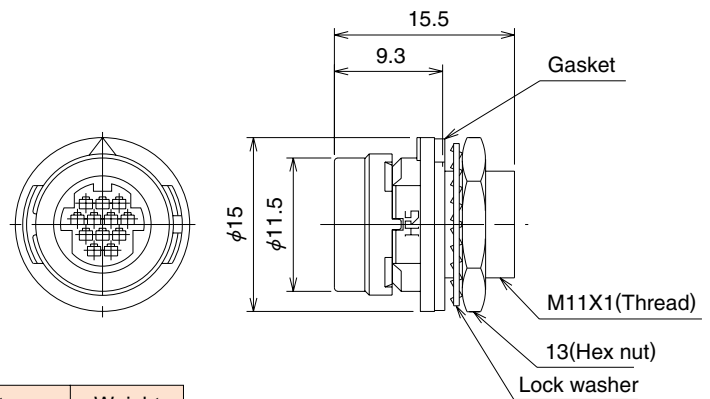
| Part Number | CL No. | A | B | C | D | E | F | Solder pot inner diameter | Weight |
|-------------|------------|------|-----|----|------|---------|----|---------------------------|--------|
| HR30-6R-3P | 130-1003-4 | 16 | 8.3 | 12 | 8.9 | M8×0.75 | 10 | 1.1mm | 2g |
| HR30-6R-6P | 130-1009-0 | | | | | | | 0.8mm | |
| HR30-6R-6S | 130-1008-8 | 18.4 | 9.3 | 15 | 11.5 | M11×1 | 13 | 0.6mm | 3.4g |
| HR30-7R-12P | 130-1016-6 | 18.6 | | | | | | | |
| HR30-8R-12S | 130-1018-1 | 18.6 | | | | | | | |

● Crimp Type

HR30-7R-12PC (Shown)



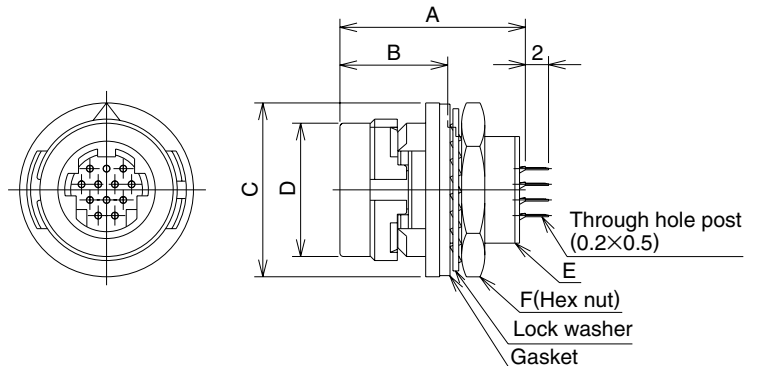
Shown with terminated and installed contacts.



| Part Number | CL No. | Crimp contact | Weight |
|--------------|------------|---------------|--------|
| HR30-7R-10PC | 130-1012-5 | HR30-PC-211 | 3g |
| HR30-7R-12PC | 130-1013-8 | | |
| HR30-8R-12SC | 130-1014-0 | HR30-SC-211 | |

● Through hole Type

HR30-8R-12SD (Shown)

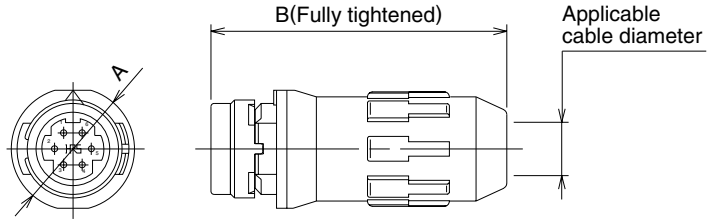


| Part Number | CL No. | A | B | C | D | E | F | Weight |
|--------------|------------|------|-----|----|------|---------|----|--------|
| HR30-6R-6PD | 130-1020-3 | 14.9 | 8.3 | 12 | 8.9 | M8×0.75 | 10 | 2g |
| HR30-6R-6SD | 130-1021-6 | 15.2 | | | | | | |
| HR30-7R-12PD | 130-1017-9 | 16 | 9.3 | 15 | 11.5 | M11×1 | 13 | 3.4g |
| HR30-8R-12SD | 130-1019-4 | | | | | | | |

■Jacks

●Solder Type

HR30-6J-6P (Shown)



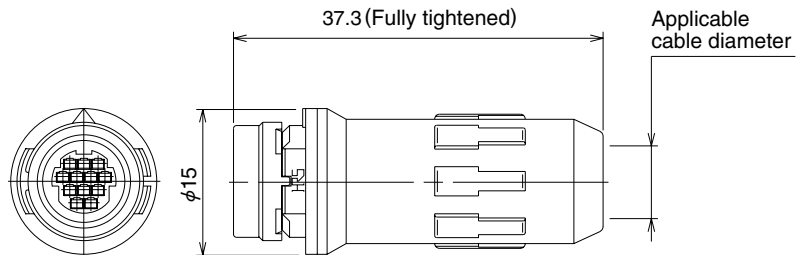
| Part Number | CL No. | A | B | Applicable cable diameter range | Solder pot inner diameter | Weight |
|-------------|------------|----|------|---------------------------------|---------------------------|--------|
| HR30-6J-6P | 130-2009-6 | 12 | 28.9 | 4.2 to 5 | 0.8 mm | 3g |
| HR30-6JA-6P | 130-2018-7 | | | 3.5 to 4.3 | | |
| HR30-7J-12P | 130-2020-9 | 15 | 37.3 | 6.2 to 7 | 0.6 mm | 5.7g |
| HR30-8J-12S | 130-2019-0 | | | | | 5.9g |

●Crimp Type

HR30-7J-12PC (Shown)



Shown with terminated and installed contacts.



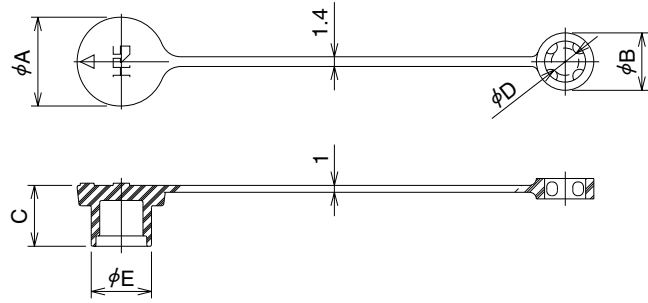
| Part Number | CL No. | Crimp contact | Applicable cable diameter range | Weight |
|--------------|------------|---------------|---------------------------------|--------|
| HR30-7J-10PC | 130-2015-9 | HR30-PC-211 | 6.2 to 7 | 5g |
| HR30-7J-12PC | 130-2017-4 | | | |
| HR30-8J-12SC | 130-2016-1 | HR30-SC-211 | | |

Note: Crimp contacts are not included. Please order applicable contacts separately.

■ Caps

● For Plugs

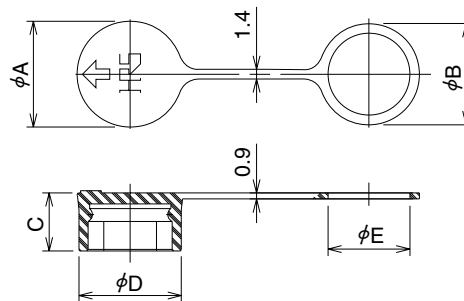
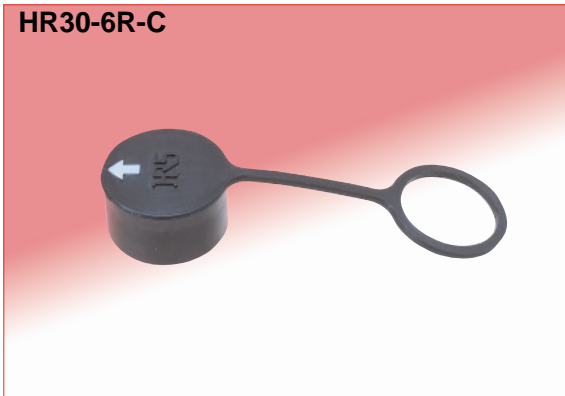
HR30-6P-C



| Part Number | CL No. | Applicable connector | A | B | C | D | E | Weight |
|-------------|------------|----------------------|----|------|------|---|------|--------|
| HR30-6P-C | 130-3000-7 | HR30-6P-3S | 13 | 8.4 | 8.9 | 4 | 8.8 | 1g |
| | | HR30-6P-6S | | | | | | |
| | | HR30-6P-6P | | | | | | |
| | | HR30-6PA-3S | | | | | | |
| | | HR30-6PA-6S | | | | | | |
| | | HR30-6PA-6P | | | | | | |
| HR30-7P-C | 130-3004-8 | HR30-7P-10SC | 16 | 10.4 | 10.5 | 6 | 11.4 | 2g |
| | | HR30-7P-12S | | | | | | |
| | | HR30-7P-12SC | | | | | | |
| HR30-8P-C | 130-3003-5 | HR30-8P-12P | 16 | 10.4 | 10.5 | 6 | 11.4 | 2g |
| | | HR30-8P-12PC | | | | | | |

● For Receptacle

HR30-6R-C

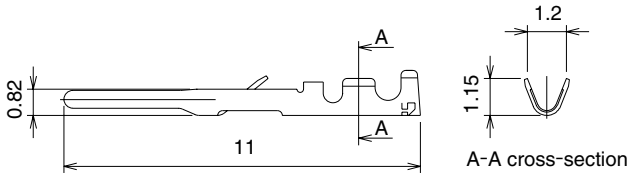


| Part Number | CL No. | Applicable connector | A | B | C | D | E | Weight |
|--------------|------------|----------------------|------|------|-----|------|------|--------|
| HR30-6R-C | 130-3001-0 | HR30-6R-3P | 12.6 | 11.8 | 7.5 | 12.1 | 9.1 | 1g |
| | | HR30-6R-6P | | | | | | |
| | | HR30-6R-6PD | | | | | | |
| | | HR30-6R-6S | | | | | | |
| | | HR30-6R-6SD | | | | | | |
| HR30-7R-C | 130-3002-2 | HR30-7R-10PC | 15.5 | 14.8 | 8.5 | 15 | 12.1 | |
| | | HR30-7R-12P | | | | | | |
| | | HR30-7R-12PC | | | | | | |
| | | HR30-7R-12PD | | | | | | |
| | | HR30-8R-12S | | | | | | |
| | | HR30-8R-12SC | | | | | | |
| HR30-8R-12SD | | | | | | | | |

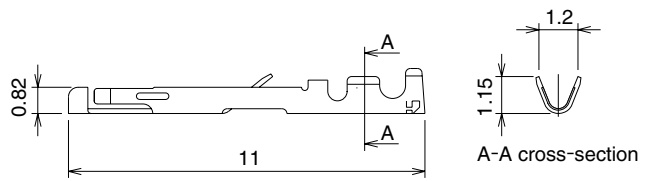
Note : When using these caps, do not use the gasket that is normally supplied with the receptacle. The "B" diameter end of the receptacle cap will serve as the gasket.

■ Crimp Contacts

Male contact



Female contact

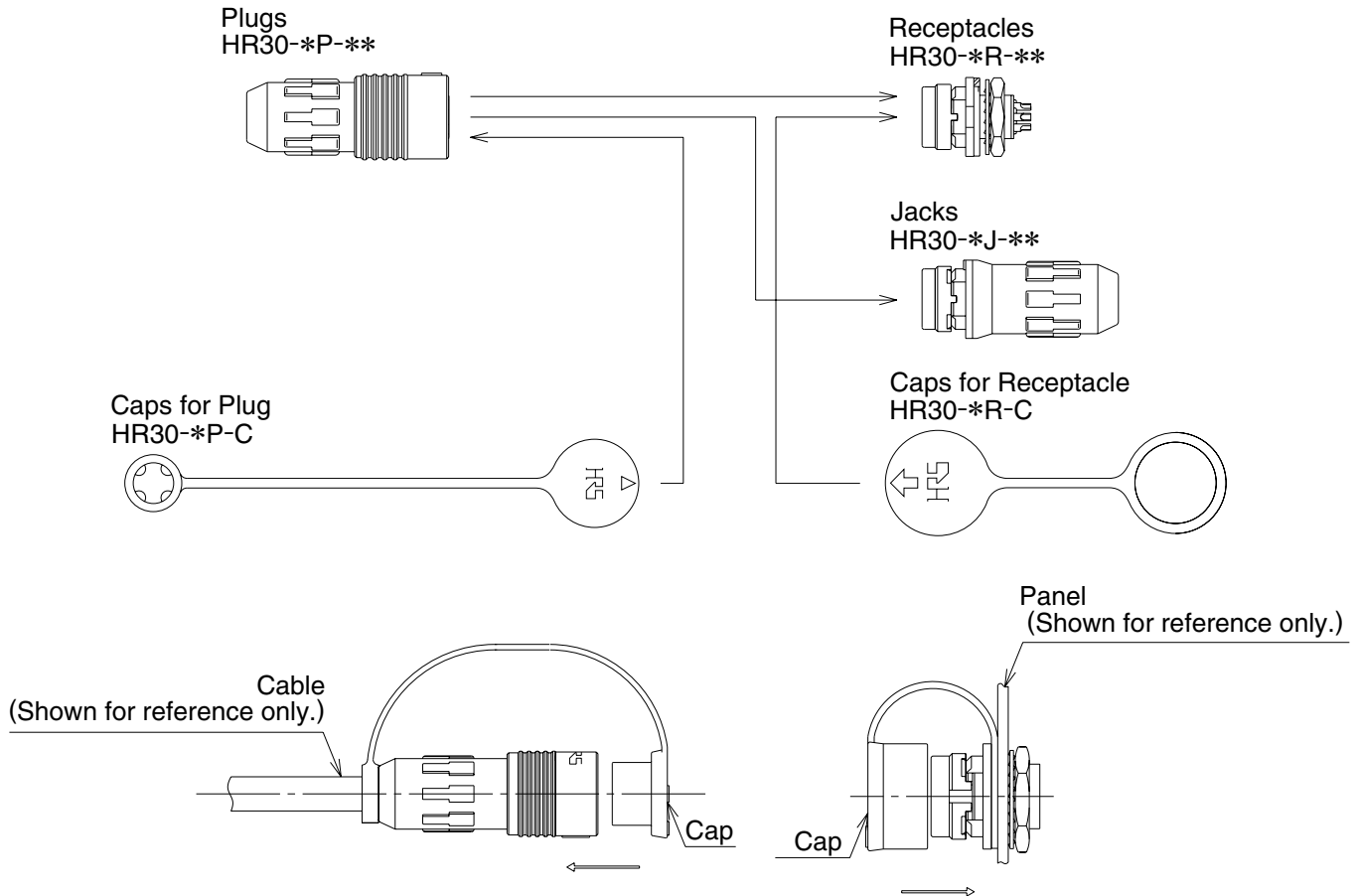


| Part Number | CL No. | Packaging type | Weight |
|-------------|------------|----------------|----------------|
| HR30-PC-111 | 130-0022-3 | 100pcs/bag | 0.03g/1per pin |
| HR30-PC-211 | 130-0016-0 | 10,000pcs/reel | 0.03g/1per pin |

| Part Number | CL No. | Packaging type | Weight |
|-------------|------------|----------------|-------------|
| HR30-SC-111 | 130-0023-6 | 100pcs/bag | 0.03g/1 pin |
| HR30-SC-211 | 130-0017-3 | 10,000pcs/reel | 0.03g/1 pin |

Note : Use wire size AWG 26 to 30 with a jacket diameter of 1 mm max.

◆ Connecting Combinations



Note 1 : When selecting connectors, take into account the shell size, contact count and gender of the contacts.

Note 2 : When using the protective caps for the receptacles, do not use the gaskets normally supplied with the receptacle. Protective caps must be fully inserted to assure specified IP67 water and dust protection.

◆Applicable Fixtures

●Solder termination fixture

| Part Number | CL No. | Applicable Connectors |
|------------------|------------|---|
| HR30-6P-3S-T01 | 150-0220-1 | HR30-6P-3S HR30-6PA-3S |
| HR30-6P-6S-T01 | 150-0214-9 | HR30-6P-6S HR30-6PA-6S |
| HR30-6P-6P-T01 | 150-0221-4 | HR30-6P-6P HR30-6PA-6P |
| HR30-7P-10SC-T01 | 150-0228-3 | HR30-7P-10SC |
| HR30-7P-12SC-T01 | 150-0223-0 | HR30-7P-12S HR30-7P-12SC |
| HR30-8P-12PC-T01 | 150-0227-0 | HR30-8P-12P HR30-8P-12PC |
| HR30-6R-3P-T01 | 150-0225-5 | HR30-6R-3P |
| HR30-6R-6P-T01 | 150-0218-0 | HR30-6R-6P HR30-6J-6P HR30-6JA-6P |
| HR30-6R-6S-T01 | 150-0222-7 | HR30-6R-6S |
| HR30-7J-10PC-T01 | 150-0231-8 | HR30-7J-10PC |
| HR30-7J-12PC-T01 | 150-0230-5 | HR30-7J-12PC |
| HR30-8J-12SC-T01 | 150-0226-8 | HR30-8J-12SC |

Note : The back shell tightening collar is used to tighten the back shell to the specified torque.
Refer to assembly procedures.

●Tightening collar for back shell

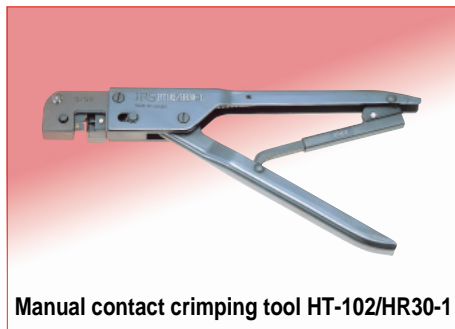
| Part Number | CL No. | Applicable Connectors |
|-------------|------------|-----------------------|
| HR30-6P-T02 | 150-0216-4 | 3 and 6 pos. |
| HR30-8P-T02 | 150-0224-2 | 10 and 12 pos. |

Note: The back shell tightening collar is used to tighten the back shell to specified torque.
Refer to assembly procedures.



■Applicable Tools

| Type | Description | Part Number | CL No. | Applicable contact | Applicable wire |
|-----------------|----------------------------|---------------|------------|----------------------------|-----------------|
| Manual | Manual crimping tool | HT-102/HR30-1 | 150-0229-6 | HR30-SC-111 | AWG#26~#30 |
| | | | | HR30-PC-111 | |
| Automatic | Automatic crimping machine | CM-105 | 901-0005-4 | — | — |
| | Applicator | AP105-HR30-1 | 901-2015-9 | HR30-SC-211 HR30-PC-211 | AWG#26~#30 |
| Extraction tool | | HR30-TP | 150-0219-2 | HR30-SC-111 | — |
| | | | | HR30-SC-211 | — |
| | | | | HR30-PC-111 | — |
| | | | | HR30-PC-211 | — |



Manual contact crimping tool HT-102/HR30-1

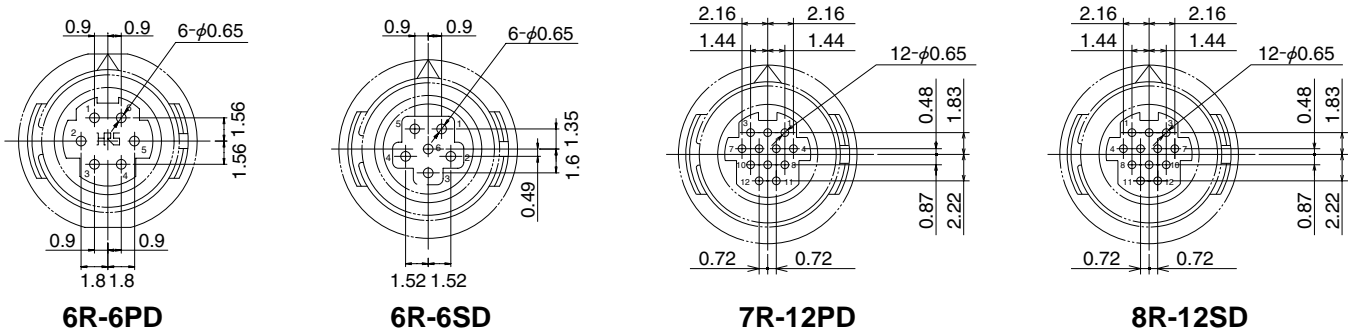


Automatic contact crimping machine CM-105



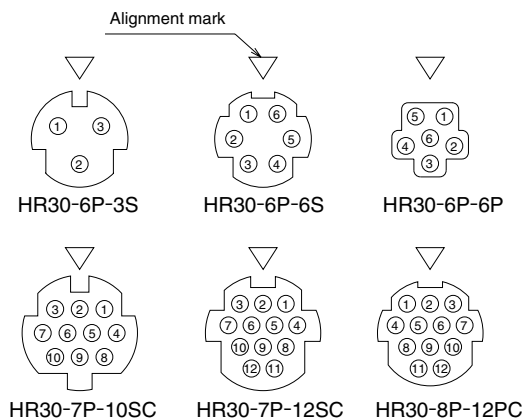
Contact extraction tool HR30-TP

◆Receptacle, Board Mounting Through Hole Pattern

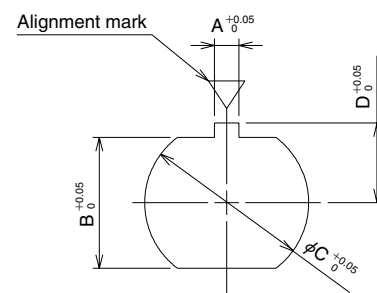


- Notes
- 1.The receptacle through hole configuration depicts a view from the mating side of the connector.
 - 2.The recommended board maximum thickness :1.2 mm.
 - 3.Tolerance of +0.03 mm is recommended for the plated through hole location.
Tolerance of +0.02 mm is recommended for the plated through hole diameter.

◆Contact Position Arrangement



◆Panel Cutout



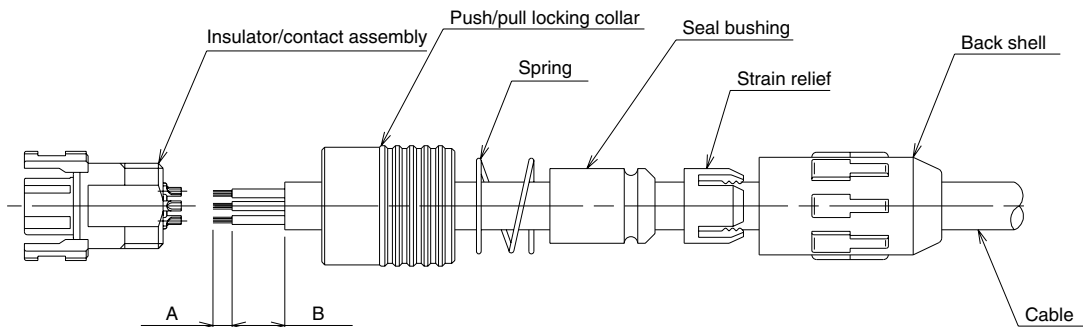
| | A | B | C | D | Panel Thickness |
|-----------|------|------|-------|------|-----------------|
| 3,6 pos | 1.25 | 6.45 | 8.05 | 3.95 | 0.7~2 |
| 10,12 pos | 1.35 | 9.25 | 11.05 | 5.45 | 0.7~3 |

- Notes
- 1.The contact configuration depicts a view from the wiring side.
 2. Mounting to the panel is accomplished by tightening the hexagonal nut from the rear side of the panel.

◆ Assembly Procedures

Plug Assembly Sequence

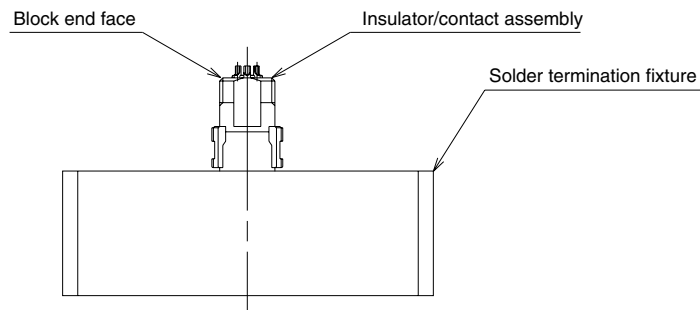
1



| | A | B |
|-----------------------------|------------------------------------|-------------|
| Solder type : 3 and 6 pos. | 2 mm | 5.5 mm max. |
| Solder type : 12 pos. | 2 mm | 10 mm max. |
| Crimp type : 10 and 12 pos. | 2 ⁰ / _{0.5} mm | 15 to 20 mm |

Thread the back shell, strain relief, seal bushing, spring and push/pull locking collar over the cable as shown above.

2

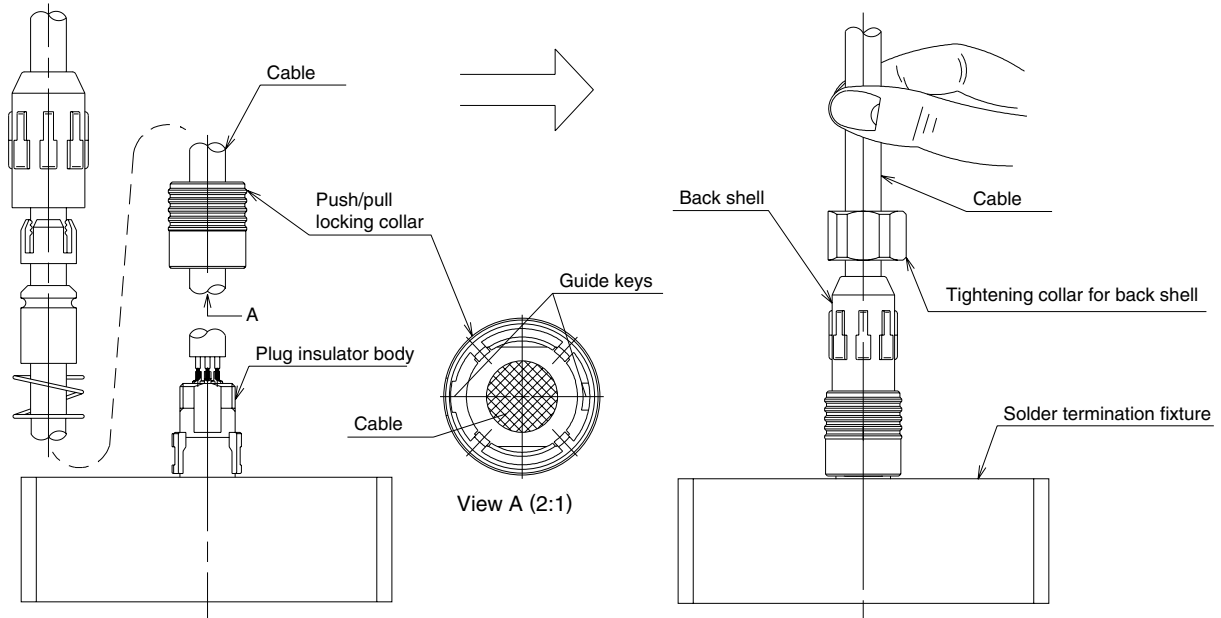


Solder type

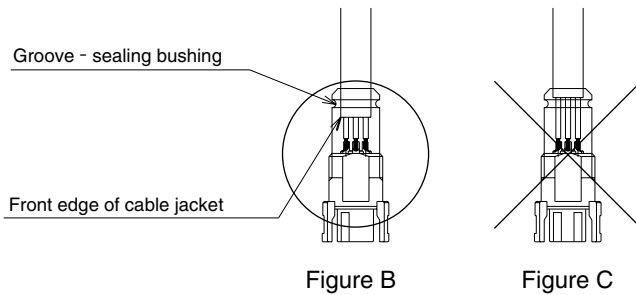
1. Pre-solder the exposed cable conductors (dia. A). The diameter of the pre-soldered conductors should not exceed 0.7 mm for 6 contact plug and 1.0 mm for 3 contact plug.
2. Insert the insulator body over the applicable solder termination fixture.
3. Insert the pre-soldered conductors in the contact soldering pot and solder them in place.
Soldering iron temperature should be $280 \pm 10^{\circ}\text{C}$ applied for 3-4 second.

Crimp type

1. Crimp the applicable contact to the stripped conductor. Use correct crimp tools. Verify the dimensions and crimp configuration.
2. Insert the contact into the appropriate opening in the insulator body.
3. Verify fully seated position by applying a slight pull force on the conductor. The contact should remain in place.
Re-insert if not seated.



3



| Connector | Back shell tightening collar size | Torque |
|----------------|-----------------------------------|--------|
| 3 and 6 Pos. | 16 mm | 0.5N·m |
| 10 and 12 Pos. | 18 mm | 0.5N·m |

1. To prevent accidental loosening of the back shell it is recommended that a small amount of primer (Loctite® 7649) and adhesive (Loctite® 271) be applied to the threads of the insulator body before proceeding.
2. Keeping the terminated insulator body on the fixture, re-assembly the plug in order shown.
4. Using the correct back-tightening collar tighten the back shell to the specified torque.
When tightening the collar make sure that the cable will NOT turn.
5. Remove the assembly from the fixture.

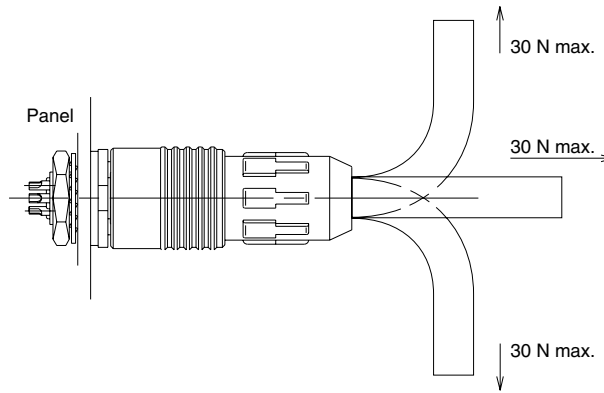
Note: Loctite is a registered trademark of the Henkel Loctite Corporation.

◆ General usage notes

| 1. Mating | 2. Un-mating |
|--|---|
| | |
| <p>When mounting, smooth mating will be achieved by holding plug in any are "A" and aligning the arrow of the plug with that of the receptacle ,then pushing the plug straight in.</p> | <p>When removing the plug from its connected condition, hold the plug by push/pull locking collar (area "B") and pull straight off.</p> |

◆ Precautions

1. Do NOT apply force in excess of 30N in the directions shown below.



2. To maintain the water/dust protection performance and the cable clamp force, use a cable that is within the range of applicable cable diameter.
3. Consult HRS representative when using different cables.



HIROSE ELECTRIC CO.,LTD.

5-23,OSAKI 5-CHOME,SHINAGAWA-KU,TOKYO 141-8587,JAPAN
 PHONE: 81-3-3491-9741, FAX: 81-3-3493-2933
<http://www.hirose.com>
<http://www.hirose-connectors.com>

Looking for pricing, stock, or lifecycle information?

Click below to explore more details on WIN SOURCE:

- ⊖ [View HR30-7R-12PD\(71\) on WIN SOURCE](#)
- ⊖ [Hirose Electric Co Ltd Information](#)

Optimize Your Supply Chain with WIN SOURCE Solutions

- ✓ Global Sourcing Solution
- ✓ Obsolete Management
- ✓ Cost Control Management
- ✓ Shortage Management
- ✓ Alternative Solution
- ✓ Excess Inventory Management