



**THE DATASHEET OF
HN12-5.1-AG**



Linear Series

AC-DC Power Supplies

The Bel Power Solutions produces the industry's broadest selection of Linear power supplies with output voltages from 5 to 48 Volts. Rugged technology and proven design merge to create quiet, highly-regulated, dependable DC power.

The Linear power supplies are approved to domestic and international regulatory standards, and are CE Marked to the Low Voltage Directive (LVD).



Key Features & Benefits

- RoHS compatible for all six substances
- Worldwide AC Input Capabilities:
 - 100/120/220/230/240 VAC
 - $\pm 0.05\%$ Output Regulation
 - Low Output Ripple
 - Mean Time Before Failure (MTBF) 300,000 Hours
 - CE marked to Low Voltage Directive
 - 100% Burn-In
 - 2 Year Warranty
- Overvoltage Protection (OVP) Standard on 5 V Single Outputs, Optional for other outputs under 48 V

Applications

- Used in industrial and medical applications needing low noise/ripple – amplifiers, acoustic, broadcast, ATE and control equipment.



bel POWER
SOLUTIONS &
PROTECTION

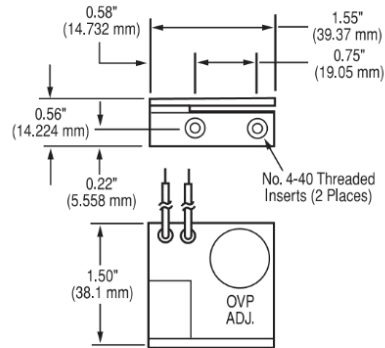
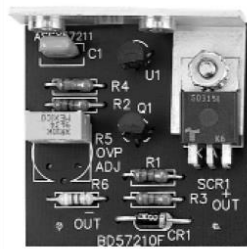
a bel group

belfuse.com/power-solutions

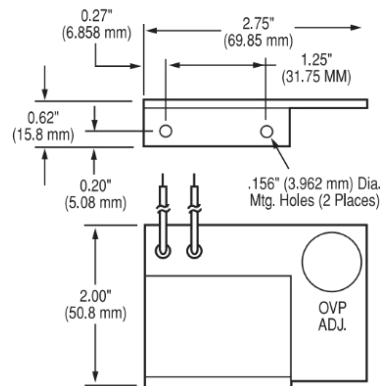
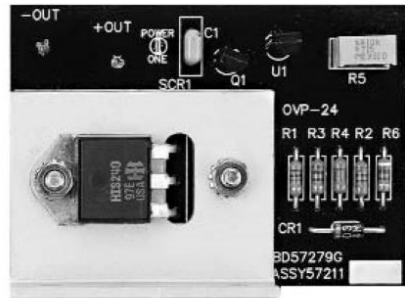
1. OVERVOLTAGE PROTECTION OPTIONS

These optional overvoltage protection modules are offered for use with Linear Power Supplies. Each is user adjustable from 6.4 V to 34 V.

OVP-12G



OVP-24G



2. OVP SELECTION GUIDE

| MODEL | CASE SIZE | OVP MODULES REQUIRED * |
|---------------------|--------------------|--|
| SINGLE OUTPUT | B, C, N, D | OVP-12G |
| | E, F | OVP-24G |
| DUAL OUTPUT | AA, B, BB, CC | OVP-12G protects both outputs |
| | E | OVP-24G protects both outputs |
| TRIPLE OUTPUT | AA, BAA, D | OVP-12G protects both 12 V through 15 V outputs |
| | CBB, 131 | |
| | DBB, DCC | |
| PEAK CURRENT MODELS | N, BAA, CBB 131 | OVP-12G protects any output not provided with built-in OVP |

* Outputs with factory built-in OVP are indicated in the Voltage/Current Rating Chart for each model. OVP is not available for 48 V models.

3. MODEL SELECTION – SINGLE OUTPUT

| Model Input 100 to 264 VAC | Nominal Vout* | Max Amps | Case Type | Additional Features |
|-------------------------------|------------------|-------------|--------------|------------------------|
| 5 Vout | | | | |
| HA5-1.5/OVP-AG | 5 | 1.5 | B | A |
| HB5-3/OVP-AG | 5 | 3 | B | A, C |
| HC5-6/OVP-AG | 5 | 6 | C | A, C |
| HN5-9/OVP-AG | 5 | 9 | N | A, C |
| HD5-12/OVP-AG | 5 | 12 | D | A, C |
| HE5-18/OVP-AG | 5 | 18 | E | A, C |
| F5-25/OVP-AG | 5 | 25 | F | A, C, D, H |
| G5-35/OVP-AG | 5 | 35 | F | A, C, D, H |
| CP197-AG | 5 | 50 | F | A, C, D |
| 12 to 15 Vout | | | | |
| HA15-0.9-AG | 12 | 0.9 | B | |
| HB12-1.7-AG | 12 | 1.7 | B | C |
| HC12-3.4-AG | 12 | 3.4 | C | C |
| HN12-5.1-AG | 12 | 5.1 | N | C |
| HD12-6.8-AG | 12 | 6.8 | D | C |
| HE12-10.2-AG | 12 | 10.2 | E | C |
| F15-15-AG | 12 | 16 | F | C, D, H |
| HA15-0.9-AG | 15* | 0.9 | B | |
| HB15-1.5-AG | 15 | 1.5 | B | C |
| HC15-3-AG | 15 | 3 | C | C |
| HN15-4.5-AG | 15 | 4.5 | N | C |
| HD15-6-AG | 15 | 6 | D | C |
| HE15-9-AG | 15 | 9 | E | C |
| F15-15-AG | 15* | 15 | F | C, D, H |

| Case Type | Dimensions | |
|-----------|---------------------|--------------------------|
| | inches | millimeters |
| AA | 6.50 x 4.00 x 2.10 | 165.10 x 101.60 x 53.34 |
| B | 4.87 x 4.00 x 2.10 | 123.70 x 101.60 x 53.34 |
| BAA | 10.25 x 4.00 x 2.95 | 260.35 x 101.60 x 74.93 |
| BB | 7.00 x 4.87 x 2.95 | 177.80 x 123.70 x 74.93 |
| C | 5.62 x 4.87 x 2.95 | 142.75 x 123.70 x 74.93 |
| CBB | 11.00 x 4.87 x 3.28 | 279.40 x 123.70 x 83.31 |
| CC | 9.38 x 4.87 x 3.28 | 238.25 x 123.70 x 83.31 |
| CP131 | 11.00 x 4.87 x 3.28 | 279.40 x 123.70 x 83.31 |
| D | 9.00 x 4.87 x 3.28 | 228.60 x 123.70 x 83.31 |
| DBB | 14.25 x 4.87 x 3.38 | 361.95 x 123.70 x 85.85 |
| DCC | 15.00 x 4.88 x 4.55 | 381.00 x 123.95 x 115.57 |
| E | 14.00 x 4.87 x 3.53 | 355.60 x 123.70 x 89.66 |
| F | 16.75 x 4.88 x 5.00 | 425.50 x 123.95 x 127.00 |
| N | 7.00 x 4.87 x 3.28 | 177.80 x 123.70 x 83.31 |

| Model Input 100 to 264 VAC | Nominal Vout* | Max Amps | Case Type | Additional Features |
|-------------------------------|------------------|-------------|--------------|------------------------|
| 24 to 28 Vout | | | | |
| HA24-0.5-AG | 24 | 0.5 | B | |
| HB24-1.2-AG | 24 | 1.2 | B | C |
| HC24-2.4-AG | 24 | 2.4 | C | C |
| HN24-3.6-AG | 24 | 3.6 | N | C |
| HD24-4.8-AG | 24 | 4.8 | D | C |
| HE24-7.2-AG | 24 | 7.2 | E | C |
| F24-12-AG | 24 | 12 | F | C, D, H |
| HA24-0.5-AG | 28* | 0.5 | B | |
| HB28-1-AG | 28 | 1 | B | C |
| HC28-2-AG | 28 | 2 | C | |
| HN28-3-AG | 28 | 3 | N | C |
| HD28-4-AG | 28 | 4 | D | C |
| HE28-6-AG | 28 | 6 | E | C |
| F24-12-AG | 28* | 10 | F | C, D, H |
| 48 Vout | | | | |
| HB48-0.5-AG | 48 | 0.5 | B | |
| HC48-1-AG | 48 | 1 | C | |
| HD48-3-AG | 48 | 3 | D | C |
| HE48-4-AG | 48 | 4 | E | C |

* May require jumpering or potentiometer adjustment.

Model numbers highlighted in yellow are not recommended for new designs or reached End-Of-Life (EOL) status.

Additional Features:

- A Overvoltage protection, set at 6.2 V ±0.4 V.
- B Non-adjustable 3-terminal regulator.
- C Remote sense provided.
- D With output inhibit & parallel operation master/slave capability.
- E With output inhibit.
- F Adjustable 3-terminal regulator.
- G Can be made into an isolated output by removing jumper W1.
- H Model requires 100 LFM forced-air cooling above 75% of rated output power at 50°C.



Asia-Pacific
+86 755 298 85888

Europe, Middle East
+353 61 49 8941

North America
+1 866 513 2839

4. MODEL SELECTION – DUAL OUTPUT

| Model Input 100 to 264 VAC | Nominal Vout* | Max Amps | Case Type | Additional Features |
|-------------------------------|------------------|-------------|--------------|------------------------|
| 5 to 15 Vout | | | | |
| HAA5-1.5/OVP-AG | +5, -5 | 1.5, 1.5 | AA | A |
| HBB5-3/OVP-AG | +5, -5 | 3, 3 | BB | A |
| HCC5-6/OVP-AG | +5, -5 | 6, 6 | CC | A, C |
| HAA512-AG | 5, 12 to 15 | 2, 0.5 | AA | A |
| HBB512-AG | 5, 12 to 15 | 3, 1.25 | BB | A, C |
| HCC512-AG | 5, 12 to 15 | 6, 2.5 | CC | A, C |
| HAA15-0.8-AG | +12, -5* | 1, 0.4 | AA | C |
| HBB15-1.5-AG | +12, -5* | 1.7, 0.7 | BB | C |
| HAD12-0.4-AG | +12, -12 | 0.4, 0.4 | B | B |
| HAA15-0.8-AG | +12, -12 | 1, 1 | AA | C |
| HBB15-1.5-AG | +12, -12 | 1.7, 1.7 | BB | C |
| HCC15-3-AG | +12, -12 | 3.4, 3.4 | CC | C |
| HDD15-5-AG | +12, -12* | 5, 5 | E | C |
| HAA15-0.8-AG | +12, -15* | 1, 0.8 | AA | C |
| HBB15-1.5-AG | +12, -15* | 1.7, 1.5 | BB | C |
| HCC15-3-AG | +12, -15* | 3.4, 3 | CC | C |
| HDD15-5-AG | +12, -15* | 5, 5 | E | C |
| HAA15-0.8-AG | +15, -5* | 0.8, 0.4 | AA | C |
| HBB15-1.5-AG | +15, -5* | 1.5, 0.7 | BB | C |
| HAA15-0.8-AG | +15, -12* | 0.8, 1 | AA | C |
| HBB15-1.5-AG | +15, -12* | 1.5, 1.7 | BB | C |
| HCC15-3-AG | +15, -12* | 3, 3.4 | CC | C |
| HDD15-5-AG | 15, -12* | 5, 5 | E | C |
| 15 to 24 Vout | | | | |
| HAD15-0.4-AG | +15, -15 | 0.4, 0.4 | B | B |
| HAA15-0.8-AG | +15, -15 | 0.8, 0.8 | AA | C |
| HBB15-1.5-AG | +15, -15* | 1.5, 1.5 | BB | C |
| HCC15-3-AG | +15, -15* | 3, 3 | CC | C |
| HDD15-5-AG | +15, -15 | 5, 5 | E | C |
| HAA24-0.6-AG | +24, -24 | 0.6, 0.6 | AA | |
| HBB24-1.2-AG | +24, -24 | 1.2, 1.2 | BB | |
| HCC24-2.4-AG | +24, -24 | 2.4, 2.4 | CC | C |

* May require jumpering or potentiometer adjustment.

Model numbers highlighted in yellow are not recommended for new designs or reached End-Of-Life (EOL) status.

| Case Type | Dimensions | |
|--------------|---------------------|--------------------------|
| | inches | millimeters |
| AA | 6.50 x 4.00 x 2.10 | 165.10 x 101.60 x 53.34 |
| B | 4.87 x 4.00 x 2.10 | 123.70 x 101.60 x 53.34 |
| BAA | 10.25 x 4.00 x 2.95 | 260.35 x 101.60 x 74.93 |
| BB | 7.00 x 4.87 x 2.95 | 177.80 x 123.70 x 74.93 |
| C | 5.62 x 4.87 x 2.95 | 142.75 x 123.70 x 74.93 |
| CBB | 11.00 x 4.87 x 3.28 | 279.40 x 123.70 x 83.31 |
| CC | 9.38 x 4.87 x 3.28 | 238.25 x 123.70 x 83.31 |
| CP131 | 11.00 x 4.87 x 3.28 | 279.40 x 123.70 x 83.31 |
| D | 9.00 x 4.87 x 3.28 | 228.60 x 123.70 x 83.31 |
| DBB | 14.25 x 4.87 x 3.38 | 361.95 x 123.70 x 85.85 |
| DCC | 15.00 x 4.88 x 4.55 | 381.00 x 123.95 x 115.57 |
| E | 14.00 x 4.87 x 3.53 | 355.60 x 123.70 x 89.66 |
| F | 16.75 x 4.88 x 5.00 | 425.50 x 123.95 x 127.00 |
| N | 7.00 x 4.87 x 3.28 | 177.80 x 123.70 x 83.31 |

Additional Features:

- A Overvoltage protection, set at 6.2 V ±0.4 V.
- B Non-adjustable 3-terminal regulator.
- C Remote sense provided.
- D With output inhibit and parallel operation master/slave capability.
- E With output inhibit.
- F Adjustable 3-terminal regulator.
- G Can be made into an isolated output by removing jumper W1.
- H Model requires 100 LFM forced-air cooling above 75% of rated output power at 50°C.

5. MODEL SELECTION – TRIPLE OUTPUT

Unsigned output voltages are isolated and can be used as either + or - polarities.

| Model Input 100 to 264 VAC | Nominal Vout* | Max Amps | Case Type | Additional Features |
|-------------------------------|------------------|--------------|-----------|------------------------|
| 5 to 24 Vout | | | | |
| HTAA-16W-AG | +5, +12, -5* | 2, 0.4, 0.4 | AA | A |
| HBAA-40W-AG | 5, +12, -5* | 3, 1, 0.4 | BAA | A, C |
| HCAA-60W-AG | +5, +12, -5* | 6, 1, 0.4 | D | A, C |
| HCBB-75W-AG | 5, +12, -5* | 6, 1.7, 0.7 | CBB | C |
| CP131-AG | 5, +12, -5* | 8, 1.7, 0.7 | CP131 | A, C |
| HDBB-105W-AG | 5, +12, -5* | 12, 1.7, 0.7 | DBB | A, C |
| HTAA-16W-AG | 5, +12, -12 | 2, 0.4, 0.4 | AA | A |
| HBAA-40W-AG | 5, +12, -12 | 3, 1, 1 | BAA | A, C |
| HCAA-60W-AG | +5, +12, -12 | 6, 1, 1 | D | A, C |
| HCBB-75W-AG | 5, +12, -12 | 6, 1.7, 1.7 | CBB | C |
| CP131-AG | 5, +12, -12 | 8, 1.7, 1.7 | CP131 | A, C |
| HDBB-105W-AG | 5, +12, -12 | 12, 1.7, 1.7 | DBB | C |
| HDCC-150W-AG | 5, +12, -12 | 12, 3.4, 3.4 | DCC | A, C |
| HTAA-16W-AG | 5, +12, -15* | 2, 0.4, 0.4 | AA | A |
| HBAA-40W-AG | 5, +12, -15* | 3, 1, 0.8 | BAA | A, C |
| HCAA-60W-AG | +5, +12, -15* | 6, 1, 1 | D | A, C |
| HCBB-75W-AG | 5, +12, -15* | 6, 1.7, 1.5 | CBB | C |
| CP131-AG | 5, +12, -15 | 8, 1.7, 1.5 | CP131 | A, C |
| HDBB-105W-AG | 5, +12, -15* | 12, 1.7, 1.5 | DBB | C |
| HDCC-150W-AG | 5, +12, -15 | 12, 3.4, 3 | DCC | A, C |
| HTAA-16W-AG | 5, +15, -5* | 2, 0.4, 0.4 | AA | A |
| HBAA-40W-AG | 5, +15, -5* | 3, 0.8, 0.4 | BAA | A, C |
| HCAA-60W-AG | +5, +15, -5* | 6, 1, 0.4 | D | A, C |
| HCBB-75W-AG | 5, +15, -5* | 6, 1.5, 0.7 | CBB | C |
| CP131-AG | 5, +15, -5* | 8, 1.5, 0.7 | CP131 | A, |
| HDBB-105W-AG | 5, +15, -5* | 12, 1.5, 0.7 | DBB | C |
| HTAA-16W-AG | 5, +15, -12* | 2, 0.4, 0.4 | AA | A |
| HBAA-40W-AG | 5, +15, -12* | 3, 0.8, 1 | BAA | A, C |
| HCAA-60W-AG | +5, +15, -12* | 6, 1, 1 | D | A, C |
| HCBB-75W-AG | 5, +15, -12* | 6, 1.5, 1.7 | CBB | C |
| CP131-AG | 5, +15, -12 | 8, 1.5, 1.7 | CP131 | A, C |
| HDBB-105W-AG | 5, +15, -12* | 12, 1.5, 1.7 | DBB | C |
| HDCC-150W-AG | 5, +15, -12 | 12, 3, 3.4 | DCC | A, C |
| HTAA-16W-AG | 5, +15, -15* | 2, 0.4, 0.4 | AA | A |
| HBAA-40W-AG | 5, +15, -15* | 3, 0.8, 0.8 | BAA | A, C |
| HCAA-60W-AG | +5, +15, -15* | 6, 1, 1 | D | A, C |
| HCBB-75W-AG | 5, +15, -15* | 6, 1.5, 1.5 | CBB | C |
| CP131-AG | 5, +15, -15 | 8, 1.5, 1.5 | CP131 | A, C |
| HDBB-105W-AG | 5, +15, -15* | 12, 1.5, 1.5 | DBB | C |
| HDCC-150W-AG | 5, +15, -15 | 12, 3, 3 | DCC | A, C |

| Case Type | Dimensions | |
|-----------|---------------------|--------------------------|
| | inches | millimeters |
| AA | 6.50 x 4.00 x 2.10 | 165.10 x 101.60 x 53.34 |
| B | 4.87 x 4.00 x 2.10 | 123.70 x 101.60 x 53.34 |
| BAA | 10.25 x 4.00 x 2.95 | 260.35 x 101.60 x 74.93 |
| BB | 7.00 x 4.87 x 2.95 | 177.80 x 123.70 x 74.93 |
| C | 5.62 x 4.87 x 2.95 | 142.75 x 123.70 x 74.93 |
| CBB | 11.00 x 4.87 x 3.28 | 279.40 x 123.70 x 83.31 |
| CC | 9.38 x 4.87 x 3.28 | 238.25 x 123.70 x 83.31 |
| CP131 | 11.00 x 4.87 x 3.28 | 279.40 x 123.70 x 83.31 |
| D | 9.00 x 4.87 x 3.28 | 228.60 x 123.70 x 83.31 |
| DBB | 14.25 x 4.87 x 3.38 | 361.95 x 123.70 x 85.85 |
| DCC | 15.00 x 4.88 x 4.55 | 381.00 x 123.95 x 115.57 |
| E | 14.00 x 4.87 x 3.53 | 355.60 x 123.70 x 89.66 |
| F | 16.75 x 4.88 x 5.00 | 425.50 x 123.95 x 127.00 |
| N | 7.00 x 4.87 x 3.28 | 177.80 x 123.70 x 83.31 |

Additional Features:

- A Overvoltage protection, set at 6.2 V ±0.4 V.
- B Non-adjustable 3-terminal regulator.
- C Remote sense provided.
- D With output inhibit and parallel operation master/slave capability.
- E With output inhibit.
- F Adjustable 3-terminal regulator.
- G Can be made into an isolated output by removing jumper W1.
- H Model requires 100 LFM forced-air cooling above 75% of rated output power at 50°C.

* May require jumpering or potentiometer adjustment.

Model numbers highlighted in yellow are not recommended for new designs or reached End-Of-Life (EOL) status.



Asia-Pacific
+86 755 298 85888

Europe, Middle East
+353 61 49 8941

North America
+1 866 513 2839

6. INPUT SPECIFICATIONS

| PARAMETER | CONDITIONS / DESCRIPTION | MIN | NOM | MAX | UNITS | |
|---------------------------------|--|-------------|-----|-------|-------|-----|
| AC Input Voltage ^{1,2} | Jumper selectable, shipped factory configured for 120 VAC operation. All models must be externally fused for proper operation. | 100 VAC Tap | 87 | 100 | 110 | VAC |
| | Fuse ratings are marked on each unit. Consult factory for each unit's fuse requirements. | 120 VAC Tap | 104 | 120 | 132 | |
| | | 220 VAC Tap | 191 | 220 | 242 | |
| | | 240 VAC Tap | 209 | 240 | 264 | |
| Input Frequency | AC input. | 47 | | 63 | Hz | |
| Line Regulation | Output voltage change for a 10% line change: F case models. | -0.01 | | +0.01 | % | |
| | HAD12, HAD15. | -1.0 | | +1.0 | | |
| | Outputs with adjustable three terminal regulators. | -0.5 | | +0.5 | | |
| | All other models. | -0.05 | | +0.05 | | |

7. OUTPUT SPECIFICATIONS

| PARAMETER | CONDITIONS / DESCRIPTION | MIN | NOM | MAX | UNITS |
|-------------------------------|--|-------|-----|---|---------------------|
| Output Adjustment | Minimum output adjustment range ³ | -5 | | +5 | % |
| Efficiency | 5 volt outputs. | | 45 | | % |
| | 12 volt and 15 volt outputs. | | 55 | | |
| | 24 volt and higher outputs. | | 60 | | |
| Ripple and Noise ⁴ | F case models. | | | 3.0 | mV _{PK-PK} |
| | 5 volt, 12 volt, and 15 volt models. | | | 5.0 | mV _{PK-PK} |
| | All three terminal regulator outputs. | | | 0.2 | % _{PK-PK} |
| | 24 volt through 48 volt models. | | | 3.0 mV _{PK-PK} plus 0.02% of output voltage, max | |
| Load Regulation | Output change for a 50% load change: F case models. | -0.02 | | +0.02 | % |
| | HAD12, HAD15. | -1 | | +1 | |
| | Outputs with adjustable three terminal regulators. | -0.5 | | +0.5 | |
| | All other models. | -0.05 | | +0.05 | |
| Transient Response | Recovery time, to within 1% of initial set point due to a 50% load change. | | | 50 | μs |

¹ Derate output current 10% for 50Hz operation.

² Input voltage tolerance for 230 VAC operation is +15%, -10%.

³ Output voltage adjustments can be made to within ±5% of factory setting of nominal output voltage. Locate the "Vadj" potentiometer on the power supply PCB and use a screwdriver to adjust the output pot. The HAD12 and HAD15 3 terminal regulator outputs are not adjustable.

⁴ Full load, 20 MHz bandwidth.

8. SAFETY, REGULATORY AND EMI SPECIFICATIONS

| PARAMETER | CONDITIONS / DESCRIPTION | MIN | NOM | MAX | UNITS |
|------------------------------|--|------|-----|-----|---|
| Agency Approvals | Approved to the latest edition of the following standards; UL/CSA 60950-1 and IEC/EN 62368-1 | | | | |
| Dielectric Withstand Voltage | Input to case | 2121 | | | VDC |
| | Input to output (tested by manufacturer only) | 4242 | | | |
| Electromagnetic | FCC CFR title 47 Part 15 Sub-Part B - conducted. | | | | |
| Interference | EN 55022 / CISPR 22 conducted. EN 55022 / CISPR 22 radiated. | | | | Compatible with system compliance to Level B. |
| Leakage Current | Per EN 62368-1 (264 VAC) | | 23 | 50 | μA |

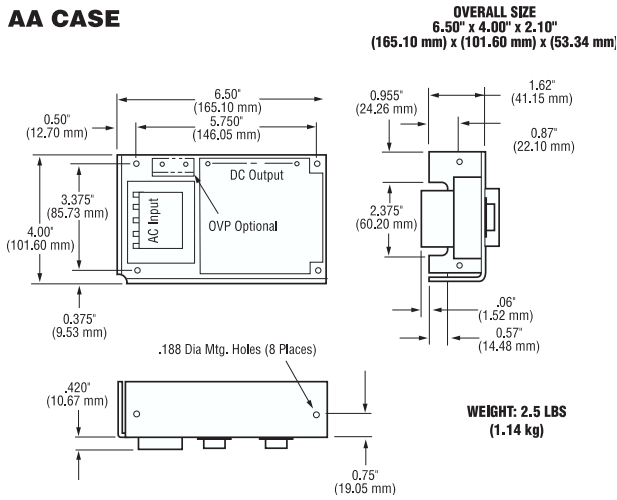
9. SIGNALS AND INTERNAL PROTECTION

| PARAMETER | CONDITIONS / DESCRIPTION | MIN | NOM | MAX | UNITS |
|--------------------------------------|--|-----|-----|-----|-------|
| Overvoltage Protection | Provided on 5 V output units where indicated. Other outputs may use optional overvoltage protectors OVP-12 and OVP-24. | 5.8 | | 6.6 | V |
| Remote Sense | Total voltage compensation for cable losses with respect to the main output. Provided on models where indicated. | | | 250 | mV |
| Overcurrent/Short Circuit Protection | Automatic current limit/foldback. Rated as a percentage of output power. | 115 | 120 | 140 | % |
| Master/Slave Operation | For parallel operation of up to 6 units. Master/slave pin provided on F case models only. Contact factory for application notes. | | | | |

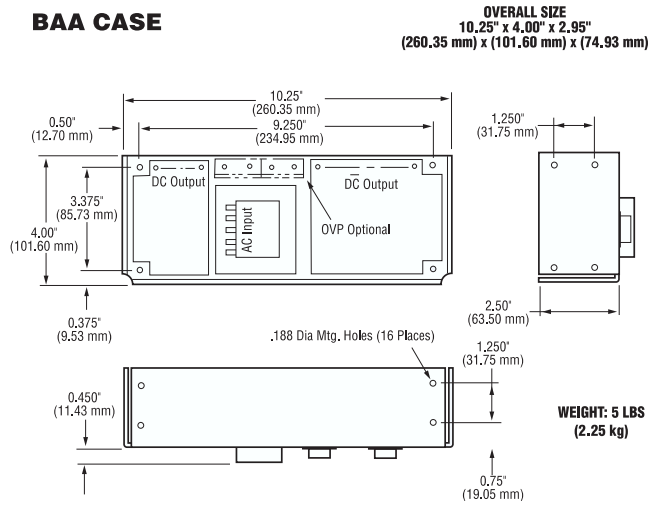
10. ENVIRONMENTAL SPECIFICATIONS

| PARAMETER | CONDITIONS/DESCRIPTION | MIN | NOM | MAX | UNITS |
|-------------------------|---|------|-----|------|------------------|
| Operating Temperature | Derate output power linearly above 50°C by 3% per °C. | | | 50 | °C |
| | @ 100% load | 0 | | | |
| | @ 40% load | | | 70 | °C |
| Storage Temperature | | -40 | | 85 | °C |
| Temperature Coefficient | 0°C to 50°C (after 15-minute warm-up). | | 0.1 | 0.3 | %/°C |
| | 24 hours after warm-up. | -0.3 | | +0.3 | % |
| Shock | Operating. | | | 20 | G _{PK} |
| Vibration | Random vibration from 10 Hz to 2 kHz, 3 axis. | | | 6.15 | G _{RMS} |
| Relative Humidity | Non-Condensing. | 5 | | 95 | %RH |

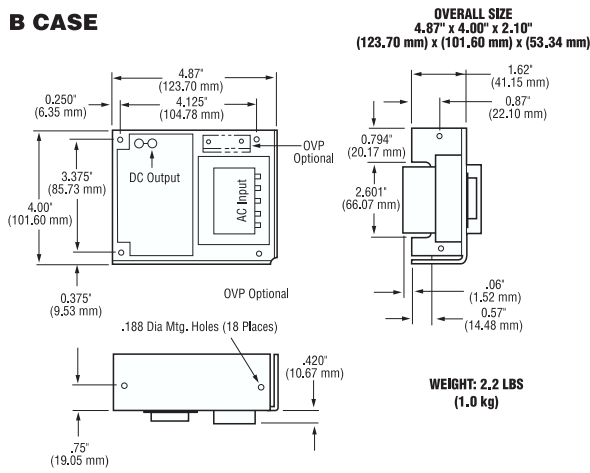
AA CASE



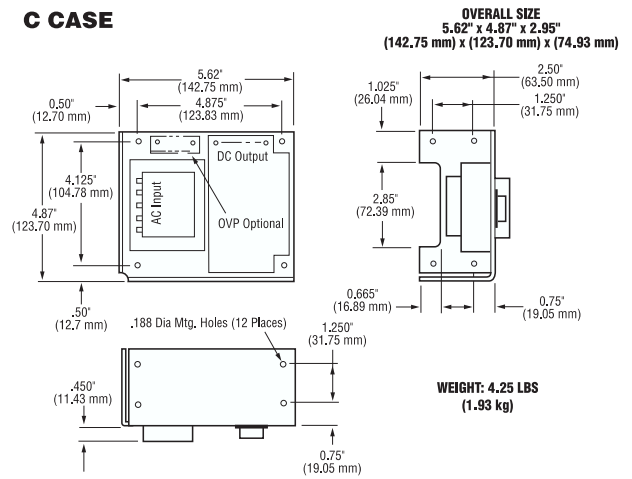
BAA CASE



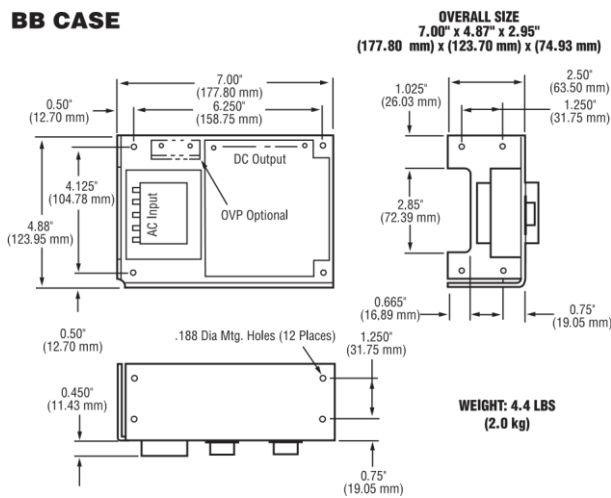
B CASE



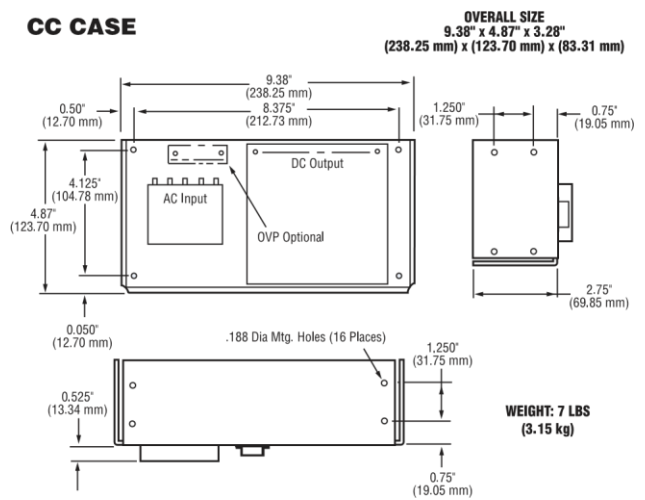
C CASE



BB CASE

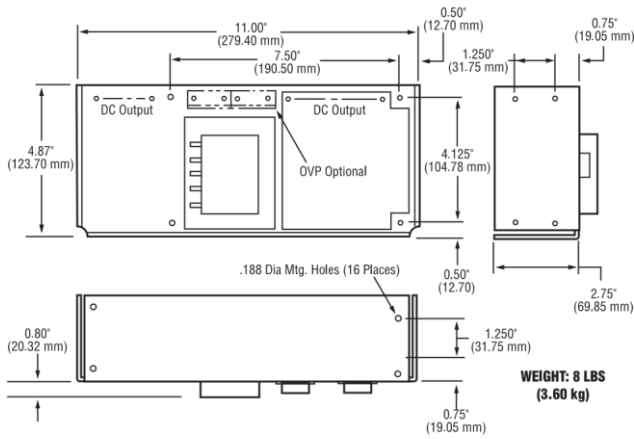


CC CASE



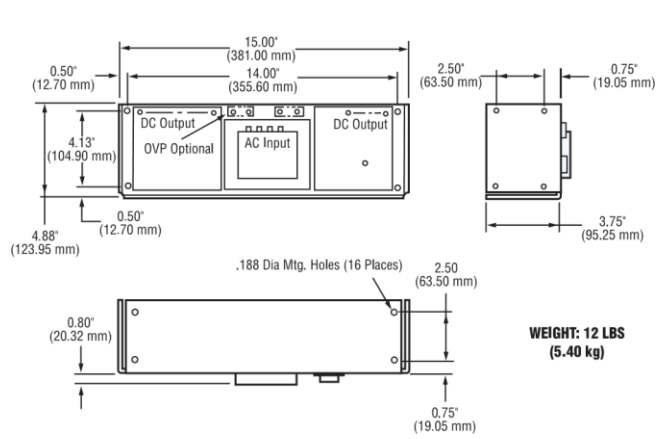
CBB CASE

OVERALL SIZE
11.00" x 4.87" x 3.28"
(279.40 mm) x (123.70 mm) x (83.31 mm)



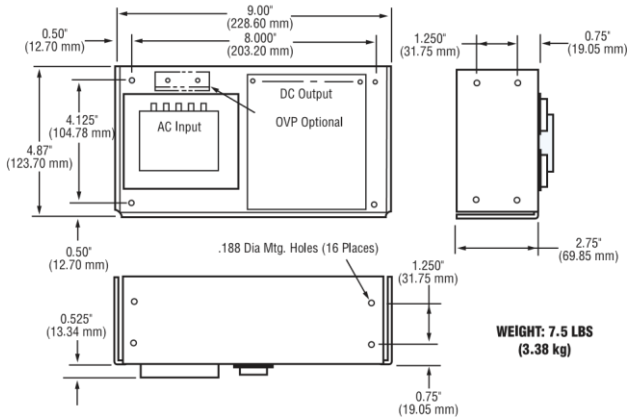
DCC CASE

OVERALL SIZE
15.00" x 4.88" x 4.55"
(381.00 mm) x (123.95 mm) x (115.57 mm)



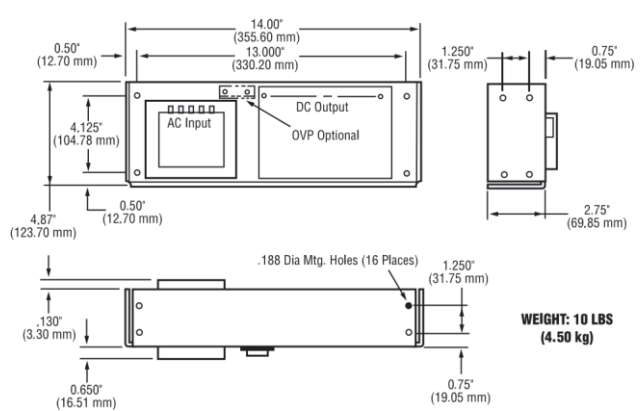
D CASE

OVERALL SIZE
9.00" x 4.87" x 3.28"
(228.60 mm) x (123.70 mm) x (83.31 mm)



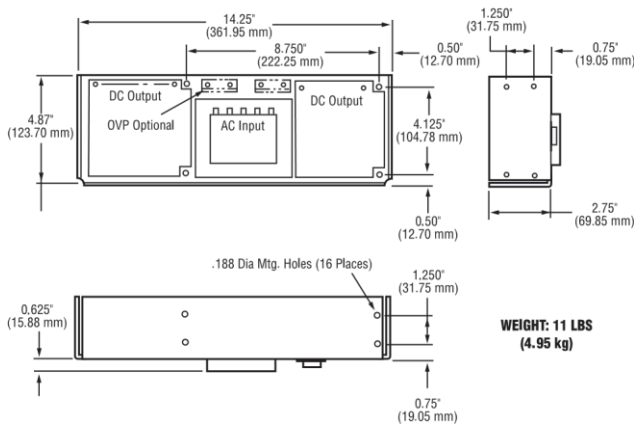
E CASE

OVERALL SIZE
14.00" x 4.87" x 3.53"
(355.60 mm) x (123.70 mm) x (89.66 mm)



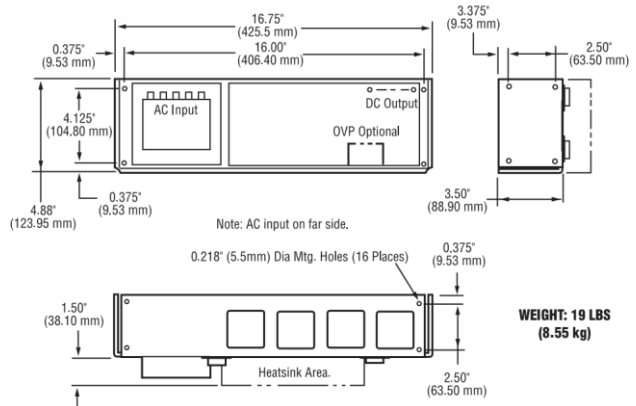
DBB CASE

OVERALL SIZE
14.25" x 4.87" x 3.38"
(361.95 mm) x (123.70 mm) x (85.85 mm)



F CASE

OVERALL SIZE
16.75" x 4.88" x 5.00"
(425.5 mm) x (123.95 mm) x (127.00 mm)



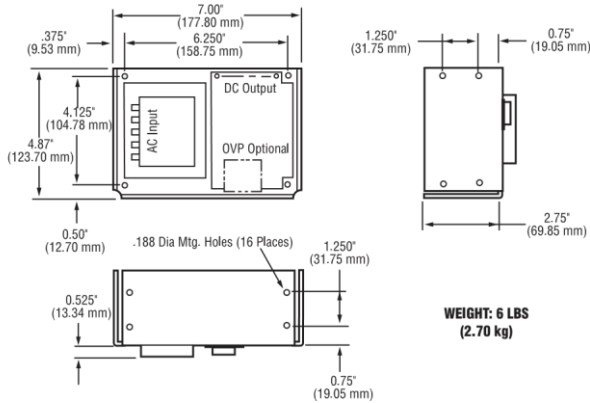
Asia-Pacific
 +86 755 298 85888

Europe, Middle East
 +353 61 49 8941

North America
 +1 866 513 2839

N CASE

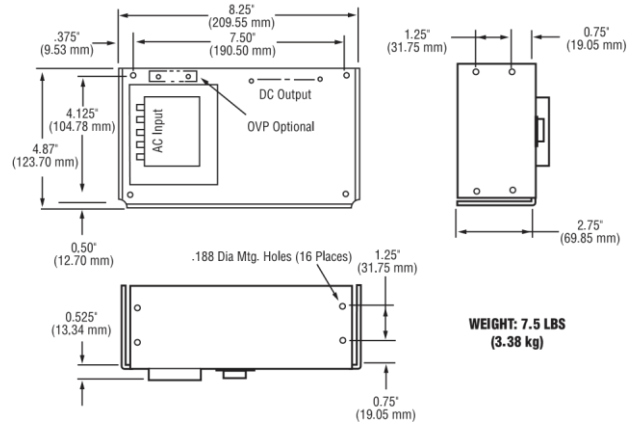
OVERALL SIZE
7.00" x 4.87" x 3.28"
(177.80 mm) x (123.70 mm) x (83.31 mm)



WEIGHT: 6 LBS
(2.70 kg)

CP510-A CASE

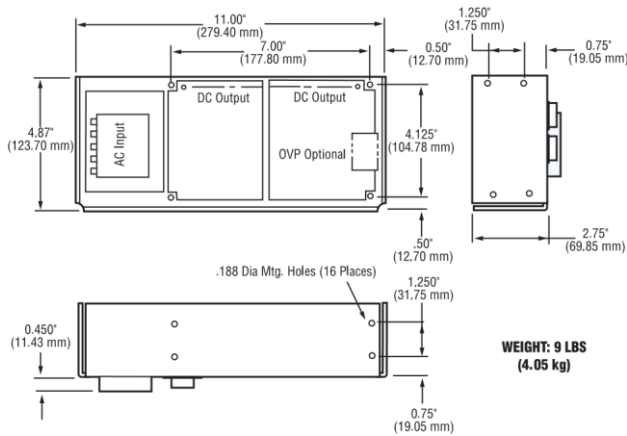
OVERALL SIZE
8.25" x 4.87" x 3.28"
(209.55 mm) x (123.70 mm) x (83.31 mm)



WEIGHT: 7.5 LBS
(3.38 kg)

CP131 CASE

OVERALL SIZE
11.00" x 4.87" x 3.28"
(279.40 mm) x (123.70 mm) x (83.31 mm)



WEIGHT: 9 LBS
(4.05 kg)

Mechanical Dimensions of Case Types



For more information on these products consult: tech.support@psbel.com

NUCLEAR AND MEDICAL APPLICATIONS - Products are not designed or intended for use as critical components in life support systems, equipment used in hazardous environments, or nuclear control systems.

TECHNICAL REVISIONS - The appearance of products, including safety agency certifications pictured on labels, may change depending on the date manufactured. Specifications are subject to change without notice.

Looking for pricing, stock, or lifecycle information?

Click below to explore more details on WIN SOURCE:

-  [View HN12-5.1-AG on WIN SOURCE](#)
-  [Bel Power Solutions Information](#)

Optimize Your Supply Chain with WIN SOURCE Solutions

-  Global Sourcing Solution
-  Obsolete Management
-  Cost Control Management
-  Shortage Management
-  Alternative Solution
-  Excess Inventory Management