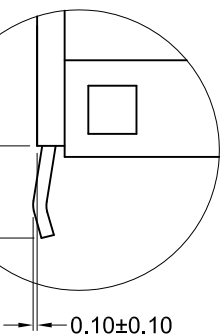
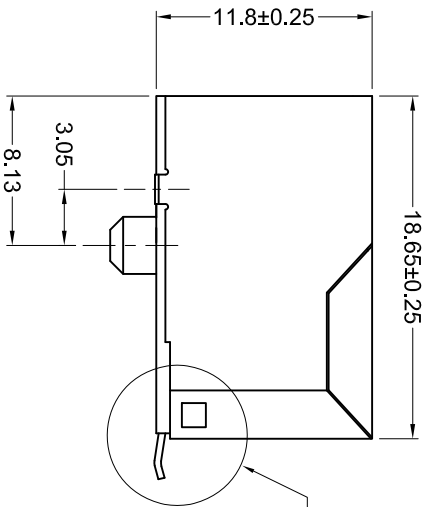
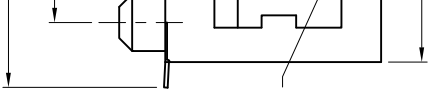




**THE DATASHEET OF
GMX-SMT2-S2-8850TR**





Materials and Finish

Housing Material:

high temp. thermoplastic,
(reflow process compatible)
UL 94V-0 rated, black color

Design meets UL 1863 Sec. 8

Electrical Probe and Sec. 20

Child Finger test requirements

Contact Material: phosphor bronze

Contact Plating Options:

Standard: 0.0001" Nickel

Plating; Selective Plating

Gold Flash on Contact

Area, Tin on Termination End

50: 0.0001" Nickel Plating,

Selective Plating 0.000050"

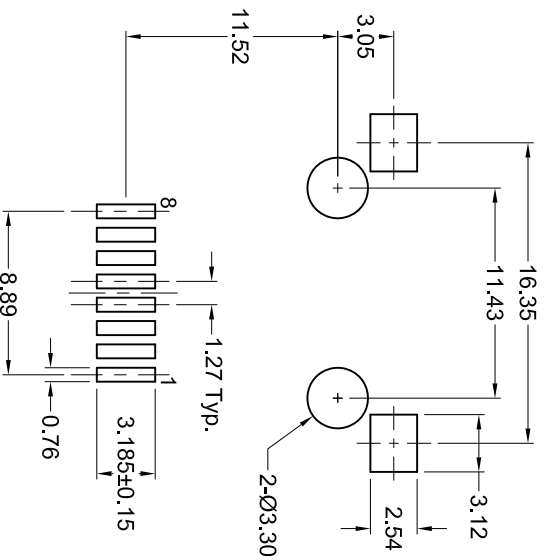
Gold on Contact Area to

Comply with FCC Requirements

Under No. 47 C.F.R. Part 68,

Subpart F, Tin on Termination End

Recommended PCB Layout (Top View)



Electrical Performance

Category 5 100MHz Bandwidth Performance

Performance meets near end crosstalk (NEXT)

Requirements of -40dB @ 100MHz per

EIA/TIA 568A in applications where UL

Approved Category 5 cable (GAZ7-3773-1)s used

Shielded types offer 20dB shielding from
30MHz to 300MHz

g	Packaging
1	Bulk
	Bulk
	Tape & Reel
	Tape & Reel

EV. BY	CHK. BY	DRAWN BY
S. Wien	H. MA	R. Aguirre
S. Wien	H. MA	
S. Wien	P. DalCanto	
D. Gih	P. DalCanto	
W. Cook	H. MA	
H. MA	C. Furumatsu	

	DATE
	05/23/05
	UNITS
	mm

GMX-SMT2-S2-88

Right Angle Modular Jack, Shielded, RoHS Compliant

8 position, 8 contacts, Surface Mount



E134345

LR78160

Tolerances

XX ± 0.25

XXX ± 0.15

Unless Stated

Otherwise



Looking for pricing, stock, or lifecycle information?

Click below to explore more details on WIN SOURCE:

 [View GMX-SMT2-S2-8850TR on WIN SOURCE](#)

 [Kycon, Inc. Information](#)

Optimize Your Supply Chain with WIN SOURCE Solutions

-  Global Sourcing Solution
-  Obsolete Management
-  Cost Control Management
-  Shortage Management
-  Alternative Solution
-  Excess Inventory Management