



**THE DATASHEET OF
DSC2044FE1-H0003**





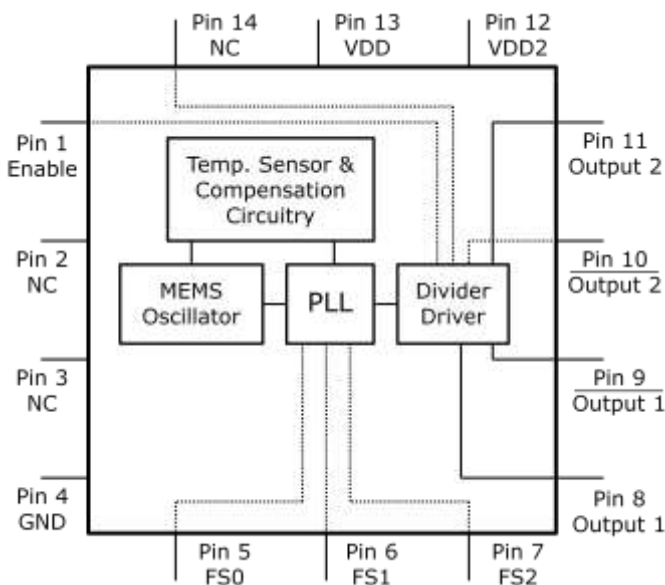
Low-Jitter Configurable Dual HCSL Oscillator

General Description

The DSC2044 series of high performance dual output oscillators utilize a proven silicon MEMS technology to provide excellent jitter and stability while incorporating additional device functionality. The two outputs are controlled by separate supply voltages to allow for high output isolation. The frequencies of the outputs can be identical or independently derived from a common PLL frequency source. The DSC2044 has provision for up to eight user-defined pre-programmed, pin-selectable output frequency combinations.

DSC2044 is packaged in a 14-pin 3.2x2.5 mm QFN package and available in temperature grades from Ext. Commercial to Industrial.

Block Diagram



Features

- **Low RMS Phase Jitter: <1 ps (typ)**
- **High Stability: ± 10 , ± 25 , ± 50 ppm**
- **Wide Temperature Range**
 - Industrial: -40° to 85° C
 - Ext. commercial: -20° to 70° C
- **High Supply Noise Rejection: -50 dBc**
- **Two Independent HCSL Outputs**
- **Pin-Selectable Configurations**
 - 3-bit Output Frequency Combinations
- **Short Lead Times: 2 Weeks**
- **Wide Freq. Range:**
 - HCSL Output: 2.3 – 460 MHz
- **Miniature Footprint of 3.2x2.5mm**
- **Excellent Shock & Vibration Immunity**
 - Qualified to MIL-STD-883
- **High Reliability**
 - 20x better MTF than quartz oscillators
- **Supply Range of 2.25 to 3.6 V**
- **Lead Free & RoHS Compliant**

Applications

- **Storage Area Networks**
 - SATA, SAS, Fibre Channel
- **Passive Optical Networks**
 - EPON, 10G-EPON, GPON, 10G-PON
- **Ethernet**
 - 1G, 10GBASE-T/KR/LR/SR, and FCoE
- **HD/SD/SDI Video & Surveillance**
- **PCI Express**

Pin Description

| Pin No. | Pin Name | Pin Type | Description |
|---------|-----------|----------|---|
| 1 | Enable | I | Enables outputs when high and disables when low |
| 2 | NC | NA | Leave unconnected or grounded |
| 3 | NC | NA | Leave unconnected or grounded |
| 4 | GND | Power | Ground |
| 5 | FS0 | I | Least significant bit for frequency selection |
| 6 | FS1 | I | Middle bit for frequency selection |
| 7 | FS2 | I | Most significant bit for frequency selection |
| 8 | Output1+ | O | Positive HCSL Output 1 |
| 9 | Output1- | O | Negative HCSL Output 1 |
| 10 | Output 2- | O | Negative HCSL Output 2 |
| 11 | Output 2+ | O | Positive HCSL Output 2 |
| 12 | VDD2 | Power | Power Supply for HCSL Output 2 |
| 13 | VDD | Power | Power Supply |
| 14 | NC | NA | Leave unconnected or grounded |

Operational Description

The DSC2044 is a dual output HCSL oscillator consisting of a MEMS resonator and a support PLL IC. The two outputs are generated through independent 8-bit programmable dividers from the output of the internal PLL. Two constraints are imposed on the output frequencies: 1) $f_2 = M \times f_1 / N$, where M and N are even integers between 4 and 254, 2) $1.2\text{GHz} < N \times f_2 < 1.7\text{GHz}$.

The actual frequencies output by the DSC2044 are controlled by an internal pre-programmed memory (OTP). This memory stores all

coefficients required by the PLL for up to eight different frequency combinations. Three control pins (FS0 – FS2) select the output frequency combination. Discera supports customer defined versions of the DSC2044. Standard frequency options are described in in the following sections.

When Enable (pin 1) is floated or connected to VDD, the DSC2044 is in operational mode. Driving Enable to ground will tri-state both output drivers (hi-impedance mode).

Output Clock Frequencies

Table 1 lists the standard frequency configurations and the associated ordering information to be used in conjunction with the ordering code. Customer defined combinations are available.

Table 1. Pre-programmed pin-selectable output frequency combinations

| Ordering Info | Freq (MHz) | Freq Select Bits [FS2, FS1, FS0] – Default is [111] | | | | | | | |
|---------------|-------------------|--|--------|-----|-----|--------|--------|-----|---------------|
| | | 000 | 001 | 010 | 011 | 100 | 101 | 110 | 111 |
| H0001 | f _{OUT1} | 106.25 | 100 | 125 | 100 | 156.25 | 156.25 | 125 | 156.25 |
| | f _{OUT2} | 25 | 100 | 50 | 50 | 25 | 125 | 25 | 156.25 |
| H0002 | f _{OUT1} | 100 | 156.25 | 100 | 125 | 125 | 50 | 200 | 200 |
| | f _{OUT2} | 100 | 156.25 | 50 | 125 | 50 | 50 | 50 | 10 |
| H0003 | f _{OUT1} | 125 | 100 | 125 | 0* | 0* | 0* | 0* | 156.25 |
| | f _{OUT2} | 156.25 | 100 | 125 | 0* | 0* | 0* | 0* | 156.25 |
| H0004 | f _{OUT1} | 75 | 100 | 125 | 150 | 75 | 100 | 75 | 125 |
| | f _{OUT2} | 75 | 100 | 125 | 150 | 125 | 150 | 100 | 150 |
| HXXXX | f _{OUT1} | Contact factory for additional configurations. | | | | | | | |
| | f _{OUT2} | | | | | | | | |

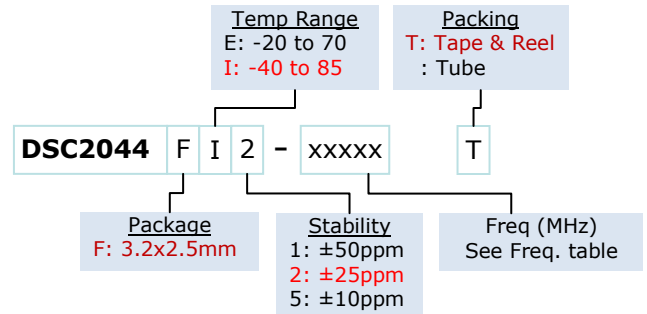
Frequency select bit are weakly tied high so if left unconnected the default setting will be [111] and the device will output the associated frequency highlighted in **Bold**
 0* – denotes invalid selection, output frequency is not specified.

Absolute Maximum Ratings

| Item | Min | Max | Unit | Condition |
|----------------|------|--------------|------|------------|
| Supply Voltage | -0.3 | +4.0 | V | |
| Input Voltage | -0.3 | $V_{DD}+0.3$ | V | |
| Junction Temp | - | +150 | °C | |
| Storage Temp | -55 | +150 | °C | |
| Soldering Temp | - | +260 | °C | 40sec max. |
| ESD | - | | V | |
| HBM | | 4000 | | |
| MM | | 400 | | |
| CDM | | 1500 | | |

Note: 1000+ years of data retention on internal memory

Ordering Code



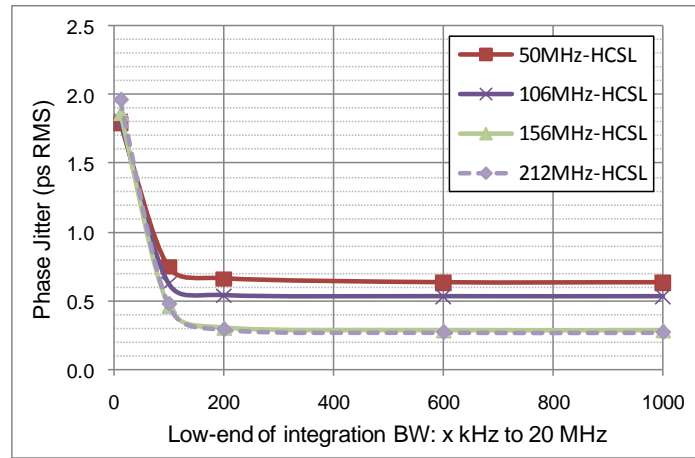
Specifications (Unless specified otherwise: T=25° C)

| Parameter | | Condition | Min. | Typ. | Max. | Unit |
|---|----------------------|--|---------------------|---------------------|---------------------|-------------------|
| Supply Voltage ¹ | V_{DD} | | 2.25 | | 3.6 | V |
| Supply Current | I_{DD} | EN pin low – outputs are disabled | | 21 | 23 | mA |
| Supply Current ² | I_{DD} | EN pin high – outputs are enabled $R_L=50\ \Omega$, $F_{O1}=F_{O2}=156.25\ \text{MHz}$ | | 60 | | mA |
| Frequency Stability | Δf | Includes frequency variations due to initial tolerance, temp. and power supply voltage | | | ±10 ±25 ±50 | ppm |
| Aging | Δf | 1 year @25°C | | | ±5 | ppm |
| Startup Time ³ | t_{SU} | T=25°C | | | 5 | ms |
| Input Logic Levels Input logic high Input logic low | V_{IH} V_{IL} | | 0.75x V_{DD} - | | - 0.25x V_{DD} | V |
| Output Disable Time ⁴ | t_{DA} | | | | 5 | ns |
| Output Enable Time | t_{EN} | | | | 20 | ns |
| Pull-Up Resistor ² | | Pull-up exists on all digital IO | | 40 | | k Ω |
| HCSL Outputs | | | | | | |
| Output Logic Levels Output logic high Output logic low | V_{OH} V_{OL} | $R_L=50\ \Omega$ | 0.725 - | | - 0.1 | V |
| Pk to Pk Output Swing | | Single-Ended | | 750 | | mV |
| Output Transition time ⁴ Rise Time Fall Time | t_R t_F | 20% to 80% $R_L=50\ \Omega$, $C_L= 2\ \text{pF}$ | 200 | | 400 | ps |
| Frequency | f_0 | Single Frequency | 2.3 | | 460 | MHz |
| Output Duty Cycle | SYM | Differential | 48 | | 52 | % |
| Period Jitter ⁵ | J_{PER} | $F_{O1}=F_{O2}=156.25\ \text{MHz}$ | | 2.8 | | ps _{RMS} |
| Integrated Phase Noise | J_{PH} | 200kHz to 20MHz @156.25MHz 100kHz to 20MHz @156.25MHz 12kHz to 20MHz @156.25MHz | | 0.25 0.37 1.7 | | ps _{RMS} |

Notes:

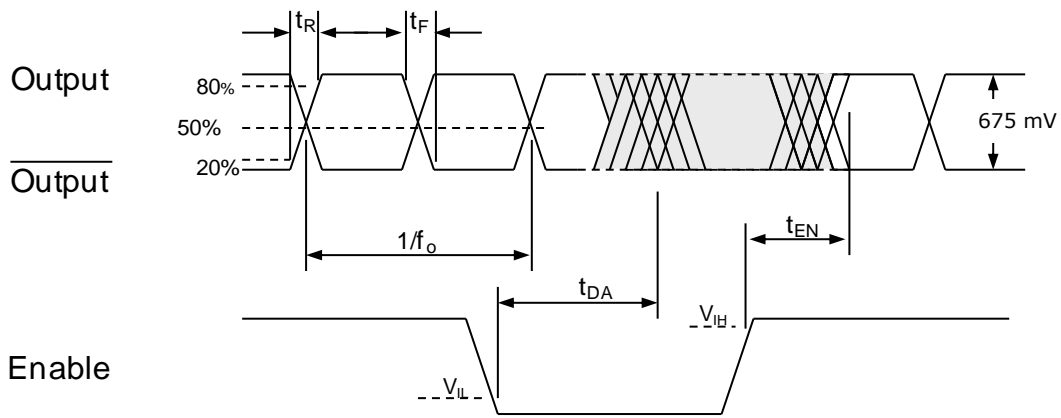
- Pin 4 V_{DD} should be filtered with 0.01uF capacitor.
- Output is enabled if Enable pad is floated or not connected.
- t_{SU} is time to 100PPM stable output frequency after V_{DD} is applied and outputs are enabled.
- Output Waveform and Test Circuit figures below define the parameters.
- Period Jitter includes crosstalk from adjacent output.

Nominal Performance Parameters (Unless specified otherwise: $T=25^{\circ}C$, $V_{DD}=3.3V$)

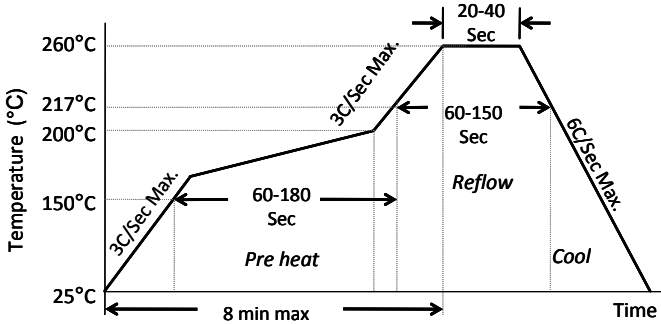


HCSL Phase jitter (integrated phase noise)

Output Waveform: HCSL



Solder Reflow Profile



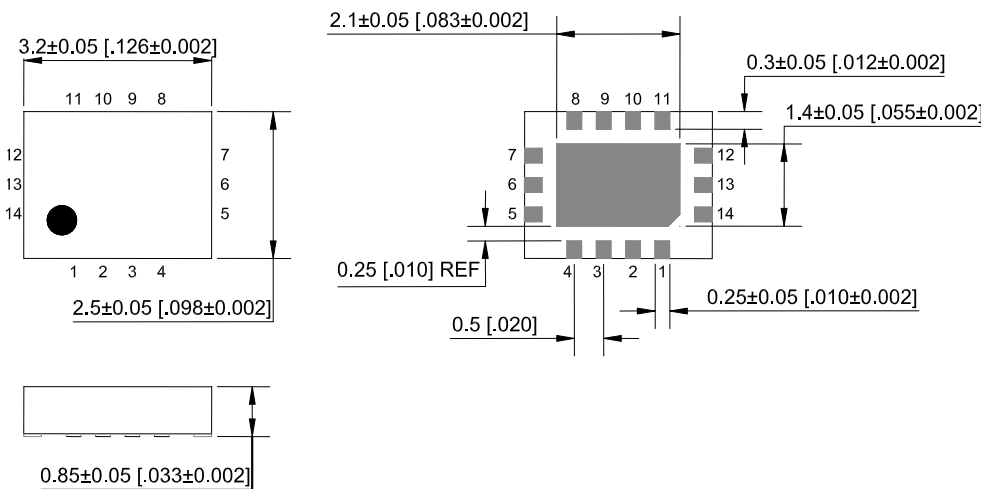
| MSL 1 @ 260°C refer to JSTD-020C | |
|-----------------------------------|--------------|
| Ramp-Up Rate (200°C to Peak Temp) | 3°C/Sec Max. |
| Preheat Time 150°C to 200°C | 60-180 Sec |
| Time maintained above 217°C | 60-150 Sec |
| Peak Temperature | 255-260°C |
| Time within 5°C of actual Peak | 20-40 Sec |
| Ramp-Down Rate | 6°C/Sec Max. |
| Time 25°C to Peak Temperature | 8 min Max. |

Package Dimensions

3.2 x 2.5 mm 14 Lead Plastic Package

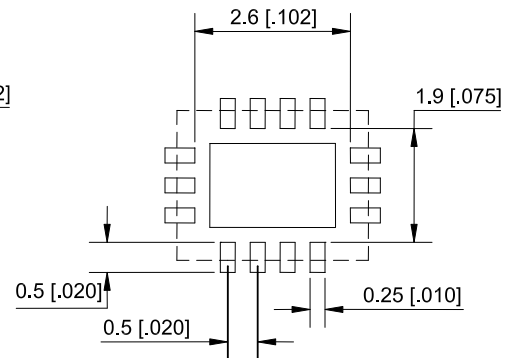
External Dimensions

units: mm[inch]



Recommended Solder Pad Layout

units: mm[inch]





Disclaimer:

Micrel makes no representations or warranties with respect to the accuracy or completeness of the information furnished in this data sheet. This information is not intended as a warranty and Micrel does not assume responsibility for its use. Micrel reserves the right to change circuitry, specifications and descriptions at any time without notice. No license, whether express, implied, arising by estoppel or otherwise, to any intellectual property rights is granted by this document. Except as provided in Micrel's terms and conditions of sale for such products, Micrel assumes no liability whatsoever, and Micrel disclaims any express or implied warranty relating to the sale and/or use of Micrel products including liability or warranties relating to fitness for a particular purpose, merchantability, or infringement of any patent, copyright or other intellectual property right.

Micrel Products are not designed or authorized for use as components in life support appliances, devices or systems where malfunction of a product can reasonably be expected to result in personal injury. Life support devices or systems are devices or systems that (a) are intended for surgical implant into the body or (b) support or sustain life, and whose failure to perform can be reasonably expected to result in a significant injury to the user. A Purchaser's use or sale of Micrel Products for use in life support appliances, devices or systems is a Purchaser's own risk and Purchaser agrees to fully indemnify Micrel for any damages resulting from such use or sale.

Looking for pricing, stock, or lifecycle information?

Click below to explore more details on WIN SOURCE:

-  [View DSC2044FE1-H0003 on WIN SOURCE](#)
-  [Microchip Technology](#) Information

Optimize Your Supply Chain with WIN SOURCE Solutions

-  Global Sourcing Solution
-  Obsolete Management
-  Cost Control Management
-  Shortage Management
-  Alternative Solution
-  Excess Inventory Management