



**THE DATASHEET OF
B39861B3589Z810**





SAW Components

Data Sheet B3589





SAW Components

B3589

Low-loss Filter

864,00 MHz

Data Sheet

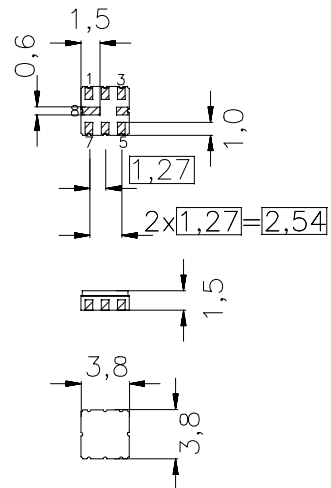
Features

- Low loss RF filter for wireless audio application
- Low amplitude ripple
- High image frequency suppression
- No matching network required for operation at 50 Ω
- Package for **Surface Mounted Technology (SMT)**

Terminals

- Ni, gold-plated

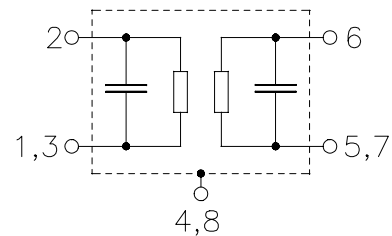
Ceramic package **QCC8B**



Dimensions in mm, approx. weight 0,07 g

Pin configuration

- 2 Input
- 1,3 Input Ground
- 6 Output
- 5,7 Output Ground
- 4,8 to be grounded



Type	Ordering code	Marking and Package according to	Packing according to
B3589	B39861-B3589-Z810	C61157-A7-A46	F61074-V8037-Z000

Electrostatic Sensitive Device (ESD)

Maximum ratings

Operable temperature range	T	0/+40	°C	source impedance 50 Ω
Storage temperature range	T_{stg}	-40/+85	°C	
DC voltage	V_{DC}	0	V	
Source power	P_S	0	dBm	



SAW Components

B3589

Low-loss Filter

864,00 MHz

Data Sheet

Characteristics

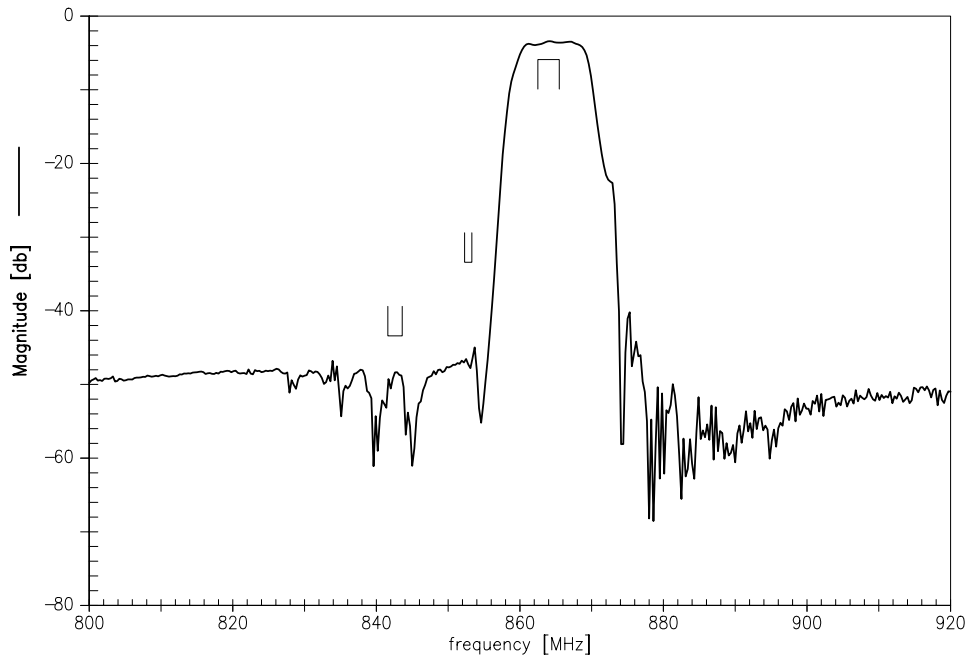
Operating temperature range: $T = 0 \dots 40 \text{ }^\circ\text{C}$
 Terminating source impedance: $Z_S = 50 \text{ } \Omega$
 Terminating load impedance: $Z_L = 50 \text{ } \Omega$

		min.	typ.	max.	
Center frequency	f_c	—	864,00	—	MHz
Maximum insertion attenuation	α_{\max}				
	862,50 ... 865,50 MHz	—	4,0	6,0	dB
Amplitude ripple	$\Delta\alpha$				
	862,50 ... 865,50 MHz	—	1,5	2,5	dB
Relative attenuation (relative to α_{\max})	α_{rel}				
	841,60 ... 843,60 MHz	40,0	44,0	—	dB
	852,30 ... 853,30 MHz	30,0	38,0	—	dB
Temperature coefficient of frequency	TC_f	—	-30	—	ppm/K

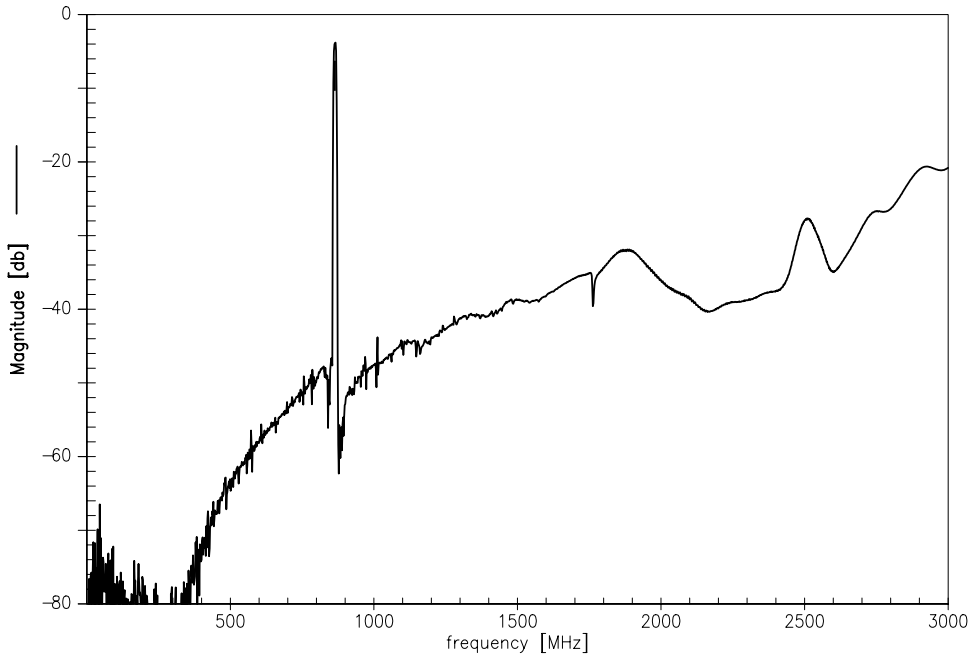


Data Sheet

Transfer function



Transfer function (wideband)





SAW Components

B3589

Low-loss Filter

864,00 MHz

Data Sheet

Published by EPCOS AG

Surface Acoustic Wave Components Division, SAW CE AE

P.O. Box 80 17 09, 81617 Munich, GERMANY

©.EPCOS AG 2002. Reproduction, publication and dissemination of this brochure and the information contained therein without EPCOS' prior express consent is prohibited.

Purchase orders are subject to the General Conditions for the Supply of Products and Services of the Electrical and Electronics Industry recommended by the ZVEI (German Electrical and Electronic Manufacturers' Association), unless otherwise agreed.



This brochure replaces the previous edition.

For questions on technology, prices and delivery please contact the Sales Offices of EPCOS AG or the international Representatives.

Due to technical requirements components may contain dangerous substances. For information on the type in question please also contact one of our Sales Offices.

Looking for pricing, stock, or lifecycle information?

Click below to explore more details on WIN SOURCE:

-  [View B39861B3589Z810 on WIN SOURCE](#)
-  [Qualcomm Information](#)

Optimize Your Supply Chain with WIN SOURCE Solutions

-  Global Sourcing Solution
-  Obsolete Management
-  Cost Control Management
-  Shortage Management
-  Alternative Solution
-  Excess Inventory Management