



**THE DATASHEET OF  
AD9251BCPZRL7-40**



### FEATURES

- 1.8 V analog supply operation
- 1.8 V to 3.3 V output supply
- SNR
  - 74.3 dBFS at 9.7 MHz input
  - 71.5 dBFS at 200 MHz input
- SFDR
  - 93 dBc at 9.7 MHz input
  - 80 dBc at 200 MHz input
- Low power
  - 33 mW per channel at 20 MSPS
  - 73 mW per channel at 80 MSPS
- Differential input with 700 MHz bandwidth
- On-chip voltage reference and sample-and-hold circuit
- 2 V p-p differential analog input
- DNL =  $\pm 0.45$  LSB
- Serial port control options
  - Offset binary, gray code, or twos complement data format
  - Optional clock duty cycle stabilizer
  - Integer 1-to-8 input clock divider
  - Data output multiplex option
  - Built-in selectable digital test pattern generation
  - Energy-saving power-down modes
  - Data clock out with programmable clock and data alignment

### APPLICATIONS

- Communications
- Diversity radio systems
- Multimode digital receivers
  - GSM, EDGE, W-CDMA, LTE, CDMA2000, WiMAX, TD-SCDMA
- I/Q demodulation systems
- Smart antenna systems
- Battery-powered instruments
- Hand held scope meters
- Portable medical imaging
- Ultrasound
- Radar/LIDAR

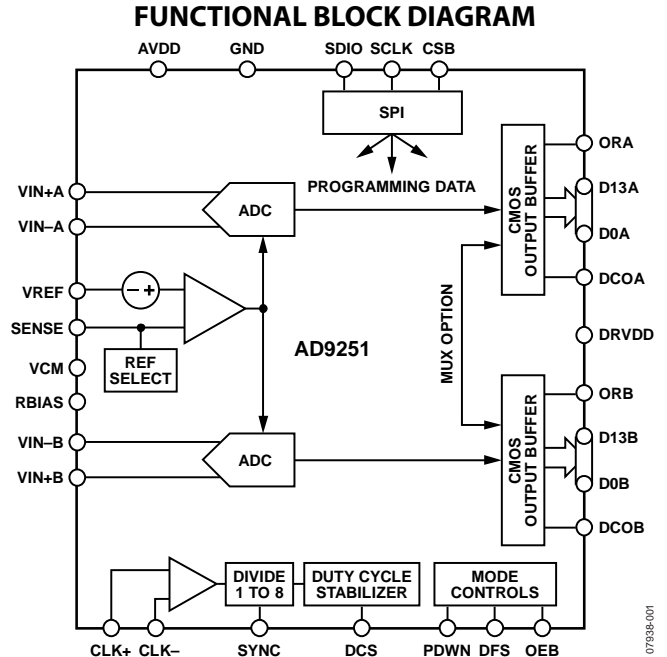


Figure 1.

### PRODUCT HIGHLIGHTS

1. The AD9251 operates from a single 1.8 V analog power supply and features a separate digital output driver supply to accommodate 1.8 V to 3.3 V logic families.
2. The patented sample-and-hold circuit maintains excellent performance for input frequencies up to 200 MHz and is designed for low cost, low power, and ease of use.
3. A standard serial port interface supports various product features and functions, such as data output formatting, internal clock divider, power-down, DCO/DATA timing and offset adjustments, and voltage reference modes.
4. The AD9251 is packaged in a 64-lead RoHS compliant LFCSP that is pin compatible with the [AD9268](#) 16-bit ADC, the [AD9258](#) 14-bit ADC, the [AD9231](#) 12-bit ADC, and the [AD9204](#) 10-bit ADC, enabling a simple migration path between 10-bit and 16-bit converters sampling from 20 MSPS to 125 MSPS.

## TABLE OF CONTENTS

|  |    |   |    |
|--|----|---|----|
| Features .....                                   | 1  | Voltage Reference .....                         | 23 |
| Applications.....                                | 1  | Clock Input Considerations.....                 | 24 |
| Functional Block Diagram .....                   | 1  | Channel/Chip Synchronization.....               | 26 |
| Product Highlights .....                         | 1  | Power Dissipation and Standby Mode .....        | 26 |
| Revision History .....                           | 2  | Digital Outputs .....                           | 27 |
| General Description .....                        | 3  | Timing .....                                    | 27 |
| Specifications.....                              | 4  | Built-In Self-Test (BIST) and Output Test ..... | 28 |
| DC Specifications .....                          | 4  | Built-In Self-Test (BIST).....                  | 28 |
| AC Specifications.....                           | 5  | Output Test Modes.....                          | 28 |
| Digital Specifications .....                     | 6  | Serial Port Interface (SPI).....                | 29 |
| Switching Specifications .....                   | 7  | Configuration Using the SPI.....                | 29 |
| Timing Specifications .....                      | 8  | Hardware Interface.....                         | 30 |
| Absolute Maximum Ratings.....                    | 10 | Configuration Without the SPI .....             | 30 |
| Thermal Characteristics .....                    | 10 | SPI Accessible Features.....                    | 30 |
| ESD Caution.....                                 | 10 | Memory Map .....                                | 31 |
| Pin Configuration and Function Descriptions..... | 11 | Reading the Memory Map Register Table.....      | 31 |
| Typical Performance Characteristics .....        | 13 | Open Locations .....                            | 31 |
| AD9251-80 .....                                  | 13 | Default Values .....                            | 31 |
| AD9251-65 .....                                  | 15 | Memory Map Register Table.....                  | 32 |
| AD9251-40 .....                                  | 16 | Memory Map Register Descriptions.....           | 34 |
| AD9251-20 .....                                  | 17 | Applications Information .....                  | 35 |
| Equivalent Circuits .....                        | 18 | Design Guidelines .....                         | 35 |
| Theory of Operation .....                        | 20 | Outline Dimensions .....                        | 36 |
| ADC Architecture .....                           | 20 | Ordering Guide .....                            | 36 |
| Analog Input Considerations.....                 | 20 |   |    |

## REVISION HISTORY

### 6/2021—Rev. B to Rev. C

|                                 |    |
|---------------------------------|----|
| Changes to Table 7.....         | 10 |
| Changes to Figure 5.....        | 11 |
| Updated Outline Dimensions..... | 36 |
| Changes to Ordering Guide ..... | 36 |

### 9/2016—Rev. A to Rev. B

|                          |   |
|--------------------------|---|
| Changes to Figure 3..... | 8 |
|--------------------------|---|

### 10/2009—Rev. 0 to Rev. A

|                          |   |
|--------------------------|---|
| Changes to Features..... | 1 |
|--------------------------|---|

|   |    |
|---|----|
| Change to Table 1 .....   | 4  |
| Moved Timing Diagrams .....                                       | 8  |
| Deleted Table 11; Renumbered Sequentially .....                   | 22 |
| Changes to Internal Reference Connection Section.....             | 23 |
| Moved Channel/Chip Synchronization Section.....                   | 26 |
| Change to Table 15 .....  | 30 |
| Changes to Reading the Memory Map Register<br>Table Section ..... | 31 |
| Changes to Table 16 .....   | 32 |

### 7/2009—Revision 0: Initial Version

## GENERAL DESCRIPTION

The AD9251 is a monolithic, dual-channel, 1.8 V supply, 14-bit, 20 MSPS/40 MSPS/65 MSPS/80 MSPS analog-to-digital converter (ADC). It features a high performance sample-and-hold circuit and on-chip voltage reference.

The product uses multistage differential pipeline architecture with output error correction logic to provide 14-bit accuracy at 80 MSPS data rates and to guarantee no missing codes over the full operating temperature range.

The ADC contains several features designed to maximize flexibility and minimize system cost, such as programmable clock and data alignment and programmable digital test pattern generation. The available digital test patterns include built-in deterministic and pseudorandom patterns, along with custom user-defined test patterns entered via the serial port interface (SPI).

A differential clock input controls all internal conversion cycles. An optional duty cycle stabilizer (DCS) compensates for wide variations in the clock duty cycle while maintaining excellent overall ADC performance.

The digital output data is presented in offset binary, gray code, or twos complement format. A data output clock (DCO) is provided for each ADC channel to ensure proper latch timing with receiving logic. Both 1.8 V and 3.3 V CMOS levels are supported and output data can be multiplexed onto a single output bus.

The AD9251 is available in a 64-lead RoHS Compliant LFCSP and is specified over the industrial temperature range ( $-40^{\circ}\text{C}$  to  $+85^{\circ}\text{C}$ ).

## SPECIFICATIONS

### DC SPECIFICATIONS

AVDD = 1.8 V; DRVDD = 1.8 V, maximum sample rate, 2 V p-p differential input, 1.0 V internal reference; AIN = -1.0 dBFS, DCS disabled, unless otherwise noted.

Table 1.

| Parameter                                    | Temp | AD9251-20/AD9251-40 |           |            | AD9251-65  |       |       | AD9251-80  |       |       | Unit    |
|--|------|---------------------|-----------|------------|------------|-------|-------|------------|-------|-------|---------|
|  |      | Min                 | Typ       | Max        | Min        | Typ   | Max   | Min        | Typ   | Max   |         |
| RESOLUTION                                   | Full | 14                  |           |            | 14         |       |       | 14         |       |       | Bits    |
| ACCURACY                                     |      | Guaranteed          |           |            | Guaranteed |       |       | Guaranteed |       |       |         |
| No Missing Codes                             | Full | Guaranteed          |           |            | Guaranteed |       |       | Guaranteed |       |       |         |
| Offset Error                                 | Full |                     | ±0.1      | ±0.70      |            | ±0.1  | ±0.50 |            | ±0.1  | ±0.70 | % FSR   |
| Gain Error <sup>1</sup>                      | Full |                     | -1.5      |            |            | -1.5  |       |            | -1.5  |       | % FSR   |
| Differential Nonlinearity (DNL) <sup>2</sup> | Full |                     |           | ±0.60      |            |       | ±0.75 |            |       | ±0.70 | LSB     |
|  | 25°C |                     | ±0.3      |            |            | ±0.45 |       |            | ±0.45 |       | LSB     |
| Integral Nonlinearity (INL) <sup>2</sup>     | Full |                     |           | ±1.75      |            |       | ±1.75 |            |       | ±2.50 | LSB     |
|  | 25°C |                     | ±0.6      |            |            | ±0.6  |       |            | ±1.0  |       | LSB     |
| MATCHING CHARACTERISTICS                     |      |                     |           |            |            |       |       |            |       |       |         |
| Offset Error                                 | 25°C |                     | ±0.0      | ±0.65      |            | ±0.0  | ±0.65 |            | ±0.0  | ±0.65 | % FSR   |
| Gain Error <sup>1</sup>                      | 25°C |                     | ±0.2      |            |            | ±0.2  |       |            | ±0.2  |       | % FSR   |
| TEMPERATURE DRIFT                            |      |                     |           |            |            |       |       |            |       |       |         |
| Offset Error                                 | Full |                     | ±2        |            |            | ±2    |       |            | ±2    |       | ppm/°C  |
| INTERNAL VOLTAGE REFERENCE                   |      |                     |           |            |            |       |       |            |       |       |         |
| Output Voltage (1 V Mode)                    | Full | 0.981               | 0.993     | 1.005      | 0.981      | 0.993 | 1.005 | 0.981      | 0.993 | 1.005 | V       |
| Load Regulation Error at 1.0 mA              | Full |                     | 2         |            |            | 2     |       |            | 2     |       | mV      |
| INPUT-REFERRED NOISE                         |      |                     |           |            |            |       |       |            |       |       |         |
| VREF = 1.0 V                                 | 25°C |                     | 0.98      |            |            | 0.98  |       |            | 0.98  |       | LSB rms |
| ANALOG INPUT                                 |      |                     |           |            |            |       |       |            |       |       |         |
| Input Span, VREF = 1.0 V                     | Full |                     | 2         |            |            | 2     |       |            | 2     |       | V p-p   |
| Input Capacitance <sup>3</sup>               | Full |                     | 6         |            |            | 6     |       |            | 6     |       | pF      |
| Input Common-Mode Voltage                    | Full |                     | 0.9       |            |            | 0.9   |       |            | 0.9   |       | V       |
| Input Common-Mode Range                      | Full | 0.5                 |           | 1.3        | 0.5        |       | 1.3   | 0.5        |       | 1.3   | V       |
| REFERENCE INPUT RESISTANCE                   | Full |                     | 7.5       |            |            | 7.5   |       |            | 7.5   |       | kΩ      |
| POWER SUPPLIES                               |      |                     |           |            |            |       |       |            |       |       |         |
| Supply Voltage                               |      |                     |           |            |            |       |       |            |       |       |         |
| AVDD   | Full | 1.7                 | 1.8       | 1.9        | 1.7        | 1.8   | 1.9   | 1.7        | 1.8   | 1.9   | V       |
| DRVDD  | Full | 1.7                 |           | 3.6        | 1.7        |       | 3.6   | 1.7        |       | 3.6   | V       |
| Supply Current                               |      |                     |           |            |            |       |       |            |       |       |         |
| IAVDD <sup>2</sup>                           | Full |                     | 36.5/49.5 | 39.4/52.8  |            | 69.0  | 72.9  |            | 80.5  | 85.5  | mA      |
| IDRVDD <sup>2</sup> (1.8 V)                  | Full |                     | 3.4/5.6   |            |            | 8.4   |       |            | 10.3  |       | mA      |
| IDRVDD <sup>2</sup> (3.3 V)                  | Full |                     | 6.3/10.6  |            |            | 16.0  |       |            | 19.5  |       | mA      |
| POWER CONSUMPTION                            |      |                     |           |            |            |       |       |            |       |       |         |
| DC Input                                     | Full |                     | 66/89     |            |            | 125   |       |            | 145   |       | mW      |
| Sine Wave Input <sup>2</sup> (DRVDD = 1.8 V) | Full |                     | 71.8/99   | 77.0/105.5 |            | 139.0 | 146.5 |            | 163.4 | 173   | mW      |
| Sine Wave Input <sup>2</sup> (DRVDD = 3.3 V) | Full |                     | 86.5/124  |            |            | 176.7 |       |            | 209   |       | mW      |
| Standby Power <sup>4</sup>                   | Full |                     | 37        |            |            | 37    |       |            | 37    |       | mW      |
| Power-Down Power                             | Full |                     | 2.2       |            |            | 2.2   |       |            | 2.2   |       | mW      |

<sup>1</sup> Measured with 1.0 V external reference.

<sup>2</sup> Measured with a 10 MHz input frequency at rated sample rate, full-scale sine wave, with approximately 5 pF loading on each output bit.

<sup>3</sup> Input capacitance refers to the effective capacitance between one differential input pin and AGND.

<sup>4</sup> Standby power is measured with a dc input and the CLK active.

## AC SPECIFICATIONS

AVDD = 1.8 V; DRVDD = 1.8 V, maximum sample rate, 2 V p-p differential input, 1.0 V internal reference; AIN = -1.0 dBFS, DCS disabled, unless otherwise noted.

Table 2.

| Parameter <sup>1</sup>                            | Temp | AD9251-20/AD9251-40 |      |     | AD9251-65 |      |     | AD9251-80 |      |     | Unit |
|---|------|---------------------|------|-----|-----------|------|-----|-----------|------|-----|------|
|   |      | Min                 | Typ  | Max | Min       | Typ  | Max | Min       | Typ  | Max |      |
| SIGNAL-TO-NOISE RATIO (SNR)                       |      |                     |      |     |           |      |     |           |      |     |      |
| $f_{IN} = 9.7$ MHz                                | 25°C |                     | 74.7 |     |           | 74.5 |     |           | 74.3 |     | dBFS |
| $f_{IN} = 30.5$ MHz                               | 25°C |                     | 74.4 |     |           | 74.3 |     |           | 74.1 |     | dBFS |
|   | Full | 73.6                |      |     | 73.6      |      |     |           |      |     | dBFS |
| $f_{IN} = 70$ MHz                                 | 25°C |                     | 73.7 |     |           | 73.7 |     |           | 73.6 |     | dBFS |
|   | Full |                     |      |     |           |      |     | 72.5      |      |     | dBFS |
| $f_{IN} = 200$ MHz                                | 25°C |                     | 71.5 |     |           | 71.5 |     |           | 71.5 |     | dBFS |
| SIGNAL-TO-NOISE-AND-DISTORTION (SINAD)            |      |                     |      |     |           |      |     |           |      |     |      |
| $f_{IN} = 9.7$ MHz                                | 25°C |                     | 74.6 |     |           | 74.4 |     |           | 74.1 |     | dBFS |
| $f_{IN} = 30.5$ MHz                               | 25°C |                     | 74.3 |     |           | 74.2 |     |           | 74.0 |     | dBFS |
|   | Full | 73.4                |      |     | 73.4      |      |     |           |      |     | dBFS |
| $f_{IN} = 70$ MHz                                 | 25°C |                     | 73.6 |     |           | 73.6 |     |           | 73.5 |     | dBFS |
|   | Full |                     |      |     |           |      |     | 72.4      |      |     | dBFS |
| $f_{IN} = 200$ MHz                                | 25°C |                     | 70.0 |     |           | 70.0 |     |           | 70.0 |     | dBFS |
| EFFECTIVE NUMBER OF BITS (ENOB)                   |      |                     |      |     |           |      |     |           |      |     |      |
| $f_{IN} = 9.7$ MHz                                | 25°C |                     | 12.0 |     |           | 12.0 |     |           | 12.0 |     | Bits |
| $f_{IN} = 30.5$ MHz                               | 25°C |                     | 12.0 |     |           | 12.0 |     |           | 12.0 |     | Bits |
| $f_{IN} = 70$ MHz                                 | 25°C |                     | 11.9 |     |           | 11.9 |     |           | 11.9 |     | Bits |
| $f_{IN} = 200$ MHz                                | 25°C |                     | 11.3 |     |           | 11.3 |     |           | 11.3 |     | Bits |
| WORST SECOND OR THIRD HARMONIC                    |      |                     |      |     |           |      |     |           |      |     |      |
| $f_{IN} = 9.7$ MHz                                | 25°C |                     | -95  |     |           | -95  |     |           | -93  |     | dBc  |
| $f_{IN} = 30.5$ MHz                               | 25°C |                     | -95  |     |           | -95  |     |           | -93  |     | dBc  |
|   | Full |                     |      | -81 |           |      | -81 |           |      |     | dBc  |
| $f_{IN} = 70$ MHz                                 | 25°C |                     | -94  |     |           | -94  |     |           | -92  |     | dBc  |
|   | Full |                     |      |     |           |      |     |           | -81  |     | dBc  |
| $f_{IN} = 200$ MHz                                | 25°C |                     | -80  |     |           | -80  |     |           | -80  |     | dBc  |
| SPURIOUS-FREE DYNAMIC RANGE (SFDR)                |      |                     |      |     |           |      |     |           |      |     |      |
| $f_{IN} = 9.7$ MHz                                | 25°C |                     | 95   |     |           | 95   |     |           | 93   |     | dBc  |
| $f_{IN} = 30.5$ MHz                               | 25°C |                     | 94   |     |           | 94   |     |           | 93   |     | dBc  |
|   | Full | 81                  |      |     | 81        |      |     |           |      |     | dBc  |
| $f_{IN} = 70$ MHz                                 | 25°C |                     | 93   |     |           | 93   |     |           | 92   |     | dBc  |
|   | Full |                     |      |     |           |      |     | 81        |      |     | dBc  |
| $f_{IN} = 200$ MHz                                | 25°C |                     | 80   |     |           | 80   |     |           | 80   |     | dBc  |
| WORST OTHER (HARMONIC OR SPUR)                    |      |                     |      |     |           |      |     |           |      |     |      |
| $f_{IN} = 9.7$ MHz                                | 25°C |                     | -98  |     |           | -98  |     |           | -97  |     | dBc  |
| $f_{IN} = 30.5$ MHz                               | 25°C |                     | -98  |     |           | -98  |     |           | -97  |     | dBc  |
|   | Full |                     |      | -90 |           |      | -90 |           |      |     | dBc  |
| $f_{IN} = 70$ MHz                                 | 25°C |                     | -98  |     |           | -98  |     |           | -96  |     | dBc  |
|   | Full |                     |      |     |           |      |     |           | -89  |     | dBc  |
| $f_{IN} = 200$ MHz                                | 25°C |                     | -95  |     |           | -95  |     |           | -95  |     | dBc  |
| TWO-TONE SFDR                                     |      |                     |      |     |           |      |     |           |      |     |      |
| $f_{IN} = 30.5$ MHz (-7 dBFS), 32.5 MHz (-7 dBFS) | 25°C |                     | 90   |     |           | 90   |     |           | 90   |     | dBc  |
| CROSSTALK <sup>2</sup>                            | Full |                     | -110 |     |           | -110 |     |           | -110 |     | dBc  |
| ANALOG INPUT BANDWIDTH                            | 25°C |                     | 700  |     |           | 700  |     |           | 700  |     | MHz  |

<sup>1</sup> See the AN-835 Application Note, *Understanding High Speed ADC Testing and Evaluation*, for a complete set of definitions.

<sup>2</sup> Crosstalk is measured at 100 MHz with -1.0 dBFS on one channel and no input on the alternate channel.

**DIGITAL SPECIFICATIONS**

AVDD = 1.8 V; DRVDD = 1.8 V, maximum sample rate, 2 V p-p differential input, 1.0 V internal reference; AIN = -1.0 dBFS, DCS disabled, unless otherwise noted.

Table 3.

| Parameter  | Temp | AD9251-20/AD9251-40/AD9251-65/AD9251-80 |                  |             | Unit  |
|--|------|---|------------------|-------------|-------|
|  |      | Min                                     | Typ              | Max         |       |
| <b>DIFFERENTIAL CLOCK INPUTS (CLK+, CLK-)</b>          |      |   |                  |             |       |
| Logic Compliance                                       |      |   | CMOS/LVDS/LVPECL |             |       |
| Internal Common-Mode Bias                              | Full |   | 0.9              |             | V     |
| Differential Input Voltage                             | Full | 0.2                                     |                  | 3.6         | V p-p |
| Input Voltage Range                                    | Full | GND - 0.3                               |                  | AVDD + 0.2  | V     |
| High Level Input Current                               | Full | -10                                     |                  | +10         | μA    |
| Low Level Input Current                                | Full | -10                                     |                  | +10         | μA    |
| Input Resistance                                       | Full | 8                                       | 10               | 12          | kΩ    |
| Input Capacitance                                      | Full |   | 4                |             | pF    |
| <b>LOGIC INPUTS (SCLK/DFS, SYNC, PDWN)<sup>1</sup></b> |      |   |                  |             |       |
| High Level Input Voltage                               | Full | 1.2                                     |                  | DRVDD + 0.3 | V     |
| Low Level Input Voltage                                | Full | 0                                       |                  | 0.8         | V     |
| High Level Input Current                               | Full | -50                                     |                  | -75         | μA    |
| Low Level Input Current                                | Full | -10                                     |                  | +10         | μA    |
| Input Resistance                                       | Full |   | 30               |             | kΩ    |
| Input Capacitance                                      | Full |   | 2                |             | pF    |
| <b>LOGIC INPUTS (CSB)<sup>2</sup></b>                  |      |   |                  |             |       |
| High Level Input Voltage                               | Full | 1.2                                     |                  | DRVDD + 0.3 | V     |
| Low Level Input Voltage                                | Full | 0                                       |                  | 0.8         | V     |
| High Level Input Current                               | Full | -10                                     |                  | +10         | μA    |
| Low Level Input Current                                | Full | 40                                      |                  | 135         | μA    |
| Input Resistance                                       | Full |   | 26               |             | kΩ    |
| Input Capacitance                                      | Full |   | 2                |             | pF    |
| <b>LOGIC INPUTS (SDIO/DCS)<sup>2</sup></b>             |      |   |                  |             |       |
| High Level Input Voltage                               | Full | 1.2                                     |                  | DRVDD + 0.3 | V     |
| Low Level Input Voltage                                | Full | 0                                       |                  | 0.8         | V     |
| High Level Input Current                               | Full | -10                                     |                  | +10         | μA    |
| Low Level Input Current                                | Full | 40                                      |                  | 130         | μA    |
| Input Resistance                                       | Full |   | 26               |             | kΩ    |
| Input Capacitance                                      | Full |   | 5                |             | pF    |
| <b>DIGITAL OUTPUTS</b>                                 |      |   |                  |             |       |
| DRVDD = 3.3 V  |      |   |                  |             |       |
| High Level Output Voltage, I <sub>OH</sub> = 50 μA     | Full | 3.29                                    |                  |             | V     |
| High Level Output Voltage, I <sub>OH</sub> = 0.5 mA    | Full | 3.25                                    |                  |             | V     |
| Low Level Output Voltage, I <sub>OL</sub> = 1.6 mA     | Full |   |                  | 0.2         | V     |
| Low Level Output Voltage, I <sub>OL</sub> = 50 μA      | Full |   |                  | 0.05        | V     |
| DRVDD = 1.8 V  |      |   |                  |             |       |
| High Level Output Voltage, I <sub>OH</sub> = 50 μA     | Full | 1.79                                    |                  |             | V     |
| High Level Output Voltage, I <sub>OH</sub> = 0.5 mA    | Full | 1.75                                    |                  |             | V     |
| Low Level Output Voltage, I <sub>OL</sub> = 1.6 mA     | Full |   |                  | 0.2         | V     |
| Low Level Output Voltage, I <sub>OL</sub> = 50 μA      | Full |   |                  | 0.05        | V     |

<sup>1</sup> Internal 30 kΩ pull-down.<sup>2</sup> Internal 30 kΩ pull-up.

**SWITCHING SPECIFICATIONS**

AVDD = 1.8 V; DRVDD = 1.8 V, maximum sample rate, 2 V p-p differential input, 1.0 V internal reference; AIN = -1.0 dBFS, DCS disabled, unless otherwise noted.

**Table 4.**

| Parameter                                       | Temp | AD9251-20/AD9251-40 |           |       | AD9251-65 |      |     | AD9251-80 |      |     | Unit   |
|---|------|---------------------|-----------|-------|-----------|------|-----|-----------|------|-----|--------|
|   |      | Min                 | Typ       | Max   | Min       | Typ  | Max | Min       | Typ  | Max |        |
| CLOCK INPUT PARAMETERS                          |      |                     |           |       |           |      |     |           |      |     |        |
| Input Clock Rate                                | Full |                     |           | 625   |           |      | 625 |           |      | 625 | MHz    |
| Conversion Rate <sup>1</sup>                    | Full | 3                   |           | 20/40 | 3         |      | 65  | 3         |      | 80  | MSPS   |
| CLK Period—Divide-by-1 Mode (t <sub>CLK</sub> ) | Full | 50/25               |           |       | 15.38     |      |     | 12.5      |      |     | ns     |
| CLK Pulse Width High (t <sub>CH</sub> )         |      |                     | 25.0/12.5 |       |           | 7.69 |     |           | 6.25 |     | ns     |
| Aperture Delay (t <sub>A</sub> )                | Full |                     | 1.0       |       |           | 1.0  |     |           | 1.0  |     | ns     |
| Aperture Uncertainty (Jitter, t <sub>J</sub> )  | Full |                     | 0.1       |       |           | 0.1  |     |           | 0.1  |     | ps rms |
| DATA OUTPUT PARAMETERS                          |      |                     |           |       |           |      |     |           |      |     |        |
| Data Propagation Delay (t <sub>PD</sub> )       | Full |                     | 3         |       |           | 3    |     |           | 3    |     | ns     |
| DCO Propagation Delay (t <sub>DCO</sub> )       | Full |                     | 3         |       |           | 3    |     |           | 3    |     | ns     |
| DCO to Data Skew (t <sub>SKEW</sub> )           | Full |                     | 0.1       |       |           | 0.1  |     |           | 0.1  |     | ns     |
| Pipeline Delay (Latency)                        | Full |                     | 9         |       |           | 9    |     |           | 9    |     | Cycles |
| Wake-Up Time <sup>2</sup>                       | Full |                     | 350       |       |           | 350  |     |           | 350  |     | μs     |
| Standby   | Full |                     | 600/400   |       |           | 300  |     |           | 260  |     | ns     |
| OUT-OF-RANGE RECOVERY TIME                      | Full |                     | 2         |       |           | 2    |     |           | 2    |     | Cycles |

<sup>1</sup> Conversion rate is the clock rate after the CLK divider.

<sup>2</sup> Wake-up time is dependent on the value of the decoupling capacitors.

**TIMING SPECIFICATIONS**

Table 5.

| Parameter                       | Conditions  | Min | Typ  | Max | Unit |
|---------------------------------|---|-----|------|-----|------|
| <b>SYNC TIMING REQUIREMENTS</b> |   |     |      |     |      |
| $t_{SSYNC}$                     | SYNC to rising edge of CLK setup time   |     | 0.24 |     | ns   |
| $t_{HSYNC}$                     | SYNC to rising edge of CLK hold time  |     | 0.40 |     | ns   |
| <b>SPI TIMING REQUIREMENTS</b>  |   |     |      |     |      |
| $t_{DS}$                        | Setup time between the data and the rising edge of SCLK   | 2   |      |     | ns   |
| $t_{DH}$                        | Hold time between the data and the rising edge of SCLK  | 2   |      |     | ns   |
| $t_{CLK}$                       | Period of the SCLK  | 40  |      |     | ns   |
| $t_s$                           | Setup time between CSB and SCLK   | 2   |      |     | ns   |
| $t_h$                           | Hold time between CSB and SCLK  | 2   |      |     | ns   |
| $t_{HIGH}$                      | SCLK pulse width high   | 10  |      |     | ns   |
| $t_{LOW}$                       | SCLK pulse width low  | 10  |      |     | ns   |
| $t_{EN\_SDIO}$                  | Time required for the SDIO pin to switch from an input to an output relative to the SCLK falling edge | 10  |      |     | ns   |
| $t_{DIS\_SDIO}$                 | Time required for the SDIO pin to switch from an output to an input relative to the SCLK rising edge  | 10  |      |     | ns   |

**Timing Diagrams**

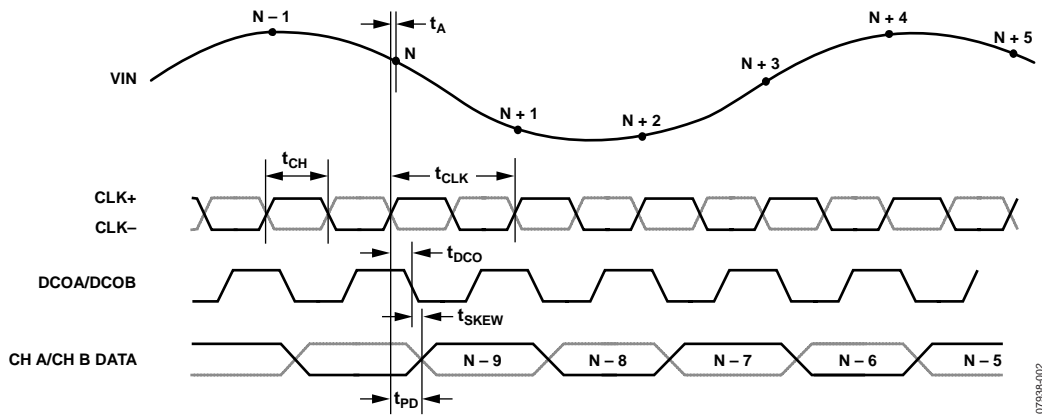


Figure 2. CMOS Output Data Timing

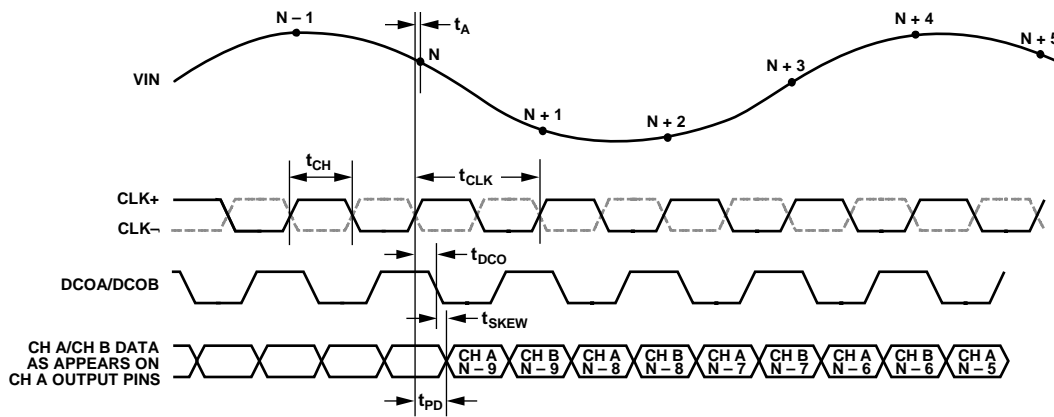


Figure 3. CMOS Interleaved Output Timing, Output as Appears on Channel A Output Pins

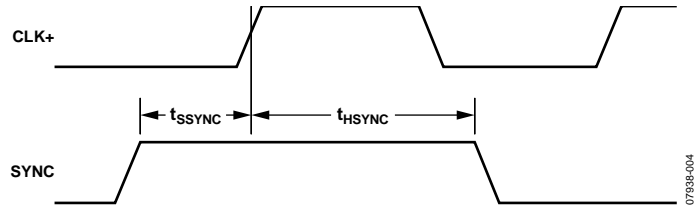


Figure 4. SYNC Input Timing Requirements

## ABSOLUTE MAXIMUM RATINGS

Table 6.

| Parameter                                  | Rating                  |
|--|-------------------------|
| AVDD to AGND                               | −0.3 V to +2.0 V        |
| DRVDD to AGND                              | −0.3 V to +3.9 V        |
| VIN+A, VIN+B, VIN−A, VIN−B to AGND         | −0.3 V to AVDD + 0.2 V  |
| CLK+, CLK− to AGND                         | −0.3 V to AVDD + 0.2 V  |
| SYNC to AGND                               | −0.3 V to DRVDD + 0.3 V |
| VREF to AGND                               | −0.3 V to AVDD + 0.2 V  |
| SENSE to AGND                              | −0.3 V to AVDD + 0.2 V  |
| VCM to AGND                                | −0.3 V to AVDD + 0.2 V  |
| RBIAS to AGND                              | −0.3 V to AVDD + 0.2 V  |
| CSB to AGND                                | −0.3 V to DRVDD + 0.3 V |
| SCLK/DFS to AGND                           | −0.3 V to DRVDD + 0.3 V |
| SDIO/DCS to AGND                           | −0.3 V to DRVDD + 0.3 V |
| OEB to AGND                                | −0.3 V to DRVDD + 0.3 V |
| PDWN to AGND                               | −0.3 V to DRVDD + 0.3 V |
| D0A/D0B through D13A/D13B to AGND          | −0.3 V to DRVDD + 0.3 V |
| DCOA/DCOB to AGND                          | −0.3 V to DRVDD + 0.3 V |
| Operating Temperature Range (Ambient)      | −40°C to +85°C          |
| Maximum Junction Temperature<br>Under Bias | 150°C                   |
| Storage Temperature Range (Ambient)        | −65°C to +150°C         |

Stresses at or above those listed under Absolute Maximum Ratings may cause permanent damage to the product. This is a stress rating only; functional operation of the product at these or any other conditions above those indicated in the operational section of this specification is not implied. Operation beyond the maximum operating conditions for extended periods may affect product reliability.

## THERMAL CHARACTERISTICS

The exposed paddle is the only ground connection for the chip. The exposed paddle must be soldered to the AGND plane of the user's circuit board. Soldering the exposed paddle to the user's board also increases the reliability of the solder joints and maximizes the thermal capability of the package.

Typical  $\theta_{JA}$  is specified for a 4-layer PCB with a solid ground plane. As shown in Table 7, airflow improves heat dissipation, which reduces  $\theta_{JA}$ . In addition, metal in direct contact with the package leads from metal traces, through holes, ground, and power planes, reduces the  $\theta_{JA}$ .

Table 7. Thermal Resistance

| Package Type             | Airflow Velocity (m/sec) | $\theta_{JA}^{1,2}$ | $\theta_{JC}^{1,3}$ | $\theta_{JB}^{1,4}$ | Unit |
|--------------------------|--------------------------|---------------------|---------------------|---------------------|------|
| 64-Lead LFCSP (CP-64-17) | 0                        | 23                  | 2.0                 |                     | °C/W |
|                          | 1.0                      | 20                  |                     | 12                  | °C/W |
|                          | 2.5                      | 18                  |                     |                     | °C/W |

<sup>1</sup> Per JEDEC 51-7, plus JEDEC 25-5 252P test board.

<sup>2</sup> Per JEDEC JESD51-2 (still air) or JEDEC JESD51-6 (moving air).

<sup>3</sup> Per MIL-Std 883, Method 1012.1.

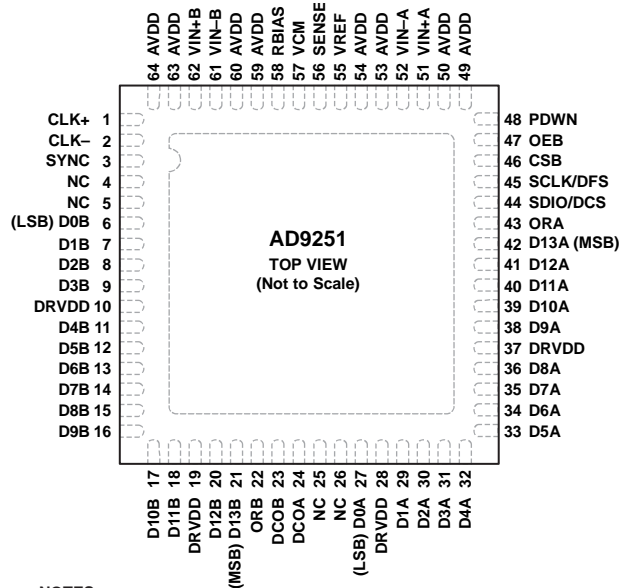
<sup>4</sup> Per JEDEC JESD51-8 (still air).

## ESD CAUTION



**ESD (electrostatic discharge) sensitive device.** Charged devices and circuit boards can discharge without detection. Although this product features patented or proprietary protection circuitry, damage may occur on devices subjected to high energy ESD. Therefore, proper ESD precautions should be taken to avoid performance degradation or loss of functionality.

# PIN CONFIGURATION AND FUNCTION DESCRIPTIONS



- NOTES  
 1. NC = NO CONNECT  
 2. THE EXPOSED PADDLE MUST BE SOLDERED TO THE PCB GROUND TO ENSURE PROPER HEAT DISSIPATION, NOISE, AND MECHANICAL STRENGTH BENEFITS.

079389-005

Figure 5. Pin Configuration

Table 8. Pin Function Description

| Pin No.                  | Mnemonic    | Description  |
|--------------------------|-------------|--|
| 0                        | GND         | Exposed paddle is the only ground connection for the chip. Must be connected to PCB AGND.  |
| 1, 2                     | CLK+, CLK-  | Differential Encode Clock. PECL, LVDS, or 1.8 V CMOS inputs.   |
| 3                        | SYNC        | Digital Input. SYNC input to clock divider. 30 kΩ internal pull-down.  |
| 4, 5, 25, 26             | NC          | Do Not Connect.  |
| 6 to 9, 11 to 18, 20, 21 | D0B to D13B | Channel B Digital Outputs. D13B = MSB.   |
| 10, 19, 28, 37           | DRVDD       | Digital Output Driver Supply (1.8 V to 3.3 V).   |
| 22                       | ORB         | Channel B Out-of-Range Digital Output.   |
| 23                       | DCOB        | Channel B Data Clock Digital Output.   |
| 24                       | DCOA        | Channel A Data Clock Digital Output.   |
| 27, 29 to 36, 38 to 42   | D0A to D13A | Channel A Digital Outputs. D13A = MSB.   |
| 43                       | ORA         | Channel A Out-of-Range Digital Output.   |
| 44                       | SDIO/DCS    | SPI Data Input/Output (SDIO). Bidirectional SPI Data I/O in SPI mode. 30 kΩ internal pull-down in SPI mode.<br>Duty Cycle Stabilizer (DCS). Static enable input for duty cycle stabilizer in non-SPI mode. 30 kΩ internal pull-up in non-SPI (DCS) mode. |
| 45                       | SCLK/DFS    | SPI Clock (SCLK) Input in SPI mode. 30 kΩ internal pull-down.<br>Data Format Select (DFS). Static control of data output format in non-SPI mode. 30 kΩ internal pull-down.<br>DFS high = twos complement output.<br>DFS low = offset binary output.      |
| 46                       | CSB         | SPI Chip Select. Active low enable; 30 kΩ internal pull-up.  |
| 47                       | OEB         | Digital Input. Enable Channel A and Channel B digital outputs if low, tristate outputs if high. 30 kΩ internal pull-down.  |

| Pin No.                        | Mnemonic     | Description  |
|--------------------------------|--------------|--|
| 48                             | PDWN         | Digital Input. 30 k $\Omega$ internal pull-down.<br>PDWN high = power-down device.<br>PDWN low = run device, normal operation. |
| 49, 50, 53, 54, 59, 60, 63, 64 | AVDD         | 1.8 V Analog Supply Pins.  |
| 51, 52                         | VIN+A, VIN-A | Channel A Analog Inputs.   |
| 55                             | VREF         | Voltage Reference Input/Output.  |
| 56                             | SENSE        | Reference Mode Selection.  |
| 57                             | VCM          | Analog output voltage at midsupply to set common mode of the analog inputs.  |
| 58                             | RBIAS        | Sets Analog Current Bias. Connect to 10 k $\Omega$ (1% tolerance) resistor to ground.  |
| 61, 62                         | VIN-B, VIN+B | Channel B Analog Inputs.   |

# TYPICAL PERFORMANCE CHARACTERISTICS

## AD9251-80

AVDD = 1.8 V; DRVDD = 1.8 V, maximum sample rate, 2 V p-p differential input, 1.0 V internal reference; AIN = -1.0 dBFS, DCS disabled, unless otherwise noted.

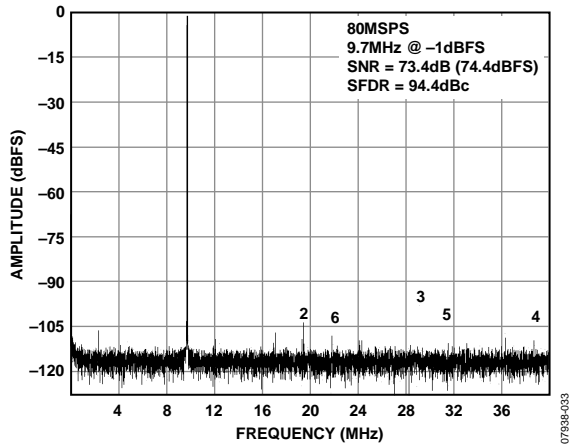


Figure 6. Single-Tone FFT with  $f_{IN} = 9.7$  MHz

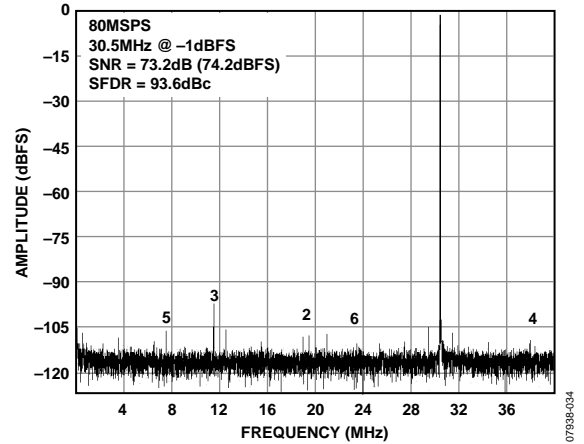


Figure 9. Single-Tone FFT with  $f_{IN} = 30.5$  MHz

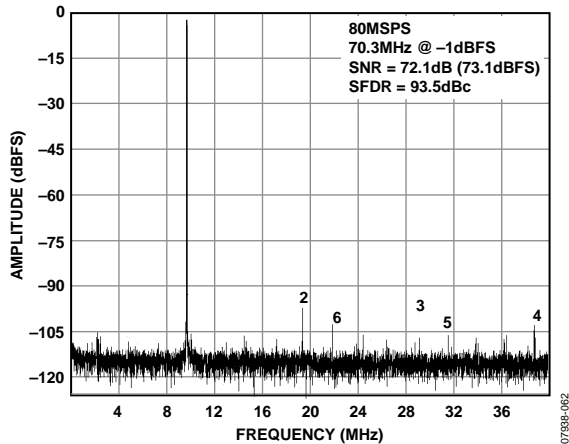


Figure 7. Single-Tone FFT with  $f_{IN} = 70.3$  MHz

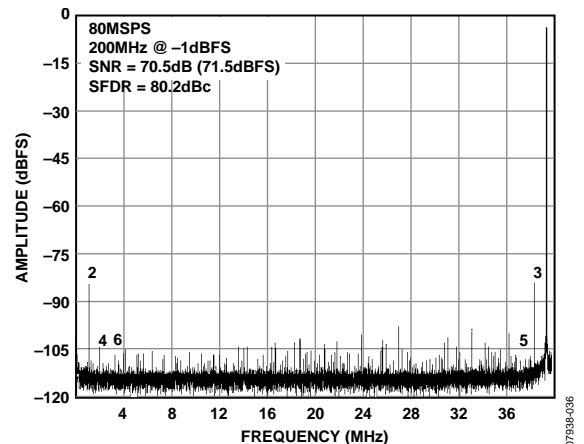


Figure 10. Single-Tone FFT with  $f_{IN} = 200$  MHz

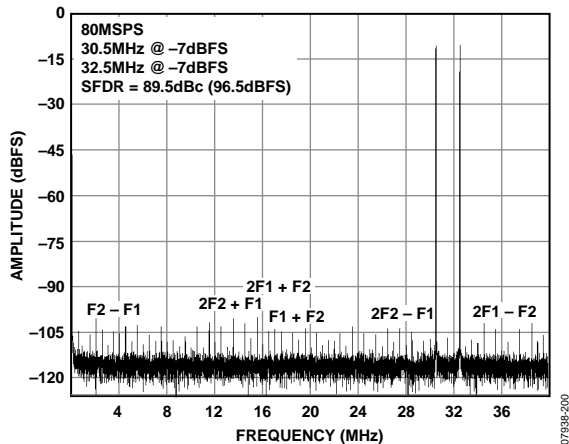


Figure 8. Two-Tone FFT with  $f_{IN1} = 30.5$  MHz and  $f_{IN2} = 32.5$  MHz

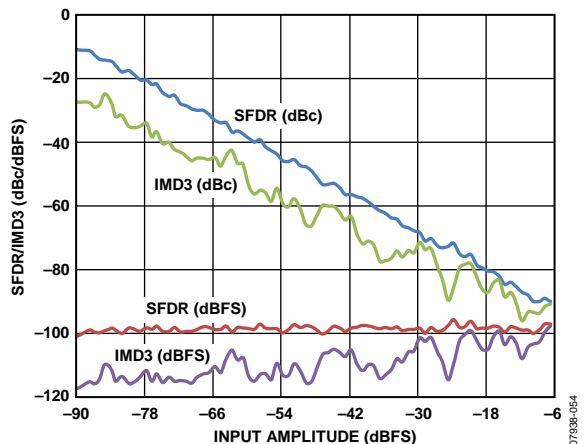


Figure 11. Two-Tone SFDR/IMD3 vs. Input Amplitude (AIN) with  $f_{IN1} = 30.5$  MHz and  $f_{IN2} = 32.5$  MHz

AVDD = 1.8 V; DRVDD = 1.8 V, maximum sample rate, 2 V p-p differential input, 1.0 V internal reference; AIN = -1.0 dBFS, DCS disabled, unless otherwise noted.

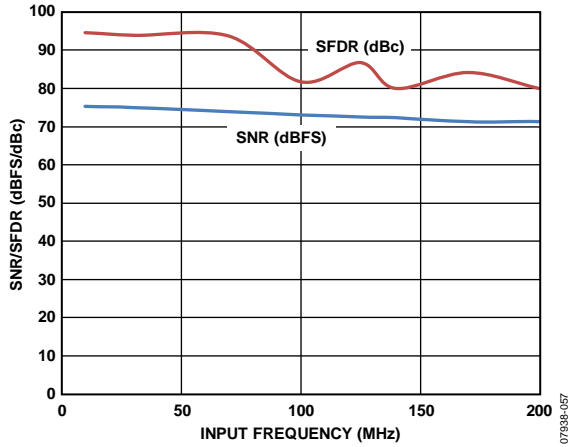


Figure 12. SNR/SFDR vs. Input Frequency (AIN) with 2 V p-p Full Scale

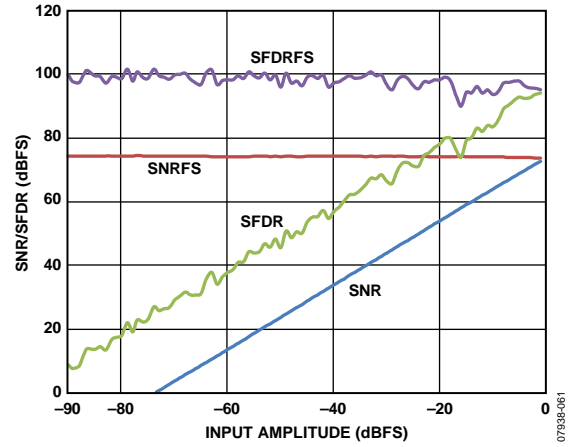


Figure 15. SNR/SFDR vs. Input Amplitude (AIN) with  $f_{IN} = 9.7$  MHz

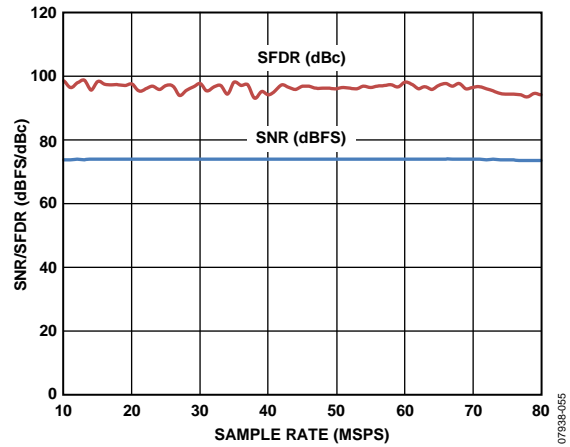


Figure 13. SNR/SFDR vs. Sample Rate with AIN = 9.7 MHz

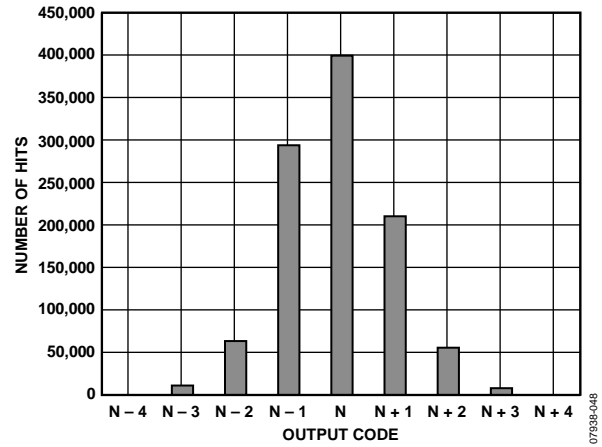


Figure 16. Grounded Input Histogram

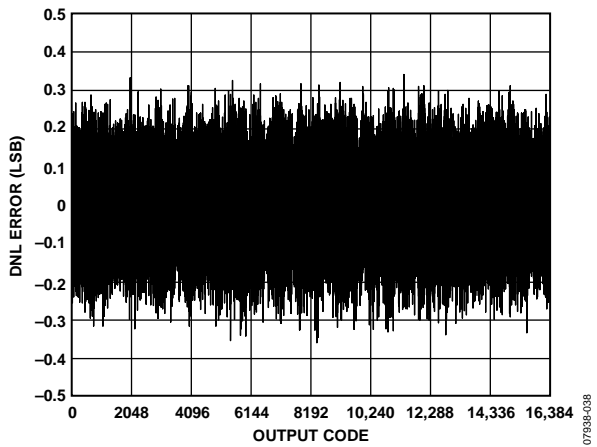


Figure 14. DNL Error with  $f_{IN} = 9.7$  MHz

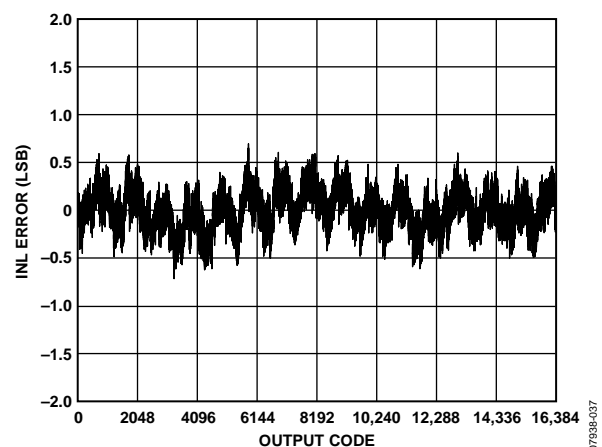


Figure 17. INL with  $f_{IN} = 9.7$  MHz

**AD9251-65**

AVDD = 1.8 V; DRVDD = 1.8 V, maximum sample rate, 2 V p-p differential input, 1.0 V internal reference; AIN = -1.0 dBFS, DCS disabled, unless otherwise noted.

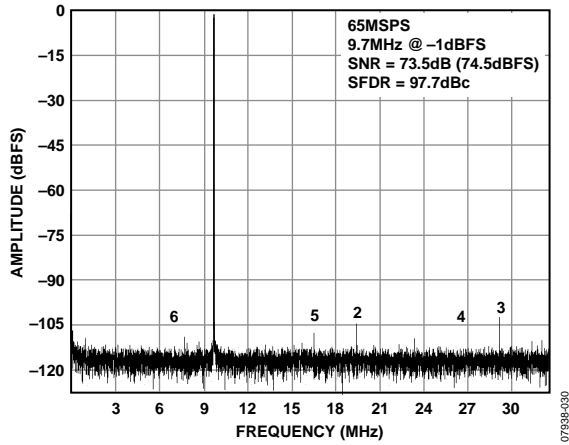


Figure 18. Single-Tone FFT with  $f_{IN} = 9.7$  MHz

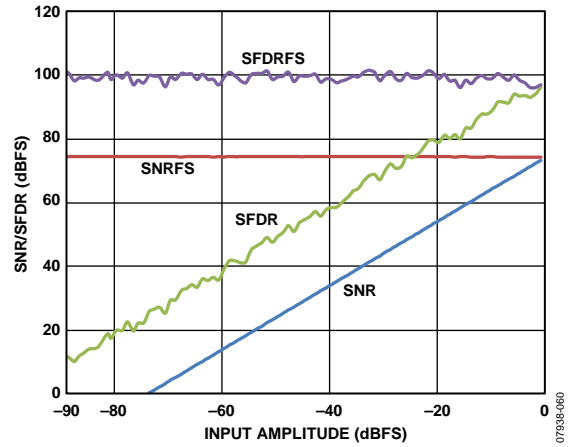


Figure 21. SNR/SFDR vs. Input Amplitude (AIN) with  $f_{IN} = 9.7$  MHz

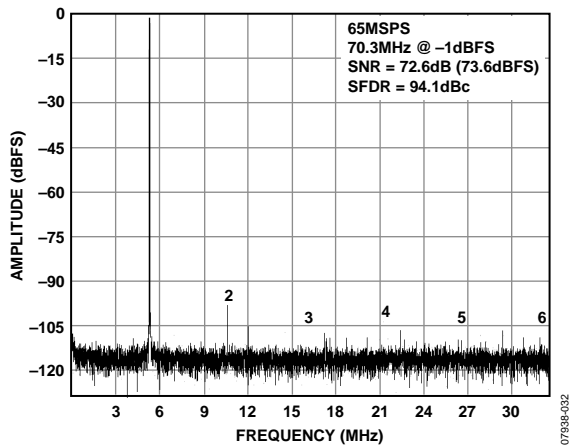


Figure 19. Single-Tone FFT with  $f_{IN} = 70.3$  MHz

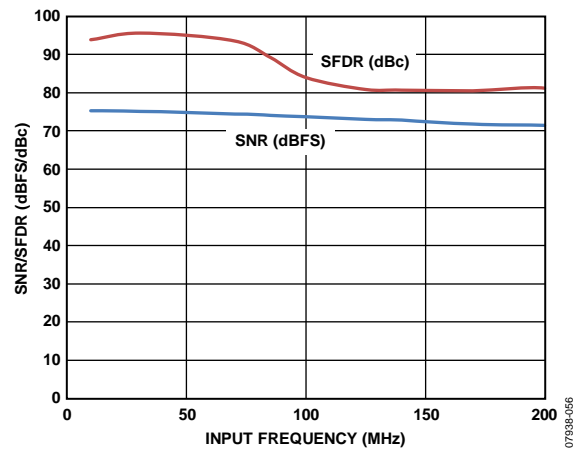


Figure 22. SNR/SFDR vs. Input Frequency (AIN) with 2 V p-p Full Scale

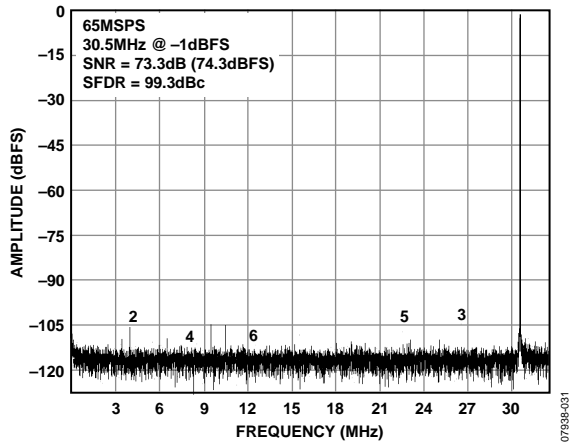


Figure 20. Single-Tone FFT with  $f_{IN} = 30.5$  MHz

07938-030

07938-032

07938-031

07938-060

07938-056

AD9251-40

AVDD = 1.8 V; DRVDD = 1.8 V, maximum sample rate, 2 V p-p differential input, 1.0 V internal reference; AIN = -1.0 dBFS, DCS disabled, unless otherwise noted.

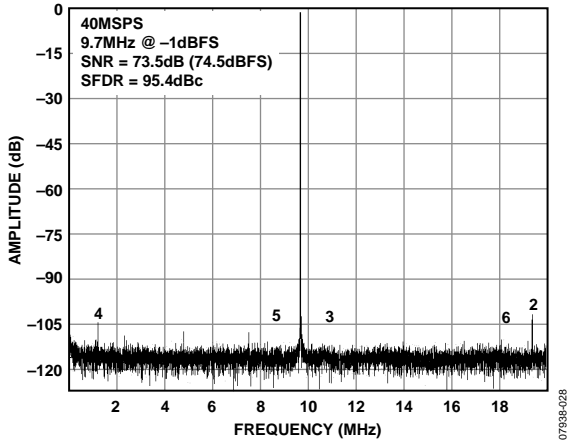


Figure 23. Single-Tone FFT with  $f_{IN} = 9.7$  MHz

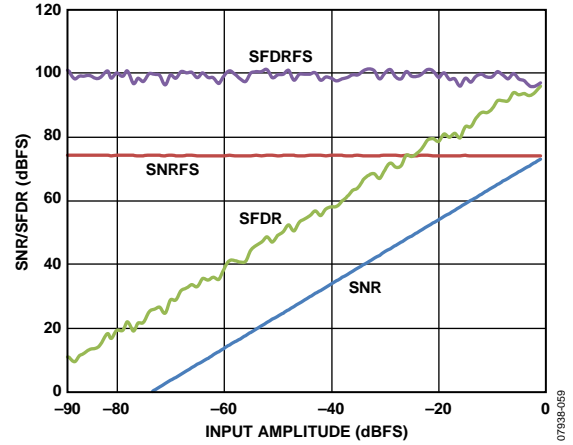


Figure 25. SNR/SFDR vs. Input Amplitude (AIN) with  $f_{IN} = 9.7$  MHz

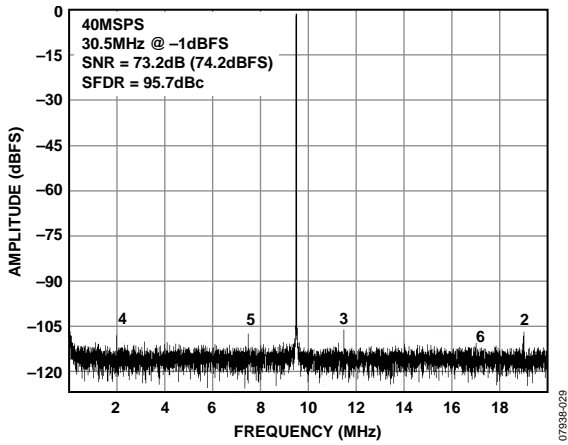


Figure 24. Single-Tone FFT with  $f_{IN} = 30.5$  MHz

**AD9251-20**

AVDD = 1.8 V; DRVDD = 1.8 V, maximum sample rate, 2 V p-p differential input, 1.0 V internal reference; AIN = -1.0 dBFS, DCS disabled, unless otherwise noted.

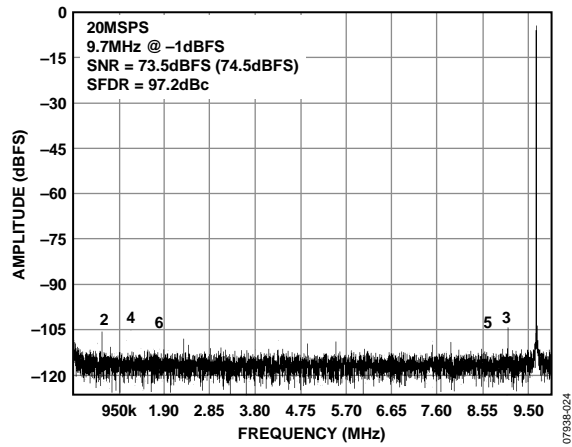


Figure 26. Single-Tone FFT with  $f_{IN} = 9.7$  MHz

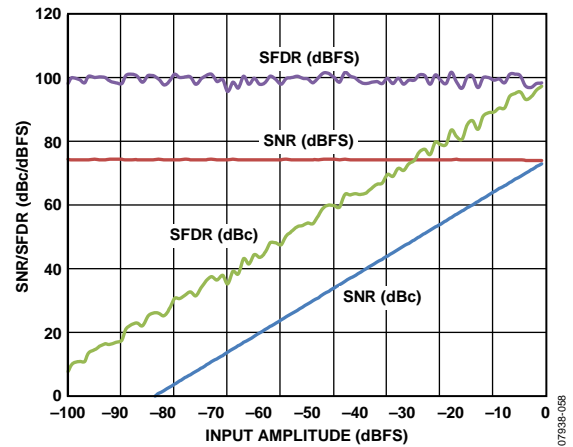


Figure 28. SNR/SFDR vs. Input Amplitude (AIN) with  $f_{IN} = 9.7$  MHz

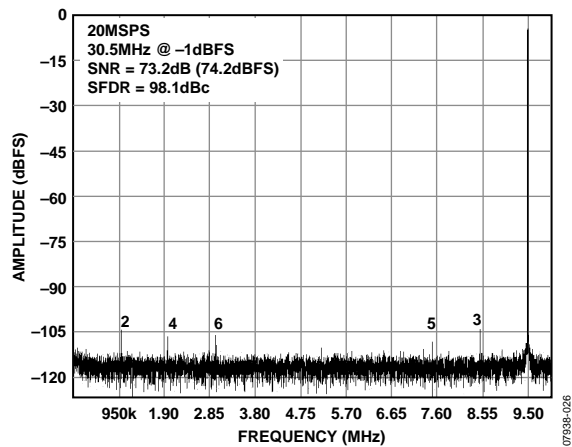


Figure 27. Single-Tone FFT with  $f_{IN} = 30.5$  MHz

# EQUIVALENT CIRCUITS

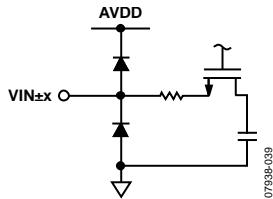


Figure 29. Equivalent Analog Input Circuit

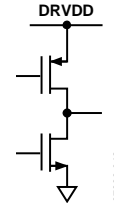


Figure 32. Equivalent Digital Output Circuit

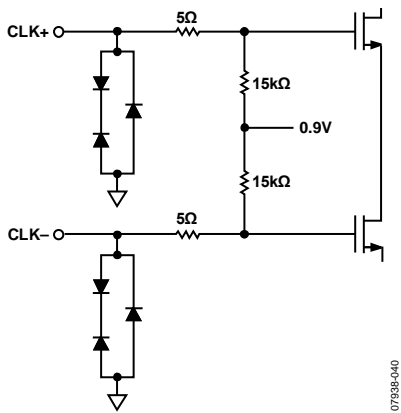


Figure 30. Equivalent Clock Input Circuit

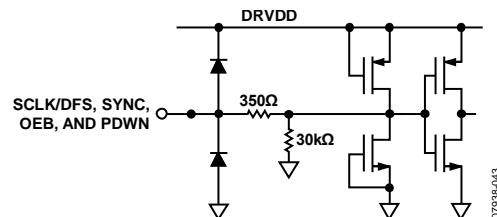


Figure 33. Equivalent SCLK/DFS, SYNC, OEB, and PDWN Input Circuit

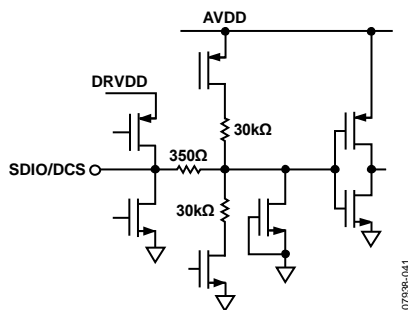


Figure 31. Equivalent SDIO/DCS Input Circuit

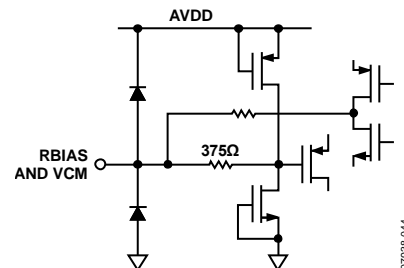


Figure 34. Equivalent RBIAS, VCM Circuit

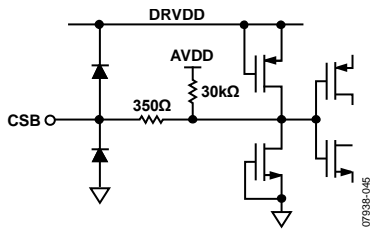


Figure 35. Equivalent CSB Input Circuit

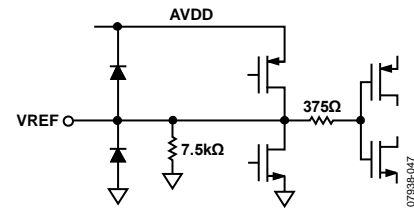


Figure 37. Equivalent VREF Circuit

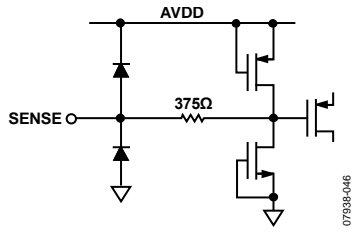


Figure 36. Equivalent SENSE Circuit

## THEORY OF OPERATION

The AD9251 dual ADC design can be used for diversity reception of signals, where the ADCs are operating identically on the same carrier but from two separate antennae. The ADCs can also be operated with independent analog inputs. The user can sample any  $f_s/2$  frequency segment from dc to 200 MHz, using appropriate low-pass or band-pass filtering at the ADC inputs with little loss in ADC performance. Operation to 300 MHz analog input is permitted but occurs at the expense of increased ADC noise and distortion.

In nondiversity applications, the AD9251 can be used as a base-band or direct downconversion receiver, where one ADC is used for I input data and the other is used for Q input data.

Synchronization capability is provided to allow synchronized timing between multiple channels or multiple devices.

Programming and control of the AD9251 is accomplished using a 3-bit SPI-compatible serial interface.

### ADC ARCHITECTURE

The AD9251 architecture consists of a multistage, pipelined ADC. Each stage provides sufficient overlap to correct for flash errors in the preceding stage. The quantized outputs from each stage are combined into a final 14-bit result in the digital correction logic. The pipelined architecture permits the first stage to operate with a new input sample while the remaining stages operate with preceding samples. Sampling occurs on the rising edge of the clock.

Each stage of the pipeline, excluding the last, consists of a low resolution flash ADC connected to a switched-capacitor DAC and an interstage residue amplifier (for example, a multiplying digital-to-analog converter (MDAC)). The residue amplifier magnifies the difference between the reconstructed DAC output and the flash input for the next stage in the pipeline. One bit of redundancy is used in each stage to facilitate digital correction of flash errors. The last stage simply consists of a flash ADC.

The output staging block aligns the data, corrects errors, and passes the data to the CMOS output buffers. The output buffers are powered from a separate (DRVDD) supply, allowing adjustment of the output voltage swing. During power-down, the output buffers go into a high impedance state.

### ANALOG INPUT CONSIDERATIONS

The analog input to the AD9251 is a differential switched-capacitor circuit designed for processing differential input signals. This circuit can support a wide common-mode range while maintaining excellent performance. By using an input common-mode voltage of midsupply, users can minimize signal-dependent errors and achieve optimum performance.

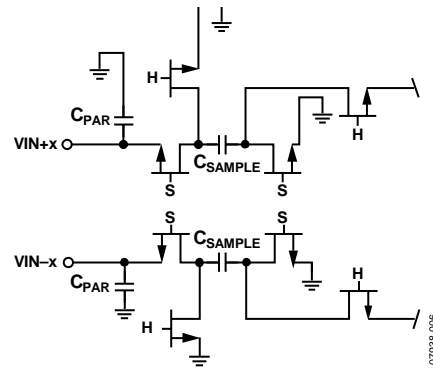


Figure 38. Switched-Capacitor Input Circuit

The clock signal alternately switches the input circuit between sample-and-hold mode (see Figure 38). When the input circuit is switched to sample mode, the signal source must be capable of charging the sample capacitors and settling within one-half of a clock cycle. A small resistor in series with each input can help reduce the peak transient current injected from the output stage of the driving source. In addition, low Q inductors or ferrite beads can be placed on each leg of the input to reduce high differential capacitance at the analog inputs and, therefore, achieve the maximum bandwidth of the ADC. Such use of low Q inductors or ferrite beads is required when driving the converter front end at high IF frequencies. Either a shunt capacitor or two single-ended capacitors can be placed on the inputs to provide a matching passive network. This ultimately creates a low-pass filter at the input to limit unwanted broadband noise. See the [AN-742](#) Application Note, the [AN-827](#) Application Note, and the *Analog Dialogue* article “[Transformer-Coupled Front-End for Wideband A/D Converters](#)” (Volume 39, April 2005) for more information. In general, the precise values depend on the application.

**Input Common Mode**

The analog inputs of the AD9251 are not internally dc-biased. Therefore, in ac-coupled applications, the user must provide a dc bias externally. Setting the device so that  $V_{CM} = AV_{DD}/2$  is recommended for optimum performance, but the device can function over a wider range with reasonable performance, as shown in Figure 39 and Figure 40.

An on-board, common-mode voltage reference is included in the design and is available from the VCM pin. The VCM pin must be decoupled to ground by a 0.1  $\mu\text{F}$  capacitor, as described in the Applications Information section.

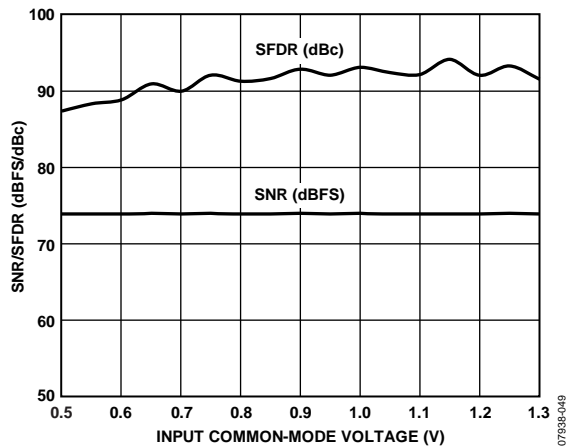


Figure 39. SNR/SFDR vs. Input Common-Mode Voltage,  $f_{IN} = 32.1 \text{ MHz}$ ,  $f_s = 80 \text{ MSPS}$

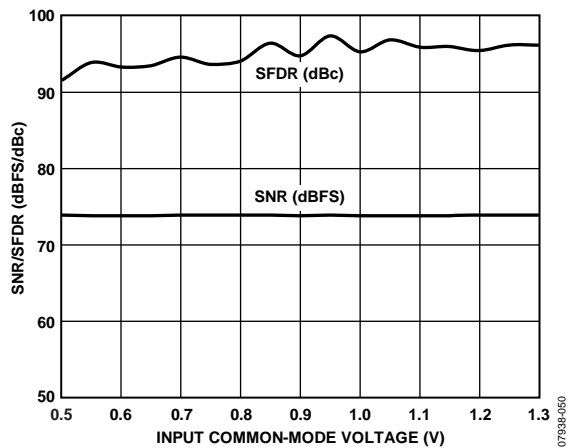


Figure 40. SNR/SFDR vs. Input Common-Mode Voltage,  $f_{IN} = 10.3 \text{ MHz}$ ,  $f_s = 20 \text{ MSPS}$

**Differential Input Configurations**

Optimum performance is achieved while driving the AD9251 in a differential input configuration. For baseband applications, the AD8138, ADA4937-2, and ADA4938-2 differential drivers provide excellent performance and a flexible interface to the ADC.

The output common-mode voltage of the ADA4938-2 is easily set with the VCM pin of the AD9251 (see Figure 41), and the driver can be configured in a Sallen-Key filter topology to provide band limiting of the input signal.

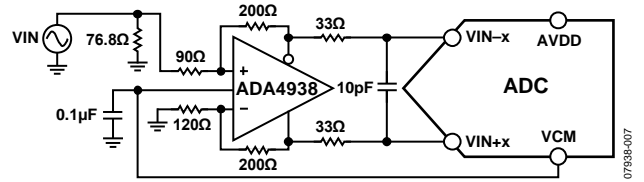


Figure 41. Differential Input Configuration Using the ADA4938-2

For baseband applications below  $\sim 10 \text{ MHz}$  where SNR is a key parameter, differential transformer-coupling is the recommended input configuration. An example is shown in Figure 42. To bias the analog input, the VCM voltage can be connected to the center tap of the secondary winding of the transformer.

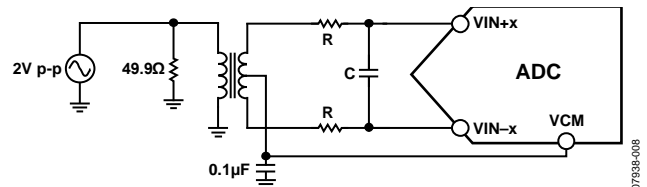


Figure 42. Differential Transformer-Coupled Configuration

The signal characteristics must be considered when selecting a transformer. Most RF transformers saturate at frequencies below a few megahertz (MHz). Excessive signal power can also cause core saturation, which leads to distortion.

At input frequencies in the second Nyquist zone and above, the noise performance of most amplifiers is not adequate to achieve the true SNR performance of the AD9251. For applications above  $\sim 10 \text{ MHz}$  where SNR is a key parameter, differential double balun coupling is the recommended input configuration (see Figure 44).

An alternative to using a transformer-coupled input at frequencies in the second Nyquist zone is to use the AD8352 differential driver. An example is shown in Figure 45. See the AD8352 data sheet for more information.

In any configuration, the value of Shunt Capacitor C is dependent on the input frequency and source impedance and may need to be reduced or removed. Table 9 displays the suggested values to set the RC network. However, these values are dependent on the input signal and should be used only as a starting guide.

Table 9. Example RC Network

| Frequency Range (MHz) | R Series ( $\Omega$ Each) | C Differential (pF) |
|-----------------------|---------------------------|---------------------|
| 0 to 70               | 33                        | 22                  |
| 70 to 200             | 125                       | Open                |

**Single-Ended Input Configuration**

A single-ended input can provide adequate performance in cost-sensitive applications. In this configuration, SFDR and distortion performance degrade due to the large input common-mode swing. If the source impedances on each input are matched, there should be little effect on SNR performance. Figure 43 shows a typical single-ended input configuration.

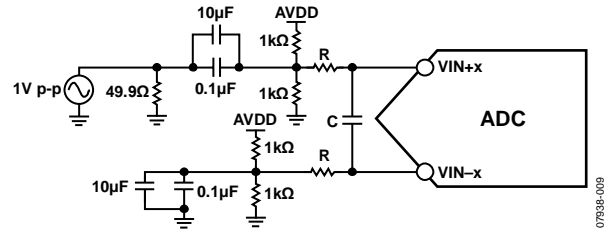


Figure 43. Single-Ended Input Configuration

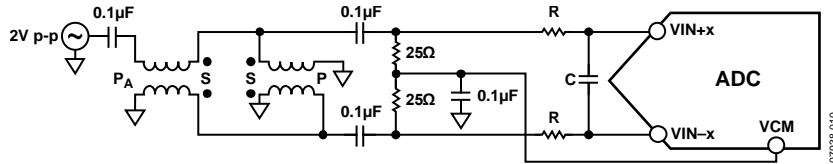


Figure 44. Differential Double Balun Input Configuration

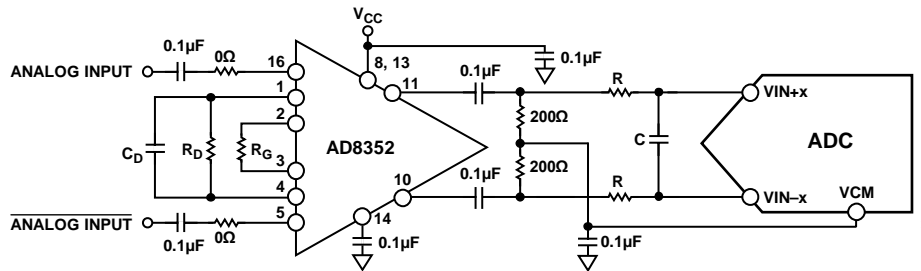


Figure 45. Differential Input Configuration Using the AD8352

**VOLTAGE REFERENCE**

A stable and accurate 1.0 V voltage reference is built into the AD9251. The VREF can be configured using either the internal 1.0 V reference or an externally applied 1.0 V reference voltage. The various reference modes are summarized in the sections that follow. The Reference Decoupling section describes the best practices PCB layout of the reference.

**Internal Reference Connection**

A comparator within the AD9251 detects the potential at the SENSE pin and configures the reference into two possible modes, which are summarized in Table 10. If SENSE is grounded, the reference amplifier switch is connected to the internal resistor divider (see Figure 46), setting VREF to 1.0 V.

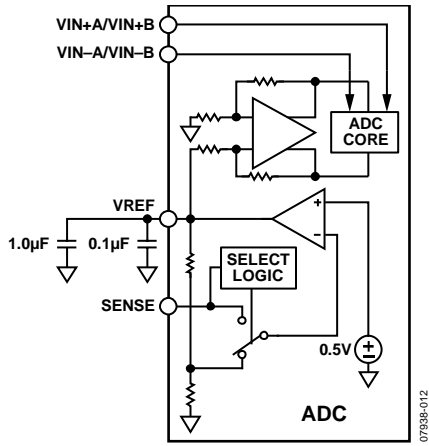


Figure 46. Internal Reference Configuration

If the internal reference of the AD9251 is used to drive multiple converters to improve gain matching, the loading of the reference by the other converters must be considered. Figure 47 shows how the internal reference voltage is affected by loading.

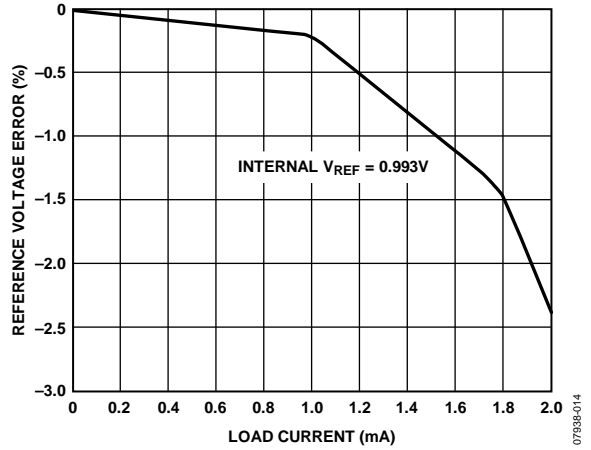


Figure 47. VREF Accuracy vs. Load Current

**Table 10. Reference Configuration Summary**

| Selected Mode            | SENSE Voltage (V) | Resulting VREF (V)               | Resulting Differential Span (V p-p) |
|--------------------------|-------------------|----------------------------------|-------------------------------------|
| Fixed Internal Reference | AGND to 0.2       | 1.0 internal                     | 2.0                                 |
| Fixed External Reference | AVDD              | 1.0 applied to external VREF pin | 2.0                                 |

**External Reference Operation**

The use of an external reference may be necessary to enhance the gain accuracy of the ADC or improve thermal drift characteristics. Figure 48 shows the typical drift characteristics of the internal reference in 1.0 V mode.

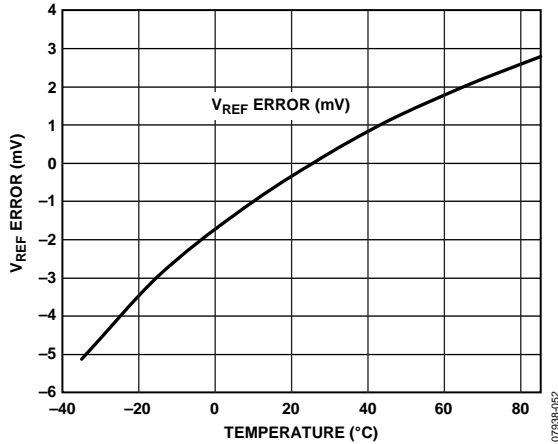


Figure 48. Typical  $V_{REF}$  Drift

When the SENSE pin is tied to AVDD, the internal reference is disabled, allowing the use of an external reference. An internal reference buffer loads the external reference with an equivalent 7.5 kΩ load (see Figure 37). The internal buffer generates the positive and negative full-scale references for the ADC core. Therefore, the external reference must be limited to a maximum of 1.0 V.

**CLOCK INPUT CONSIDERATIONS**

For optimum performance, clock the AD9251 sample clock inputs, CLK+ and CLK-, with a differential signal. The signal is typically ac-coupled into the CLK+ and CLK- pins via a transformer or capacitors. These pins are biased internally (see Figure 49) and require no external bias.

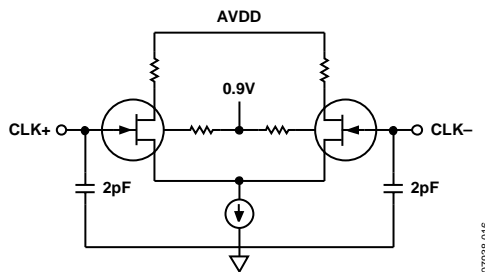


Figure 49. Equivalent Clock Input Circuit

**Clock Input Options**

The AD9251 has a very flexible clock input structure. The clock input can be a CMOS, LVDS, LVPECL, or sine wave signal. Regardless of the type of signal being used, clock source jitter is of the most concern, as described in the Jitter Considerations section.

Figure 50 and Figure 51 show two preferred methods for clocking the AD9251 (at clock rates up to 625 MHz). A low jitter clock source is converted from a single-ended signal to a differential signal using either an RF transformer or an RF balun.

The RF balun configuration is recommended for clock frequencies between 125 MHz and 625 MHz, and the RF transformer is recommended for clock frequencies from 10 MHz to 200 MHz. The back-to-back Schottky diodes across the transformer/balun secondary limit clock excursions into the AD9251 to approximately 0.8 V p-p differential.

This limit helps prevent the large voltage swings of the clock from feeding through to other portions of the AD9251 while preserving the fast rise and fall times of the signal that are critical to a low jitter performance.

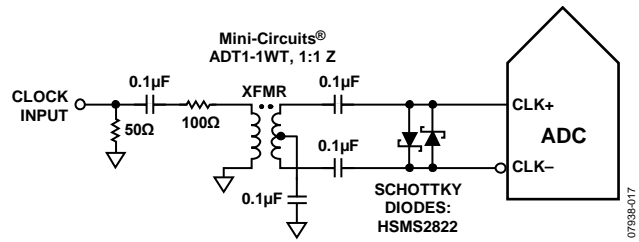


Figure 50. Transformer-Coupled Differential Clock (Up to 200 MHz)



Figure 51. Balun-Coupled Differential Clock (Up to 625 MHz)

If a low jitter clock source is not available, another option is to ac couple a differential PECL signal to the sample clock input pins, as shown in Figure 52. The AD9510/AD9511/AD9512/AD9513/AD9514/AD9515/AD9516/AD9517 clock drivers offer excellent jitter performance.

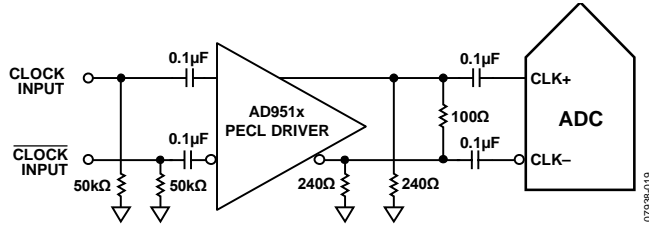


Figure 52. Differential PECL Sample Clock (Up to 625 MHz)

A third option is to ac couple a differential LVDS signal to the sample clock input pins, as shown in Figure 53. The AD9510/AD9511/AD9512/AD9513/AD9514/AD9515/AD9516/AD9517 clock drivers offer excellent jitter performance.

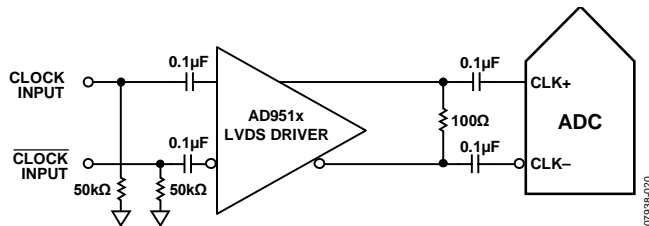
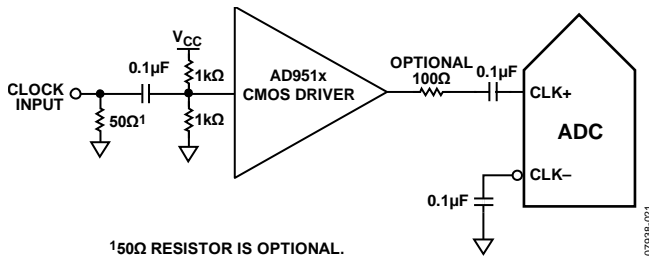


Figure 53. Differential LVDS Sample Clock (Up to 625 MHz)

In some applications, it may be acceptable to drive the sample clock inputs with a single-ended 1.8 V CMOS signal. In such applications, drive the CLK+ pin directly from a CMOS gate, and bypass the CLK- pin to ground with a 0.1 μF capacitor (see Figure 54).



150Ω RESISTOR IS OPTIONAL.

Figure 54. Single-Ended 1.8 V CMOS Input Clock (Up to 200 MHz)

### Input Clock Divider

The AD9251 contains an input clock divider with the ability to divide the input clock by integer values between 1 and 8. Optimum performance is obtained by enabling the internal duty cycle stabilizer (DCS) when using divide ratios other than 1, 2, or 4.

The AD9251 clock divider can be synchronized using the external SYNC input. Bit 1 and Bit 2 of Register 0x100 allow the clock divider to be resynchronized on every SYNC signal or only on the first SYNC signal after the register is written. A valid SYNC causes the clock divider to reset to its initial state. This synchronization feature allows multiple parts to have their clock dividers aligned to guarantee simultaneous input sampling.

### Clock Duty Cycle

Typical high speed ADCs use both clock edges to generate a variety of internal timing signals and, as a result, may be sensitive to clock duty cycle. Commonly, a ±5% tolerance is required on the clock duty cycle to maintain dynamic performance characteristics.

The AD9251 contains a duty cycle stabilizer (DCS) that retimes the nonsampling (falling) edge, providing an internal clock signal with a nominal 50% duty cycle. This allows the user to provide a wide range of clock input duty cycles without affecting the performance of the AD9251. Noise and distortion performance are nearly flat for a wide range of duty cycles with the DCS on, as shown in Figure 55.

Jitter in the rising edge of the input is still of concern and is not easily reduced by the internal stabilization circuit. The duty cycle control loop does not function for clock rates less than 20 MHz, nominally. The loop has a time constant associated with it that must be considered in applications in which the clock rate can change dynamically. A wait time of 1.5 μs to 5 μs is required after a dynamic clock frequency increase or decrease before the DCS loop is relocked to the input signal.

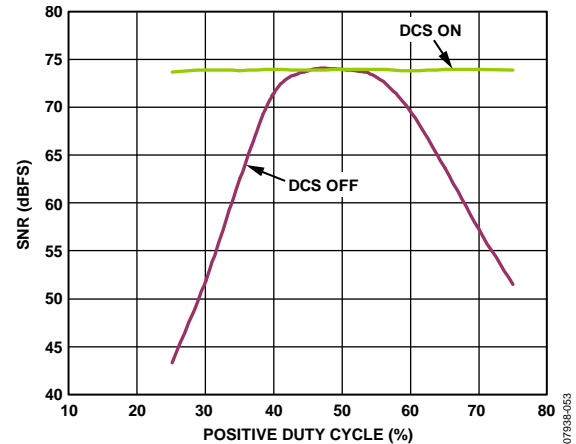


Figure 55. SNR vs. DCS On/Off

### Jitter Considerations

High speed, high resolution ADCs are sensitive to the quality of the clock input. The degradation in SNR from the low frequency SNR ( $SNR_{LF}$ ) at a given input frequency ( $f_{INPUT}$ ) due to jitter ( $t_{JMS}$ ) can be calculated by

$$SNR_{HF} = -10 \log[(2\pi \times f_{INPUT} \times t_{JMS})^2 + 10^{(-SNR_{LF}/10)}]$$

In the previous equation, the rms aperture jitter represents the clock input jitter specification. In undersampling applications are particularly sensitive to jitter, as illustrated in Figure 56.

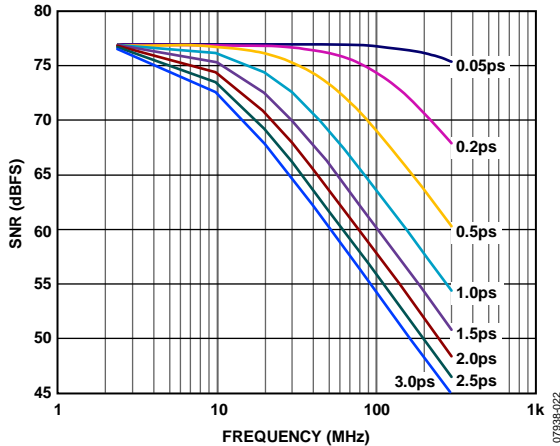


Figure 56. SNR vs. Input Frequency and Jitter

The clock input should be treated as an analog signal in cases where aperture jitter may affect the dynamic range of the AD9251. To avoid modulating the clock signal with digital noise, keep power supplies for clock drivers separate from the ADC output driver supplies. Low jitter, crystal-controlled oscillators make the best clock sources. If the clock is generated from another type of source (by gating, dividing, or another method), it should be retimed by the original clock at the last step.

See the [AN-501](#) Application Note and the [AN-756](#) Application Note available on [www.analog.com](http://www.analog.com) for more information.

### CHANNEL/CHIP SYNCHRONIZATION

The AD9251 has a SYNC input that offers the user flexible synchronization options for synchronizing sample clocks across multiple ADCs. The input clock divider can be enabled to synchronize on a single occurrence of the SYNC signal or on every occurrence. The SYNC input is internally synchronized to the sample clock; however, to ensure there is no timing uncertainty between multiple parts, the SYNC input signal should be externally synchronized to the input clock signal, meeting the setup and hold times shown in Table 5. Drive the SYNC input using a single-ended CMOS-type signal.

### POWER DISSIPATION AND STANDBY MODE

As shown in Figure 57, the analog core power dissipated by the AD9251 is proportional to its sample rate. The digital power dissipation of the CMOS outputs are determined

primarily by the strength of the digital drivers and the load on each output bit.

The maximum DRVDD current ( $IDRVDD$ ) can be calculated as

$$IDRVDD = V_{DRVDD} \times C_{LOAD} \times f_{CLK} \times N$$

where  $N$  is the number of output bits (30, in the case of the AD9251).

This maximum current occurs when every output bit switches on every clock cycle, that is, a full-scale square wave at the Nyquist frequency of  $f_{CLK}/2$ . In practice, the DRVDD current is established by the average number of output bits switching, which is determined by the sample rate and the characteristics of the analog input signal.

Reducing the capacitive load presented to the output drivers can minimize digital power consumption. The data in Figure 57 was taken using the same operating conditions as those used for the Typical Performance Characteristics, with a 5 pF load on each output driver.

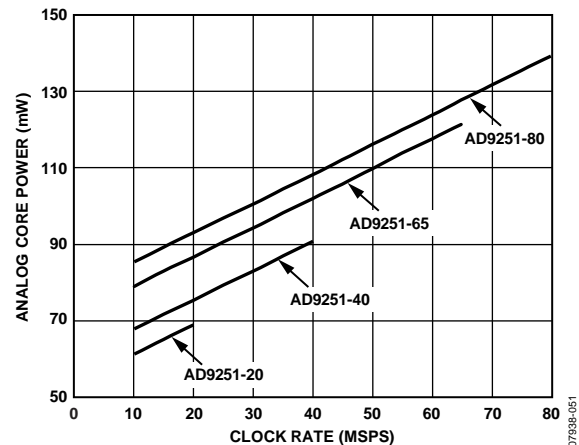


Figure 57. Analog Core Power vs. Clock Rate

The AD9251 is placed in power-down mode either by the SPI port or by asserting the PDWN pin high. In this state, the ADC typically dissipates 2.2 mW. During power-down, the output drivers are placed in a high impedance state. Asserting the PDWN pin low returns the AD9251 to its normal operating mode. Note that PDWN is referenced to the digital output driver supply (DRVDD) and should not exceed that supply voltage.

Low power dissipation in power-down mode is achieved by shutting down the reference, reference buffer, biasing networks, and clock. Internal capacitors are discharged when entering power-down mode and then must be recharged when returning to normal operation. As a result, wake-up time is related to the time spent in power-down mode, and shorter power-down cycles result in proportionally shorter wake-up times.

When using the SPI port interface, the user can place the ADC in power-down mode or standby mode. Standby mode allows the user to keep the internal reference circuitry powered when

faster wake-up times are required. See the Memory Map section for more details.

## DIGITAL OUTPUTS

The AD9251 output drivers can be configured to interface with 1.8 V to 3.3 V CMOS logic families. Output data can also be multiplexed onto a single output bus to reduce the total number of traces required.

The CMOS output drivers are sized to provide sufficient output current to drive a wide variety of logic families. However, large drive currents tend to cause current glitches on the supplies and may affect converter performance.

Applications requiring the ADC to drive large capacitive loads or large fanouts may require external buffers or latches.

The output data format can be selected to be either offset binary or twos complement by setting the SCLK/DFS pin when operating in the external pin mode (see Table 11).

As detailed in the [AN-877](#) Application Note, *Interfacing to High Speed ADCs via SPI*, the data format can be selected for offset binary, twos complement, or gray code when using the SPI control.

**Table 11. SCLK/DFS Mode Selection (External Pin Mode)**

| Voltage at Pin | SCLK/DFS                | SDIO/DCS              |
|----------------|-------------------------|-----------------------|
| AGND           | Offset binary (default) | DCS disabled          |
| DRVDD          | Twos complement         | DCS enabled (default) |

### Digital Output Enable Function (OEB)

The AD9251 has a flexible three-state ability for the digital output pins. The three-state mode is enabled using the OEB pin

or through the SPI interface. If the OEB pin is low, the output data drivers and DCOs are enabled. If the OEB pin is high, the output data drivers and DCOs are placed in a high impedance state. This OEB function is not intended for rapid access to the data bus. Note that OEB is referenced to the digital output driver supply (DRVDD) and should not exceed that supply voltage.

When using the SPI interface, the data outputs and DCO of each channel can be independently three-stated by using the output disable (OEB) bit (Bit 4) in Register 0x14.

## TIMING

The AD9251 provides latched data with a pipeline delay of 9 clock cycles. Data outputs are available one propagation delay ( $t_{PD}$ ) after the rising edge of the clock signal.

Minimize the length of the output data lines and loads placed on them to reduce transients within the AD9251. These transients can degrade converter dynamic performance.

The lowest typical conversion rate of the AD9251 is 3 MSPS. At clock rates below 3 MSPS, dynamic performance can degrade.

### Data Clock Output (DCO)

The AD9251 provides two data clock output (DCO) signals intended for capturing the data in an external register. The CMOS data outputs are valid on the rising edge of the DCO, unless the DCO clock polarity has been changed via the SPI. See Figure 2 and Figure 3 for a graphical timing description.

**Table 12. Output Data Format**

| Input (V)   | Condition (V)     | Offset Binary Output Mode | Twos Complement Mode | OR |
|-------------|-------------------|---------------------------|----------------------|----|
| VIN+ – VIN– | < –VREF – 0.5 LSB | 00 0000 0000 0000         | 10 0000 0000 0000    | 1  |
| VIN+ – VIN– | = –VREF           | 00 0000 0000 0000         | 10 0000 0000 0000    | 0  |
| VIN+ – VIN– | = 0               | 10 0000 0000 0000         | 00 0000 0000 0000    | 0  |
| VIN+ – VIN– | = +VREF – 1.0 LSB | 11 1111 1111 1111         | 01 1111 1111 1111    | 0  |
| VIN+ – VIN– | > +VREF – 0.5 LSB | 11 1111 1111 1111         | 01 1111 1111 1111    | 1  |

## BUILT-IN SELF-TEST (BIST) AND OUTPUT TEST

The AD9251 includes a built-in test feature designed to enable verification of the integrity of each channel, as well as to facilitate board level debugging. A built-in self-test (BIST) feature that verifies the integrity of the digital datapath of the AD9251 is included. Various output test options are also provided to place predictable values on the outputs of the AD9251.

### BUILT-IN SELF-TEST (BIST)

The BIST is a thorough test of the digital portion of the selected AD9251 signal path. Perform the BIST test after a reset to ensure the part is in a known state. During BIST, data from an internal pseudorandom noise (PN) source is driven through the digital datapath of both channels, starting at the ADC block output. At the datapath output, CRC logic calculates a signature from the data. The BIST sequence runs for 512 cycles and then stops. Once completed, the BIST compares the signature results with a pre-determined value. If the signatures match, the BIST sets Bit 0 of Register 0x24, signifying the test passed. If the BIST test fails, Bit 0 of Register 0x24 is cleared. The outputs are connected during this test, so the PN sequence can be observed as it runs. Writing the value 0x05 to Register 0x0E runs the BIST. This enables the Bit 0 (BIST enable) of Register 0x0E and resets the PN sequence

generator, Bit 2 (BIST INIT) of Register 0x0E. At the completion of the BIST, Bit 0 of Register 0x24 is automatically cleared. The PN sequence can be continued from its last value by writing a 0 in Bit 2 of Register 0x0E. However, if the PN sequence is not reset, the signature calculation does not equal the predetermined value at the end of the test. At that point, the user needs to rely on verifying the output data.

### OUTPUT TEST MODES

The output test options are described in Table 16 at Address 0x0D. When an output test mode is enabled, the analog section of the ADC is disconnected from the digital back-end blocks and the test pattern is run through the output formatting block. Some of the test patterns are subject to output formatting, and some are not. The PN generators from the PN sequence tests can be reset by setting Bit 4 or Bit 5 of Register 0x0D. These tests can be performed with or without an analog signal (if present, the analog signal is ignored), but they do require an encode clock. For more information, see the [AN-877](#) Application Note, *Interfacing to High Speed ADCs via SPI*.

## SERIAL PORT INTERFACE (SPI)

The AD9251 serial port interface (SPI) allows the user to configure the converter for specific functions or operations through a structured register space provided inside the ADC. The SPI gives the user added flexibility and customization, depending on the application. Addresses are accessed via the serial port and can be written to or read from via the port. Memory is organized into bytes that can be further divided into fields, which are documented in the Memory Map section. For detailed operational information, see [AN-877](#) Application Note, *Interfacing to High Speed ADCs via SPI*.

### CONFIGURATION USING THE SPI

Three pins define the SPI of this ADC: the SCLK, the SDIO, and the CSB (see Table 13). The SCLK (a serial clock) is used to synchronize the read and write data presented from and to the ADC. The SDIO (serial data input/output) is a dual-purpose pin that allows data to be sent and read from the internal ADC memory map registers. The CSB (chip select bar) is an active-low control that enables or disables the read and write cycles.

**Table 13. Serial Port Interface Pins**

| Pin  | Function  |
|------|---|
| SCLK | Serial Clock. The serial shift clock input, which is used to synchronize serial interface reads and writes.   |
| SDIO | Serial Data Input/Output. A dual-purpose pin that typically serves as an input or an output, depending on the instruction being sent and the relative position in the timing frame. |
| CSB  | Chip Select Bar. An active-low control that gates the read and write cycles.  |

The falling edge of CSB, in conjunction with the rising edge of SCLK, determines the start of the framing. An example of the serial timing and its definitions can be found in Figure 58 and Table 5.

Other modes involving the CSB are available. The CSB can be held low indefinitely, which permanently enables the device; this is called streaming. The CSB can stall high between bytes to allow for additional external timing. When CSB is tied high, SPI functions are placed in high impedance mode. This mode turns on any SPI pin secondary functions.

During an instruction phase, a 16-bit instruction is transmitted. Data follows the instruction phase, and its length is determined by the W0 and W1 bits as shown in Figure 58.

All data is composed of 8-bit words. The first bit of the first byte in a multibyte serial data transfer frame indicates whether a read command or a write command is issued. This allows the serial data input/output (SDIO) pin to change direction from an input to an output at the appropriate point in the serial frame.

In addition to word length, the instruction phase determines whether the serial frame is a read or write operation, allowing the serial port to be used both to program the chip and to read the contents of the on-chip memory. If the instruction is a readback operation, performing a readback causes the serial data input/output (SDIO) pin to change direction from an input to an output at the appropriate point in the serial frame.

Data can be sent in MSB-first mode or in LSB-first mode. MSB first is the default on power-up and can be changed via the SPI port configuration register. For more information about this and other features, see the [AN-877](#) Application Note, *Interfacing to High Speed ADCs via SPI*.

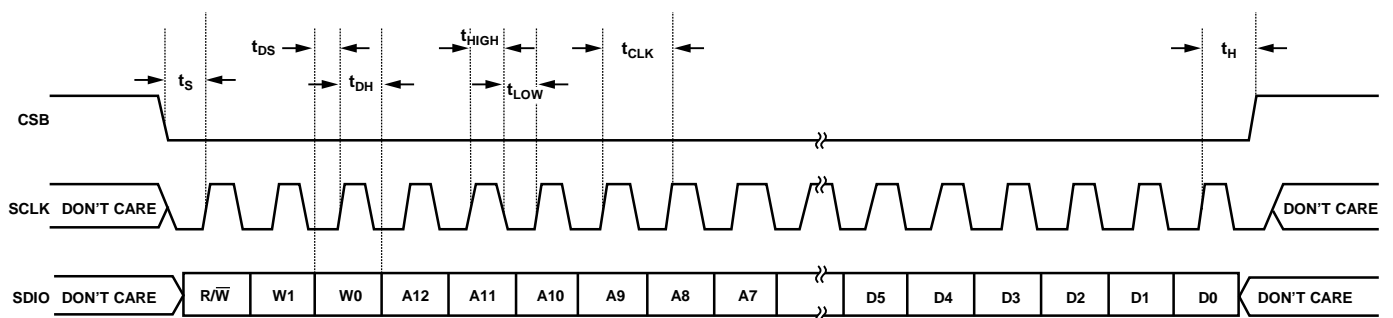


Figure 58. Serial Port Interface Timing Diagram

## HARDWARE INTERFACE

The pins described in Table 13 constitute the physical interface between the programming device of the user and the serial port of the AD9251. The SCLK pin and the CSB pin function as inputs when using the SPI interface. The SDIO pin is bidirectional, functioning as an input during write phases and as an output during readback.

The SPI interface is flexible enough to be controlled by either FPGAs or microcontrollers. One method for SPI configuration is described in detail in the [AN-812](#) Application Note, *Microcontroller-Based Serial Port Interface (SPI) Boot Circuit*.

The SPI port should not be active during periods when the full dynamic performance of the converter is required. Because the SCLK signal, the CSB signal, and the SDIO signal are typically asynchronous to the ADC clock, noise from these signals can degrade converter performance. If the on-board SPI bus is used for other devices, it may be necessary to provide buffers between this bus and the AD9251 to prevent these signals from transitioning at the converter inputs during critical sampling periods.

SDIO/DCS and SCLK/DFS serve a dual function when the SPI is not being used. When the pins are strapped to AVDD or ground during device power-on, they are associated with a specific function. The Digital Outputs section describes the strappable functions supported on the AD9251.

## CONFIGURATION WITHOUT THE SPI

In applications that do not interface to the SPI control registers, the SDIO/DCS pin, the SCLK/DFS pin, the OEB pin, and the PDWN pin serve as standalone CMOS-compatible control pins. When the device is powered up, it is assumed that the user intends to use the pins as static control lines for the duty cycle stabilizer, output data format, output enable, and power-down feature control. In this mode, connect the CSB chip select to AVDD, which disables the serial port interface.

**Table 14. Mode Selection**

| Pin      | External Voltage | Configuration                  |
|----------|------------------|--------------------------------|
| SDIO/DCS | AVDD (default)   | Duty cycle stabilizer enabled  |
|          | AGND             | Duty cycle stabilizer disabled |
| SCLK/DFS | AVDD             | Twos complement enabled        |
|          | AGND (default)   | Offset binary enabled          |
| OEB      | AVDD             | Outputs in high impedance      |
|          | AGND (default)   | Outputs enabled                |
| PDWN     | AVDD             | Chip in power-down or standby  |
|          | AGND (default)   | Normal operation               |

## SPI ACCESSIBLE FEATURES

Table 15 provides a brief description of the general features that are accessible via the SPI. These features are described in detail in the [AN-877](#) Application Note, *Interfacing to High Speed ADCs via SPI*. The AD9251 part-specific features are described in detail in Table 16.

**Table 15. Features Accessible Using the SPI**

| Feature      | Description   |
|--------------|---|
| Mode         | Allows the user to set either power-down mode or standby mode       |
| Clock        | Allows the user to access the DCS via the SPI                       |
| Offset       | Allows the user to digitally adjust the converter offset            |
| Test I/O     | Allows the user to set test modes to have known data on output bits |
| Output Mode  | Allows the user to set up outputs                                   |
| Output Phase | Allows the user to set the output clock polarity                    |
| Output Delay | Allows the user to vary the DCO delay                               |

## MEMORY MAP

### READING THE MEMORY MAP REGISTER TABLE

Each row in the memory map register table (see Table 16) has eight bit locations. The memory map is roughly divided into four sections: the chip configuration registers (Address 0x00 to Address 0x02); the device index and transfer registers (Address 0x05 and Address 0xFF); the program registers, including setup, control, and test (Address 0x08 to Address 0x2E); and the digital feature control registers (Address 0x100 and Address 0x101).

Table 16 documents the default hexadecimal value for each hexadecimal address shown. The column with the heading Bit 7 (MSB) is the start of the default hexadecimal value given. For example, Address 0x05, the Channel Index register, has a hexadecimal default value of 0x03. This means that in Address 0x05 Bit[7:2] = 0, and the remaining Bits[1:0] = 1. This setting is the default channel index setting. The default value results in both ADC channels receiving the next write command. For more information on this function and others, see the [AN-877](#) Application Note, *Interfacing to High Speed ADCs via SPI*. This document details the functions controlled by Register 0x00 to register 0xFF. The remaining registers, Register 0x100 and Register 0x101, are documented in the Memory Map Register Descriptions section following Table 16.

### OPEN LOCATIONS

All address and bit locations that are not included in the SPI map are not currently supported for this device. Unused bits of a valid address location should be written with 0s. Writing to these locations is required only when part of an address location is open (for example, Address 0x05). If the entire address location is open, it is omitted from the SPI map (for example, Address 0x13) and should not be written.

### DEFAULT VALUES

After the AD9251 is reset, critical registers are loaded with default values. The default values for the registers are given in the memory map register table (see Table 16).

#### Logic Levels

An explanation of logic level terminology follows:

- “Bit is set” is synonymous with “bit is set to Logic 1” or “writing Logic 1 for the bit.”
- “Clear a bit” is synonymous with “bit is set to Logic 0” or “writing Logic 0 for the bit.”

#### Transfer Register Map

Address 0x08 to Address 0x18 are shadowed. Writes to these addresses do not affect part operation until a transfer command is issued by writing 0x01 to Address 0xFF, setting the transfer bit. This allows these registers to be updated internally and simultaneously when the transfer bit is set. The internal update takes place when the transfer bit is set, and then the bit autoclears.

#### Channel-Specific Registers

Some channel setup functions can be programmed differently for each channel. In these cases, channel address locations are internally duplicated for each channel. These registers and bits are designated in the memory map register table as local. These local registers and bits can be accessed by setting the appropriate Channel A (Bit 0) or Channel B (Bit 1) bits in Register 0x05.

If both bits are set, the subsequent write affects the registers of both channels. In a read cycle, set only Channel A or Channel B to read one of the two registers. If both bits are set during an SPI read cycle, the part returns the value for Channel A. Registers and bits designated as global in the memory map register table affect the entire part or the channel features for which independent settings are not allowed between channels. The settings in Register 0x05 do not affect the global registers and bits.

**MEMORY MAP REGISTER TABLE**

All address and bit locations that are not included in Table 16 are not currently supported for this device.

**Table 16.**

| Address (Hex)   | Register Name                   | Bit 7 (MSB)                               | Bit 6  | Bit 5      | Bit 4 | Bit 3 | Bit 2   | Bit 1   | Bit 0 (LSB)          | Default Value (Hex)  | Comments   |
|---|---------------------------------|---|--|------------|-------|-------|---|---|----------------------|--|--|
| Chip Configuration Registers                                  |                                 |   |  |            |       |       |   |   |                      |  |  |
| 0x00  | SPI port configuration (global) | 0   | LSB first  | Soft reset | 1     | 1     | Soft reset  | LSB first   | 0                    | 0x18   | The nibbles are mirrored so that LSB- or MSB-first mode registers correctly, regardless of shift mode              |
| 0x01  | Chip ID (global)                | 8-bit chip ID bits [7:0]<br>AD9251 = 0x23 |  |            |       |       |   |   |                      |  | Unique chip ID used to differentiate devices; read only  |
| 0x02  | Chip grade (global)             | Open                                      | Speed grade ID 6:4<br>20 MSPS = 000<br>40 MSPS = 001<br>65 MSPS = 010<br>80 MSPS = 011 |            |       | Open  |   |   |                      | Unique speed grade ID used to differentiate devices; read only |  |
| Device Index and Transfer Registers                           |                                 |   |  |            |       |       |   |   |                      |  |  |
| 0x05  | Channel index                   | Open                                      | Open   | Open       | Open  | Open  | Open  | ADC B default   | ADC A default        | 0x03   | Bits are set to determine which device on chip receives the next write command; the default is all devices on chip |
| 0xFF  | Transfer                        | Open                                      | Open   | Open       | Open  | Open  | Open  | Open  | Transfer             | 0x00   | Synchronously transfers data from the master shift register to the slave   |
| Program Registers (May or May Not Be Indexed by Device Index) |                                 |   |  |            |       |       |   |   |                      |  |  |
| 0x08  | Modes                           | External power-down enable (local)        | External pin function<br>0x00 full power-down<br>0x01 standby (local)                  |            | Open  | Open  |   | 00 = chip run<br>01 = full power-down<br>10 = standby<br>11 = chip wide digital reset (local) |                      | 0x80   | Determines various generic modes of chip operation   |
| 0x09  | Clock (global)                  | Open                                      | Open   | Open       | Open  |       |   | Open  | Duty cycle stabilize | 0x00   |  |
| 0x0B  | Clock divide (global)           | Open                                      |  |            |       |       | Clock divider [2:0]<br>Clock divide ratio<br>000 = divide by 1<br>001 = divide by 2<br>010 = divide by 3<br>011 = divide by 4<br>100 = divide by 5<br>101 = divide by 6<br>110 = divide by 7<br>111 = divide by 8 |   |                      | 0x00   | The divide ratio is the value plus 1   |

| Address (Hex) | Register Name         | Bit 7 (MSB)  | Bit 6 | Bit 5   | Bit 4                  | Bit 3  | Bit 2  | Bit 1  | Bit 0 (LSB) | Default Value (Hex) | Comments  |
|---------------|-----------------------|--|-------|---|------------------------|--|--|--|-------------|---------------------|---|
| 0x0D          | Test mode (local)     | User test mode (local)<br>00 = single<br>01 = alternate<br>10 = single once<br>11 = alternate once               |       | Reset PN long gen   | Reset PN short gen     | Output test mode [3:0] (local)<br>0000 = off (default)<br>0001 = midscale short<br>0010 = positive FS<br>0011 = negative FS<br>0100 = alternating checkerboard<br>0101 = PN 23 sequence<br>0110 = PN 9 sequence<br>0111 = one/zero word toggle<br>1000 = user input<br>1001 = 1-/0-bit toggle<br>1010 = 1x sync<br>1011 = one bit high<br>1100 = mixed bit frequency |  |  |             | 0x00                | When set, the test data is placed on the output pins in place of normal data  |
| 0x0E          | BIST enable           | Open   |       |   |                        | Open   | BIST INIT  | Open   | BIST enable | 0x00                | When Bit 0 is set, the BIST function is initiated   |
| 0x10          | Offset adjust (local) | 8-bit device offset adjustment [7:0] (local)<br>Offset adjust in LSBs from +127 to -128 (twos complement format) |       |   |                        |  |  |  |             | 0x00                | Device offset trim  |
| 0x14          | Output mode           | 00 = 3.3 V CMOS<br>10 = 1.8 V CMOS   |       | Output mux enable (interleaved)   | Output disable (local) | Open   | Output invert (local)  | 00 = offset binary<br>01 = twos complement<br>10 = gray code<br>11 = offset binary (local)                 |             | 0x00                | Configures the outputs and the format of the data   |
| 0x15          | OUTPUT_ADJUST         | 3.3 V DCO drive strength<br>00 = 1 stripe (default)<br>01 = 2 stripes<br>10 = 3 stripes<br>11 = 4 stripes        |       | 1.8 V DCO drive strength<br>00 = 1 stripe<br>01 = 2 stripes<br>10 = 3 stripes (default)<br>11 = 4 stripes |                        | 3.3 V data drive strength<br>00 = 1 stripe (default)<br>01 = 2 stripes<br>10 = 3 stripes<br>11 = 4 stripes   |  | 1.8 V data drive strength<br>00 = 1 stripe<br>01 = 2 stripes<br>10 = 3 stripes (default)<br>11 = 4 stripes |             | 0x22                | Determines CMOS output drive strength properties  |
| 0x16          | OUTPUT_PHASE          | DCO output polarity<br>0 = normal<br>1 = inverted (local)  |       |   |                        |  | Input clock phase adjust [2:0] (Value is number of input clock cycles of phase delay)<br>000 = no delay<br>001 = 1 input clock cycle<br>010 = 2 input clock cycles<br>011 = 3 input clock cycles<br>100 = 4 input clock cycles<br>101 = 5 input clock cycles<br>110 = 6 input clock cycles<br>111 = 7 input clock cycles |  |             | 0x00                | On devices that utilize global clock divide, determines which phase of the divider output is used to supply the output clock; internal latching is unaffected |
| 0x17          | OUTPUT_DELAY          | Enable DCO delay   |       | Enable data delay   |                        |  | DCO/Data delay [2:0]<br>000 = 0.56 ns<br>001 = 1.12 ns<br>010 = 1.68 ns<br>011 = 2.24 ns<br>100 = 2.80 ns<br>101 = 3.36 ns<br>110 = 3.92 ns<br>111 = 4.48 ns   |  |             | 0x00                | This sets the fine output delay of the output clock but does not change internal timing   |
| 0x19          | USER_PATT1_LSB        | B7   | B6    | B5  | B4                     | B3   | B2   | B1   | B0          | 0x00                | User-defined pattern, 1 LSB   |
| 0x1A          | USER_PATT1_MSB        | B15  | B14   | B13   | B12                    | B11  | B10  | B9   | B8          | 0x00                | User-defined pattern, 1 MSB   |
| 0x1B          | USER_PATT2_LSB        | B7   | B6    | B5  | B4                     | B3   | B2   | B1   | B0          | 0x00                | User-defined pattern, 2 LSB   |
| 0x1C          | USER_PATT2_MSB        | B15  | B14   | B13   | B12                    | B11  | B10  | B9   | B8          | 0x00                | User-defined pattern, 2 MSB   |

| Address (Hex)           | Register Name         | Bit 7 (MSB)               | Bit 6 | Bit 5 | Bit 4 | Bit 3              | Bit 2                        | Bit 1                     | Bit 0 (LSB)                    | Default Value (Hex)        | Comments  |
|-------------------------|-----------------------|---------------------------|-------|-------|-------|--------------------|------------------------------|---------------------------|--------------------------------|----------------------------|---|
| 0x24                    | MISR_LSB              | Open                      | Open  | Open  | Open  | Open               | Open                         | Open                      | B0                             | 0x00                       | Least significant byte of MISR; read only           |
| 0x2A                    | Features              | Open                      | Open  | Open  | Open  | Open               | Open                         | Open                      | OR OE (local)                  | 0x01                       | Disable the OR pin for the indexed channel          |
| 0x2E                    | Output assign         | Open                      | Open  | Open  | Open  | Open               | Open                         | Open                      | 0 = ADC A<br>1 = ADC B (local) | Ch A = 0x00<br>Ch B = 0x01 | Assign an ADC to an output channel                  |
| Digital Feature Control |                       |                           |       |       |       |                    |                              |                           |                                |                            |   |
| 0x100                   | Sync control (global) | Open                      | Open  | Open  | Open  | Open               | Clock divider next sync only | Clock divider sync enable | Master sync enable             | 0x01                       |   |
| 0x101                   | USR2                  | Enable OEB Pin 47 (local) | Open  | Open  | Open  | Enable GCLK detect | Run GCLK                     | Open                      | Disable SDIO pull-down         | 0x88                       | Enables internal oscillator for clock rates < 5 MHz |

## MEMORY MAP REGISTER DESCRIPTIONS

For additional information about functions controlled in Register 0x00 to Register 0xFF, see the [AN-877](#) Application Note, *Interfacing to High Speed ADCs via SPI*.

### Sync Control (Register 0x100)

#### Bits[7:3]—Reserved

#### Bit 2—Clock Divider Next Sync Only

If the master sync enable bit (Address 0x100, Bit 0) and the clock divider sync enable bit (Address 0x100, Bit 1) are high, Bit 2 allows the clock divider to sync to the first sync pulse it receives and to ignore the rest. The clock divider sync enable bit (Address 0x100, Bit 1) resets after it syncs.

#### Bit 1—Clock Divider Sync Enable

Bit 1 gates the sync pulse to the clock divider. The sync signal is enabled when Bit 1 and Bit 0 are high and the device is operating in continuous sync mode as long as Bit 2 of the sync control is low.

#### Bit 0—Master Sync Enable

Bit 0 must be high to enable any of the sync functions.

### USR2 (Register 0x101)

#### Bit 7—Enable OEB Pin 47

Normally set high, this bit allows Pin 47 to function as the output enable. If it is set low, it disables Pin 47.

#### Bit 3—Enable GCLK Detect

Normally set high, this bit enables a circuit that detects encode rates below about 5 MSPS. When a low encode rate is detected, an internal oscillator, GCLK, is enabled ensuring the proper operation of several circuits. If set low, the detector is disabled.

#### Bit 2—Run GCLK

This bit enables the GCLK oscillator. For some applications with encode rates below 10 MSPS, it may be preferable to set this bit high to supersede the GCLK detector.

#### Bit 0—Disable SDIO Pull-Down

This bit can be set high to disable the internal 30 kΩ pull-down on the SDIO pin, which can be used to limit the loading when many devices are connected to the SPI bus.

## APPLICATIONS INFORMATION

### DESIGN GUIDELINES

Before starting design and layout of the AD9251 as a system, it is recommended that the designer become familiar with these guidelines, which discuss the special circuit connections and layout requirements needed for certain pins.

#### **Power and Ground Recommendations**

When connecting power to the AD9251, it is strongly recommended that two separate supplies be used. Use one 1.8 V supply for analog (AVDD); use a separate 1.8 V to 3.3 V supply for the digital output supply (DRVDD). If a common 1.8 V AVDD and DRVDD supply must be used, the AVDD and DRVDD domains must be isolated with a ferrite bead or filter choke and separate decoupling capacitors. Several different decoupling capacitors can be used to cover both high and low frequencies. Locate these capacitors close to the point of entry at the PCB level and close to the pins of the part, with minimal trace length.

A single PCB ground plane should be sufficient when using the AD9251. With proper decoupling and smart partitioning of the PCB analog, digital, and clock sections, optimum performance is easily achieved.

#### **Exposed Paddle Thermal Heat Sink Recommendations**

The exposed paddle (Pin 0) is the only ground connection for the AD9251; therefore, it must be connected to analog ground (AGND) on the PCB of the customer. To achieve the best electrical and thermal performance, mate an exposed (no solder mask) continuous copper plane on the PCB to the AD9251 exposed paddle, Pin 0.

The copper plane should have several vias to achieve the lowest possible resistive thermal path for heat dissipation to flow through the bottom of the PCB. Fill or plug these vias with nonconductive epoxy.

To maximize the coverage and adhesion between the ADC and the PCB, a silkscreen should be overlaid to partition the continuous plane on the PCB into several uniform sections. This provides several tie points between the ADC and the PCB during the reflow process. Using one continuous plane with no partitions guarantees only one tie point between the ADC and the PCB. For detailed information about packaging and PCB layout of chip scale packages, see the [AN-772](#) Application Note, *A Design and Manufacturing Guide for the Lead Frame Chip Scale Package (LFCSP)*.

#### **VCM**

The VCM pin should be decoupled to ground with a 0.1  $\mu\text{F}$  capacitor, as shown in Figure 42.

#### **RBIAS**

The AD9251 requires that a 10 k $\Omega$  resistor be placed between the RBIAS pin and ground. This resistor sets the master current reference of the ADC core and should have at least a 1% tolerance.

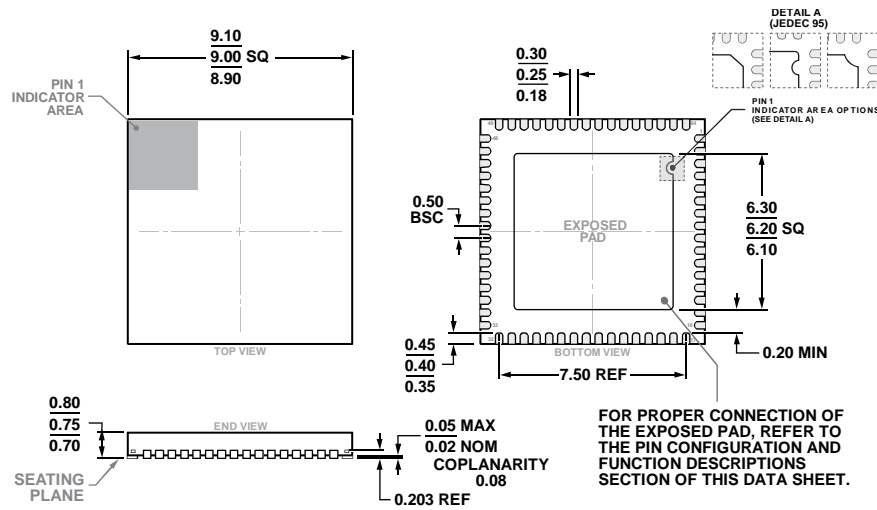
#### **Reference Decoupling**

The VREF pin should be externally decoupled to ground with a low ESR, 1.0  $\mu\text{F}$  capacitor in parallel with a low ESR, 0.1  $\mu\text{F}$  ceramic capacitor.

#### **SPI Port**

The SPI port should not be active during periods when the full dynamic performance of the converter is required. Because the SCLK, CSB, and SDIO signals are typically asynchronous to the ADC clock, noise from these signals can degrade converter performance. If the on-board SPI bus is used for other devices, it may be necessary to provide buffers between this bus and the AD9251 to keep these signals from transitioning at the converter inputs during critical sampling periods.

OUTLINE DIMENSIONS



COMPLIANT TO JEDEC STANDARDS MO-220-WMMD

Figure 59. 64-Lead Lead Frame Chip Scale Package [LFCSP]  
9 mm × 9 mm Body and 0.75 mm Package Height  
(CP-64-17)  
Dimensions shown in millimeters

ORDERING GUIDE

| Model <sup>1, 2</sup> | Temperature Range | Package Description                           | Package Option |
|-----------------------|-------------------|---|----------------|
| AD9251BCPZ-80         | -40°C to +85°C    | 64-Lead Lead Frame Chip Scale Package [LFCSP] | CP-64-17       |
| AD9251BCPZRL7-80      | -40°C to +85°C    | 64-Lead Lead Frame Chip Scale Package [LFCSP] | CP-64-17       |
| AD9251BCPZ-65         | -40°C to +85°C    | 64-Lead Lead Frame Chip Scale Package [LFCSP] | CP-64-17       |
| AD9251BCPZRL7-65      | -40°C to +85°C    | 64-Lead Lead Frame Chip Scale Package [LFCSP] | CP-64-17       |
| AD9251BCPZ-40         | -40°C to +85°C    | 64-Lead Lead Frame Chip Scale Package [LFCSP] | CP-64-17       |
| AD9251BCPZRL7-40      | -40°C to +85°C    | 64-Lead Lead Frame Chip Scale Package [LFCSP] | CP-64-17       |
| AD9251BCPZ-20         | -40°C to +85°C    | 64-Lead Lead Frame Chip Scale Package [LFCSP] | CP-64-17       |
| AD9251BCPZRL7-20      | -40°C to +85°C    | 64-Lead Lead Frame Chip Scale Package [LFCSP] | CP-64-17       |
| AD9251-80EBZ          |                   | Evaluation Board                              |                |
| AD9251-65EBZ          |                   | Evaluation Board                              |                |
| AD9251-40EBZ          |                   | Evaluation Board                              |                |
| AD9251-20EBZ          |                   | Evaluation Board                              |                |

<sup>1</sup> Z = RoHS Compliant Part.

<sup>2</sup> The exposed paddle (Pin 0) is the only GND connection on the chip and must be connected to the PCB AGND.

## Looking for pricing, stock, or lifecycle information?

Click below to explore more details on WIN SOURCE:

 [View AD9251BCPZRL7-40 on WIN SOURCE](#)

 [Analog Devices Inc. Information](#)

## Optimize Your Supply Chain with WIN SOURCE Solutions

-  Global Sourcing Solution
-  Obsolete Management
-  Cost Control Management
-  Shortage Management
-  Alternative Solution
-  Excess Inventory Management