

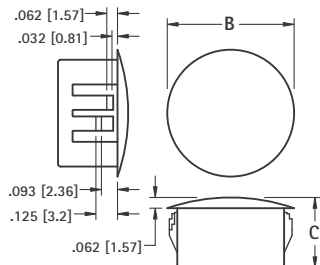
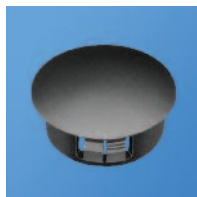


THE DATASHEET OF
8604



NYLON HOLE PLUGS

Closes unused chassis holes quickly and economically. Plugs are abrasion and vibration resistant.

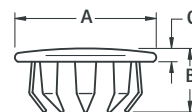


MATERIAL: Nylon 6/6, Matte Finish, Black

| CAT. NO. | HOLE DIAMETER | PANEL THICK MAX | B | C |
|----------|---------------|-----------------|--------------|-------------|
| 8600 | .250 (6.4) | .062 (1.57) | .312 (7.9) | .312 (7.9) |
| 8601 | .312 (7.9) | .062 (1.57) | .375 (9.5) | .312 (7.9) |
| 8602 | .375 (9.5) | .125 (3.2) | .468 (11.9) | .406 (10.3) |
| 8603 | .500 (12.7) | .125 (3.2) | .578 (14.7) | .406 (10.3) |
| 8604 | .625 (15.9) | .125 (3.2) | .734 (18.6) | .406 (10.3) |
| 8605 | .750 (19.1) | .125 (3.2) | .921 (23.4) | .406 (10.3) |
| 8606 | .875 (22.2) | .125 (3.2) | 1.015 (25.8) | .453 (11.5) |
| 8607 | 1.000 (25.4) | .125 (3.2) | 1.203 (30.6) | .453 (11.5) |
| 8608 | 1.125 (28.6) | .125 (3.2) | 1.218 (30.9) | .453 (11.5) |
| 8609 | 1.250 (31.8) | .125 (3.2) | 1.375 (34.9) | .453 (11.5) |
| 8610 | 1.375 (34.9) | .125 (3.2) | 1.500 (38.1) | .453 (11.5) |
| 8611 | 1.500 (38.1) | .125 (3.2) | 1.671 (42.4) | .453 (11.5) |

STEEL HOLE PLUGS

Excellent spring retention. Plugs will cover chassis holes, wiring outlets, access holes or unused openings.



MATERIAL: Steel, Nickel Plate

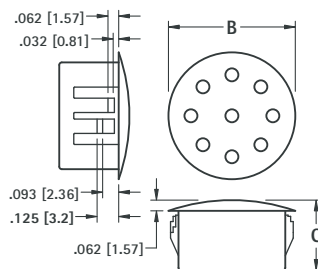
| CAT. NO. | HOLE DIAMETER | PANEL THICKNESS | A | B | C | PRONGS |
|----------|---------------|-----------------------|--------------|-------------|-------------|--------|
| 7600 | .250 (6.4) | .031-.062 (.81-1.57) | .406 (10.3) | .234 (5.9) | .062 (1.57) | 6 |
| 7601 | .312 (7.9) | .047-.078 (1.19-1.98) | .437 (11.1) | .250 (6.4) | .062 (1.57) | 6 |
| 7602 | .375 (9.5) | .047-.062 (1.19-1.57) | .500 (12.7) | .234 (5.9) | .062 (1.57) | 6 |
| 7603 | .500 (12.7) | .031-.062 (.81-1.57) | .656 (16.7) | .281 (7.1) | .078 (1.98) | 8 |
| 7604 | .625 (15.9) | .062-.093 (1.57-2.36) | .812 (20.6) | .296 (7.5) | .078 (1.98) | 8 |
| 7605 | .750 (19.1) | .062-.093 (1.5-2.36) | .921 (23.4) | .296 (7.5) | .078 (1.98) | 12 |
| 7606 | .875 (22.2) | .062-.093 (1.57-2.36) | 1.062 (27.0) | .296 (7.5) | .062 (1.57) | 12 |
| 7607 | 1.000 (25.4) | .062-.156 (1.57-3.9) | 1.140 (29.0) | .328 (8.3) | .093 (2.36) | 12 |
| 7608 | 1.125 (28.6) | .031-.125 (.79-3.2) | 1.312 (33.3) | .343 (8.7) | .093 (2.36) | 12 |
| 7609 | 1.250 (31.8) | .062-.093 (1.57-2.36) | 1.437 (36.5) | .343 (8.7) | .093 (2.36) | 12 |
| 7610 | 1.375 (34.9) | .031-.125 (.79-3.2) | 1.562 (39.7) | .406 (10.3) | .078 (1.98) | 12 |
| 7611 | 1.500 (38.1) | .031-.062 (.79-1.57) | 1.640 (41.7) | .406 (10.3) | .093 (2.36) | 12 |

NYLON VENT PLUGS

Used to cover chassis holes while allowing air flow for ventilation.



- Snaps into .032 (.81) to .125 (3.2) thick panels.

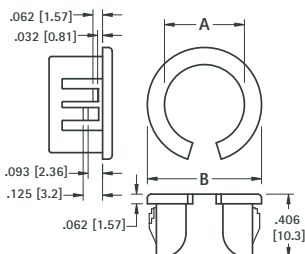


MATERIAL: Nylon 6/6, Matte Finish, Black

| CAT. NO. | HOLE DIAMETER | B | C |
|----------|---------------|--------------|-------------|
| 8612 | .875 (22.2) | 1.015 (25.8) | .453 (11.5) |
| 8613 | 1.000 (25.4) | 1.218 (30.9) | .453 (11.5) |

NYLON SPLIT BUSHINGS

Designed to be assembled into holes that already contain wire or cable. Versatile bushing can be used on all chassis from .032 (.81) to .125 (3.2).

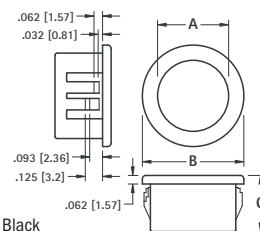


MATERIAL: Nylon 6/6, Black

| CAT. NO. | HOLE SIZE REQUIRED | A INSIDE DIAMETER | B HEAD DIAMETER |
|----------|--------------------|-------------------|-----------------|
| 8490 | .375 (9.5) | .265 (6.7) | .421 (10.7) |
| 8491 | .500 (12.7) | .312 (7.9) | .562 (14.3) |
| 8492 | .562 (14.3) | .390 (9.9) | .640 (16.3) |
| 8493 | .625 (15.9) | .453 (11.5) | .687 (17.4) |
| 8494 | .750 (19.1) | .546 (13.9) | .796 (20.2) |
| 8495 | .875 (22.2) | .671 (17.0) | .921 (23.4) |
| 8496 | 1.000 (25.4) | .796 (20.2) | 1.062 (27.0) |

NYLON INSULATING BUSHINGS

Snaps into panel hole to provide protection for wire, cable and tubing from sharp uneven edges.



MATERIAL: Nylon 6/6, Black

| CAT. NO. | HOLE SIZE REQUIRED | MAXIMUM CHASSIS THICKNESS | A INSIDE DIAMETER | B HEAD DIAMETER | C OVERALL HEIGHT |
|----------|--------------------|---------------------------|-------------------|-----------------|------------------|
| 8470 | .250 (6.4) | .062 (1.57) | .125 (3.2) | .312 (7.9) | .312 (7.9) |
| 8471 | .312 (7.9) | .062 (1.57) | .187 (4.7) | .375 (9.5) | .312 (7.9) |
| 8472 | .375 (9.5) | .125 (3.2) | .250 (6.4) | .468 (11.9) | .406 (10.3) |
| 8473 | .437 (11.1) | .125 (3.2) | .312 (7.9) | .531 (13.5) | .406 (10.3) |
| 8474 | .500 (12.7) | .125 (3.2) | .375 (9.5) | .578 (14.7) | .406 (10.3) |
| 8475 | .562 (14.3) | .125 (3.2) | .437 (11.1) | .656 (16.7) | .406 (10.3) |
| 8476 | .625 (15.9) | .125 (3.2) | .500 (12.7) | .718 (18.2) | .406 (10.3) |
| 8477 | .750 (19.1) | .125 (3.2) | .562 (14.3) | .843 (21.4) | .406 (10.3) |
| 8478 | .875 (22.2) | .125 (3.2) | .625 (15.9) | .953 (24.2) | .453 (11.5) |
| 8479 | 1.000 (25.4) | .125 (3.2) | .750 (19.1) | 1.125 (28.6) | .453 (11.5) |
| 8480 | 1.187 (30.1) | .125 (3.2) | .937 (23.8) | 1.312 (33.3) | .453 (11.5) |
| 8481 | 1.250 (31.8) | .125 (3.2) | .937 (23.8) | 1.359 (34.5) | .453 (11.5) |
| 8482 | 1.375 (34.9) | .125 (3.2) | 1.000 (25.4) | 1.468 (37.3) | .453 (11.5) |
| 8483 | 1.500 (38.1) | .125 (3.2) | 1.062 (27.0) | 1.609 (40.9) | .453 (11.5) |
| 8484 | 1.750 (44.5) | .125 (3.2) | 1.375 (34.9) | 1.875 (47.6) | .453 (11.5) |
| 8485 | 2.000 (50.8) | .125 (3.2) | 1.625 (41.3) | 2.125 (54.0) | .453 (11.5) |
| 8486 | 2.500 (63.5) | .250 (6.4) | 1.968 (50.0) | 2.656 (67.5) | .718 (18.2) |

Looking for pricing, stock, or lifecycle information?

Click below to explore more details on WIN SOURCE:

- ⊖ [View 8604 on WIN SOURCE](#)
- ⊖ [Keystone Electronics Information](#)

Optimize Your Supply Chain with WIN SOURCE Solutions

- ✓ Global Sourcing Solution
- ✓ Obsolete Management
- ✓ Cost Control Management
- ✓ Shortage Management
- ✓ Alternative Solution
- ✓ Excess Inventory Management