



THE DATASHEET OF
5027



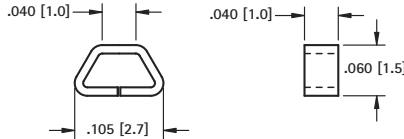
(SMT) SURFACE MOUNT TEST POINTS ON TAPE & REEL

SUPPLIED ON TAPE AND REEL

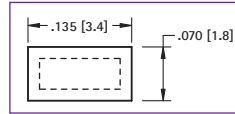
- Manufactured using flat wire to provide a large mounting surface area
- Efficient, safe, board level testing
- Simplifies testing on dense circuit boards
- Compatible with vacuum and mechanical pick & place assembly systems
- All conductive polystyrene carrier tape meets ANSA/EIA-481 standards

- Ideal for use with miniature probes, clips and hooks
- Ultra low profile, ideal for advanced surface mount PCB applications

MICRO MINIATURE



Pad Layout



SPECIFICATIONS

Material:

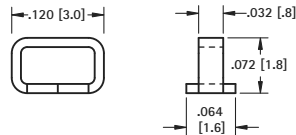
.010 (.25) Phosphor Bronze, Silver Plate

CAT. NO. 5015 - 1000 pieces per reel **CAT. NO. 5017** - 5000 pieces per reel

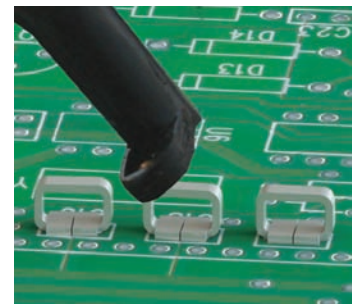
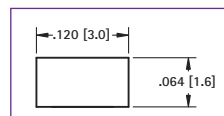
Tape & Reel Spec's: 8mm Wide, 4mm Pitch

- Ideal for use with most standard probes, clips and hooks
- Unique design provides exceptional strength and durability

MINIATURE



Pad Layout



SPECIFICATIONS

Material:

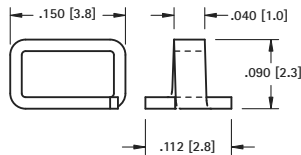
.015 (.38) Phosphor Bronze, Silver Plate

CAT. NO. 5019 - 1000 pieces per reel **CAT. NO. 5029** - 5000 pieces per reel

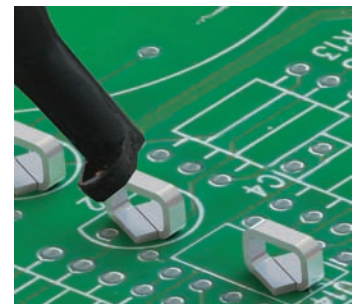
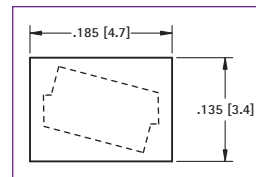
Tape & Reel Spec's: 12mm Wide, 4mm Pitch

- Ideal for use with standard probes, clips and hooks
- Unique design provides exceptional strength and durability

COMPACT



Pad Layout



SPECIFICATIONS

Material:

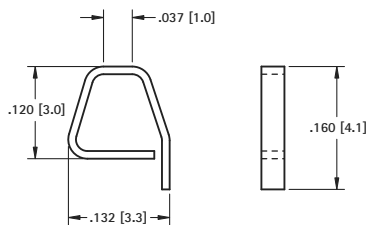
.015 (.38) Phosphor Bronze, Silver Plate

CAT. NO. 5016 - 1000 pieces per reel **CAT. NO. 5018** - 5000 pieces per reel

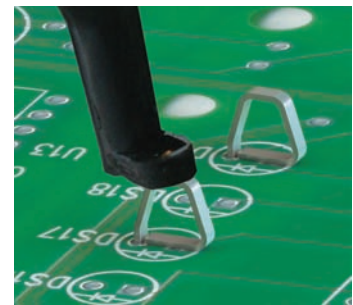
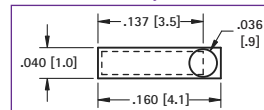
Tape & Reel Spec's: 12mm Wide, 4mm Pitch

- Locating Pin provides positive location during assembly process
- Increased solder strength
- Can be used as a SMT test point or when used with a .032 [.80] board, as a THM test point

HYBRID MOUNT



Pad Layout



SPECIFICATIONS

Material:

.010 (.25) Phosphor Bronze, Silver Plate

CAT. NO. 5027 - 800 pieces per reel

Tape & Reel Spec's: 12mm Wide, 4mm Pitch

SMT TEST POINTS

Looking for pricing, stock, or lifecycle information?

Click below to explore more details on WIN SOURCE:

-  [View 5027](#) on WIN SOURCE
-  [Keystone Electronics](#) Information

Optimize Your Supply Chain with WIN SOURCE Solutions

-  Global Sourcing Solution
-  Obsolete Management
-  Cost Control Management
-  Shortage Management
-  Alternative Solution
-  Excess Inventory Management