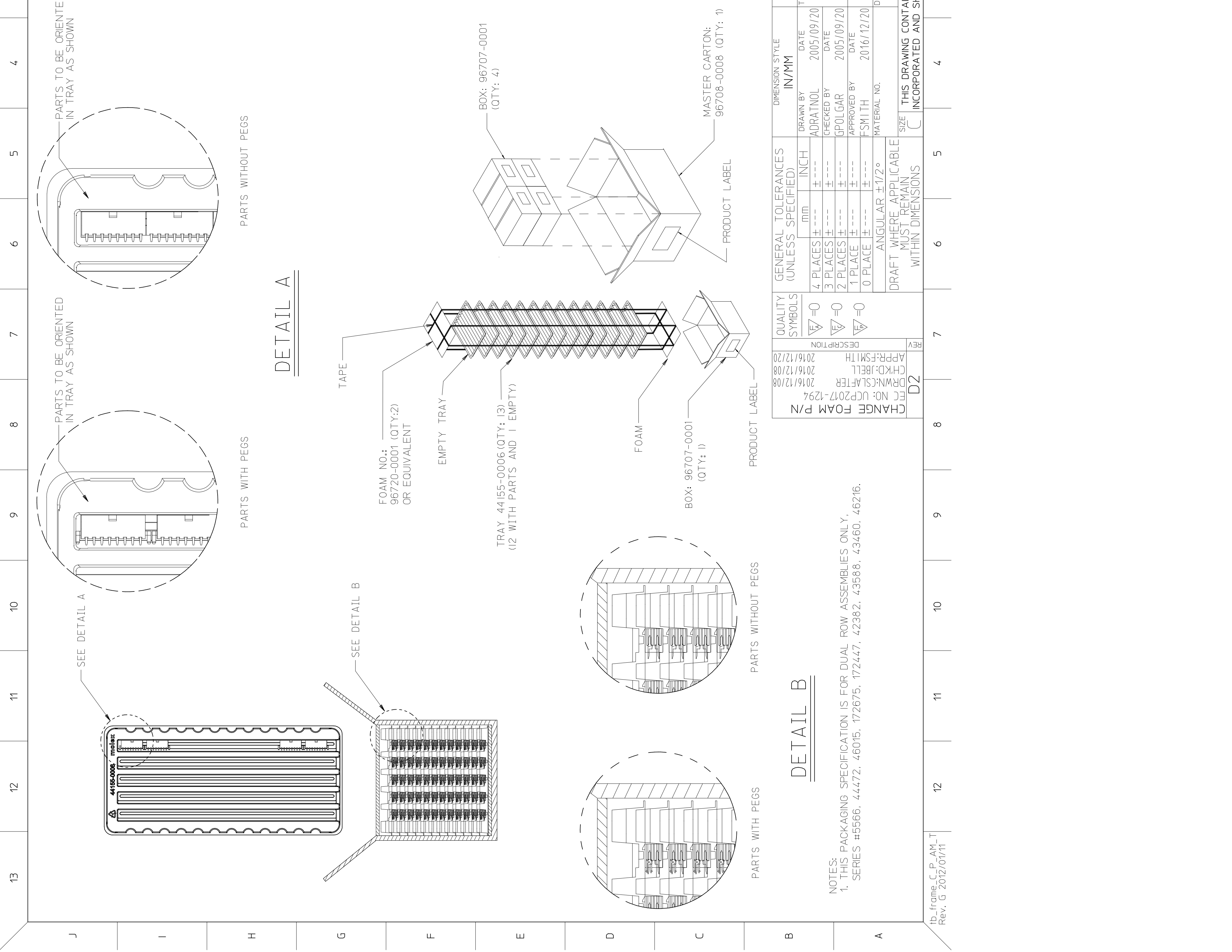




THE DATASHEET OF
0460151003





DETAIL A

DETAIL B

NOTES:
 1. THIS PACKAGING SPECIFICATION IS FOR DUAL ROW ASSEMBLIES ONLY,
 SERIES #5566, 44472, 46015, 172675, 172447, 42382, 43588, 43460, 46216.

QUALITY SYMBOLS		GENERAL TOLERANCES (UNLESS SPECIFIED)		DIMENSION STYLE	
SYMBOL	DESCRIPTION	mm	INCH	IN/MM	
$\nabla = 0$	APPR:FSM1TH	±---	±---	DRAWN BY	DATE
$\nabla = 0$	CHKD:JBELL	±---	±---	ADRNOL	2005/09/20
$\nabla = 0$	DRWN:CSLAFTR	±---	±---	CHECKED BY	DATE
	EC NO: UCP2017-1294	±---	±---	GPOLGAR	2005/09/20
	CHANGE FOAM P/N	±---	±---	APPROVED BY	DATE
		ANGULAR ±1/2°		FSM1TH	2016/12/20
		DRAFT WHERE APPLICABLE MUST REMAIN WITHIN DIMENSIONS		MATERIAL NO.	
				SIZE	
				THIS DRAWING CONTACT INCORPORATED AND S	

Looking for pricing, stock, or lifecycle information?

Click below to explore more details on WIN SOURCE:

[View 0460151003 on WIN SOURCE](#)

[Molex, LLC Information](#)

Optimize Your Supply Chain with WIN SOURCE Solutions

- ✓ Global Sourcing Solution
- ✓ Obsolete Management
- ✓ Cost Control Management
- ✓ Shortage Management
- ✓ Alternative Solution
- ✓ Excess Inventory Management