



THE DATASHEET OF
1718260100



Super Sabre Power Connector System

molex[®]

Delivering 34.0A per blade and withstanding up to +125°C operating temperatures, Super Sabre Power Connectors use proven technology for long-term performance and reliability in virtually every industry

34.0A per blade current rating and 600V

Match requirements for high-current and high-voltage applications in a low-profile design

USCAR-2, level 3 operating temperature to +125°C

Ideal for high-operating temperature applications, including

Flat-blade terminal design with four independent points of electrical contact

Offers redundant, secondary current paths for long-term performance and reliability. Provides a more reliable electrical connection than circular-style terminals

Silver-plated, high-conductivity alloy terminals

Provide high-performance connections that eliminate fretting-corrosion concerns. Delivers a more cost-effective solution compared to gold-plated terminals. Optimized for 10 to 12 AWG wires

Positive latch and terminal position assurance (TPA) features on receptacle

Prevent terminal back-out with mating plug or header in high-vibration applications

Fully isolated terminals on both mating sides

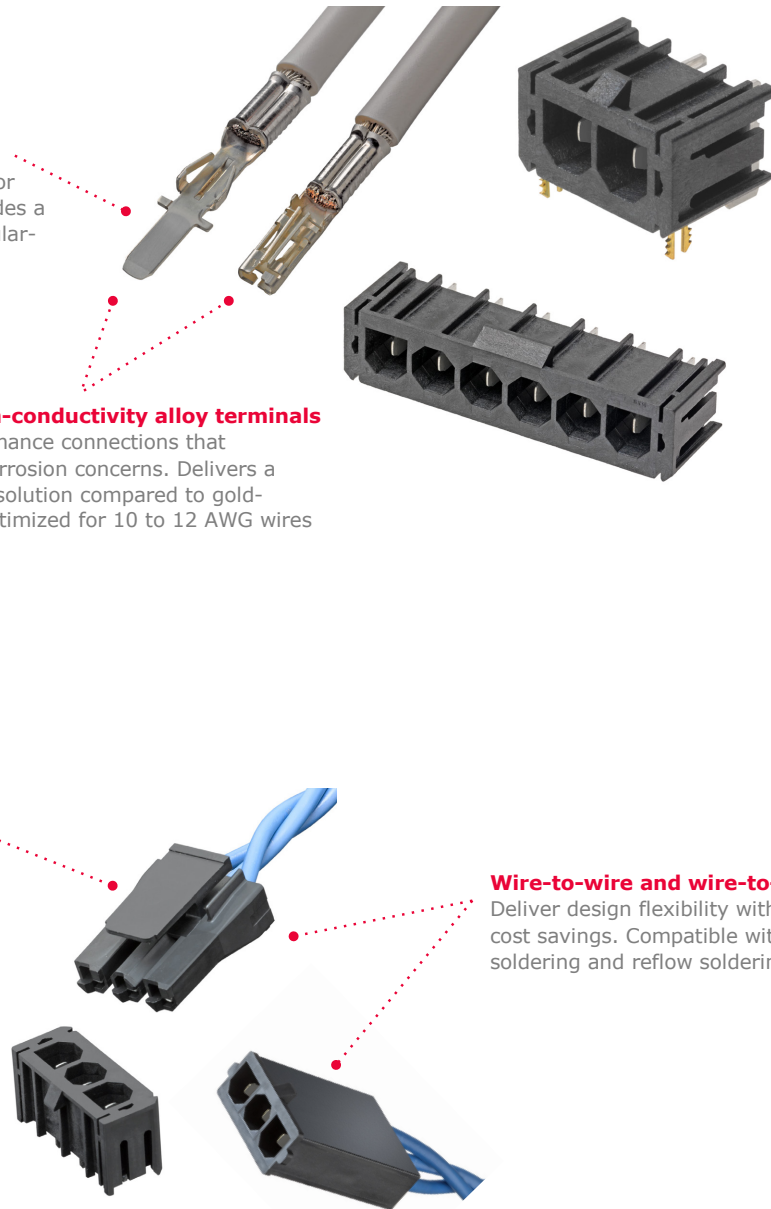
Provide complete protection against damage or shock

Wire-to-wire and wire-to-board configurations

Deliver design flexibility with significant space and cost savings. Compatible with lead-free wave soldering and reflow soldering processes

UL1977 and UL60950 finger-test-certified blade

Meets safety requirements for many consumer applications



Super Sabre Power Connector System



Home Appliance

- Ranges
- Refrigerators
- Laundry equipment
- Vacuums
- Air conditioners

Telecommunications/Networking

- Switches
- Servers
- Base stations
- Power supplies
- Fan / blower racks

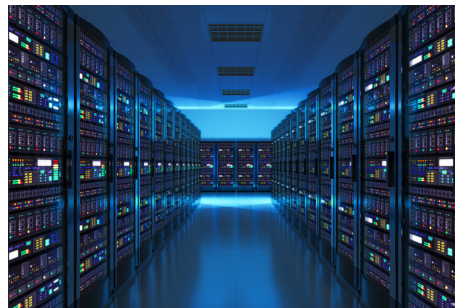
Medical

- Patient monitors
- Diagnostic imaging
- Therapeutic devices

Industrial

- 100 to 600W units

Commercial Vehicle



Specifications

REFERENCE INFORMATION

Packaging: Trays or Tubes
 UL File No.: E29179
 CSA File No.: LR19980
 Mates With: Super Sabre Plugs and Headers
 Terminal Used: Super Sabre terminals
 Designed In: Millimeters
 RoHS: Yes
 Halogen Free: Yes, Low Halogen
 Glow Wire Compliant: Optional

ELECTRICAL

Voltage (max.): 600V
 Current (max.): 34.0A
 Contact Resistance: 5 milliohms
 Dielectric Withstanding Voltage: 5000V
 Insulation Resistance: 1000 Megohms

MECHANICAL

Contact Insertion Force: 6.0N
 Contact Retention to Housing: 67.0N / 125.0N (TPA)
 Insertion Force to PCB (avg.): 34.0N
 Mating Force (max.): 17.8N
 Unmating Force (min.): 2.2N
 Durability (min.): 25 cycles

PHYSICAL

Housing:
 Headers: LCP
 Crimp Housing: Nylon
 Contact: High-performance copper alloy
 Plating:
 Contact Area — Silver
 Solder Tail Area — Tin
 Underplating — Nickel
 PCB Thickness: 1.57 to 3.18mm
 Operating Temperature:
 -40 to +125°C (per USCAR-2)

Ordering Information

Series No.	Component
172042	Vertical PCB Header
172043	Right-Angle PCB Header
171825	Female Crimp Terminal

Series No.	Component
171826	Male Crimp Terminal
172672	Receptacle Housing
172673	Plug Housing

www.molex.com/link/supersabre.html

Looking for pricing, stock, or lifecycle information?

Click below to explore more details on WIN SOURCE:

 [View 1718260100 on WIN SOURCE](#)

 [Molex, LLC Information](#)

Optimize Your Supply Chain with WIN SOURCE Solutions

-  Global Sourcing Solution
-  Obsolete Management
-  Cost Control Management
-  Shortage Management
-  Alternative Solution
-  Excess Inventory Management