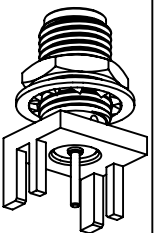




**THE DATASHEET OF**  
**132289**

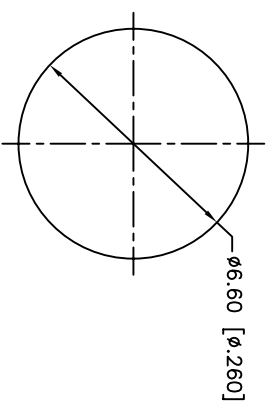
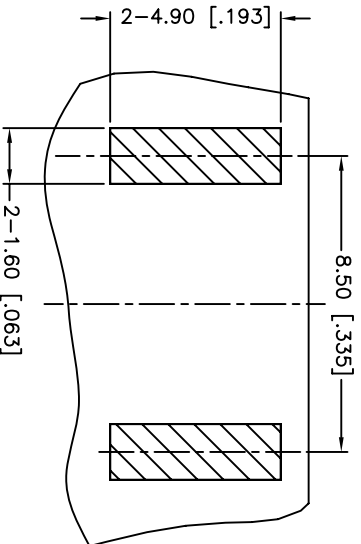




REV.	DATE	ECR NO.	DESCRIPTION
NC	06/19/08	XXXXXX	INITIAL RELEASE
A	10/26/11	2246	ADD THE RECOMMENDED PCB LAYOUT
B	11/30/11	2254	CHANGE THE CONTACT AND INSULATOR

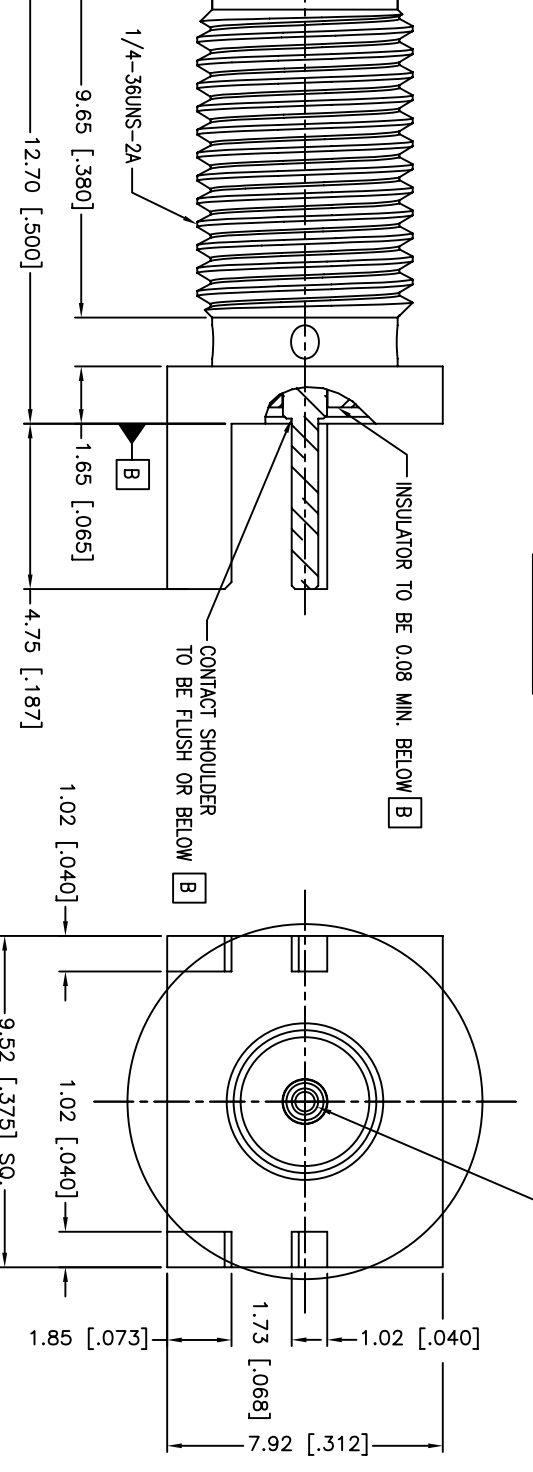
4.25 [.167]

0.30 [.012]



RECOMMENDED PCB LAYOUT

BOTTOM VIEW



UNLESS OTHERWISE SPECIFIED DIMENSIONS ARE IN MILLIMETERS. DIMENSIONS IN INCHES ARE IN PARENTHESES. RESERVE ONLY.

UNLESS OTHERWISE SPECIFIED TOLERANCES FOR MILLIMETERS ARE:

0.5 - 8mm  $\pm$  0.20mm  
8 - 30mm  $\pm$  0.40mm  
30 - 120mm  $\pm$  0.50mm

UNLESS OTHERWISE SPECIFIED TOLERANCES FOR INCHES ARE:

.020 - .315  $\pm$  0.007"  
.315 - 1.180  $\pm$  0.015"  
1.180 - 4.724  $\pm$  0.020"

APPROVALS

DATE

M. ZHANG

11/30/11

CHECKED

ISSUED

SHEET 1 OF 1

**Amphenol Connex**

PART DESCRIPTION  
SMA END LAUNCH BULKHEAD JACK  
(.062" BOARD THICKNESS)

PART NO.

132289

CAD FILE

C:/CONNEX/132289.DWG

DWG. NO. 132289.DWG

REV. A

SIZE A

SCALE NA

QTY

DO NOT SCALE DRAWING

FINISH

UJD 1

UJD 1

UJD 1


UJD 1

UJD 1

UJD 1

## Looking for pricing, stock, or lifecycle information?

Click below to explore more details on WIN SOURCE:

 [View 132289](#) on WIN SOURCE

 [Amphenol](#) Information

## Optimize Your Supply Chain with WIN SOURCE Solutions

-  Global Sourcing Solution
-  Obsolete Management
-  Cost Control Management
-  Shortage Management
-  Alternative Solution
-  Excess Inventory Management