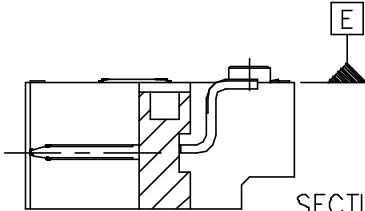
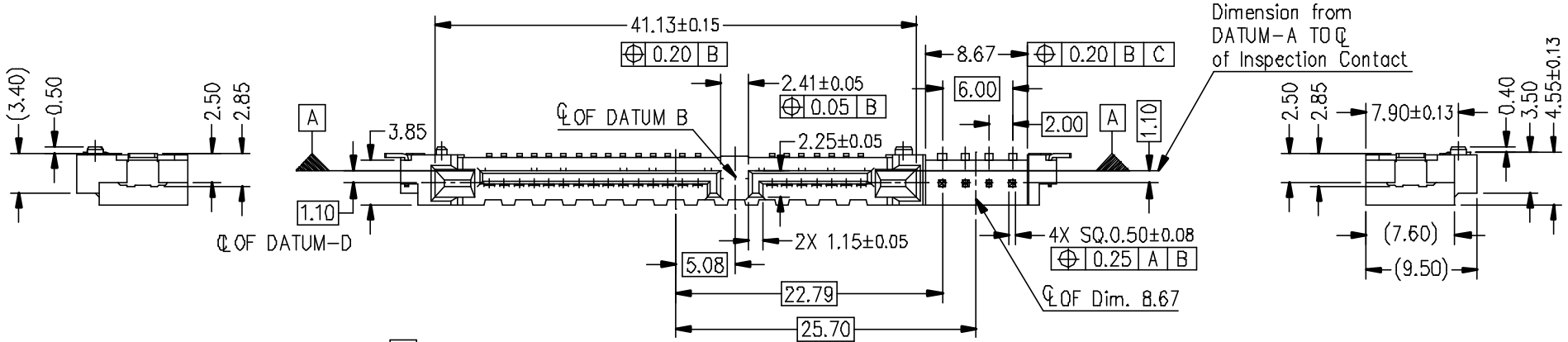
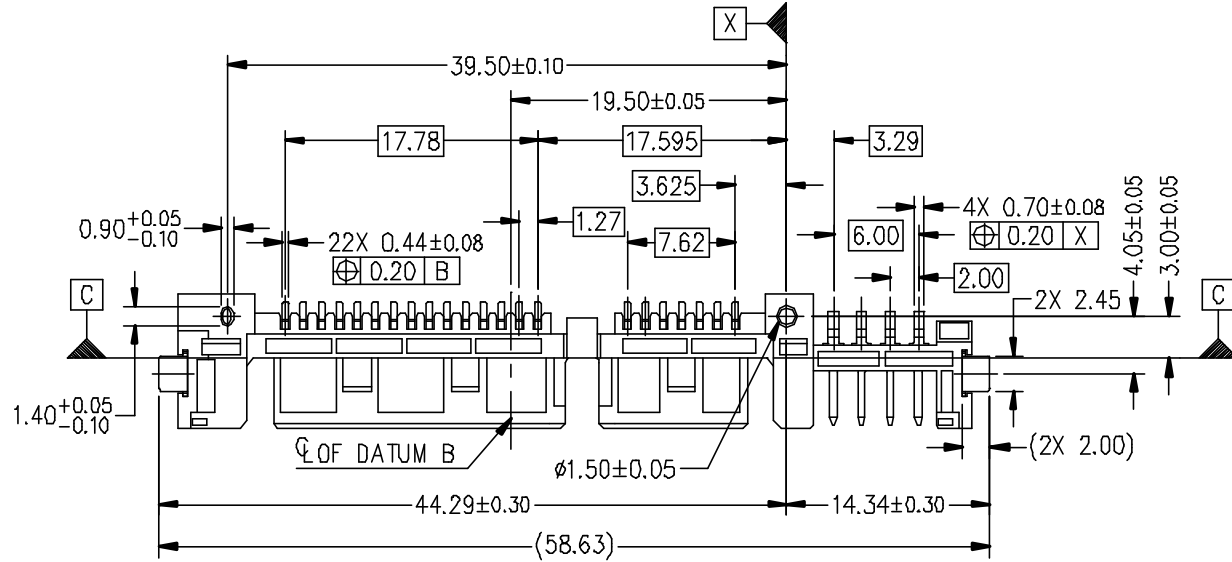


This document is the property of and embodies CONFIDENTIAL and proprietary information of FCI. No part of this information, shown on this drawing, may be used in any way or disclosed to others without the written consent of FCI. Copyright FCI.

FCI CONFIDENTIAL

PART NUMBER
10092193-00XXLF



SECTION E-E
(SCALE 4 : 1)

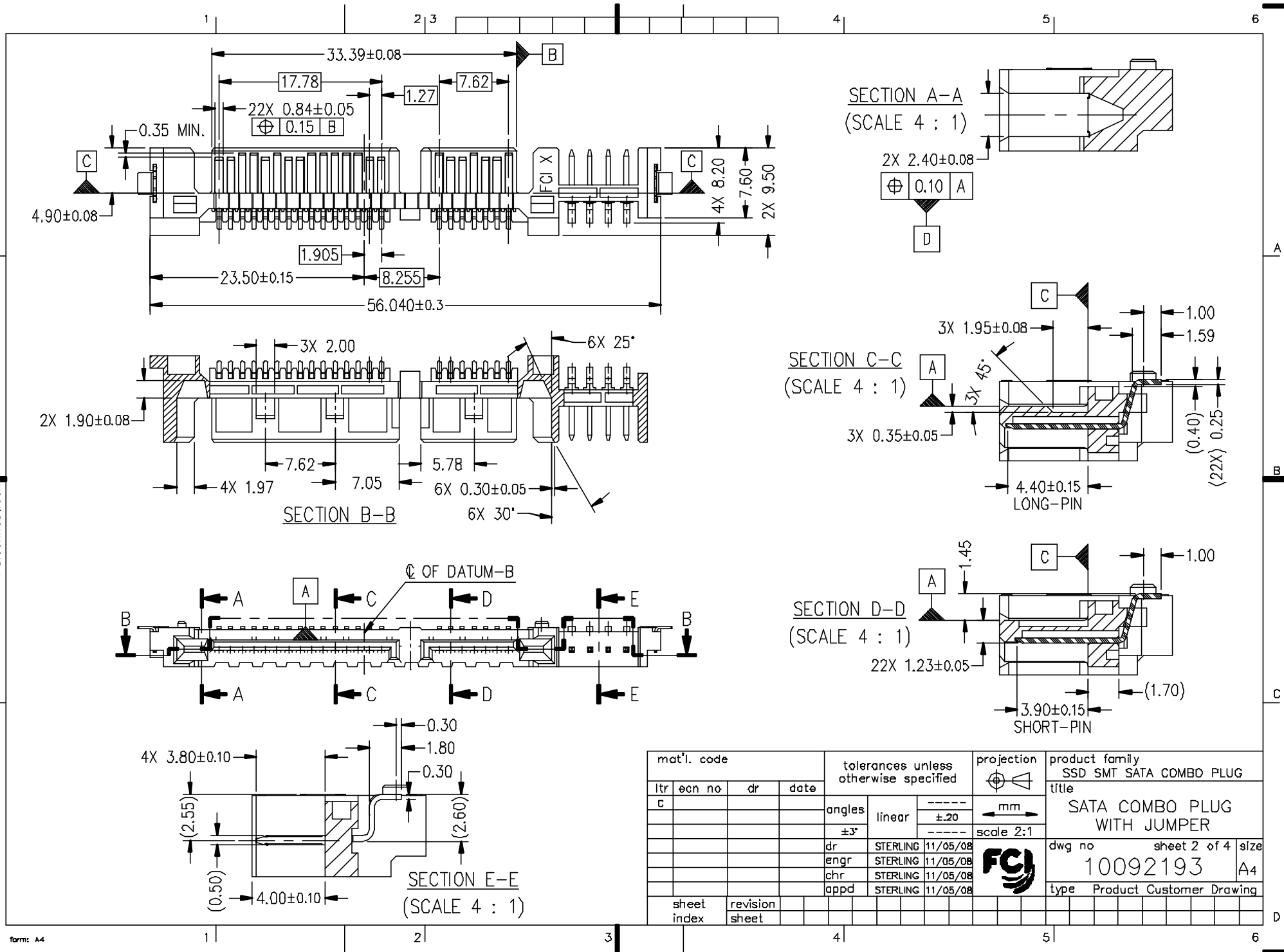
| | | | | | | | | | |
|-------------|-------------|----------|--------|---------------------------------------|----------|-----------|-------------------------------|----------------|--|
| mat'l. code | | | | tolerances unless otherwise specified | | | projection | product family | |
| ltr | ecn no | dr | date | angles | linear | mm | SSD SMT SATA COMBO PLUG | | |
| A | SD9-0260 | SLLIM | 090819 | | | | title | | |
| B | SD9-0325 | SLLIM | 091021 | ±3° | ----- | scale 2:1 | SATA COMBO PLUG WITH JUMPER | | |
| C | ELX-S-15978 | SLLIM | 130930 | | | | title | | |
| | | | | dr | STERLING | 11/05/08 | dwg no | | |
| | | | | enr | STERLING | 11/05/08 | sheet 1 of 4 | | |
| | | | | chr | STERLING | 11/05/08 | size | | |
| | | | | appd | STERLING | 11/05/08 | 10092193 | | |
| sheet index | | revision | c | c | c | c | type Product Customer Drawing | | |
| | | sheet | 1 | 2 | 3 | 4 | | | |

This document is the property of and embodies CONFIDENTIAL and proprietary information of FCI. No part of the information shown on this drawing may be used in any way or disclosed to others without the written consent of FCI. Copyright FCI.

FCI CONFIDENTIAL



FCIconnect.com



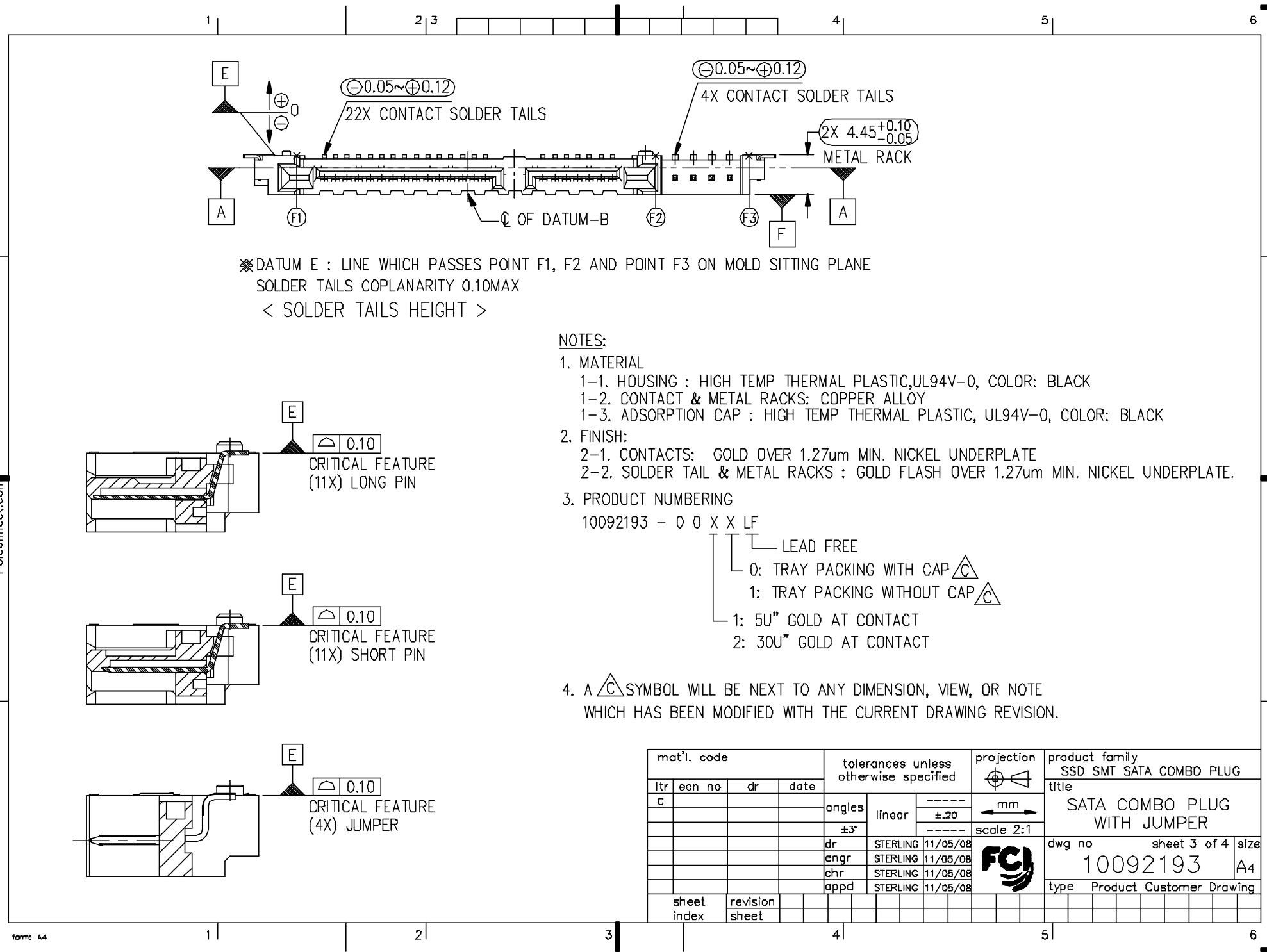
| | | | | | | | | | |
|-------------|--------|----------------|----------|---------------------------------------|--------|-----------|-------------------------------|----------------|--|
| mat'l. code | | | | tolerances unless otherwise specified | | | projection | product family | |
| ltr | ecn no | dr | date | angles | linear | mm | SSD SMT SATA COMBO PLUG | | |
| c | | | | | | | ±.20 | title | |
| | | | | ±3° | | scale 2:1 | SATA COMBO PLUG WITH JUMPER | | |
| | | dr | STERLING | 11/05/08 | | | dwg no | sheet 2 of 4 | |
| | | enr | STERLING | 11/05/08 | | | 10092193 | size | |
| | | chr | STERLING | 11/05/08 | | | | A4 | |
| | | appd | STERLING | 11/05/08 | | | type Product Customer Drawing | | |
| sheet index | | revision sheet | | | | | | | |

This document is the property of and embodies CONFIDENTIAL and
 exact information of FCJ. No part of the information shown
 on this document may be used in any way or disclosed to others
 without the written consent of FCJ.
 Copyright FCJ.

FCJ CONFIDENTIAL



FCconnect.com



※ DATUM E : LINE WHICH PASSES POINT F1, F2 AND POINT F3 ON MOLD SITTING PLANE
 SOLDER TAILS COPLANARITY 0.10MAX
 < SOLDER TAILS HEIGHT >

NOTES:

1. MATERIAL
 - 1-1. HOUSING : HIGH TEMP THERMAL PLASTIC, UL94V-0, COLOR: BLACK
 - 1-2. CONTACT & METAL RACKS: COPPER ALLØY
 - 1-3. ADSORPTION CAP : HIGH TEMP THERMAL PLASTIC, UL94V-0, COLOR: BLACK
2. FINISH:
 - 2-1. CONTACTS: GOLD OVER 1.27µm MIN. NICKEL UNDERPLATE
 - 2-2. SOLDER TAIL & METAL RACKS : GOLD FLASH OVER 1.27µm MIN. NICKEL UNDERPLATE.
3. PRODUCT NUMBERING
 - 10092193 - 0 0 X X LF

- LEAD FREE
- 0: TRAY PACKING WITH CAP
- 1: TRAY PACKING WITHOUT CAP
- 1: 5U" GOLD AT CONTACT
- 2: 30U" GOLD AT CONTACT

4. A SYMBOL WILL BE NEXT TO ANY DIMENSION, VIEW, OR NOTE WHICH HAS BEEN MODIFIED WITH THE CURRENT DRAWING REVISION.

| | | | | | | | | | |
|-------------|--------|----------------|------|---------------------------------------|----------|------------|---|--------------------------|--|
| mat'l. code | | | | tolerances unless otherwise specified | | projection | product family SSD SMT SATA COMBO PLUG | | |
| ltr | ecn no | dr | date | angles | linear | | title | | |
| c | | | | ±3° | ±.20 | | SATA COMBO PLUG WITH JUMPER | | |
| | | | | dr | STERLING | 11/05/08 | scale 2:1 | | |
| | | | | enr | STERLING | 11/05/08 | dwg no | | |
| | | | | chr | STERLING | 11/05/08 | sheet 3 of 4 | | |
| | | | | appd | STERLING | 11/05/08 | size | | |
| sheet index | | revision sheet | | | | | | 10092193 | |
| | | | | | | type | | Product Customer Drawing | |

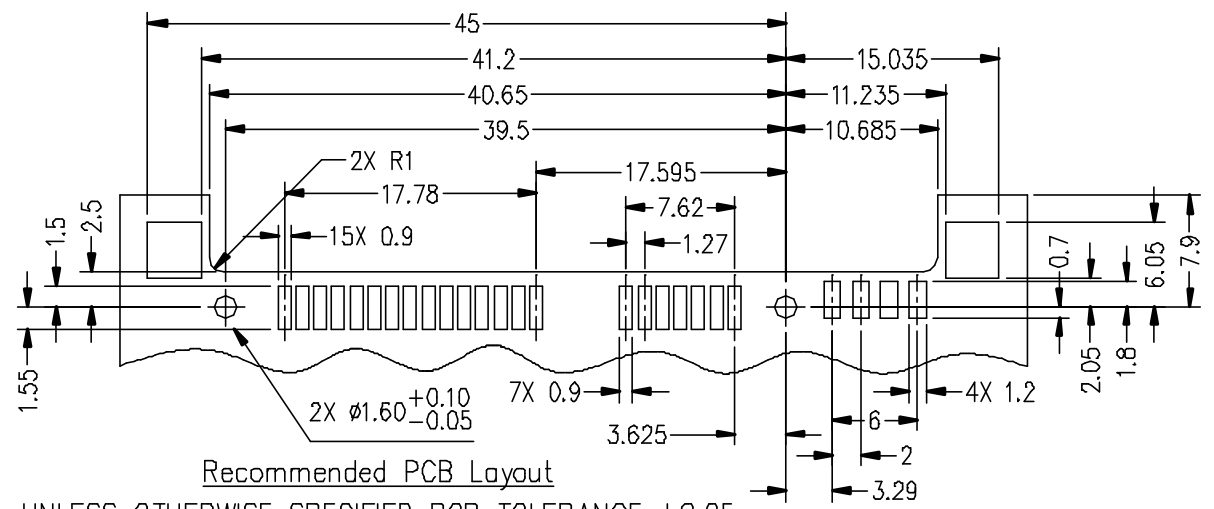
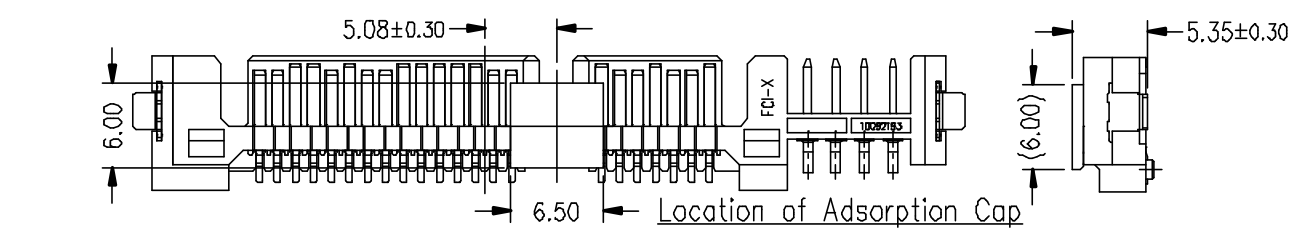
This document is the property of and embodies CONFIDENTIAL and proprietary information of FCJ. No part of this information shown on this drawing may be used in any way or disclosed to others without the written consent of FCJ. Copyright FCJ.

FCJ CONFIDENTIAL

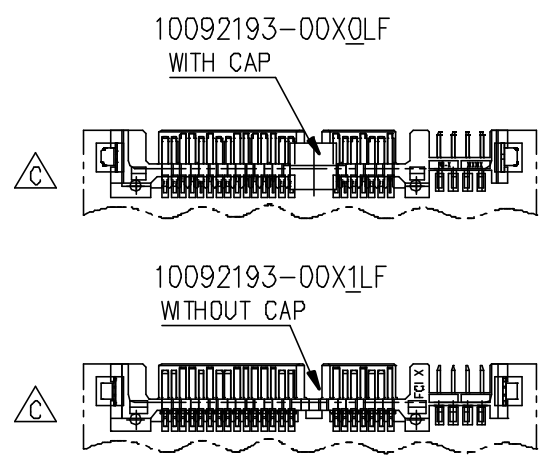


FCconnect.com

1 | 2 | 3 | 4 | 5 | 6



Recommended PCB Layout
 UNLESS OTHERWISE SPECIFIED PCB TOLERANCE ±0.05



| | | | | | | | | | |
|-------------|--------|----------------|------|---------------------------------------|----------|-----------|-------------------------------|----------------|-------|
| mat'l. code | | | | tolerances unless otherwise specified | | | projection | product family | |
| ltr | ecn no | dr | date | angles | linear | mm | SSD SMT SATA COMBO PLUG | | |
| c | | | | | | | ±3° | ±.20 | title |
| | | | | | | scale 2:1 | SATA COMBO PLUG WITH JUMPER | | |
| | | | | dr | STERLING | 11/05/08 | dwg no | | |
| | | | | enr | STERLING | 11/05/08 | sheet 4 of 4 | | |
| | | | | chr | STERLING | 11/05/08 | size | | |
| | | | | appd | STERLING | 11/05/08 | A4 | | |
| sheet index | | revision sheet | | | | | type Product Customer Drawing | | |

form: A4 | 1 | 2 | 3 | 4 | 5 | 6

Looking for pricing, stock, or lifecycle information?

Click below to explore more details on WIN SOURCE:

 [View 10092193-0021LF on WIN SOURCE](#)

 [Amphenol Information](#)

Optimize Your Supply Chain with WIN SOURCE Solutions

-  Global Sourcing Solution
-  Obsolete Management
-  Cost Control Management
-  Shortage Management
-  Alternative Solution
-  Excess Inventory Management