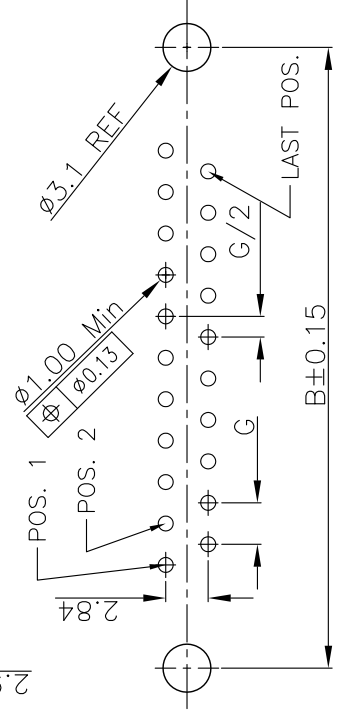
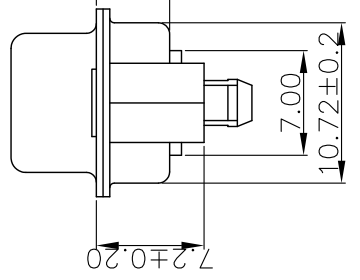
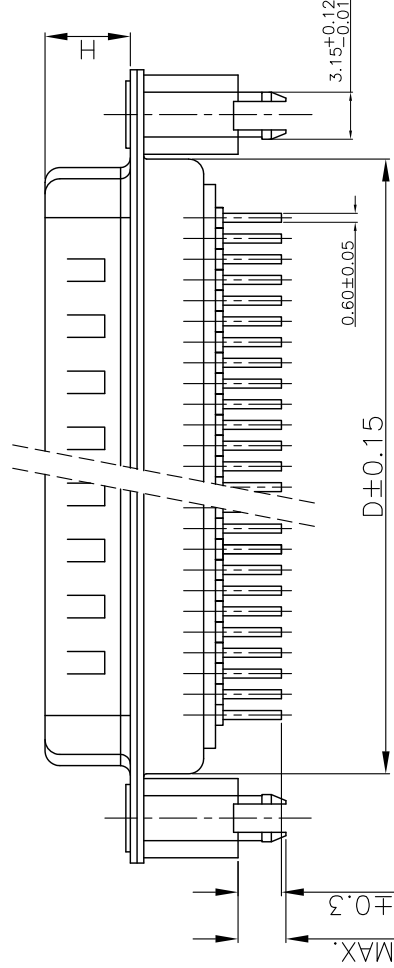
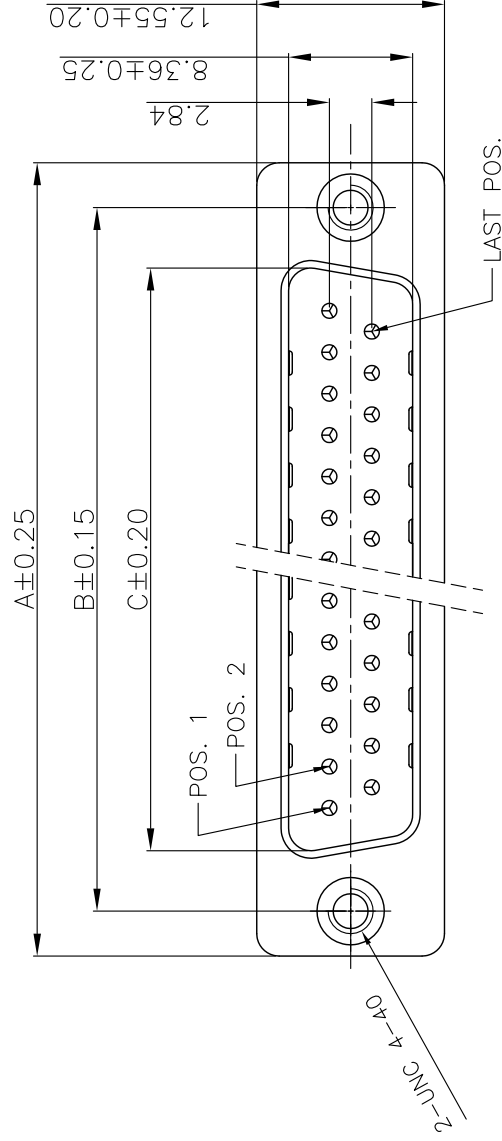




**THE DATASHEET OF
10090096-P374VLF**



1 | 2



P.C.B LAYOUT
t: 1.6±0.1mm

1 | 2

REMARK:
1.CHARACTERISTICS:
RATED VOLTAGE:
RATED CURRENT:
CONTACT RESIST/
INSULATION RESI/
DIELECTRIC STRE/
OPERATING TEMP/
INSERTION/EXTRA
MATING/UNMATING

2.MATERIAL:
INSULATORS: GLA
CONTACTS: COPP

SHELL: STEEL,100
500
CLINCH NUT : COP

3. PART NUMBER DESC

Tous droits strictement reserves. Reproduction ou communication a des tiers interdite sous quelque forme que ce soit sans autorisation écrite du propriétaire. Propriete de c FCI. Droits de reproduction FCI.



All rights strictly reserved. Reproduction or issue to third parties in any form whatever is not permitted without written authority from the proprietor. Property of FCI. Copyright FCI.

mat'i. code		tolerances unless otherwise specifie	
ltr	ecn no	dr	ddate
A	T09-1033	J.H	3/12/09
B	T09-1044	J.H	4/2/09
C	ELX-H-011675	P.K	18/05/12
D	ELX-I-15500	A.B	2013/08/21
E	ELX-I-16775	A.B	2014/01/21
		chr	JASON HSU 3/201
		appd	ALIAS BABU 201
			MITHUN PAUL 201
			BIJUK.PAUL 201
sheet index	revision	E	E
	sheet	1	2

ACAD

PDS: Rev

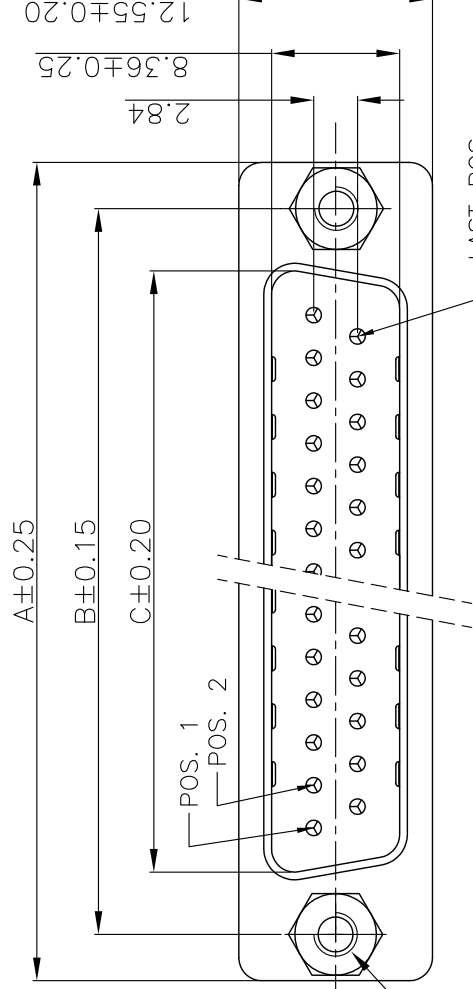
1 | 2

REMARK:
 1.CHARACTERISTICS:
 RATED VOLTAGE:
 RATED CURRENT:
 CONTACT RESISTANCE:
 INSULATION RESISTANCE:
 DIELECTRIC STRENGTH:
 OPERATING TEMPERATURE:
 INSERTION/EXTRACTION:
 MATING/UNMATING:

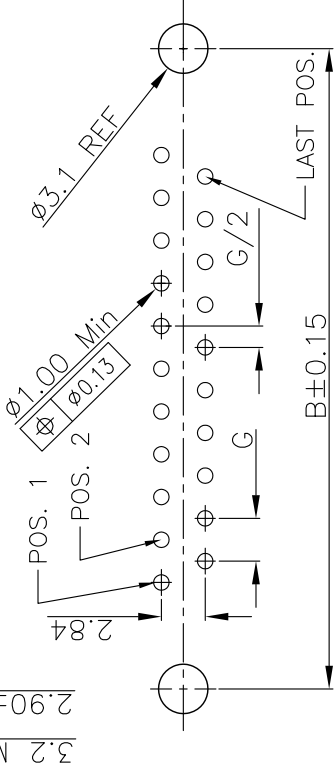
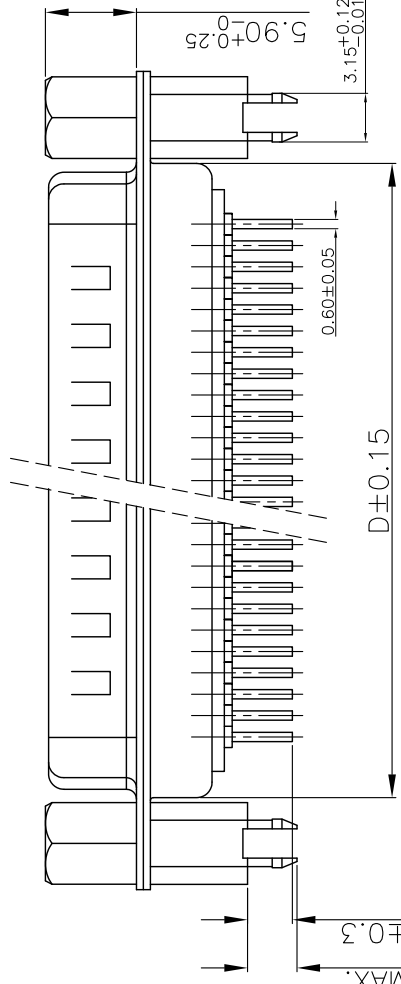
2.MATERIAL:
 INSULATORS: COPPER:
 CONTACTS: COPPER:

SHELL: STEEL,
 CLINCH NUT: COPPER:
 SCREW LOCK: COPPER:

3. PART NUMBER DESIGNATION:



2-UNC 4-40



P.C.B LAYOUT
 t: 1.6±0.1mm

1 | 2

mat'l. code		tolerances unless otherwise specified	
ltr	ecn no	linear	angles
E		.X ± 0	0° ±2°
		.XX ± 0	
		.XXX ± 0	
	dr	JASON HSU 6/201	
	engr	ALIAS BABU 201	
	chr	MITHUN PAUL 201	
	appd	BIJU.K.PAUL 201	
sheet index	revision		
	sheet		

ACAD

PDS: Rev



Tous droits strictement reserves. Reproduction ou communication a des tiers interdite sous quelque forme que ce soit sans autorisation écrite du propriétaire. Propriete de c FCI. Droits de reproduction FCI.



All rights strictly reserved. Reproduction or issue to third parties in any form whatever is not permitted without written authority from the proprietor. Property of FCI. Copyright FCI.

Looking for pricing, stock, or lifecycle information?

Click below to explore more details on WIN SOURCE:

-  [View 10090096-P374VLF on WIN SOURCE](#)
-  [Amphenol Information](#)

Optimize Your Supply Chain with WIN SOURCE Solutions

-  Global Sourcing Solution
-  Obsolete Management
-  Cost Control Management
-  Shortage Management
-  Alternative Solution
-  Excess Inventory Management