



THE DATASHEET OF U5125



Sealing boots

For toggle or pushbutton switches



DISTINCTIVE FEATURES

- Prevent dust, sand and water from getting into switches.
- On toggle versions, also prevent ice from blocking lever action
- Compatible with front sealing options (K and X408).
- Available in a wide range of colors.
- When necessary, a sealing ring or washer is supplied with the boot.



ENVIRONMENTAL SPECIFICATIONS

- Operating temperature :
 - neoprene boots : -20 °C to +50 °C (-4 °F to 122 °F)
 - silicone boots : -40 °C to + 85 °C (-40 °F to +185 °F)



MATERIALS

- Boot : neoprene or silicone (see comparative advantages below)
- Nut : brass, nickel plated or black

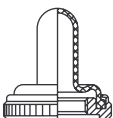
COMPARATIVE ADVANTAGES	TEMPERATURE RANGE		ELASTICITY	MECHANICAL RESISTANCE
	LOW	HIGH		
Silicone	++	++	++	-
Neoprene	-	+	-	++

++ : excellent, + : good, - : poor

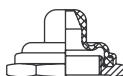
Lack of elasticity impacts the actuating force thus neoprene boots are not advised with maintained positions functions.



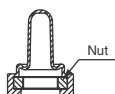
DIFFERENT TYPES OF BOOTS



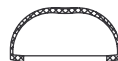
Full-toggle (standard) *



Half-toggle *



Two-part (no metal parts accessible) *



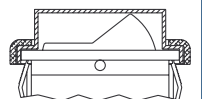
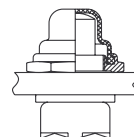
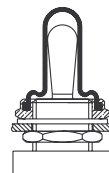
For double sealing *

* Color options available

The company reserves the right to change specifications without notice.



EXAMPLES OF MOUNTING



ABOUT THIS SERIES

- These sealing boots are designed to fit standard actuators (levers, pushbuttons, ...). Please contact us for specific actuators to confirm compatibility
- Sealing boots are not designed to be used with locking levers (toggle switches)

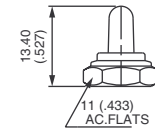
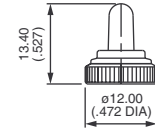
Sealing boots

For toggle switches

FOR BUSHING Ø 6 X 0.75 (.236 X 0.75)
55500 SERIES



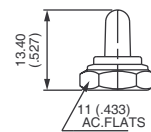
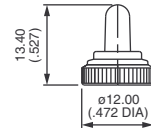
NUT	FULL-TOGGLE SILICONE BOOTS			
	Black	Red	Green	White
Knurled Nickel plated	N32161005 (U1341)	N32162005 (U1341-6)	N3216V005 (U1341-3)	N3216B005 (U1341-7)
Knurled Black	N32161002 (U1343)	-	-	-
Hex Nickel plated	N32121005 (U1302)	N32122005 (U1302-6)	N3212V005 (U1302-3)	N3212B005 (U1302-7)
Hex Black	N32121002 (U1304)	-	-	-



FOR BUSHING Ø 6.35-40 NS (1/4-40 UNS)
55600, 5000 AND 11000 SERIES



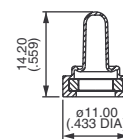
NUT	FULL-TOGGLE SILICONE BOOTS			
	Black	Red	Green	White
Knurled Nickel plated	N33161005 (U1331)	N33162005 (U1331-6)	N3316V005 (U1331-3)	N3316B005 (U1331-7)
Knurled Black	N33161002 (U1333)	-	-	-
Hex Nickel plated	N33121005 (U1229)	N33122005 (U1229-6)	N3312V005 (U1229-3)	N3312B005 (U1229-7)
Hex Black	N33121002 (U1231)	-	-	-



FOR BUSHING Ø 6.35-40 NS (1/4-40 UNS)
5000 AND 11000 SERIES



BOOTS SUPPLIED AS 2 SEPARATE PARTS				
NEOPRENE	SILICONE			
Black	Red	Green	White	
N33136119 (U5149)	N33137119 (U5149-6)	N3313V119 (U5149-3)	N3313B119 (U5149-7)	

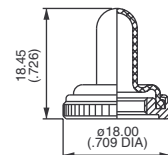


Once the boot is mounted onto the panel, no switch metal part is accessible any more.

FOR BUSHING Ø 10 X 0.75 (.393 X 0.75)
10600 SERIES



KNURLED NUT	FULL-TOGGLE SILICONE BOOTS			
	Black	Red	Green	White
Nickel plated	N34151005 (U1612)	N34152005 (U1612-6)	N3415V005 (U1612-3)	N3415B005 (U1612-7)
Black	N34151002 (U1614)	-	-	-



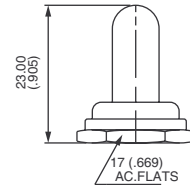
Sealing boots

For toggle switches

FOR BUSHING Ø 11.9-32 NS (15/32-32 UNS)
12000, 5000M, 3500 AND 6000 SERIES



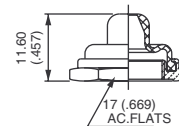
HEX NUT	FULL-TOGGLE SILICONE BOOTS			
	Black	Red	Green	White
Nickel plated	N35111005 (U1031)	N35112005 (U1031-6)	N3511V005 (U1031-3)	N3511B005 (U1031-7)
Black	N35111002 (U1024)	-	-	-



FOR BUSHING Ø 11.9-32 NS (15/32-32 UNS)
12000, 3500 AND 6000 SERIES



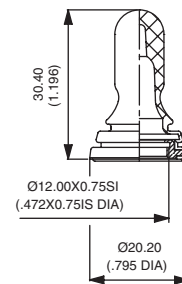
HEX NUT	HALF-TOGGLE SILICONE BOOTS			
	Black	Red	Green	White
Nickel plated	N35111015 (U1600)	N35112015 (U1600-6)	N3511V015 (U1600-3)	N3511B015 (U1600-7)
Black	N35111012 (U1602)	-	-	-



FOR BUSHING Ø12 X 0.75 SI (.472X.075 IS)
12000, 3500, 3600 AND 600 SERIES



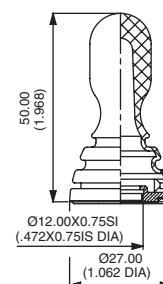
FULL-TOGGLE BLACK NEOPRENE BOOT	
N36346009 (U2252)	



FOR BUSHING Ø12 X 0.75 SI (.472X.075 IS)
600 SERIES WITH -5 LONG LEVER



FULL-TOGGLE BOOT	
BLACK NEOPRENE	BLACK SILICONE
N36346209 (U2197)	N36343209 (U3093)



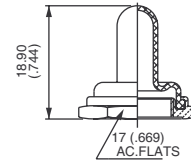
Sealing boots

For toggle or pushbutton switches

FOR BUSHING Ø12 X 0.75 SI (.472X.075 IS)
4450, 4650 AND 1600 SERIES



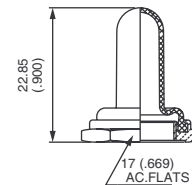
HEX NUT	FULL-TOGGLE BLACK NEOPRENE BOOTS
Nickel plated	N36116045 (U09)
Black	N36116042 (U223)



FOR BUSHING Ø 12 X 0.75 SI (.472X.075 IS)
600H, 660, 1000, 1500 AND 3600



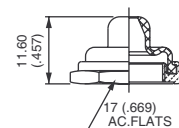
HEX NUT	FULL-TOGGLE SILICONE BOOTS			
	Black	Red	Green	White
Nickel plated	N36111005 (U1565)	N36112005 (U1565-6)	N3611V005 (U1565-3)	N3611B005 (U1565-7)
Black	N36111002 (U1567)	-	-	-
FULL-TOGGLE BLACK NEOPRENE BOOTS				
Nickel plated	N36116005 (U851)			
Black	N36116002 (U853)			



FOR BUSHING Ø 12 X 0.75 SI (.472X.075 IS)
600H, 660, 1000 AND 3600 SERIES



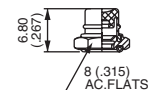
HEX NUT	HALF-TOGGLE SILICONE BOOTS			
	Black	Red	Green	White
Nickel plated	N36111015 (U1151)	N36112015 (U1151-6)	N3611V015 (U1151-3)	N3611B015 (U1151-7)
Black	N36111012 (U1153)	-	-	-
HALF-TOGGLE BLACK NEOPRENE BOOTS				
Nickel plated	N36116015 (U598)			
Black	N36116012 (U600)			



FOR BUSHING Ø 4 X 0.70 (.157 X 0.70)
9500 SERIES



HEX NUT	PUSHBUTTON SILICONE BOOTS			
	Black	Red	Green	White
Nickel plated	N31221005 (U1829)	N31222005 (U1829-6)	N3122V005 (U1829-3)	N3122B005 (U1829-7)
Black	N31221002 (U1831)	-	-	-



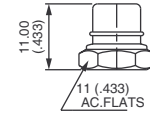
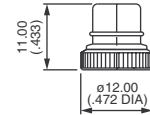
Sealing boots

For toggle or pushbutton switches

FOR BUSHING Ø 6.35-40 NS (1/4-40 UNS)
18000, 9000 AND 13000 SERIES



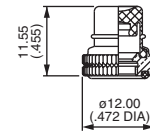
NUT	PUSHBUTTON SILICONE BOOTS			
	Black	Red	Green	White
Knurled Nickel plated	N33261005 (U1401)	N33262005 (U1401-6)	N3326V005 (U1401-3)	N3326B005 (U1401-7)
Knurled Black	N33261002 (U1403)	-	-	-
Hex Nickel plated	N33221005 (U1318)	N33222005 (U1318-6)	N3322V005 (U1318-3)	N3322B005 (U1318-7)
Hex Black	N33221002 (U1320)	-	-	-



FOR BUSHING Ø 6.35-40 NS (1/4-40 UNS)
8000 SERIES



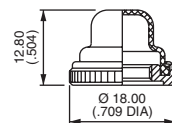
KNURLED NUT	PUSHBUTTON SILICONE BOOTS			
	Black	Red	Green	White
Nickel plated	N33261125 (U4301)	N33262125 (U4301-6)	N3326V125 (U4301-3)	N3326B125 (U4301-7)



FOR BUSHING Ø 10 X 0.75 (.393 X 0.75)
10400 SERIES



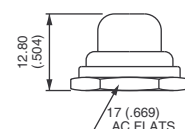
KNURLED NUT	PUSHBUTTON SILICONE BOOTS			
	Black	Red	Green	White
Nickel plated	N34251005 (U1624)	N34252005 (U1624-6)	N3425V005 (U1624-3)	N3425B005 (U1624-7)
Black	N34251002 (U1626)	-	-	-



FOR BUSHING Ø 11.9-32 NS (15/32-32 UNS)
13000X778, 13000X768 AND 8000-6X934 SERIES



HEX NUT	PUSHBUTTON SILICONE BOOTS			
	Black	Red	Green	White
Nickel plated	N35211005 (U589)	N35212005 (U589-6)	N3521V005 (U589-3)	N3521B005 (U589-7)
Black	N35211002 (U590)	-	-	-



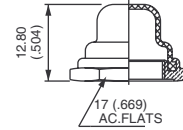
Sealing boots

For toggle or pushbutton switches

FOR BUSHING Ø 12 X 0.75 SI (.472X.075 IS)
1200, 4700 AND 4800 SERIES



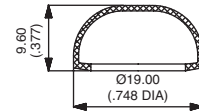
HEX NUT	PUSHBUTTON SILICONE BOOTS			
	Black	Red	Green	White
Nickel plated	N36211005 (U1654)	N36212005 (U1654-6)	N3621V005 (U1654-3)	N3621B005 (U1654-7)
Black	N36211002 (U1656)	-	-	-
PUSHBUTTON BLACK NEOPRENE BOOTS				
Nickel plated	N36216005 (U31)			
Black	N36216002 (U225)			
Chrome plated	N36216001 (U224)			



FOR DOUBLE SEALING ON
IC, IHS, IL, IM, IP AND IB-IS SERIES



SILICONE BOOTS	
Transparent	U5125
Blue	U5125-1
Black	U5125-2
Red	U5125-6

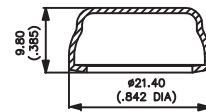


Operating temperature : -40 °C to +85 °C (-40 °F to +185 °F)
The flat seal or O-Ring supplied with the switch should not be used with this boot.

FOR DOUBLE SEALING ON IR SERIES



SILICONE BOOTS	
Transparent	U7125
Blue	U7125-1
Black	U7125-2
Red	U7125-6

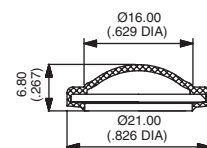


Operating temperature : -40 °C to +85 °C (-40 °F to +185 °F)
The flat seal or O-Ring supplied with the switch should not be used with this boot.

FOR DOUBLE SEALING ON IA SERIES



SILICONE BOOTS	
Black	U6602
Green	U6603
Yellow	U6605
Red	U6606



Sealing boots

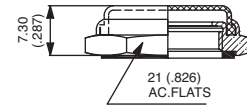
For toggle or pushbutton switches

FOR IZ SERIES



HEX NUT	TRANSPARENT SILICONE BOOTS
Nickel plated	N3822D005

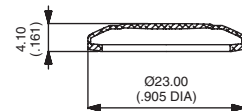
Panel thickness :
For models IZP and IZN, panel thickness should be 4 mm (.157).
No restriction for IZM models.



FOR AV SERIES (MODELS WITH Ø 19 MM BUSHING)



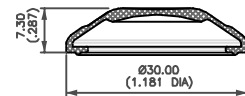
SILICONE BOOTS	
Black	U2187-2
Green	U2187-3
Grey	U2187-4
Yellow	U2187-5
Red	U2187-6
White	U2187-7
Transparent	U2187-8



FOR FP 24 MM SERIES



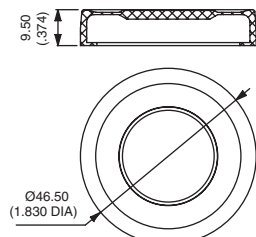
SILICONE BOOTS	
Black	FP0292
Red	FP0296
Transparent	FP0298



FOR LPI SERIES



SILICONE BOOTS	
Black	U3082
Transparent	U3088



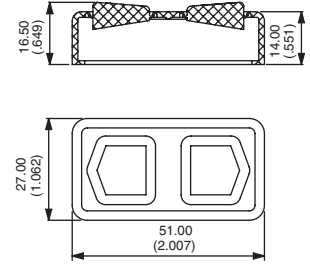
Sealing boots

For toggle or pushbutton switches

FOR KG SERIES



BLACK SILICONE BOOT
U3084



Also available with pad-printed symbols : on request.

Looking for pricing, stock, or lifecycle information?

Click below to explore more details on WIN SOURCE:

- [View U5125 on WIN SOURCE](#)
- [Apem Inc. Information](#)

Optimize Your Supply Chain with WIN SOURCE Solutions

- ✓ Global Sourcing Solution
- ✓ Obsolete Management
- ✓ Cost Control Management
- ✓ Shortage Management
- ✓ Alternative Solution
- ✓ Excess Inventory Management