

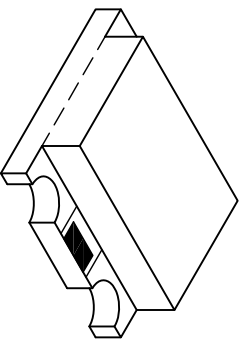
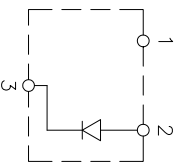


**THE DATASHEET OF  
SML-LX15YC-TR**



R0.35 [R0,014]  
(3 PLS.)

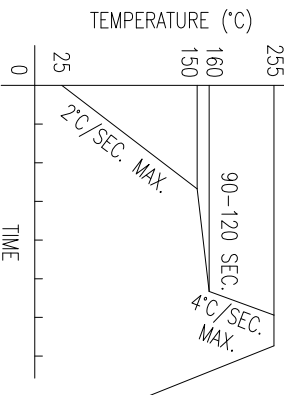
POLARITY MARK



PART NUMBER	SML-LX15YC-TR	REV.	F
DATE	E.C.N. #10967.	E.C.N. #11010.	A
03.14.03			
07.03.03	E.C.N. #11010.	E.C.N. #11148.	B
11.30.05	E.C.N. #11148.	E.C.N. #11361.	C
11.28.06	E.C.N. #11361.	E.C.N. #11501.	D
05.22.08	E.C.N. #11501.	E.C.N. #10BRDR. & REDRAWN.	E
03.04.14	E.C.N. #10BRDR. & REDRAWN.		F

ELECTRO-OPTICAL CHARACTERISTICS  $T_A=25^{\circ}\text{C}$   $I_f=20\text{mA}$

PARAMETER	MIN	TYP	MAX	UNITS	TEST COND
PEAK WAVELENGTH		585		nm	
FORWARD VOLTAGE		2.1	2.8	V <sub>f</sub>	$I_f=100\mu\text{A}$
REVERSE VOLTAGE		5.0		V <sub>r</sub>	
AXIAL INTENSITY		10		mcd	$I_f=20\text{mA}$
VIEWING ANGLE		140		2x theta	
EMITTED COLOR:		YELLOW			
EPOXY LENS FINISH:		WATER CLEAR			



LEAD FREE REFLOW PROFILE  
10 SEC. MAX.

LIMITS OF SAFE OPERATION AT 25°C

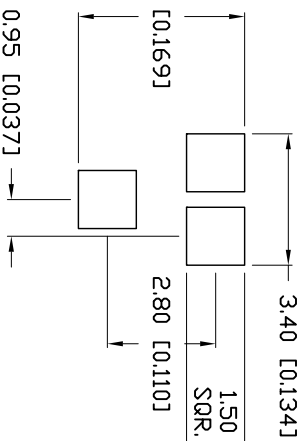
PARAMETER	MAX	UNITS
PEAK FORWARD CURRENT*	160	mA
STEADY CURRENT	30	mA
POWER DISSIPATION	100	mW
DERATE FROM 25°C	-1.2	mW/°C
OPERATING, STORAGE TEMP.	-40 TO +85	°C

\*  $t < 10\mu\text{s}$

NOTES:

1. THE POLARITY MARK IS ORIENTED TOWARDS THE TAPE SPROCKET HOLE.

CAUTION: MOISTURE SENSITIVE DEVICE  
PER JEDEC LEVEL 3 STANDARDS



TOTAL TIME ABOVE 220°C IS 60 SECONDS MAX.  
RECOMMENDED PAD LAYOUT

0.95 [0.037]

4.30 [0.169]

2.80 [0.110]

1.50 [0.059]  
SQR. 3 PLS.

3.40 [0.134]

1.75 [0.069]

3.50 [0.138]

SS [ø0.061]

1.75 [0.069]

3.50 [0.138]

00 [0.157]

X.X±1 (±0.039), X.X=±0.5 (±0.020), XXX=±0.25 (±0.010), XXXX=±0.127 (±0.005), LEAD SIZE=±0.05 (±0.002), LEAD LENGTH=±0.75 (±0.030), MIN.=<sup>+0.00</sup>DECIMAL PRECISION MAX.=<sup>+0.00</sup>DECIMAL PRECISION

SOT-23 REPLACEMENT, SURFACE MOUNT LED, 585nm YELLOW LED, WATER CLEAR LENS, TAPE AND REEL.

\*\*THE SPECIFICATIONS MAY CHANGE AT ANY TIME WITHOUT NOTICE DUE TO NEW MATERIALS OR PRODUCT IMPROVEMENT.\*\*

CONDENSATIONAL INFORMATION  
THE INFORMATION CONTAINED IN THIS DOCUMENT IS THE PROPERTY OF LUMEX INC. EXCEPT AS SPECIFICALLY AUTHORIZED IN WRITING BY LUMEX INC., THE HOLDER OF THIS DOCUMENT SHALL KEEP ALL INFORMATION CONTAINED HEREIN CONFIDENTIAL AND SHALL PROTECT SAME IN WHOLE OR IN PART FROM DISCLOSURE AND DISSEMINATION TO ALL THIRD PARTIES.

UNCONTROLLED DOCUMENT

DATE:	03.04.14	DRAWN BY:	MA
PAGE:	1 OF 1	CHKD BY:	KF
SCALE:	NTS	APRVD BY:	KF
UNIT:	mm [INCH]		

REV. A/E  
MAY 11, 2018-4900  
8002783686  
31512152  
LUMEX.COM  
LUMEX PHOTONICS GROUP

## Looking for pricing, stock, or lifecycle information?

Click below to explore more details on WIN SOURCE:

- ⊖ [View SML-LX15YC-TR on WIN SOURCE](#)
- ⊖ [Lumex Opto/Components Inc. Information](#)

## Optimize Your Supply Chain with WIN SOURCE Solutions

- ✓ Global Sourcing Solution
- ✓ Obsolete Management
- ✓ Cost Control Management
- ✓ Shortage Management
- ✓ Alternative Solution
- ✓ Excess Inventory Management