



**THE DATASHEET OF  
SMB7H-J-P-H-RA-TH1**



# 75 Ω SMB TO 4 GHz

## SMB Cable Connectors RF179



SERIES	END 1 CONNECTOR	END 2 CONNECTOR	OVERALL LENGTH
--------	-----------------	-----------------	----------------

**RF179**  
= RG 179 Cable

**-77SP1**  
= 75 Ω SMB Straight Plug

**-77RP1**  
= 75 Ω SMB Right-angle Plug

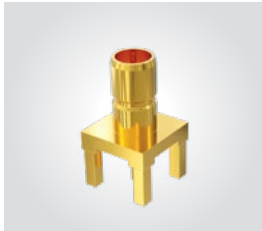
**-“XXXX”**  
= Overall Length in millimeters  
-0100 (100 mm) 3.94" minimum

### ALSO AVAILABLE

75 Ω: DIN 1.0/2.3, BNC, MCX, MMCX = RF179

## SMB Cable Connectors SMB7H-TH, SMB7H-EM

**Cable Mates:**  
RF179, GRF7H-C



SMB7H	GENDER	TYPE	PLATING	ORIENTATION	TERMINATION
-------	--------	------	---------	-------------	-------------

**-J**  
= Jack

**-P**  
= PCB Mount

**-H**  
= 30 μ" (0.76 μm) Gold center contact,  
3 μ" (0.08 μm) Gold outer contact

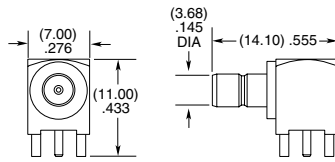
**-ST**  
= Straight

**-RA**  
= Right-angle

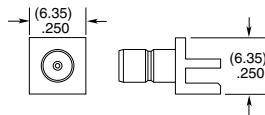
**-TH1**  
= Through-hole ((0.90 mm) .035" DIA Signal Pin)

**-TH2**  
= Through-hole ((0.51 mm) .020" DIA Signal Pin) (-ST only)

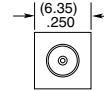
**-EM1**  
= Edge Mount (-ST only)



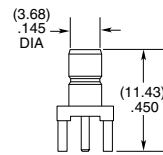
**-RA-TH1**



**-ST-EM1**



**-ST-TH1 & -ST-TH2**



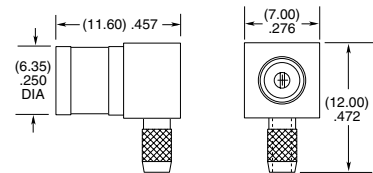
**Note:**  
Additional plating options available on Cable Assemblies, Cable Connectors and Board Connectors. Contact RFGroup@samtec.com

## SMB Cable Connectors SMB7H-CA

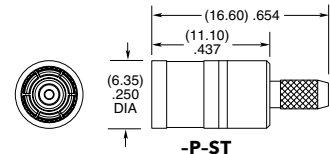


CONNECTORS FOR INDUSTRY STANDARD CABLES	
SMB7H-P-C-H-ST-CA3	RG 179 Cable
SMB7H-P-C-HF-RA-CA3	RG 179 Cable

P-C = Cable Plug  
H or HF = Plating (30 μ" Gold center contact, 3 μ" Gold outer contact)  
ST = Straight  
RA = Right-angle



**-P-RA**



**-P-ST**

Supplied with pins and ferrules.  
See website for dimensions

## Looking for pricing, stock, or lifecycle information?

Click below to explore more details on WIN SOURCE:

 [View SMB7H-J-P-H-RA-TH1 on WIN SOURCE](#)

 [Samtec Inc. Information](#)

## Optimize Your Supply Chain with WIN SOURCE Solutions

-  Global Sourcing Solution
-  Obsolete Management
-  Cost Control Management
-  Shortage Management
-  Alternative Solution
-  Excess Inventory Management