



THE DATASHEET OF RLP-290+



Surface Mount Low Pass Filter

RLP-290+

50Ω DC to 290 MHz

The Big Deal

- Low Insertion Loss (1.2 dB typical)
- Good VSWR (1.4:1 typical)
- High Rejection
- Very small size (0.35" x 0.35" x 0.10")



Generic photo used for illustration purposes only
CASE STYLE: GP731

Product Overview

The RLP-290+ is a Lowpass filter fabricated using SMT technology. Covering DC to 290 MHz, this model offers low passband insertion loss of 1.2 dB typical, good matching within the passband and high rejection. In addition it has repeatable performance across production lots and consistent performance across temperature.

Key Features

Feature	Advantages
Good VSWR, 1.4:1 typical in passband	This provides well matched input and output ports.
Sharp roll off shape factor, 1.2	Sharp shape factor helps in adjacent channel rejection and hence increased selectivity.
More than 40 dB rejection up to 950 MHz	This enables the filter to attenuate spurious signals and reject harmonics over a broad frequency band.
Small size, 0.35" x 0.35" x 0.10"	The surface mount package enables the RLP-290+ to be used in compact designs.
Shielded case	Reduced interference with and from the surrounding components.

Notes

- A. Performance and quality attributes and conditions not expressly stated in this specification document are intended to be excluded and do not form a part of this specification document.
B. Electrical specifications and performance data contained in this specification document are based on Mini-Circuit's applicable established test performance criteria and measurement instructions.
C. The parts covered by this specification document are subject to Mini-Circuits standard limited warranty and terms and conditions (collectively, "Standard Terms"); Purchasers of this part are entitled to the rights and benefits contained therein. For a full statement of the Standard Terms and the exclusive rights and remedies thereunder, please visit Mini-Circuits' website at www.minicircuits.com/MCLStore/terms.jsp



Surface Mount Low Pass Filter

RLP-290+

50Ω DC to 290 MHz



Generic photo used for illustration purposes only
CASE STYLE: GP731

Features

- High rejection
- Sharp insertion loss roll off
- Good VSWR, 1.4:1 typical in passband
- Aqueous washable

Applications

- TV Broad casting
- Wireless communications
- VHF/UHF receivers / transmitters
- Military

Electrical Specifications at 25°C

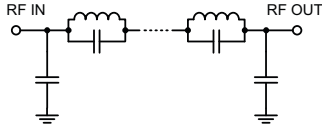
Parameter	F#	Frequency (MHz)	Min.	Typ.	Max.	Unit	
Pass Band	Insertion Loss	DC-F1	DC-290	—	1.2	1.8	dB
	Freq. Cut-Off	F2	310	—	3.0	—	dB
	VSWR	DC-F1	DC-290	—	1.4	1.9	:1
Stop Band	Rejection Loss	F3-F4	350-1600	20	26	—	dB
	VSWR	F3-F4	350-1600	—	12	—	:1

Maximum Ratings

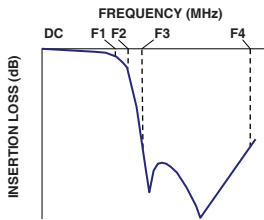
Operating Temperature	-40°C to 85°C
Storage Temperature	-55°C to 100°C
RF Power Input	0.5W max.

Permanent damage may occur if any of these limits are exceeded.

Functional Schematic



Typical Frequency Response

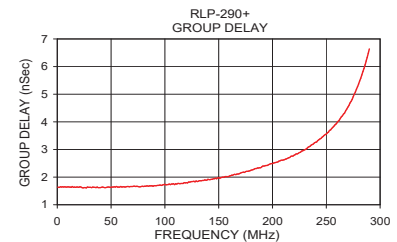
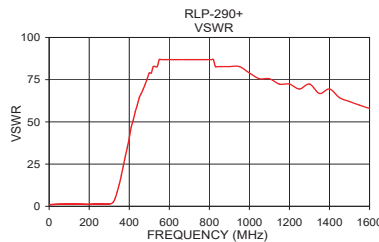
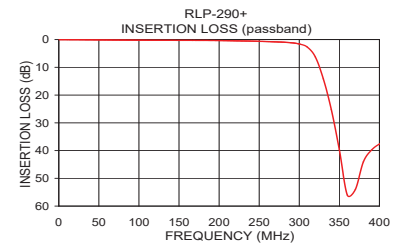
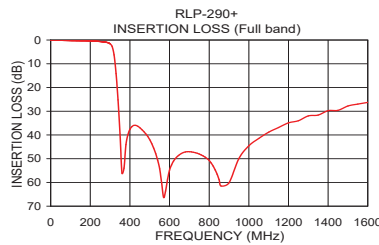


Typical Performance Data at 25°C

Frequency (MHz)	Insertion Loss (dB)	VSWR (:1)	Frequency (MHz)	Group Delay (nsec)
0.5	0.03	1.01	0.5	1.64
20.0	0.06	1.07	100.0	1.74
44.0	0.11	1.17	130.0	1.84
102.0	0.24	1.31	159.0	2.02
224.0	0.47	1.26	184.0	2.31
280.0	0.95	1.25	215.0	2.70
285.0	1.03	1.22	225.0	2.89
290.0	1.15	1.23	231.0	3.01
310.0	2.74	1.60	245.0	3.40
320.0	6.12	2.44	260.0	3.97
330.0	13.55	4.83	265.0	4.22
350.0	37.82	13.09	270.0	4.53
450.0	36.93	64.35	275.0	4.91
500.0	41.92	78.97	277.0	5.08
540.0	50.40	82.73	278.0	5.18
600.0	55.13	86.86	282.0	5.58
950.0	48.42	82.73	285.0	5.93
1000.0	43.62	78.97	286.0	6.06
1400.0	29.35	69.49	288.0	6.33
1600.0	26.12	57.91	290.0	6.64

+RoHS Compliant

The +Suffix identifies RoHS Compliance. See our web site for RoHS Compliance methodologies and qualifications



Notes

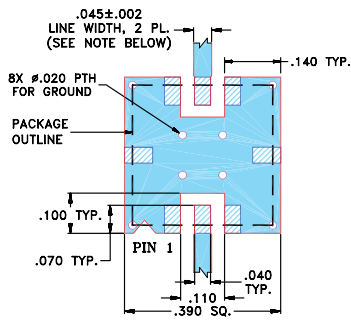
- Performance and quality attributes and conditions not expressly stated in this specification document are intended to be excluded and do not form a part of this specification document.
- Electrical specifications and performance data contained in this specification document are based on Mini-Circuit's applicable established test performance criteria and measurement instructions.
- The parts covered by this specification document are subject to Mini-Circuits standard limited warranty and terms and conditions (collectively, "Standard Terms"); Purchasers of this part are entitled to the rights and benefits contained therein. For a full statement of the Standard Terms and the exclusive rights and remedies thereunder, please visit Mini-Circuits' website at www.minicircuits.com/MCLStore/terms.jsp



Pad Connections

INPUT	2
OUTPUT	6
GROUND	1,3,4,5,7,8

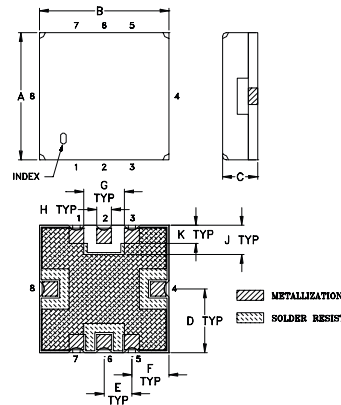
Demo Board MCL P/N: TB-332
Suggested PCB Layout (PL-176)



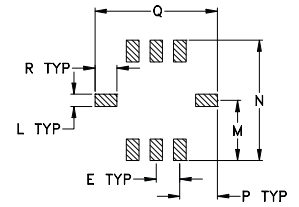
- NOTES:**
- TRACE WIDTH IS SHOWN FOR FR4 WITH DIELECTRIC THICKNESS .025" ± .002"; COPPER: 1/2 OZ. EACH SIDE. FOR OTHER MATERIALS TRACE WIDTH MAY NEED TO BE MODIFIED.
 - BOTTOM SIDE OF THE PCB IS CONTINUOUS GROUND PLANE.

- DENOTES PCB COPPER LAYOUT WITH SMOBC (SOLDER MASK OVER BARE COPPER)
- DENOTES COPPER LAND PATTERN FREE OF SOLDER MASK

Outline Drawing



PCB Land Pattern



Suggested Layout,
Tolerance to be within ±.002

Outline Dimensions (Inch / mm)

A	B	C	D	E	F	G	H	J
.350	.350	.100	.175	.075	.100	.110	.040	.080
8.89	8.89	2.54	4.45	1.91	2.54	2.79	1.02	2.03
K	L	M	N	P	Q	R	wt	
.050	.040	.195	.390	.120	.390	.070	grams	
1.27	1.02	4.95	9.91	3.05	9.91	1.78	0.25	

Note: Please refer to case style drawing for details



Notes

- Performance and quality attributes and conditions not expressly stated in this specification document are intended to be excluded and do not form a part of this specification document.
- Electrical specifications and performance data contained in this specification document are based on Mini-Circuit's applicable established test performance criteria and measurement instructions.
- The parts covered by this specification document are subject to Mini-Circuits standard limited warranty and terms and conditions (collectively, "Standard Terms"); Purchasers of this part are entitled to the rights and benefits contained therein. For a full statement of the Standard Terms and the exclusive rights and remedies thereunder, please visit Mini-Circuits' website at www.minicircuits.com/MCLStore/terms.jsp



Looking for pricing, stock, or lifecycle information?

Click below to explore more details on WIN SOURCE:

-  [View RLP-290+ on WIN SOURCE](#)
-  [Mini-Circuits Information](#)

Optimize Your Supply Chain with WIN SOURCE Solutions

-  Global Sourcing Solution
-  Obsolete Management
-  Cost Control Management
-  Shortage Management
-  Alternative Solution
-  Excess Inventory Management