



**THE DATASHEET OF**  
**095-850-222-048**

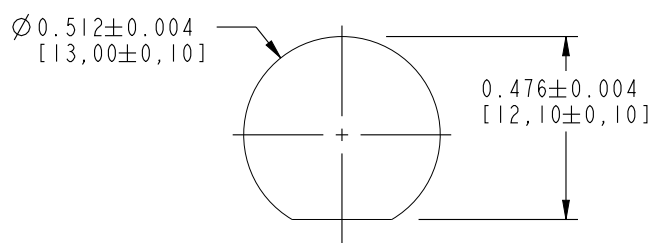


NOTES:

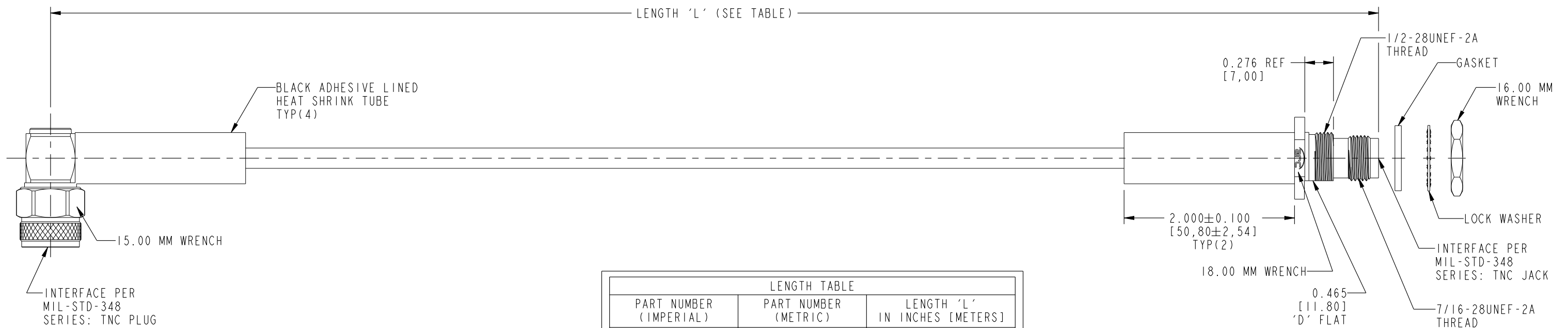
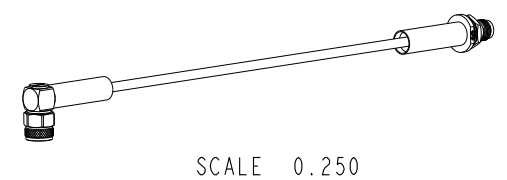
1. MATERIALS AND FINISHES:  
 TNC RA PLUG IP 67 - BRASS, NICKEL PLATING  
 TNC STR BHD JACK IP 67 - BRASS, NICKLE PLATING  
 CABLE - LMR 200
2. ELECTRICAL:  
 A. IMPEDANCE: 50 OHM
3. PACKAGING:  
 A. QUANTITY: SINGLE PACK  
 B. MARKING: BAG TO BE MARKED  
 "AMPHENOL RF, 95-850-222-XXX AND DATE CODE"

THIRD ANGLE PROJ.

REVISIONS				
REV	DESCRIPTION	DATE	ECO	APPR
A	RELEASE TO MFG.	19-Feb-19	10562	SKP



**RECOMMENDED MOUNTING HOLE DIMENSIONS**



LENGTH TABLE		
PART NUMBER (IMPERIAL)	PART NUMBER (METRIC)	LENGTH 'L' IN INCHES [METERS]
95-850-222-006	-	6.00 [0.152]
-	95-850-222M025	9.84 [0.250]
95-850-222-012	-	12.00 [0.305]
95-850-222-018	-	18.00 [0.457]
-	95-850-222M050	19.69 [0.500]
95-850-222-024	-	24.00 [0.610]
-	95-850-222M075	29.53 [0.750]
95-850-222-036	-	36.00 [0.914]
-	95-850-222M100	39.37 [1.000]
95-850-222-048	-	48.00 [1.219]
-	95-850-222M200	78.74 [2.000]
-	95-850-222M400	157.48 [4.000]

TOLERANCE TABLE	
LENGTH IN INCHES/FT [METERS]	TOLERANCE
0" - 23.90" [0 - 0.607]	±0.25" [0.006]
24.00" - 59.00" [0.610 - 1.499]	±0.50" [0.013]
5.0' - 24.9' [1.524 - 7.617]	±2.5%
25.0' & UP [7.620 & UP]	±5.0%

**DESIGN REQUIREMENTS:**


<input checked="" type="checkbox"/> FREQUENCY: DC - 6 GHz	<input checked="" type="checkbox"/> CONTINUITY
<input type="checkbox"/> VSWR: _____ : 1 MAX.	<input checked="" type="checkbox"/> HI-POT: 750 VRMS
<input type="checkbox"/> INS. LOSS: _____ dB MAX.	<input type="checkbox"/> OTHER

**CUSTOMER OUTLINE DRAWING**  
 ALL OTHER SHEETS ARE FOR INTERNAL USE ONLY

UNLESS OTHERWISE SPECIFIED, DIMENSIONS ARE IN INCHES AND TOLERANCES ARE: 2 PLACE DECIMAL 3 PLACE DECIMAL ANGLES ±.015 (0.381 mm) ±.005 (0.127 mm) ± 1°		MATERIAL SEE NOTES	DRAWN KRISHNA S	DATE 31-Jan-19	TITLE TNC RA PLUG IP 67 TO TNC STR BHD JACK IP 67 USING LMR 200 CABLE VARIOUS LENGTH	Amphenol RF www.amphenolrf.com	
NOTICE - These drawings, specifications, or other data (1) are, and remain the property of Amphenol corp. (2) must be returned upon request; and (3) are confidential and not to be disclosed to any person other than those to whom they are given by Amphenol Corp. the furnishing of these drawings, specifications, or other data by Amphenol Corp., or to any other person to anyone for any purpose is not to be regarded by implication or otherwise in any manner licensing, granting rights to permitting such holder or any other person to manufacture, use or sell any product, process or design, patented or otherwise, that may in any way be related to or disclosed by said drawings, specifications, or other data.		REFERENCE EAR # 8892	ENGINEER KRISHNA S	DATE 31-Jan-19	SCALE: 1.1:1.0 SHEET 2 OF 2		DRAWING NO.95-850-222-XXX
CONFIGURATION LEVEL: In Work		APPROVED K.CAPOZZI	DATE 19-Feb-19	CAD FILE	DWG SIZE B	REV A	ITEM NO.95-850-222-XXX
FINISH							PART NO.95-850-222-XXX

## Looking for pricing, stock, or lifecycle information?

Click below to explore more details on WIN SOURCE:

-  [View 095-850-222-048 on WIN SOURCE](#)
-  [Amphenol-RF Division Information](#)

## Optimize Your Supply Chain with WIN SOURCE Solutions

-  Global Sourcing Solution
-  Obsolete Management
-  Cost Control Management
-  Shortage Management
-  Alternative Solution
-  Excess Inventory Management