



# THE DATASHEET OF PW1



**Compression Washers - ROHS Compliant****Mounting -**

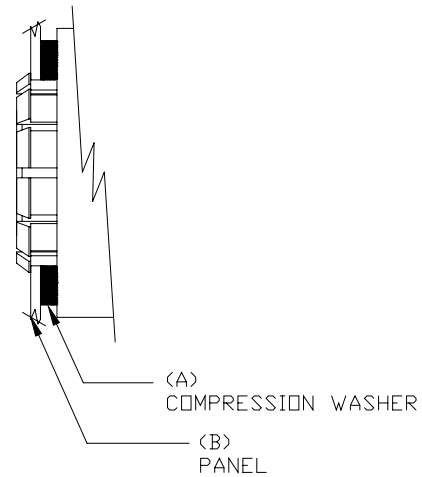
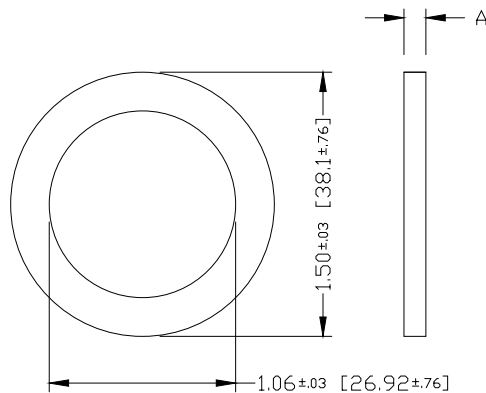
Panel hole  $1.063 \pm .005$  diameter should be punched from the back side so that locking fingers enter on a slightly rounded edge of the hole. Assemble proper compression washer and press into panel hole until locking fingers snap over the hole edge. Installation pressure should be applied at the circumference of the device.

**Use for Snap-In Panel Style Units**

Catalog Number	Thickness (A)	Panel Thickness (B)
PW1	.063	11-12GA (.125-.109)
PW2	.125	13-17GA (.093-.056)
PW3	.187	18-22GA (.050-.031)

Material: Black ester foam

Compression: 5:1



## Looking for pricing, stock, or lifecycle information?

Click below to explore more details on WIN SOURCE:

- ⊖ [View PW1 on WIN SOURCE](#)
- ⊖ [Mallory Sonalert Products Inc. Information](#)

## Optimize Your Supply Chain with WIN SOURCE Solutions

- ✓ Global Sourcing Solution
- ✓ Obsolete Management
- ✓ Cost Control Management
- ✓ Shortage Management
- ✓ Alternative Solution
- ✓ Excess Inventory Management