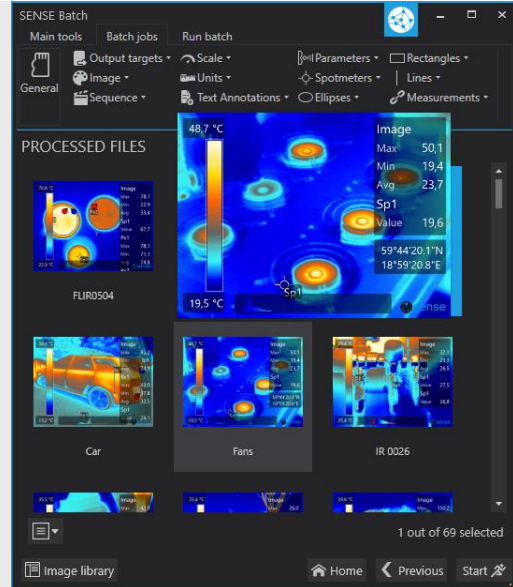
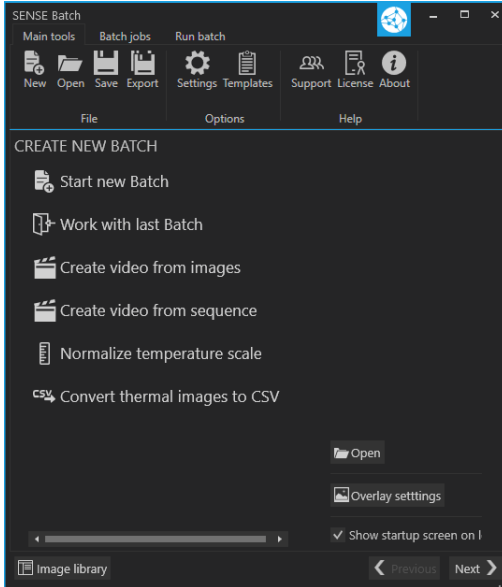




# THE DATASHEET OF SENSE BATCH





## Functional

### Time saving

Automate repetitive work with thermal images

### Jobs variety

SENSE Batch gives you a possibility to process multiple thermal images in any imaginable way

### Multiplicity of outputs

- Radiometric images (.JPG)
- Plain images – overlays (.JPG/.PNG)
- Extract thermal / visual component
- Create videos from image sets (.AVI)
- Export radiometric data to CSV file
- Render profile, histogram plots or map

### Image jobs

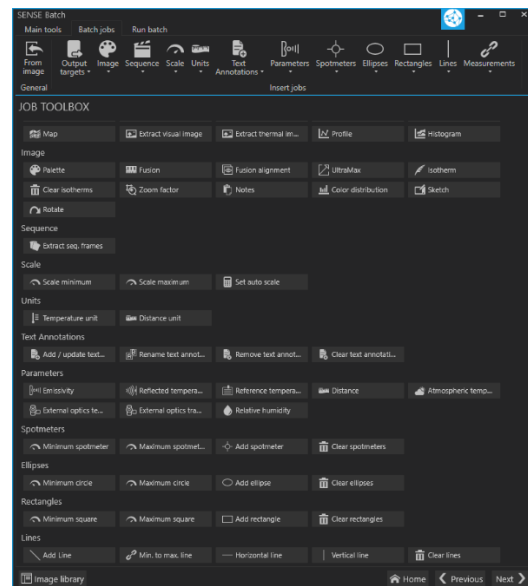
Choose the palette and colour distribution, apply the isotherms, modify fusion, add the sketch or note

### Parameters jobs

Modify thermal parameters like emissivity or relative humidity. Set the image units

### Measurements jobs

Add / remove analytic tools like spot, line, rectangle or ellipse; mark extremes on the image or indicate differences (delta)



## Integrated Image Editor

SENSE Batch contains Image Editor to analyse thermal images and sequences, equipped with unique features:

- **Polygon and magic wand**

Draw an arbitrary measurement

- **Sketch**

Add custom sketch image on the top of any thermal image

- **Custom palettes**

Import or export any colorization

- **Fusion alignment**

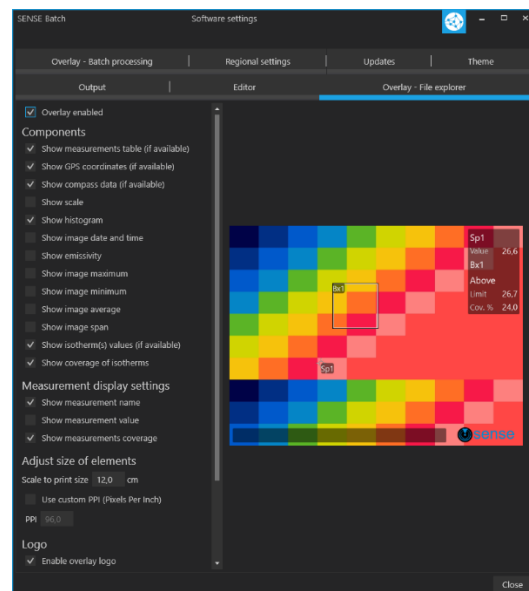
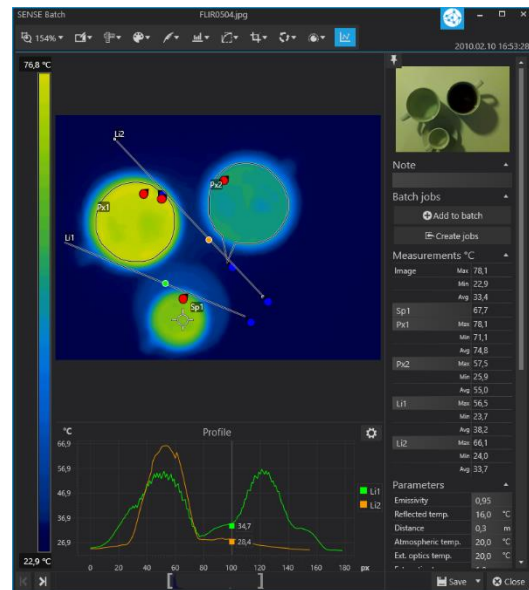
Fix alignment problems caused by the camera

- **Coverage for isotherms and measurements**

Calculate percentage of pixels within specified limits

## Customize overlay

Decide which information should be visible on the image after processing



SENSE Software products are designed thermal images and sequences from **FLIR cameras** that generate images in radiometric JPG format

(including A-, B-, C-, K-, T-, E-, GF-, i-, P6- and FLIR One series)

**Contact us for a quote for custom development services**

**SENSE Software Sp. z o. o.**

al. Wyścigowa 14/413  
02-681 Warszawa, PL

NIP:7010806599



www.sensesoft.eu

info@sensesoft.eu

+48 570 047 470

## Looking for pricing, stock, or lifecycle information?

Click below to explore more details on WIN SOURCE:

-  [View SENSE BATCH](#) on WIN SOURCE
-  [SENSE Software](#) Information

## Optimize Your Supply Chain with WIN SOURCE Solutions

-  Global Sourcing Solution
-  Obsolete Management
-  Cost Control Management
-  Shortage Management
-  Alternative Solution
-  Excess Inventory Management