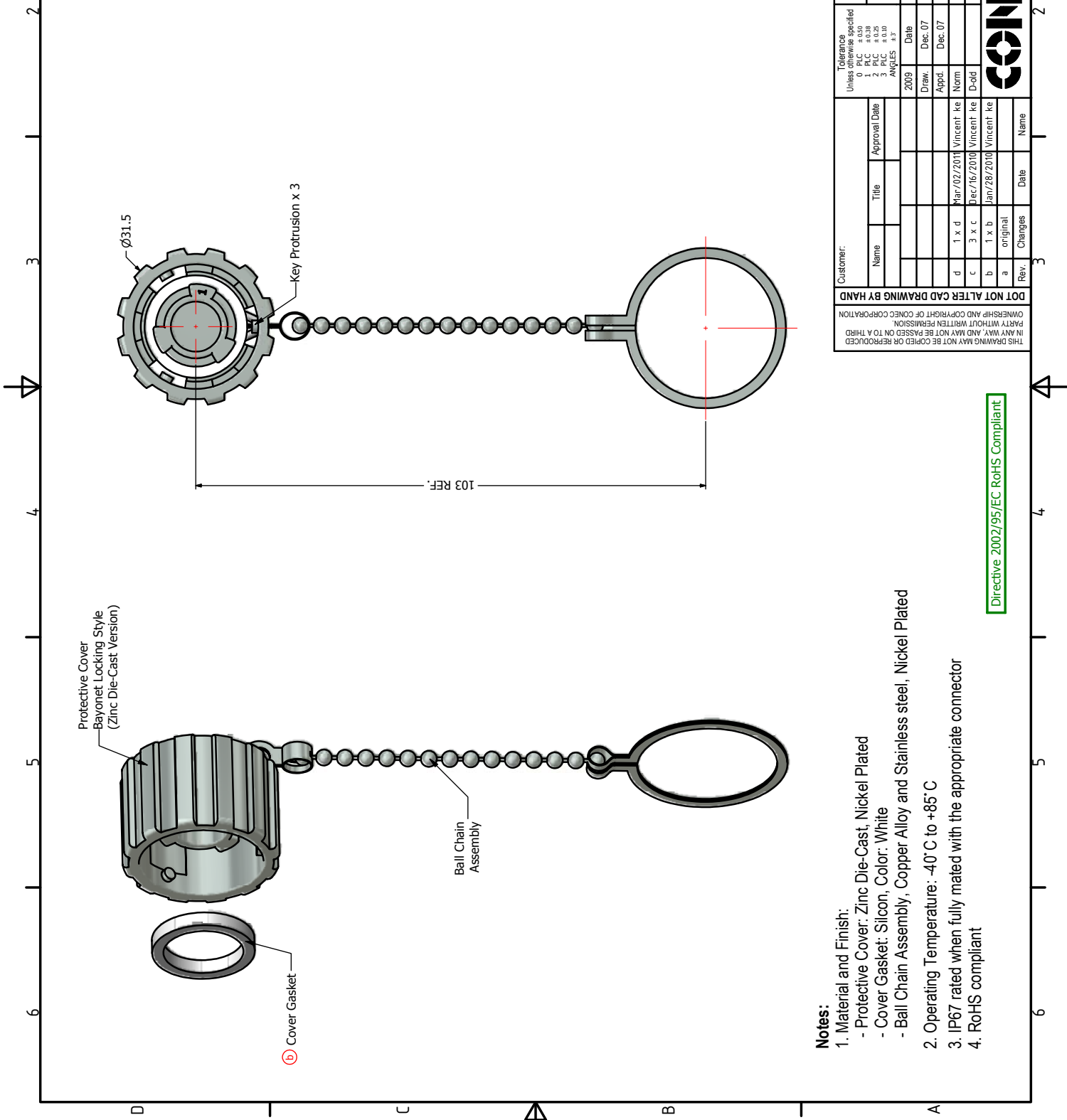




**THE DATASHEET OF
MAX9722BETE+TG104**





Notes:

- 1. Material and Finish:
 - Protective Cover: Zinc Die-Cast, Nickel Plated
 - Cover Gasket: Silicon, Color: White
 - Ball Chain Assembly, Copper Alloy and Stainless steel, Nickel Plated
- 2. Operating Temperature: -40° C to +85° C
- 3. IP67 rated when fully mated with the appropriate connector
- 4. RoHS compliant

Directive 2002/95/EC RoHS Compliant

THIS DRAWING MAY NOT BE COPIED OR REPRODUCED IN ANY WAY, AND MAY NOT BE PASSED ON TO A THIRD PARTY WITHOUT WRITTEN PERMISSION. OWNERSHIP AND COPYRIGHT OF CONEC CORPORATION.

DOT NOT ALTER CAD DRAWING BY HAND

Customer:		Approval Date		Date	
Name	Title				
				2009	N
				Draw.	Dec.07
				Appd.	Dec.07
				Norm	
d	1 x d	Mar/02/2010	Vincent	ke	
c	3 x c	Dec/16/2010	Vincent	ke	D-old
b	1 x b	Jan/28/2010	Vincent	ke	
a	original				
Rev.	Changes	Date	Name		

Tolerance Unless otherwise specified		Date	
0	P/LC ± 0.50	Draw.	Dec.07
1	P/LC ± 0.38	Appd.	Dec.07
2	P/LC ± 0.30	Norm	
3	P/LC ± 0.10		
ANGLES			
	± 3°		



Looking for pricing, stock, or lifecycle information?

Click below to explore more details on WIN SOURCE:

 [View MAX9722BETE+TG104 on WIN SOURCE](#)

 [Maxim Integrated](#) Information

Optimize Your Supply Chain with WIN SOURCE Solutions

-  Global Sourcing Solution
-  Obsolete Management
-  Cost Control Management
-  Shortage Management
-  Alternative Solution
-  Excess Inventory Management