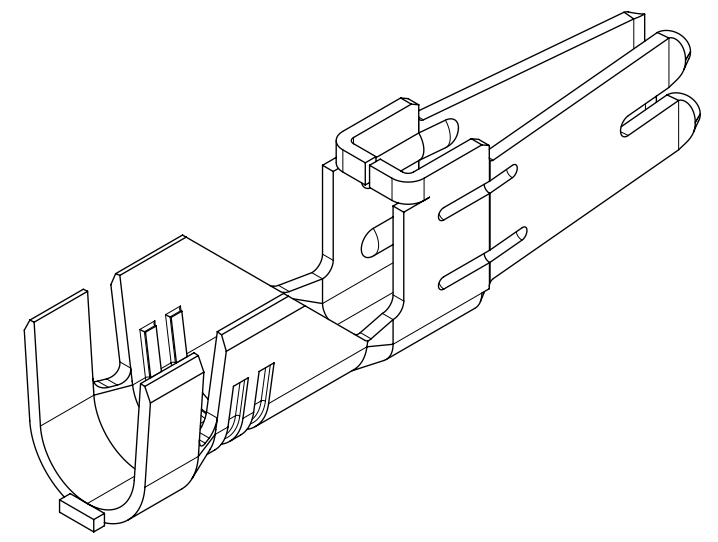
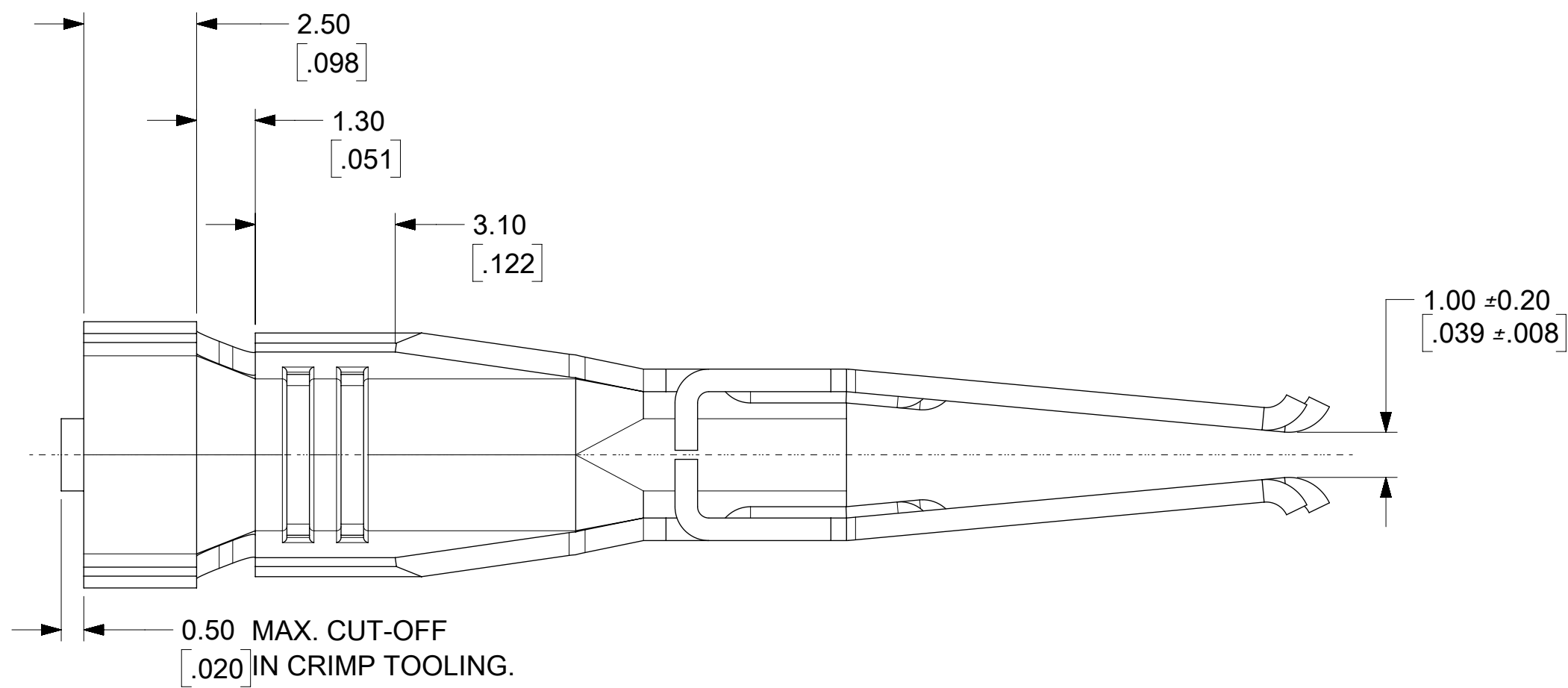


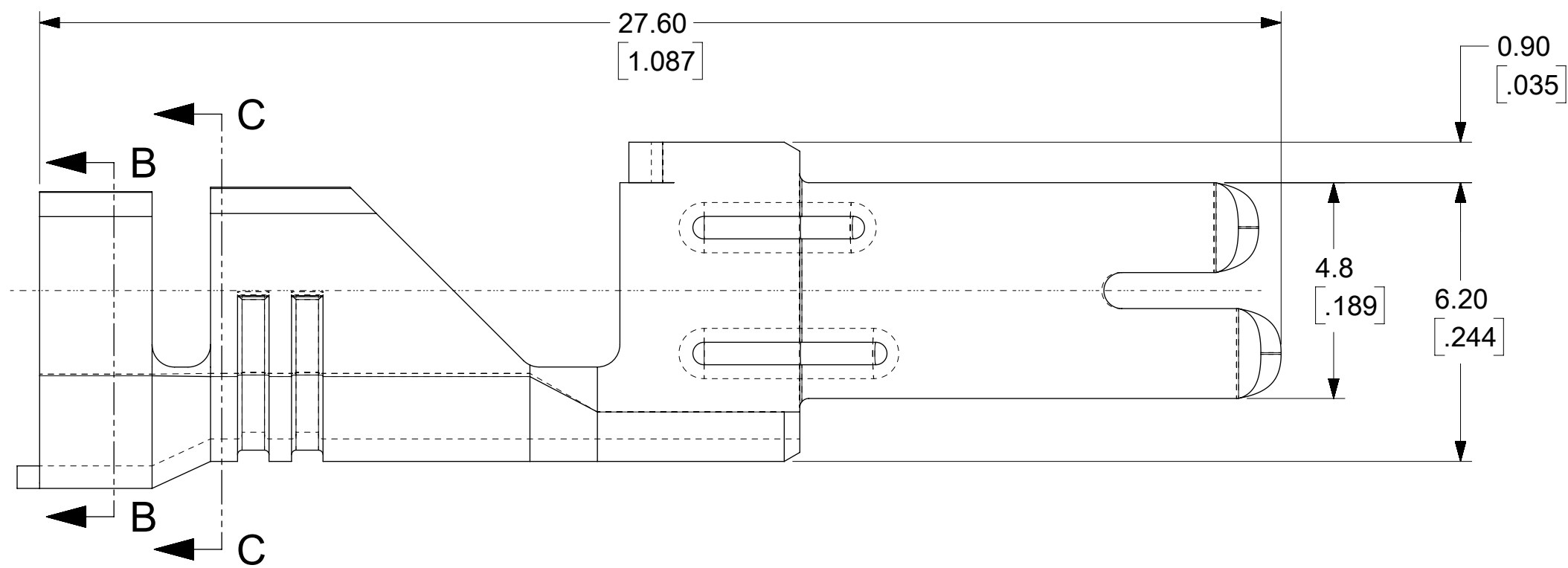


THE DATASHEET OF
428150032

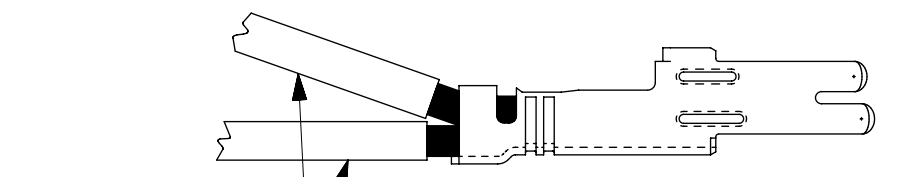
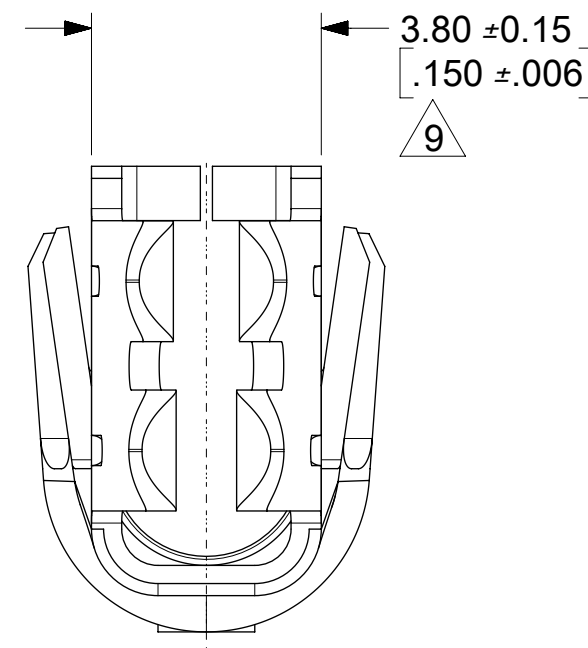




ISOMETRIC VIEW
(SCALE 4:1)

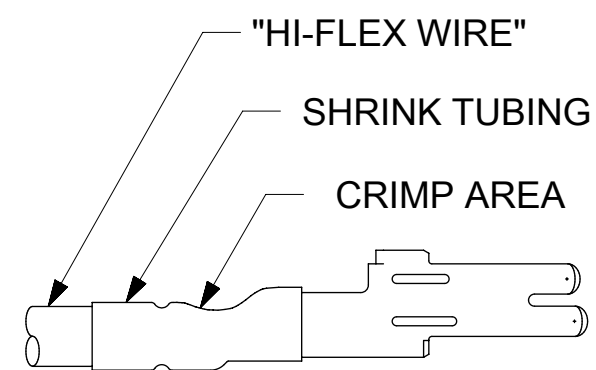


12 & 10 AWG TERMINAL

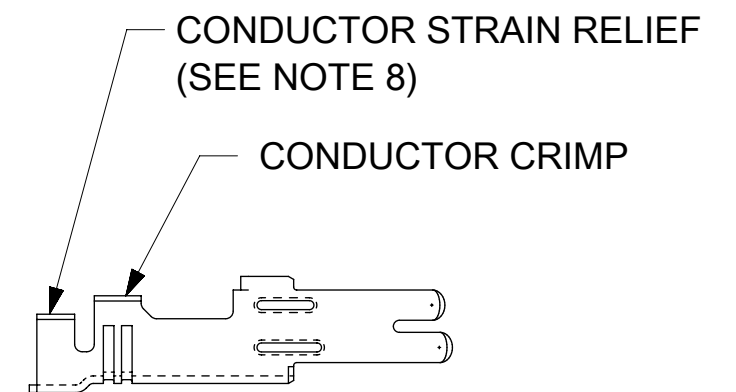


12AWG WIRE

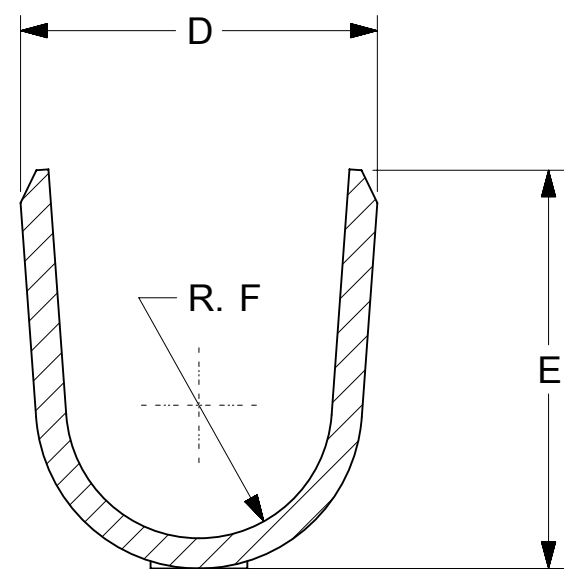
8AWG TERMINAL
12AWG DOUBLE CRIMP
(SEE NOTE 11)



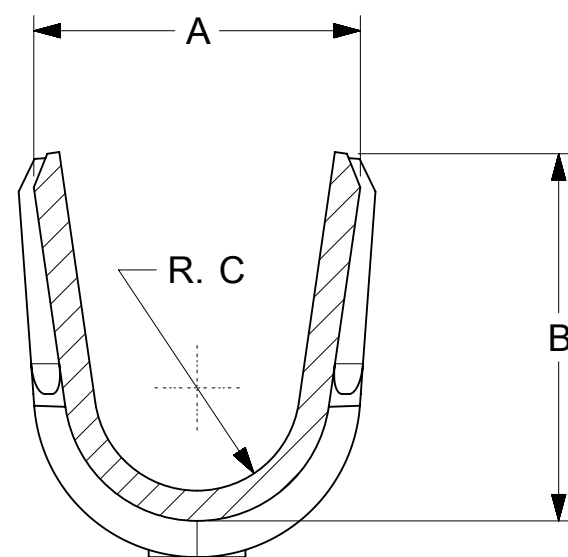
8 AWG TERMINAL
(SEE NOTE 10)



8 AWG TERMINAL
(SEE NOTE 8)



SECTION B-B



SECTION C-C
(BACKGROUND OMMITED)

THIS DRAWING CONTAINS INFORMATION THAT IS PROPRIETARY TO MOLEX ELECTRONIC TECHNOLOGIES, LLC AND SHOULD NOT BE USED WITHOUT WRITTEN PERMISSION

| | | | | | | | |
|--|--|---------|--------|---------------------------------------|--|--------------|--|
| DIMENSION UNITS | | SCALE | | CURRENT REV DESC: REPLACES SD-42815-* | | | |
| MM/IN | | 8:1 | | | | | |
| GENERAL TOLERANCES (UNLESS SPECIFIED) | | | | EC NO: 612616 | | | |
| | | MM | INCH | DRWN: SGANGADHARDO 2019/02/22 | | | |
| 4 PLACES | | ± | ± | CHK'D: SGANGADHARDO 2019/02/22 | | | |
| 3 PLACES | | ± | ± 0.1 | APPR: ISHWARG 2019/02/25 | | | |
| 2 PLACES | | ± 0.25 | ± 0.16 | INITIAL REVISION: | | | |
| 1 PLACE | | ± 0.4 | ± | DRWN: RJF 1992/06/01 | | | |
| 0 PLACES | | ± | ± | APPR: RAS 1992/06/01 | | | |
| ANGULAR TOL | | ± 0.5 ° | | THIRD ANGLE PROJECTION | | | |
| DRAFT WHERE APPLICABLE MUST REMAIN WITHIN DIMENSIONS | | | | DRAWING | | SERIES | |
| | | | | C-SIZE | | 42815 | |
| DOCUMENT NUMBER | | | | DOC TYPE | | DOC PART | |
| 428150000-SD | | | | PSD | | 000 | |
| MATERIAL NUMBER | | | | CUSTOMER | | REVISION | |
| SEE CHART | | | | GENERAL MARKET | | A1 | |
| DOCUMENT STATUS | | | | RELEASE DATE | | SHEET NUMBER | |
| P1 | | | | 2019/02/25 05:13:52 | | 1 OF 2 | |

molex

FEMALE CRIMP TERMINAL, 12, 10 & 8AWG MINIFIT SR.

PRODUCT CUSTOMER DRAWING

THIS DOCUMENT HAS BEEN RE-ISSUED BASED ON SD-42815-*, REV J.

DOCUMENT STATUS P1 RELEASE DATE 2019/02/25 05:13:52

| ITEM NUMBER | WIRE RANGE | DIM. A | DIM. B | DIM. C | DIM. D | DIM. E | DIM. F | MAX. INSULATION DIAMETER | PLATING | STATUS |
|-------------|--|-------------------------|-------------------------|------------------|-------------------------|-------------------------|------------------|--------------------------|---------------|--------------------------|
| 428150011 | 12 & 10 AWG (5 & 6mm ²) | 5.40±.60 [.213±.024] | 6.10±.40 [.240±.016] | R 1.70 [.067] | 5.90±.60 [.232±.024] | 6.60±.40 [.260±.016] | R 2.20 [.087] | 5.30 DIA. [.209] | OVERALL TIN | PLANNED FOR OBSOLESCENCE |
| 428150031 | 8 AWG | 5.83±.60 [.229±.024] | 7.42±.40 [.292±.016] | R 1.70 [.067] | 6.00±.60 [.236±.024] | 5.50±.40 [.216±.016] | R 2.20 [.087] | 6.60 DIA. [.260] | | |
| 428150012 | 12 & 10 AWG (5 & 6mm ²) | 5.40±.60 [.213±.024] | 6.10±.40 [.240±.016] | R 1.70 [.067] | 5.90±.60 [.232±.024] | 6.60±.40 [.260±.016] | R 2.20 [.087] | 5.30 DIA. [.209] | SELECT GOLD | ACTIVE |
| 428150032 | 8 AWG | 5.83±.60 [.229±.024] | 7.42±.40 [.292±.016] | R 1.70 [.067] | 6.00±.60 [.236±.024] | 5.50±.40 [.216±.016] | R 2.20 [.087] | 6.60 DIA. [.260] | | |
| 428150114 | 12 & 10 AWG (5 & 6mm ²) | 5.40±.60 [.213±.024] | 6.10±.40 [.240±.016] | R 1.70 [.067] | 5.90±.60 [.232±.024] | 6.60±.40 [.260±.016] | R 2.20 [.087] | 5.30 DIA. [.209] | SELECT SILVER | ACTIVE |
| 428150134 | 8 AWG | 5.83±.60 [.229±.024] | 7.42±.40 [.292±.016] | R 1.70 [.067] | 6.00±.60 [.236±.024] | 5.50±.40 [.216±.016] | R 2.20 [.087] | 6.60 DIA. [.260] | | |

NOTES:

- 1) MATERIAL: COPPER ALLOY 151, .020/(.50) THICK.
- 2) PLATING:
 - 1 = .000100/(.00254) MIN. *TIN OVER
.000050/(.00127) MIN. NICKEL.
 - 2 = .000030/(.00076) MIN. SELECT GOLD IN CONTACT AREA.
.000100/(.00254) MIN. SELECT *TIN ON SOLDER TAILS
OVER .000050/(.00127) MIN. NICKEL.
 - 4 = .000100/(.00254) MIN. SELECT SILVER IN CONTACT AREA
.000100/(.00254) MIN. SELECT TIN ON SOLDER TAILS
OVER .000050/(.00127) MIN. NICKEL.
- 3) PRODUCT SPEC.: PS-42815-001
- 4) PACKAGING INFORMATION: PK-42815-001.
- 5) PART IS DESIGNED IN METRIC.
- 6) TERMINALS FOR USE WITH STRANDED WIRE ONLY.
- 7) ITEM NUMBERS PRECEDED BY AN "X" IN THE CHART ARE NOT AVAILABLE.
- 8) THE 8 AWG TERMINAL HAS NO INSULATION CRIMP. THE SECONDARY CRIMP SECTION ACTS AS A STRAIN RELIEF ON THE BARE CONDUCTOR ONLY. SEE MOLEX CRIMP SPECIFICATION FOR DETAILS.
- 9) AFTER CRIMPING, THIS DIMENSION IS .140/(3.55) MINIMUM.
- 10) WHEN USING THE 8 AWG TERMINAL WITH "SUPERFLEX WIRE", MOLEX STRONGLY RECOMMENDS THAT THE APPROPRIATELY RATED HEAT SHRINK INSULATION BE APPLIED OVER THE WIRE INSULATION AND CRIMP AREA, AS SHOWN, TO MINIMIZE WIRE INSULATION CREEPAGE OUTSIDE OF HOUSING.
- 11) THE 8AWG TERMINAL WILL ALSO ACCOMODATE 2 12AWG WIRES SEE CRIMP SPEC FOR DETAILS.
- 12) PARTS CONFORM TO CLASS 'B' REQUIREMENT OF COSMETIC SPEC PS-45499-002.
- 13) FOR PLATING OPTION 2 SEE NOTE 2 (OVERALL TIN PLATED PARTS), FOR APPLICATIONS INVOLVING VIBRATION AND/OR THERMAL CYCLING, MOLEX STRONGLY RECOMMENDS TO USE NYE LUBRICANT, NYOGEL 760G LUBRICANT ON THE MATING AREA, AFTER THE TERMINALS ARE INSERTED INTO THE HOUSING, REFER AS-42815-001 FOR ADDITIONAL INFORMATION.
- 14) THIS DRAWING REPLACES SD-42815-* REV. J AND 428150000 REV. A.

| | | | | | | | | | |
|---|---|------------------------|--------|--|--|--------------|--|-----------------|--|
| THIS DRAWING CONTAINS INFORMATION THAT IS PROPRIETARY TO MOLEX ELECTRONIC TECHNOLOGIES, LLC AND SHOULD NOT BE USED WITHOUT WRITTEN PERMISSION | | | | | | | | | |
| DIMENSION UNITS | | SCALE | | CURRENT REV DESC: REPLACES SD-42815-* | | | | | |
| MM/IN | | 1:1 | | EC NO: 612616 DRWN: SGANGADHARDO 2019/02/22 CHK'D: SGANGADHARDO 2019/02/22 APPR: ISHWARG 2019/02/25 | | | | | |
| GENERAL TOLERANCES (UNLESS SPECIFIED) | | | | | | | | | |
| | | MM | INCH | INITIAL REVISION: DRWN: RJF 1992/06/01 APPR: RAS 1992/06/01 | | | | | |
| 4 PLACES | ± | | ± | | | | | | |
| 3 PLACES | ± | | ± 0.1 | | | | | | |
| 2 PLACES | ± | 0.25 | ± 0.16 | | | | | | |
| 1 PLACE | ± | 0.4 | ± | | | | | | |
| 0 PLACES | ± | | ± | THIRD ANGLE PROJECTION DRAFT WHERE APPLICABLE MUST REMAIN WITHIN DIMENSIONS | | | | | |
| ANGULAR TOL | | ± 0.5 ° | | | | | | | |
| DRAFT WHERE APPLICABLE MUST REMAIN WITHIN DIMENSIONS | | THIRD ANGLE PROJECTION | | DRAWING | | SERIES | | MATERIAL NUMBER | |
| | | C-SIZE | | 42815 | | 428150000-SD | | CUSTOMER | |
| | | | | | | PSD | | GENERAL MARKET | |
| | | | | | | 000 | | SHEET NUMBER | |
| | | | | | | A1 | | 2 OF 2 | |



FEMALE CRIMP TERMINAL, 12, 10 & 8AWG MINIFIT SR.

PRODUCT CUSTOMER DRAWING

DOCUMENT NUMBER: 428150000-SD
DOC TYPE: PSD
DOC PART: 000
REVISION: A1

Looking for pricing, stock, or lifecycle information?

Click below to explore more details on WIN SOURCE:

 [View 428150032 on WIN SOURCE](#)

 [Molex, LLC Information](#)

Optimize Your Supply Chain with WIN SOURCE Solutions

-  Global Sourcing Solution
-  Obsolete Management
-  Cost Control Management
-  Shortage Management
-  Alternative Solution
-  Excess Inventory Management