



**THE DATASHEET OF  
ECC49DTKH-S420**

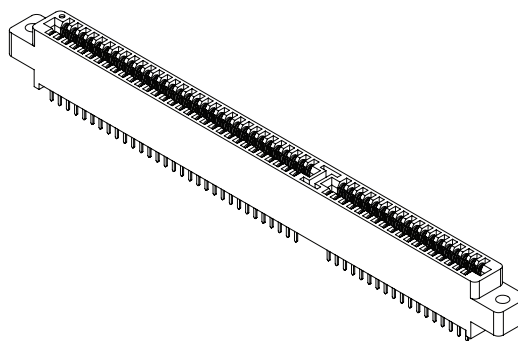




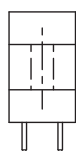
**.100" [2.54 mm] Contact Centers, .610" [15.49 mm] Insulator Height, [ISA] Dip Solder/Wire Wrap/Right Angle**

## SPECIFICATIONS

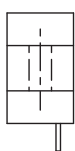
- Accommodates .062" ± .008" [1.57 mm ± 0.20 mm] PC board
- PBT or PA9T insulator
- Molded-in key available
- 3 Amps current rating for one contact energized
- 30 milli Ohms maximum at rate current
- UL Flammability Rating: 94V-0



## READOUT



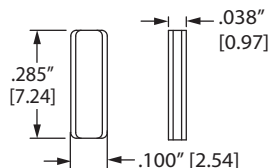
DUAL (D)



HALF LOADED (H)

## POLARIZING KEY

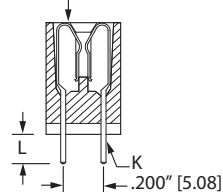
PLC-K1



KEY IN BETWEEN CONTACTS  
(ORDER SEPARATELY)

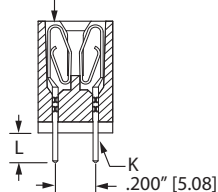
## TERMINATION TYPE

HAIRPIN BELLOWS

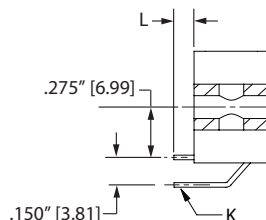


HAIRPIN BELLOWS  
(CS,CM,CW,CT)

LOOP BELLOWS



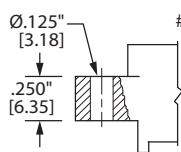
LOOP BELLOWS  
(TK,RS,RM)



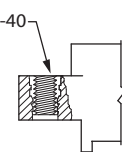
RIGHT ANGLE, DIP SOLDER  
(CA,CB,CC,TA,TB,TM)  
-S605 MODIFICATION

HAIRPIN BELLOWS	LOOP	TERMINATION TYPE	POST CROSS SECTION K	POST LENGTH L .025" [0.64]	FITS MIN. HOLE SIZE
CM	TK, CK	DIP SOLDER	.025" [0.64] ROUND	.190" [4.83]	.033" [0.84]
	RS	DIP SOLDER	.025" [0.64] SQUARE	.190" [4.83]	.040" [1.02]
	RM	WIRE WRAP	.025" [0.64] SQUARE	.560" [14.20]	.040" [1.02]
CA	TA	RIGHT ANGLE	.025" [0.64] SQUARE	.100" [2.54]	.043" [1.09]
CB	TB	RIGHT ANGLE	.025" [0.64] SQUARE	.180" [4.57]	.043" [1.09]
CC	TM	RIGHT ANGLE	.025" [0.64] SQUARE	.250" [6.35]	.043" [1.09]
CW		DIP SOLDER	.015" X .025" [0.38 X 0.64]	.125" [3.18]	.035" [0.89]
CT		DIP SOLDER	.015" X .025" [0.38 X 0.64]	.170" [4.32]	.035" [0.89]
CS		DIP SOLDER	.025" [0.64] SQUARE	.160" [4.06]	.040" [1.02]

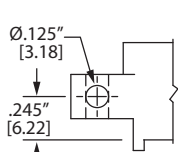
## MOUNTING STYLE



CLEARANCE HOLE (H)



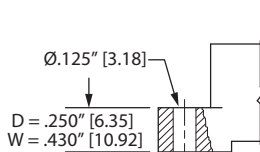
THREADED INSERT (I)



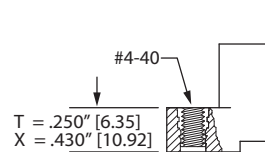
SIDE MOUNTING (S)



NO MOUNTING EARS (N)



FLUSH MOUNTING (D, W)



FLUSH MOUNTING WITH THREADED INSERT (T, X)



### .100" [2.54 mm] Contact Centers, .610" [15.49 mm] Insulator Height, [ISA] Dip Solder/Wire Wrap/Right Angle

#### PART NUMBER OPTIONS

##### MATERIALS (INSULATOR/CONTACT)

- E = PBT/Phosphor Bronze (Standard)
  - G = PA9T/Phosphor Bronze
  - H = PBT/Beryllium Copper
  - J = PA9T/Beryllium Copper
- (Consult factory for other materials.)  
Refer to Page 7 for Operating/Processing Temperatures

##### CONTACT FINISH - RoHS Compliant

All platings are Lead Free and have .000050" Nickel underplate

Contact Surface	Termination
B = .000010" Gold	.000100" Pure Tin, Matte
C = .000030" Gold	.000100" Pure Tin, Matte
G = .000010" Gold	.000005" Gold
Y = .000030" Gold	.000005" Gold
Contact Surface	Overall Plating
S = .000010" Gold	.000010" Gold
M = .000030" Gold	.000010" Gold
E = .000100" Pure Tin, Matte	.000100" Pure Tin, Matte

##### CONTACT CENTERS

- C = .100" [2.54 mm]

##### NUMBER OF CONTACT POSITIONS

- 18, 31 or 49 (31/18)

##### READOUT (Opposite page)

- D = Dual
- H = Half Loaded

#### E B C 49 D CW N - S420

##### MODIFICATION CODE (Consult Factory)

###### ISA WITH RETENTION FEATURE

- S524 = 18 Positions
- S524 = 31 Positions
- S518 = 49 Positions (31/18)

###### ISA WITHOUT RETENTION FEATURE

- S371 = 18 Positions
- S371 = 31 Positions
- S420 = 49 Positions (31/18) Dip Solder or Wire Wrap
- S605 = 49 Positions (31/18) Right Angle\*\*

##### MOUNTING STYLE (Opposite Page)

- H = Clearance Holes
- I = Threaded Inserts
- S = Side Mounting
- N = No Mounting
- D, W = Flush Mounting
- T, X = Flush Mounting With Threaded Inserts

##### TERMINATION TYPE (Opposite Page)

###### Hairpin Bellows \*

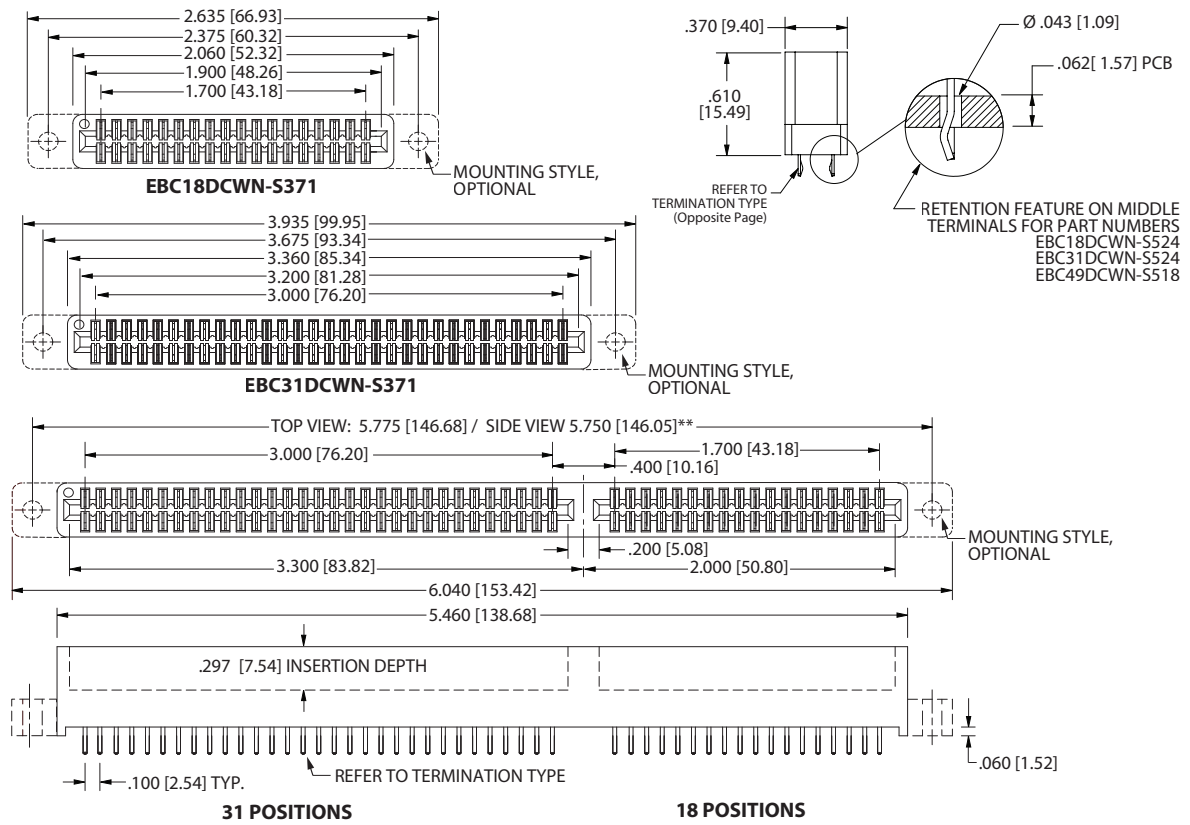
- CS = .025" [0.64 mm] Square Dip Solder
- CM = .025" [0.64 mm] Square Wire Wrap
- CA, CB, CC = .025" [0.64 mm] Square Right Angle
- CW, CT = .015" X .025" [0.38 mm X 0.64 mm] Dip Solder

###### Loop Bellows

- RS = .025" [0.64 mm] Square Dip Solder
- TK = .025" [0.64 mm] Round Dip Solder
- RM = .025" [0.64 mm] Square Wire Wrap
- TA, TB, TM = .025" [0.64 mm] Square Right Angle

\* Available in B or C Plating and Phosphor Bronze only  
Consult Factory for Cantilever Terminations

#### DIMENSIONS Dimensions in [ ] are in millimeters, all others are in inches.





\*\* 5.750 [146.05] ONLY APPLIES IF P/N ENDS WITH -S605 AND HAS SIDE MOUNTING (MTG CODE 'S')

Female Card Edge

## Looking for pricing, stock, or lifecycle information?

Click below to explore more details on WIN SOURCE:

-  [View ECC49DTKH-S420 on WIN SOURCE](#)
-  [Sullins Connector Solutions Information](#)

## Optimize Your Supply Chain with WIN SOURCE Solutions

-  Global Sourcing Solution
-  Obsolete Management
-  Cost Control Management
-  Shortage Management
-  Alternative Solution
-  Excess Inventory Management