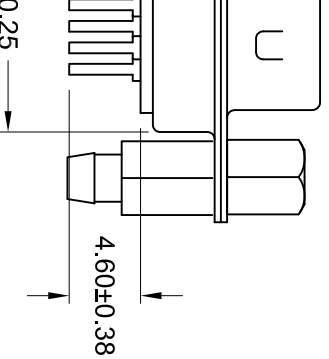
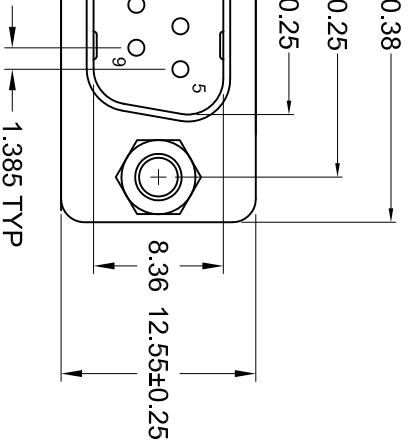
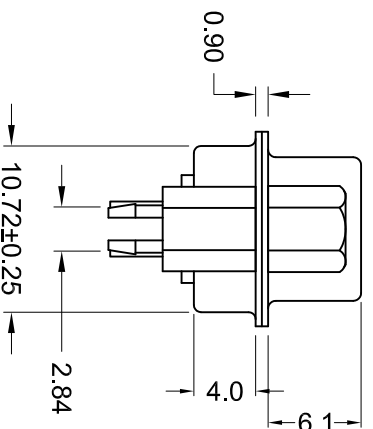
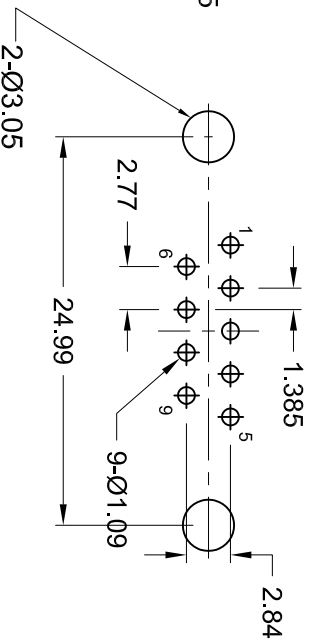




**THE DATASHEET OF
K85X-ED-9P-BRJ**



Recommended PCB Layout (top view)



Material and Finish

Shell: steel, Nickel plated
 Insulator: PBT with glass-
 fiber reinforcement,
 UL 94AV-0 rated,
 color-black

Contact Material:

Plug: Brass

Contact Plating:

Standard:

Gold flash on mating end,
 tin on termination end, with
 entire contact nickel underplated

-15 Option:

15u" gold on mating end,
 tin on termination end, with
 entire contact nickel underplated

-30 Option:

30u" gold on mating end,
 tin on termination end, with
 entire contact nickel underplated

Electrical Specifications

Rated Current: 2A

Rated Voltage: 30V RMS

Withstanding Voltage:

500V (rms) AC for 1 minute

Insulation Resistance:

more than 1000 Megohm
 at 500V DC

Contact Resistance:

13 milliohm max.

Dielectric Strength:

10000V for 1 minute

Operating Temperature:

-55°C to +105°C

Ordering Information

Part Number	Contact Area Plating Finish
K85X-ED-9P-BRJ	Gold Flash (standard)
K85X-ED-9P-BRJ15	15u" Gold (15 option)
K85X-ED-9P-BRJ30	30u" Gold (30 option)

Tolerances

X.X ± 0.25
 X.XX ± 0.15
 Unless Stated
 Otherwise

ROHS COMPLIANT



LR78160

V. BY	CHK. BY	DRAWN BY	DATE
Aguire	H. MA	R. Aguire	10/13/05
ILL. H.	H. MA		UNITS
Serrato	C. Furumatsu		mm

K85X-ED-9P-BRJ

Vertical PCB Mount D-Sub, RoHS Compliant
 9 Pin Male, Bdlocks, Jackscrews



KYCON

Looking for pricing, stock, or lifecycle information?

Click below to explore more details on WIN SOURCE:

 [View K85X-ED-9P-BRJ on WIN SOURCE](#)

 [Kycon, Inc. Information](#)

Optimize Your Supply Chain with WIN SOURCE Solutions

-  Global Sourcing Solution
-  Obsolete Management
-  Cost Control Management
-  Shortage Management
-  Alternative Solution
-  Excess Inventory Management