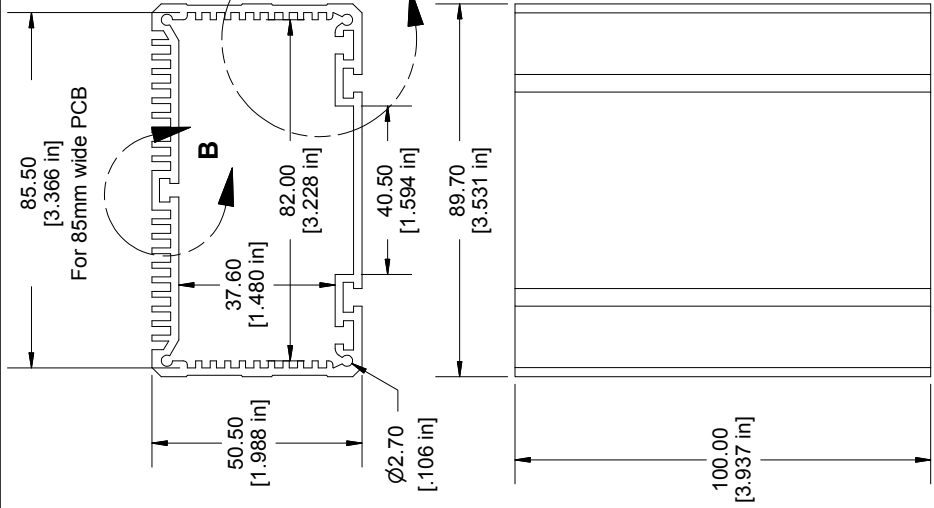


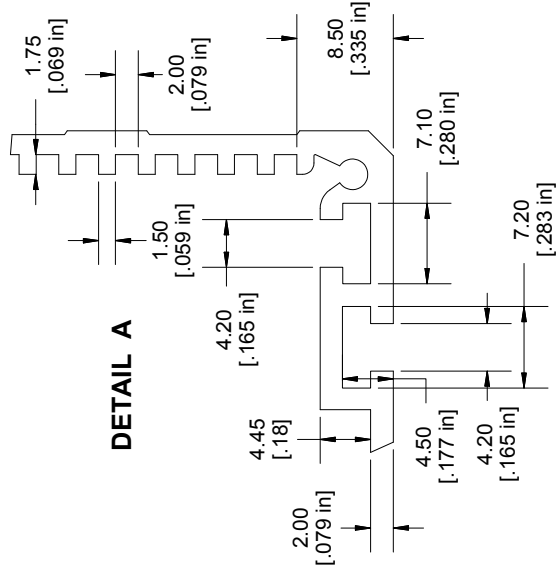


**THE DATASHEET OF**  
**031623**

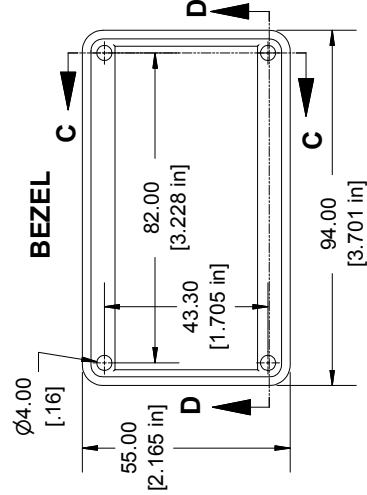
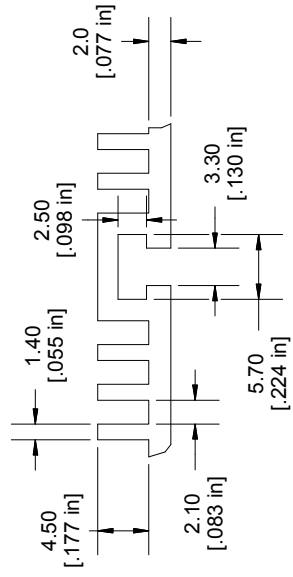




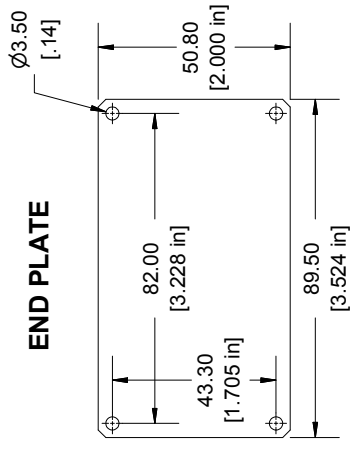
**DETAIL A**



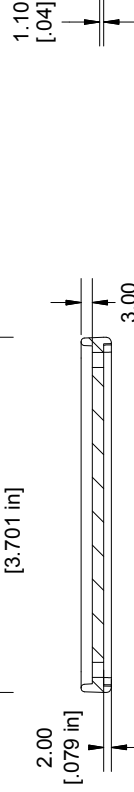
**DETAIL B**



**END PLATE**



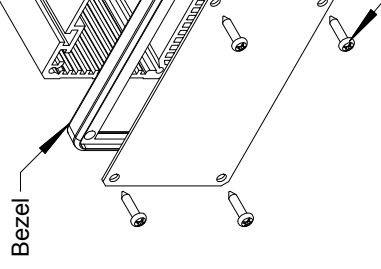
**SECTION C-C**



**Dimensions:**  
mm  
[inches]

Extrusion

Bezel



Enclosures can be  
Contact Factory  
Solid models of this  
(Part number and text please  
we do not recommend using

Purchased assembly in

**Recommended Co**

Extrusion Aluminum

Extrusion Aluminum



End Plate Aluminum

End Plate Aluminum



## Looking for pricing, stock, or lifecycle information?

Click below to explore more details on WIN SOURCE:

-  [View 031623 on WIN SOURCE](#)
-  [Hammond Manufacturing Information](#)

## Optimize Your Supply Chain with WIN SOURCE Solutions

-  Global Sourcing Solution
-  Obsolete Management
-  Cost Control Management
-  Shortage Management
-  Alternative Solution
-  Excess Inventory Management