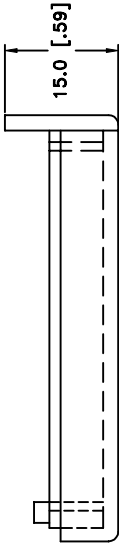
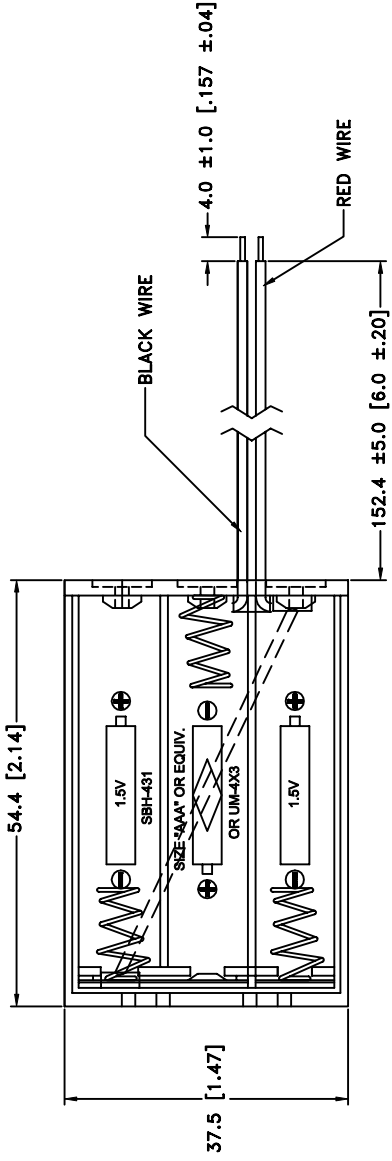




THE DATASHEET OF SBH431B



Date	SYM



BOTTOM-HOUSING

TOP COVER



Tolerance (Except as noted)		Memory Protection 200 Broad Hollow Road
decimal		
±.5 (.020)		
Fractional		
± .8 (.030)	Title	3 CELL "AAA" HOLD
Angular	Date	Drawing Number
± 3°	04/07/01	

NOTES:

- ITEM NO. SBH-431A
- MATERIAL:
HOUSING AND COVER: BLACK ABS
WIRE: UL1007, AWG #26, BLACK AND RED-152.4mm LONG,
STRIPPED AND TINNED- 5mm LONG
SPRING: 0.5mm, 65C, SPRING WIRE
EYELETS: BRASS, NICKLE PLTD.

Looking for pricing, stock, or lifecycle information?

Click below to explore more details on WIN SOURCE:

-  [View SBH431B on WIN SOURCE](#)
-  [MPD \(Memory Protection Devices\) Information](#)

Optimize Your Supply Chain with WIN SOURCE Solutions

-  Global Sourcing Solution
-  Obsolete Management
-  Cost Control Management
-  Shortage Management
-  Alternative Solution
-  Excess Inventory Management