



**THE DATASHEET OF
G40H4132211HR**





Features:

- SFF-8643 compliance
- Meets SAS 3.0 (12Gbps) electrical performance
- 0.75mm pitch connector system
- Improved signal integrity & minimized cross-talk
- Eliminates need for mechanical key
- Pinouts map easily with existing Mini SAS product
- Press-fit pin design provides one step placement onto PCB

Overview:

Amphenol's Mini-SAS High Density connector system is the next generation SAS system that provides faster data rates and more bandwidth. It provides double the port density of current Mini-SAS connectors with 1X1 (4x), 1X2 (8x) and 1X4 (16x) port options. The Mini-SAS HD connector system has a two-row, right-angle connector with 12Gbps of data rate per channel. Each connector (port) handles 4 lanes of data rate for up to 48Gbps. of total bandwidth.



Applications:

- Medical
- Telecom
- Networking
- Server
- Storage
- Test & Industrial



To learn more about Mini-SAS HD connectors:

web: amphenolcanada.com

email: sales@amphenolcanada.com

Technical Characteristics:

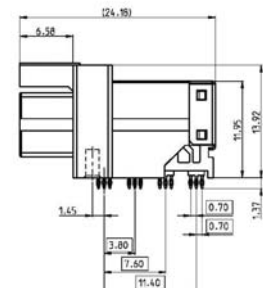
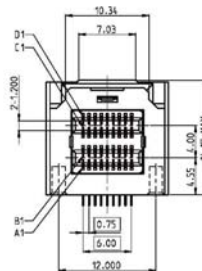
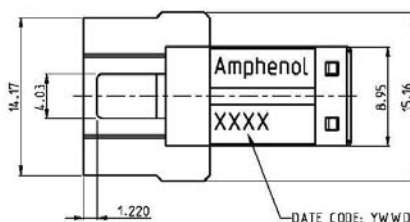
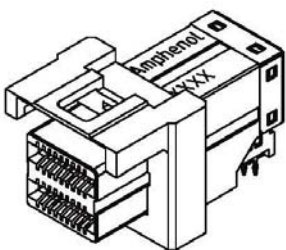
Electrical	
Operating Current	0.5A max. per contact
Operating Voltage	30V AC(rms)/DC max.
DWV	300V DC
Insulation Resistance	1000MΩ min.
Differential Impedance	100Ω ±10Ω

Mechanical	
Mating Force	100N max.
Unmating Force	50N max.
Durability	250 cycles

Series	Configuration Type	Termination Style	Impedance Spec	Port	Wall Version
G40H11	Right Angle	Press Fit	100 ohm	1x1	Single
G40H12	Right Angle	Press Fit	100 ohm	1x2	Single
G40H13	Right Angle	Press Fit	100 ohm	1x4	Single
G40HA1	Right Angle	Press Fit	85 ohm	1x1	Single
G40HA2	Right Angle	Press Fit	85 ohm	1x2	Single
G40HA3	Right Angle	Press Fit	85 ohm	1x4	Single
G40H21 G40H22	Vertical	SMT	100 ohm	1x1 1x2	Single
G40H31 G40H32	Vertical	SMT	100 ohm	1x1 1x2	Dual
G40H41 G40H42	Vertical	SMT	100 ohm	1x1 1x2	Four
G40HB1 G40HB2	Vertical	SMT	85 ohm	1x1 1x2	Single
G40HC1 G40HC2	Vertical	SMT	85 ohm	1x1 1x2	Dual
G40HD1 G40HD2	Vertical	SMT	85 ohm	1x1 1x2	Four

Dimensions:


All drawings are measured in inches (mm).



* Please visit amphenolcanada.com to find drawings for other products in this series.

Looking for pricing, stock, or lifecycle information?

Click below to explore more details on WIN SOURCE:

 [View G40H4132211HR](#) on WIN SOURCE

 [Amphenol](#) Information

Optimize Your Supply Chain with WIN SOURCE Solutions

-  Global Sourcing Solution
-  Obsolete Management
-  Cost Control Management
-  Shortage Management
-  Alternative Solution
-  Excess Inventory Management