



THE DATASHEET OF ERF8-020-01-L-D-RA-L-TR

www.win-source.net

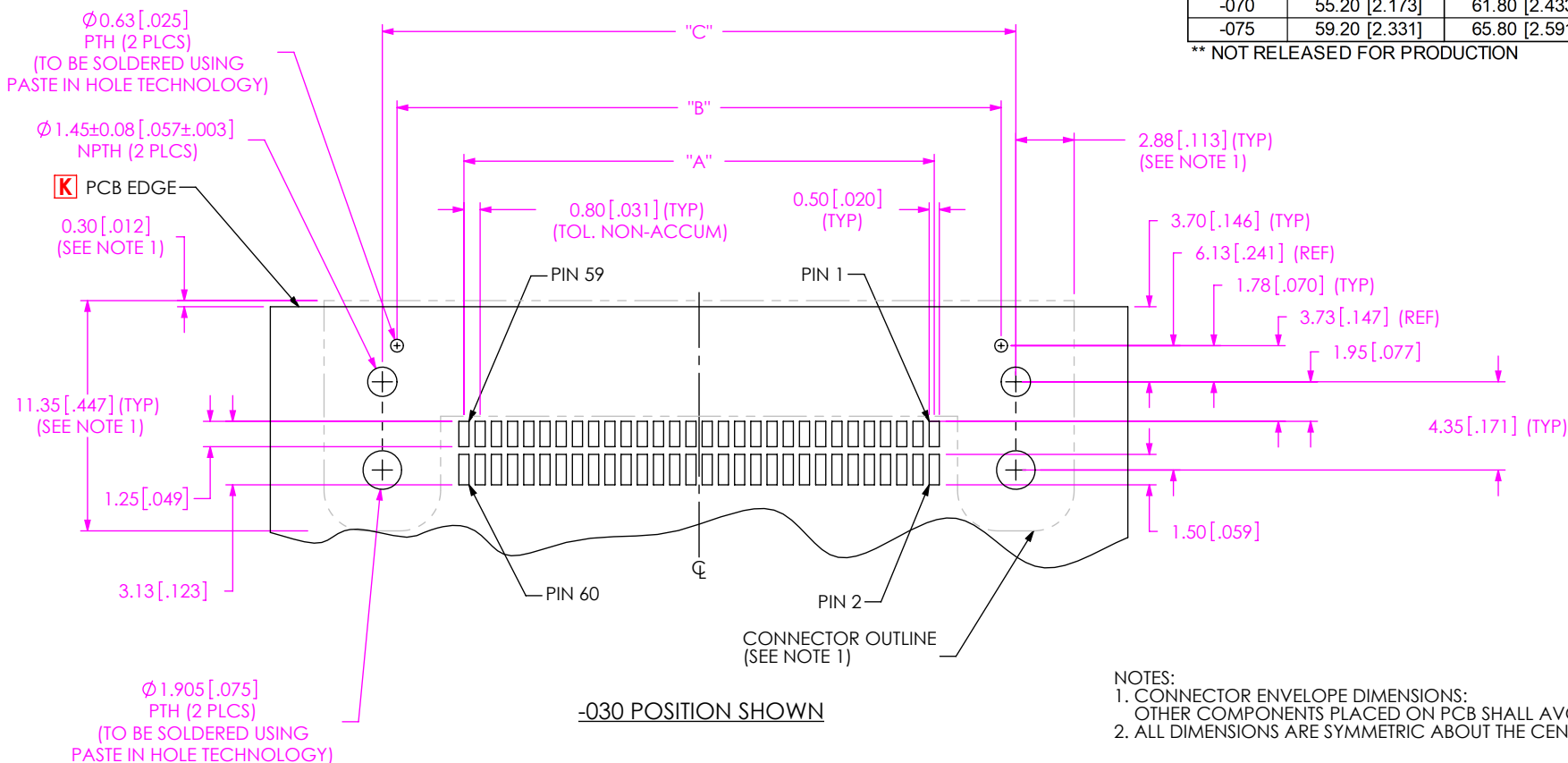


0086-755-83957316

DESIGNED & DIMENSIONED
IN MILLIMETERS [INCHES]

TABLE 1			
POSITION	"A"	"B"	"C"
-010	7.20 [.283]	13.80 [.543]	15.25 [.600]
-011	8.00 [.315]	14.60 [.574]	16.05 [.632]
-013	9.60 [.378]	16.20 [.638]	17.65 [.695]
-020	15.20 [.598]	21.80 [.858]	23.25 [.915]
-025	19.20 [.756]	25.80 [1.016]	27.25 [1.073]
-030	23.20 [.913]	29.80 [1.173]	31.25 [1.230]
-37	28.80 [1.134]	35.40 [1.394]	36.85 [1.451]
-040	31.20 [1.228]	37.80 [1.488]	39.25 [1.545]
-049	38.40 [1.512]	45.00 [1.772]	46.45 [1.829]
-050	39.20 [1.543]	45.80 [1.803]	47.25 [1.860]
** -053	41.60 [1.638]	48.20 [1.898]	49.65 [1.955]
-060	47.20 [1.858]	53.80 [2.118]	55.25 [2.175]
-070	55.20 [2.173]	61.80 [2.433]	63.25 [2.490]
-075	59.20 [2.331]	65.80 [2.591]	67.25 [2.648]

** NOT RELEASED FOR PRODUCTION



* PROPRIETARY NOTE *
 THIS DOCUMENT CONTAINS CONFIDENTIAL AND PROPRIETARY INFORMATION AND ALL DESIGN, MANUFACTURING, REPRODUCTION, USE, PATENT RIGHTS AND SALES RIGHTS ARE EXPRESSLY RESERVED BY SAMTEC, INC. THIS DOCUMENT SHALL NOT BE DISCLOSED, IN WHOLE OR IN PART, TO ANY UNAUTHORIZED PERSON OR ENTITY NOR REPRODUCED, TRANSFERRED OR INCORPORATED IN ANY OTHER PROJECT IN ANY MANNER WITHOUT THE EXPRESS WRITTEN CONSENT OF SAMTEC, INC.



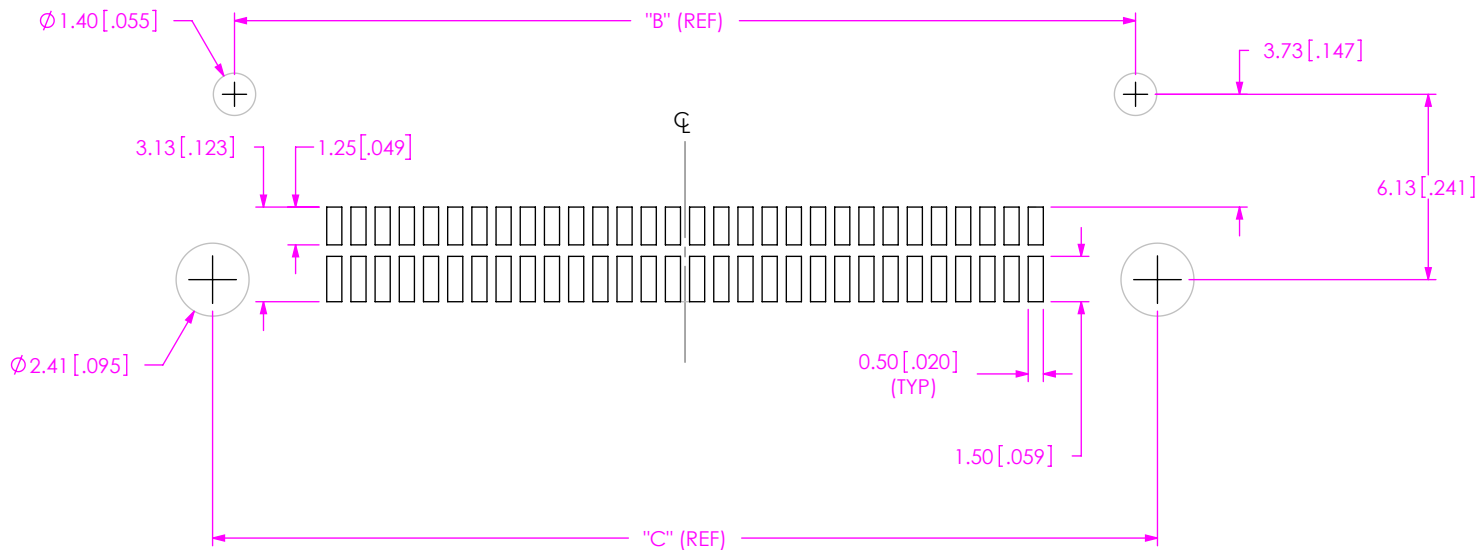
520 PARK EAST BLVD, NEW ALBANY, IN 47150
 PHONE: 812-944-6733 FAX: 812-948-5047
 e-Mail: info@SAMTEC.com code: 55322

DESIGNED & DIMENSIONED
IN MILLIMETERS [INCHES]

NOTE:
STENCIL TO BE 0.15 [.006] THICK.

TABLE 1			
POSITION	"A"	"B"	"C"
-010	7.20 [.283]	13.80 [.543]	15.25 [.600]
-011	8.00 [.315]	14.60 [.574]	16.05 [.632]
-013	9.60 [.378]	16.20 [.638]	17.65 [.695]
-020	15.20 [.598]	21.80 [.858]	23.25 [.915]
-025	19.20 [.756]	25.80 [1.016]	27.25 [1.073]
-030	23.20 [.913]	29.80 [1.173]	31.25 [1.230]
-37	28.80 [1.134]	35.40 [1.394]	36.85 [1.451]
-040	31.20 [1.228]	37.80 [1.488]	39.25 [1.545]
-049	38.40 [1.512]	45.00 [1.772]	46.45 [1.829]
-050	39.20 [1.543]	45.80 [1.803]	47.25 [1.860]
** -053	41.60 [1.638]	48.20 [1.898]	49.65 [1.955]
-060	47.20 [1.858]	53.80 [2.118]	55.25 [2.175]
-070	55.20 [2.173]	61.80 [2.433]	63.25 [2.490]
-075	59.20 [2.331]	65.80 [2.591]	67.25 [2.648]

** NOT RELEASED FOR PRODUCTION



-030 POSITION SHOWN

ALL DIMENSIONS ARE SYMMETRIC ABOUT THE CENTERLINE.

PROPRIETARY NOTE
THIS DOCUMENT CONTAINS CONFIDENTIAL AND PROPRIETARY INFORMATION AND ALL DESIGN, MANUFACTURING, REPRODUCTION, USE, PATENT RIGHTS AND SALES RIGHTS ARE EXPRESSLY RESERVED BY SAMTEC, INC. THIS DOCUMENT SHALL NOT BE DISCLOSED, IN WHOLE OR PART, TO ANY UNAUTHORIZED PERSON OR ENTITY NOR REPRODUCED, TRANSFERRED OR INCORPORATED IN ANY OTHER PROJECT IN ANY MANNER WITHOUT THE EXPRESS WRITTEN CONSENT OF SAMTEC, INC.



520 PARK EAST BLVD, NEW ALBANY, IN 47150
PHONE: 812-944-6733 FAX: 812-948-5047
e-Mail: info@SAMTEC.com code: 55322

Looking for pricing, stock, or lifecycle information?

Click below to explore more details on WIN SOURCE:

 [View ERF8-020-01-L-D-RA-L-TR on WIN SOURCE](#)

 [Samtec Inc. Information](#)

Optimize Your Supply Chain with WIN SOURCE Solutions

-  Global Sourcing Solution
-  Obsolete Management
-  Cost Control Management
-  Shortage Management
-  Alternative Solution
-  Excess Inventory Management