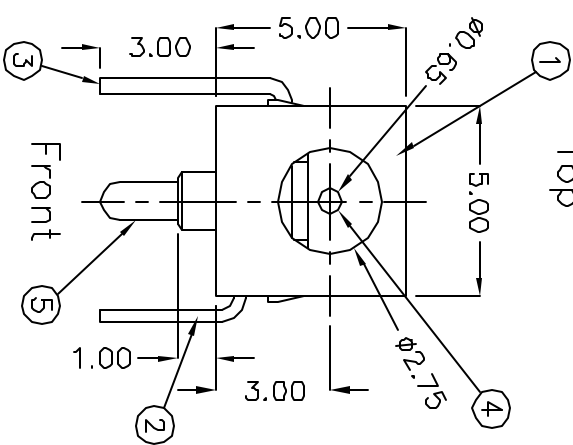
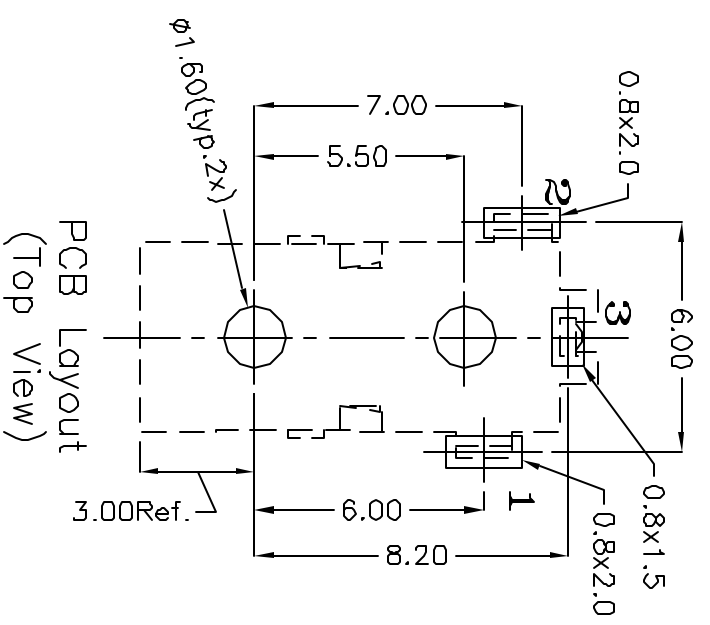
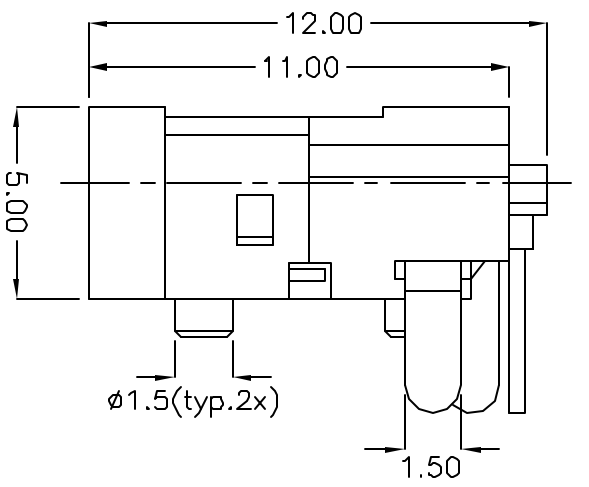
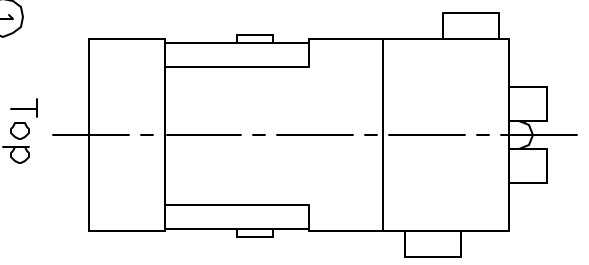




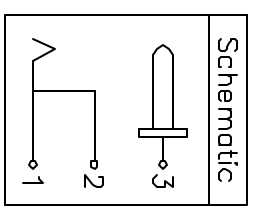
**THE DATASHEET OF
PJ-022**





- Specifications:
1. Insulation Resistance: 100MOhms min. (initial)
 2. Contact Resistance (initial): 30mOhm max at 100mA(max) 1KHz.
 3. Dielectric Withstand Voltage: AC 250V, 50 to 60Hz for 1 minute.
 4. Endurance: 5,000 Cycles 10 ~ 20 cycles per minute.
 5. Rated Voltage: 3.15 Volts DC
 6. Rated Current: 2.0 Amps DC
 7. Operating Temp: -25 to +85 deg. C.

5	Shield	SPCC	Nickel	1	40T
4	Center Pin	PBW	Silver	1	Ø0.65
3	Shunt Terminal	Brass	Silver	1	40T
2	Spring Contact	Ti-Cu Alloy	Silver	1	30T
1	Plastic Housing	Polyamide	Black Color	1	ULV94V-0
No.	Description	Material	Finish	Qty	Remark



CUI INC

9815 SW Allen, Suite 103
 Beaverton, OR 97005
 Phone: (503) 643-4899
 800-276-4899
 Fax: (503) 372-1266
 Website: www.cui.com


TITLE: **Ø0.65 DC Power Jack, PCB Mount**


PART NO. PU-022 UNITS: Millimeters

DRAWN BY: Todd White APPROVED BY: SCALE: 5x

Looking for pricing, stock, or lifecycle information?

Click below to explore more details on WIN SOURCE:

 [View PJ-022 on WIN SOURCE](#)

 [CUI Inc. Information](#)

Optimize Your Supply Chain with WIN SOURCE Solutions

-  Global Sourcing Solution
-  Obsolete Management
-  Cost Control Management
-  Shortage Management
-  Alternative Solution
-  Excess Inventory Management