



**THE DATASHEET OF
CM1453-06CP**



ON Semiconductor

Is Now

onsemi™

To learn more about onsemi™, please visit our website at
www.onsemi.com

onsemi and **onsemi** and other names, marks, and brands are registered and/or common law trademarks of Semiconductor Components Industries, LLC dba "**onsemi**" or its affiliates and/or subsidiaries in the United States and/or other countries. **onsemi** owns the rights to a number of patents, trademarks, copyrights, trade secrets, and other intellectual property. A listing of **onsemi** product/patent coverage may be accessed at www.onsemi.com/site/pdf/Patent-Marking.pdf. **onsemi** reserves the right to make changes at any time to any products or information herein, without notice. The information herein is provided "as-is" and **onsemi** makes no warranty, representation or guarantee regarding the accuracy of the information, product features, availability, functionality, or suitability of its products for any particular purpose, nor does **onsemi** assume any liability arising out of the application or use of any product or circuit, and specifically disclaims any and all liability, including without limitation special, consequential or incidental damages. Buyer is responsible for its products and applications using **onsemi** products, including compliance with all laws, regulations and safety requirements or standards, regardless of any support or applications information provided by **onsemi**. "Typical" parameters which may be provided in **onsemi** data sheets and/or specifications can and do vary in different applications and actual performance may vary over time. All operating parameters, including "Typicals" must be validated for each customer application by customer's technical experts. **onsemi** does not convey any license under any of its intellectual property rights nor the rights of others. **onsemi** products are not designed, intended, or authorized for use as a critical component in life support systems or any FDA Class 3 medical devices or medical devices with a same or similar classification in a foreign jurisdiction or any devices intended for implantation in the human body. Should Buyer purchase or use **onsemi** products for any such unintended or unauthorized application, Buyer shall indemnify and hold **onsemi** and its officers, employees, subsidiaries, affiliates, and distributors harmless against all claims, costs, damages, and expenses, and reasonable attorney fees arising out of, directly or indirectly, any claim of personal injury or death associated with such unintended or unauthorized use, even if such claim alleges that **onsemi** was negligent regarding the design or manufacture of the part. **onsemi** is an Equal Opportunity/Affirmative Action Employer. This literature is subject to all applicable copyright laws and is not for resale in any manner. Other names and brands may be claimed as the property of others.



Praetorian® 6-Channel EMI Filter Array with ESD Protection

CM1453-06CP

Features

- Six channels of EMI filtering
- $\pm 15\text{kV}$ ESD protection (IEC 61000-4-2, contact discharge)
- $\pm 30\text{kV}$ ESD protection (HBM)
- Greater than -40dB of attenuation at 1GHz
- Chip Scale Package (CSP) with 0.40mm pitch and 0.25mm CSP solder ball which features extremely low parasitic inductance for optimum filter and ESD performance
- *OptiGuard*™ Coating for improved reliability at assembly
- RoHS compliant

Applications

- LCD and Camera data lines in mobile handsets
- I/O port protection for mobile handsets, notebook computers, PDAs etc.
- EMI filtering for data ports in cell phones, PDAs or notebook computers.
- Wireless handsets
- Handheld PCs/PDAs
- LCD and camera modules

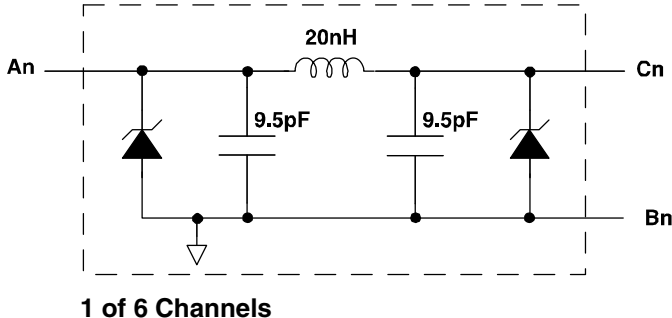
Product Description

The CM1453-06CP is a pi-style EMI filter array with ESD protection, which integrates filters (C-L-C) in CSP form factor with 0.40mm pitch. Each EMI filter channel of the CM1453-06CP is implemented as a 3-pole L-C filter where the component values are 9.5pF-20nH-9.5pF. The roll-off frequency at -6dB attenuation is 380MHz and can be used in applications where the data rates are as high as 160Mbps while providing greater than -35dB over the 800MHz to 2.7GHz frequency range. The parts include ESD diodes on every I/O pin, and provide a high level of protection against electrostatic discharge (ESD). The ESD protection diodes connected to the filter ports are designed and characterized to safely dissipate ESD strikes of $\pm 15\text{kV}$, beyond the maximum requirement of the IEC61000-4-2 international standard. Using the MIL-STD-883 (Method 3015) specification for Human Body Model (HBM) ESD, the pins are protected for contact discharges at greater than $\pm 30\text{kV}$.

This device is particularly well suited for wireless handsets, mobile LCD modules and PDAs because of its small package format and easy-to-use pin assignments. In particular, the CM1453-06CP is ideal for EMI filtering and protecting data and control lines for the LCD display and camera interface in mobile handsets.

The CM1453-06CP incorporates *OptiGuard*™ which results in improved reliability at assembly. It is manufactured with a 0.40mm pitch and 0.25mm CSP solder ball to provide up to 28% board space savings vs. competing CSP devices with 0.50mm pitch and 0.30mm CSP solder ball.

Electrical Schematic



PACKAGE / PINOUT DIAGRAMS

TOP VIEW
(Bumps Down View)

BOTTOM VIEW
(Bumps Up View)

CM1453-06CP
15-bump CSP

Notes:
1) These drawings are not to scale.

PIN DESCRIPTIONS

| PIN NUMBER | PIN DESCRIPTION | PIN NUMBER | PIN DESCRIPTION |
|------------|-----------------|------------|-----------------|
| A1 | Filter #1 | C1 | Filter #1 |
| A2 | Filter #2 | C2 | Filter #2 |
| A3 | Filter #3 | C3 | Filter #3 |
| A4 | Filter #4 | C4 | Filter #4 |
| A5 | Filter #5 | C5 | Filter #5 |
| A6 | Filter #6 | C6 | Filter #6 |
| B1 | GND | - | |
| B2 | GND | - | |
| B3 | GND | - | |

CM1453-06CP

Ordering Information

| PART NUMBERING INFORMATION | | | |
|----------------------------|---------|-----------------------------------|--------------|
| Bumps | Package | Lead-free Finish | |
| | | Ordering Part Number ¹ | Part Marking |
| 15 | CSP | CM1453-06CP | N536 |

Note 1: Parts are shipped in Tape & Reel form unless otherwise specified.

Specifications

| ABSOLUTE MAXIMUM RATINGS | | |
|---------------------------|-------------|-------|
| PARAMETER | RATING | UNITS |
| Storage Temperature Range | -65 to +150 | °C |
| DC current per Inductor | 30 | mA |
| DC Package Power Rating | 0.5 | W |

| STANDARD OPERATING CONDITIONS | | |
|-------------------------------|------------|-------|
| PARAMETER | RATING | UNITS |
| Operating Temperature Range | -40 to +85 | °C |

ELECTRICAL OPERATING CHARACTERISTICS (NOTE 1)

| SYMBOL | PARAMETER | CONDITIONS | MIN | TYP | MAX | UNITS |
|------------|--|---|----------------------|-------------|-------------|----------------------|
| L_{TOT} | Total Channel Inductance | | | 20 | | nH |
| C_{TOT} | Total Channel Capacitance ($C_1 \times 2$) | 2.5V dc; 1MHz, 30mV ac | 15.2 | 19 | 22.8 | pF |
| C_1 | Capacitance | 2.5V dc; 1MHz, 30mV ac | | 9.5 | | pF |
| V_{ST} | Stand-off Voltage | $I = 10\mu A$ | 5.5 | | | V |
| I_{LEAK} | Diode Leakage Current | $V_{IN} = 3.3V$ | | 0.1 | 1.0 | μA |
| V_{SIG} | Signal Clamp Voltage Positive Clamp Negative Clamp | $I_{LOAD} = 10mA$ $I_{LOAD} = -10mA$ | 5.6 -1.5 | 6.8 -0.8 | 9.0 -0.4 | V V |
| V_{ESD} | In-system ESD Withstand Voltage a) Human Body Model, MIL-STD-883, Method 3015 b) Contact Discharge per IEC 61000-4-2 Level 4 | Notes 2 and 3 | ± 30 ± 15 | | | kV kV |
| f_C | Cut-off frequency $Z_{SOURCE} = 50\Omega$, $Z_{LOAD} = 50\Omega$ | | | 300 | | MHz |
| f_C | Roll-off frequency at -6dB Attenuation $Z_{SOURCE} = 50\Omega$, $Z_{LOAD} = 50\Omega$ | | | 380 | | MHz |
| R_{DYN} | Dynamic Resistance Positive Negative | | | 2.3 0.9 | | Ω Ω |

Note 1: $T_A = 25^\circ C$ unless otherwise specified.

Note 2: ESD applied to input and output pins with respect to GND, one at a time.

Note 3: Unused pins are left open.

Performance Information

Typical Filter Performance (nominal conditions unless specified otherwise, 50 Ohm Environment)

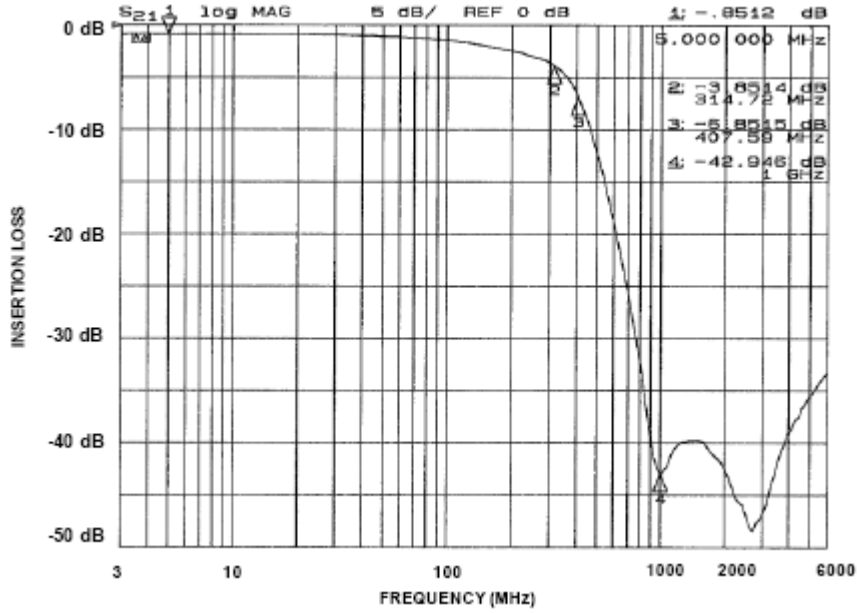


Figure 1. Insertion Loss VS. Frequency (CM1453-06: Filter 1)

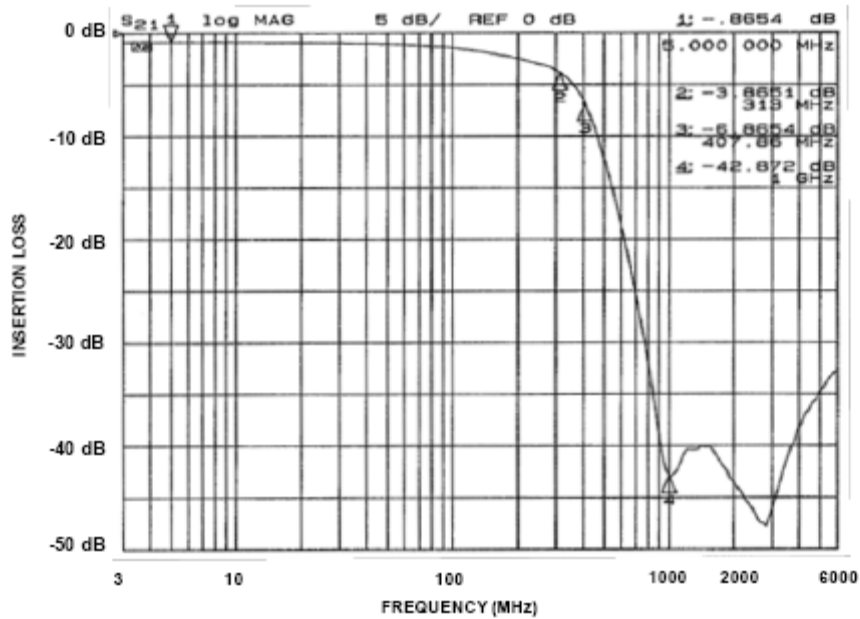


Figure 2. Insertion Loss VS. Frequency (CM1453-06: Filter 2)

Performance Information (cont'd)

Typical Filter Performance (nominal conditions unless specified otherwise, 50 Ohm Environment)

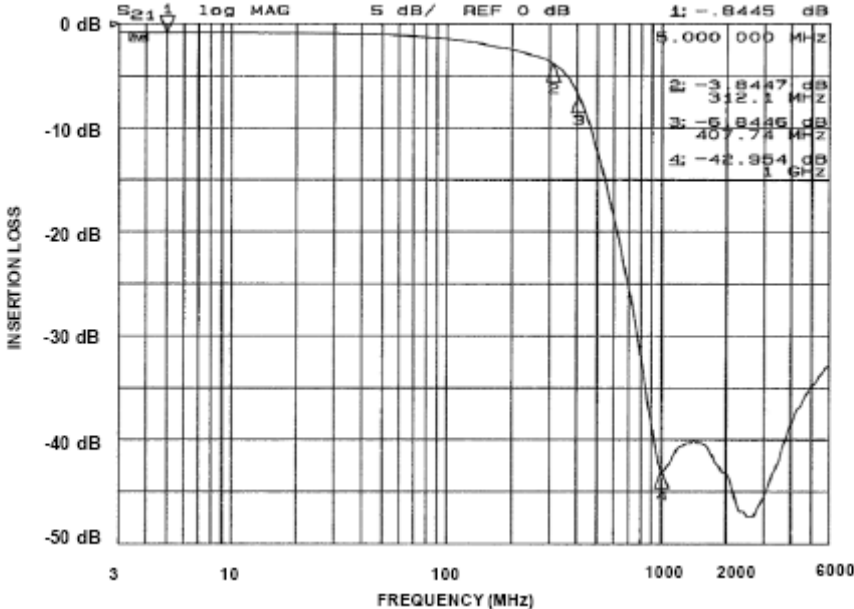


Figure 3. Insertion Loss VS. Frequency (CM1453-06: Filter 3)

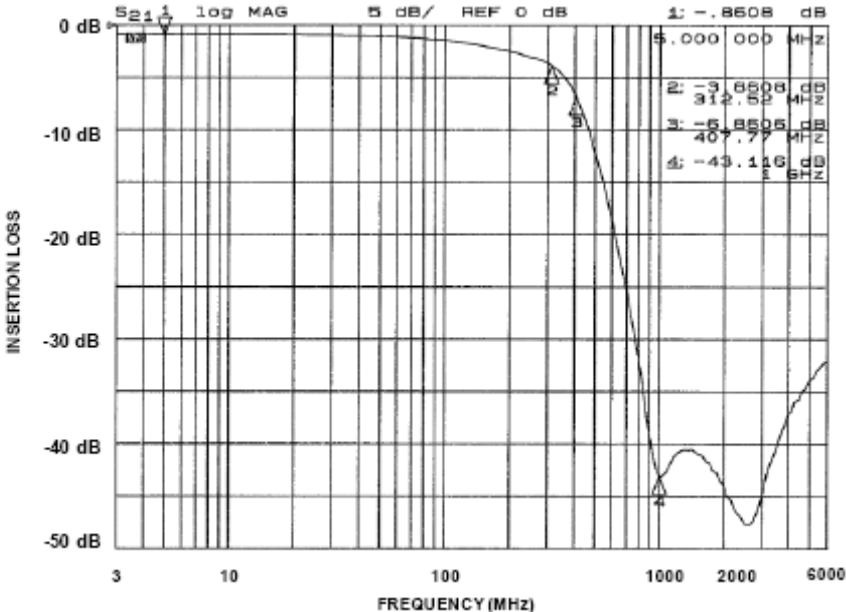


Figure 4. Insertion Loss VS. Frequency (CM1453-06: Filter 4)

Performance Information (cont'd)

Typical Filter Performance (nominal conditions unless specified otherwise, 50 Ohm Environment)

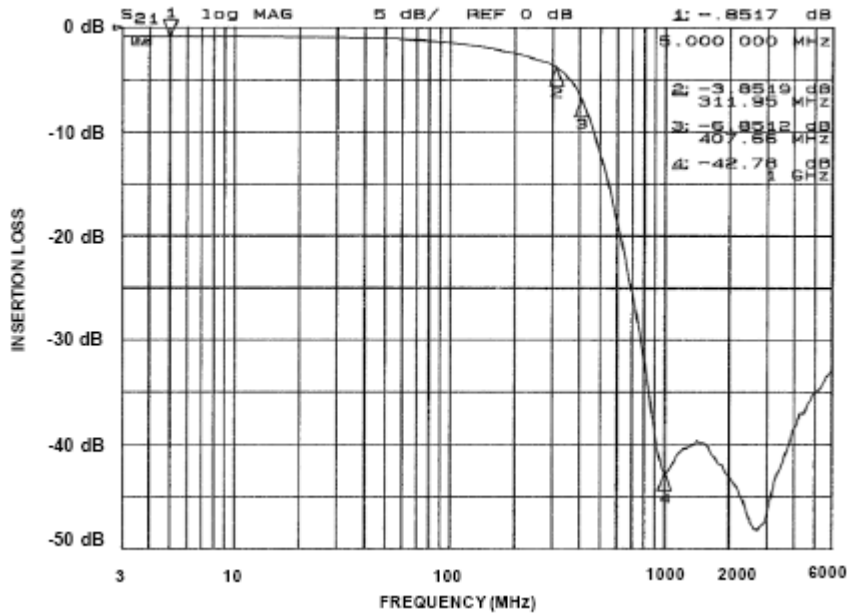


Figure 5. Insertion Loss VS. Frequency (CM1453-06: CSP1 – Filter 5)

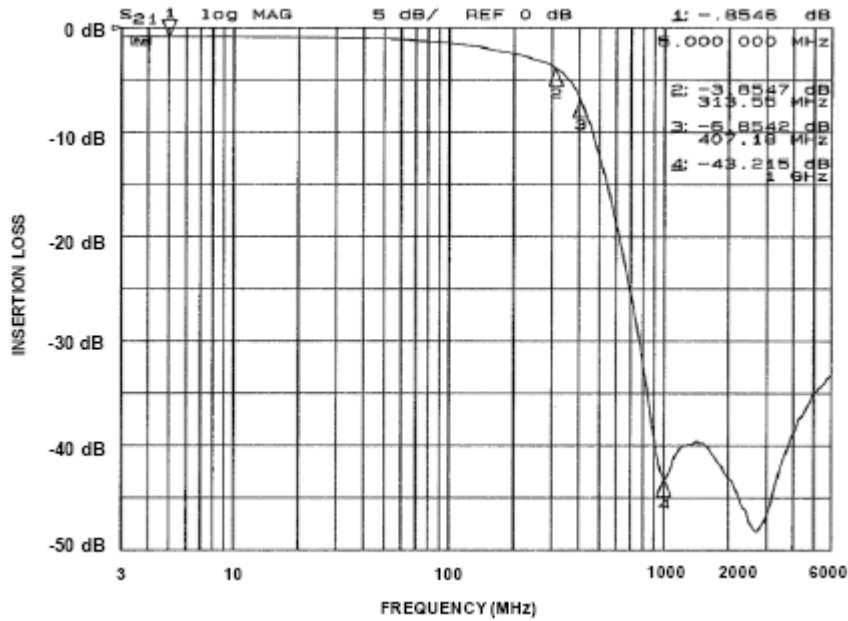


Figure 6. Insertion Loss VS. Frequency (CM1453-06: CSP1 – Filter 6)

Performance Information (cont'd)

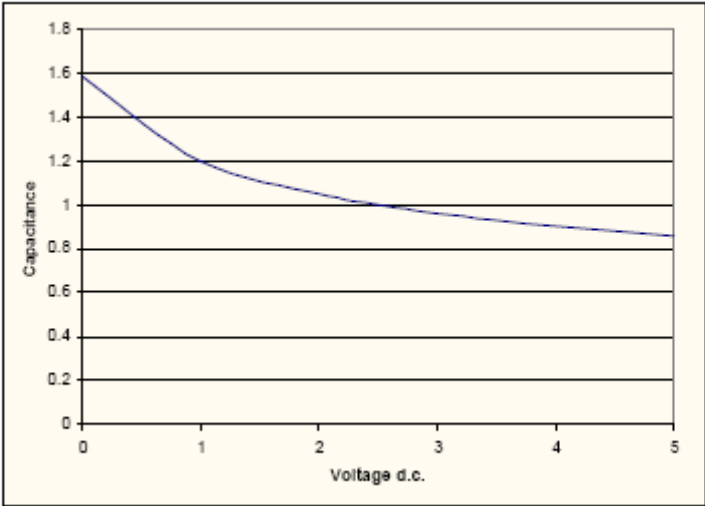


Figure 7. Typical Diode Capacitance vs. Input Voltage (normalized to 2.5V d.c)

Application Information

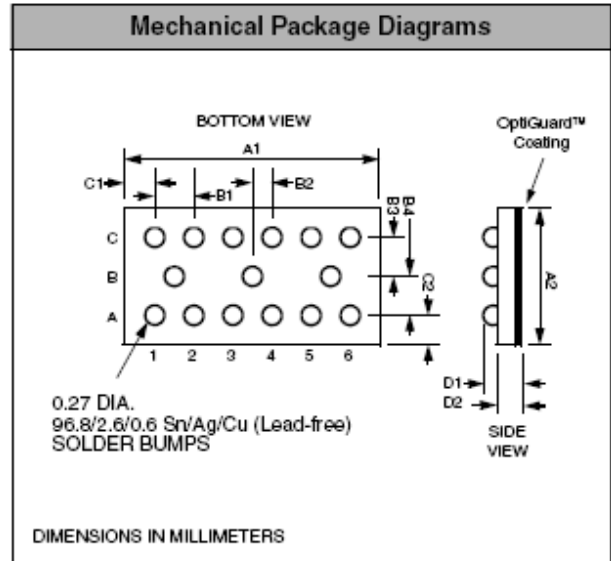
Refer to Application Note AP-217, "The Chip Scale Package", for a detailed description of Chip Scale Packages offered by California Micro Devices. See <http://www.wlcsforum.org/documents/pdf/ap-217.pdf> for download.

CM1453-06CP

Mechanical Specifications

CM1453 devices are packaged in custom Chip Scale Packages (CSP). See Application Note AP-217 for more information at: <http://www.wlcsforum.org/documents/pdf/ap-217.pdf>.

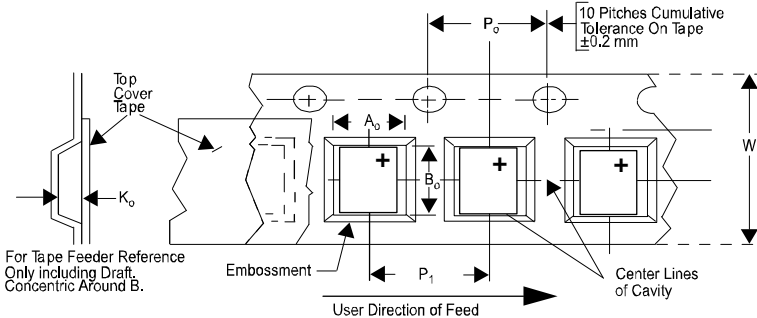
| PACKAGE DIMENSIONS | | | | | | |
|------------------------------------|-------------|-------|-------|--------|--------|--------|
| Package | Custom CSP | | | | | |
| Bumps | 15 | | | | | |
| Dim | Millimeters | | | Inches | | |
| | Min | Nom | Max | Min | Nom | Max |
| A1 | 2.429 | 2.474 | 2.519 | 0.0956 | 0.0974 | 0.0992 |
| A2 | 1.099 | 1.144 | 1.189 | 0.0433 | 0.0450 | 0.0468 |
| B1 | 0.395 | 0.400 | 0.405 | 0.0156 | 0.0157 | 0.0159 |
| B2 | 0.195 | 0.200 | 0.205 | 0.0077 | 0.0079 | 0.0081 |
| B3 | 0.342 | 0.347 | 0.352 | 0.0135 | 0.0137 | 0.0139 |
| B4 | 0.342 | 0.347 | 0.352 | 0.0135 | 0.0137 | 0.0139 |
| C1 | 0.187 | 0.237 | 0.287 | 0.0074 | 0.0093 | 0.0113 |
| C2 | 0.175 | 0.225 | 0.275 | 0.0069 | 0.0089 | 0.0108 |
| D1 | 0.545 | 0.615 | 0.685 | 0.0215 | 0.0242 | 0.0270 |
| D2 | 0.368 | 0.419 | 0.470 | 0.0145 | 0.0165 | 0.0185 |
| # per tape and reel | 3500 pieces | | | | | |
| Controlling dimension: millimeters | | | | | | |



**Package Dimensions for
CM1453-06CP Chip Scale Package**

CSP Tape and Reel Specifications

| PART NUMBER | CHIP SIZE (mm) | POCKET SIZE (mm) B ₀ X A ₀ X K ₀ | TAPE WIDTH W | REEL DIAMETER | QTY PER REEL | P ₀ | P ₁ |
|-------------|--------------------|--|-----------------|------------------|-----------------|----------------|----------------|
| CM1453-06CP | 2.47 X 1.14X 0.615 | 2.59 X 1.27 X 0.73 | 8mm | 178mm (7") | 3500 | 4mm | 4mm |



ON Semiconductor and are registered trademarks of Semiconductor Components Industries, LLC (SCILLC). SCILLC reserves the right to make changes without further notice to any products herein. SCILLC makes no warranty, representation or guarantee regarding the suitability of its products for any particular purpose, nor does SCILLC assume any liability arising out of the application or use of any product or circuit, and specifically disclaims any and all liability, including without limitation special, consequential or incidental damages. "Typical" parameters which may be provided in SCILLC data sheets and/or specifications can and do vary in different applications and actual performance may vary over time. All operating parameters, including "Typicals" must be validated for each customer application by customer's technical experts. SCILLC does not convey any license under its patent rights nor the rights of others. SCILLC products are not designed, intended, or authorized for use as components in systems intended for surgical implant into the body, or other applications intended to support or sustain life, or for any other application in which the failure of the SCILLC product could create a situation where personal injury or death may occur. Should Buyer purchase or use SCILLC products for any such unintended or unauthorized application, Buyer shall indemnify and hold SCILLC and its officers, employees, subsidiaries, affiliates, and distributors harmless against all claims, costs, damages, and expenses, and reasonable attorney fees arising out of, directly or indirectly, any claim of personal injury or death associated with such unintended or unauthorized use, even if such claim alleges that SCILLC was negligent regarding the design or manufacture of the part. SCILLC is an Equal Opportunity/Affirmative Action Employer. This literature is subject to all applicable copyright laws and is not for resale in any manner.

PUBLICATION ORDERING INFORMATION

LITERATURE FULFILLMENT:
 Literature Distribution Center for ON Semiconductor
 P.O. Box 5163, Denver, Colorado 80217 USA
Phone: 303-675-2175 or 800-344-3860 Toll Free USA/Canada
Fax: 303-675-2176 or 800-344-3867 Toll Free USA/Canada
Email: orderlit@onsemi.com

N. American Technical Support: 800-282-9855
 Toll Free USA/Canada
Europe, Middle East and Africa Technical Support:
 Phone: 421 33 790 2910
Japan Customer Focus Center
 Phone: 81-3-5773-3850

ON Semiconductor Website: www.onsemi.com
 Order Literature: <http://www.onsemi.com/orderlit>
 For additional information, please contact your local Sales Representative

Looking for pricing, stock, or lifecycle information?

Click below to explore more details on WIN SOURCE:

 [View CM1453-06CP](#) on WIN SOURCE

 [ON Semiconductor](#) Information

Optimize Your Supply Chain with WIN SOURCE Solutions

-  Global Sourcing Solution
-  Obsolete Management
-  Cost Control Management
-  Shortage Management
-  Alternative Solution
-  Excess Inventory Management