

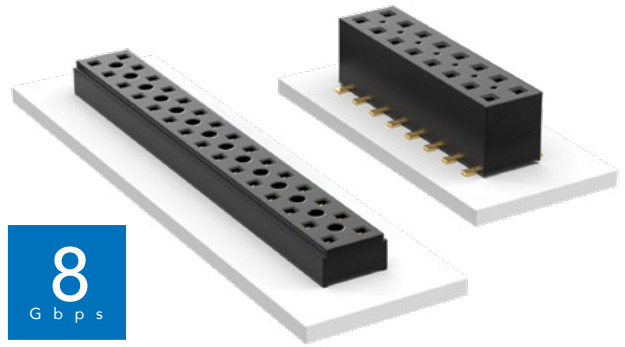


**THE DATASHEET OF  
CLT-108-02-F-D-BE**



# COST-EFFECTIVE & DUAL WIPE SOCKETS

(2.00 mm) .0787" PITCH • TLE/CLT SERIES



## TLE

**Mates:**  
TMMH, TMM, MTMM,  
MMT, TW, LTMM, ZLTMM,  
TCMD, TSH

## CLT

**Mates:**  
TMM, TMMH, MTMM,  
MMT, TW, TSH

### SPECIFICATIONS

#### TLE

**Insulator Material:**  
Black Liquid Crystal Polymer  
**Contact Material:**  
Phosphor Bronze  
**Plating:**  
Au over 50 μ" (1.27 μm) Ni  
**Current Rating (TLE/TMMH):**  
3.2 A per pin  
(2 pins powered)  
**Operating Temp Range:**  
-55 °C to +125 °C  
**Insertion Depth:**  
(2.08 mm) .082" to  
(4.37 mm) .172" with  
(0.38 mm) .015" wipe,  
pass-through, or  
(3.35 mm) .132" min  
for bottom entry

#### CLT

Same as TLE except:  
**Plating:**  
Sn or Au over 50 μ" (1.27 μm) Ni  
**Current Rating (TMMH/CLT):**  
4.1 A per pin  
(2 pins powered)  
**Insertion Depth:**  
Top Entry=  
(1.40 mm) .055" minimum  
Bottom Entry=  
(2.57 mm) .101" minimum  
(add board thickness for  
correct post OAL)  
**Max Cycles:**  
100 with 10 μ" (0.25 μm) Au

### PROCESSING

#### TLE

**Lead-Free Solderable:**  
Yes  
**SMT Lead Coplanarity:**  
(0.10 mm) .004" max (02-26)  
(0.15 mm) .006" max (27-50)\*  
\*(.004" stencil solution  
may be available; contact  
ipg@samtec.com)

#### CLT

Same as TLE except:  
**SMT Lead Coplanarity:**  
(0.10 mm) .004" max (02-25)  
(0.15 mm) .006" max (26-34)\*  
(0.20 mm) .008" max (35-50)\*  
\*(.004" stencil solution  
may be available; contact  
ipg@samtec.com)

**Note:**  
Some lengths, styles and  
options are non-standard,  
non-returnable.

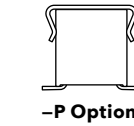
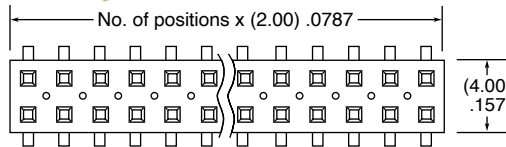
TLE	- 1	NO. PINS PER ROW	- 01	PLATING OPTION	- DV	OPTIONS
-----	-----	------------------	------	----------------	------	---------



02 thru 50

**-G**  
= 10 μ" (0.25 μm)  
Gold

**-A**  
= Alignment Pin  
(3 positions minimum)  
**-K**  
= (5.00 mm) .197" DIA  
Polyimide Film Pick & Place Pad  
(3 positions minimum)



**-P Option**

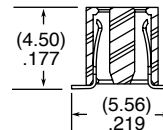


**-A Option**

**-P**  
= Metal Pick & Place Pad  
(4 positions minimum)

**-TR**  
= Tape & Reel Packaging  
(2-37 positions only)

**-FR**  
= Full Reel Tape & Reel  
(must order maximum  
quantity per reel; contact  
Samtec for quantity breaks)  
(2-37 positions only)



CLT	- 1	NO. PINS PER ROW	- LEAD STYLE	PLATING OPTION	- D	OTHER OPTIONS
-----	-----	------------------	--------------	----------------	-----	---------------



02 thru 50

**-01**  
= Through-hole

**-F**  
= Gold flash  
on contact,  
Matte Tin on tail

All options require  
Style -02

**-BE**  
= Bottom Entry  
(Required for bottom  
entry applications)

**ALSO AVAILABLE**  
MOQ Required

Other Platings

**-02**  
= Surface  
Mount

**-L**  
= 10 μ" (0.25 μm)  
Gold on contact,  
Matte Tin on tail

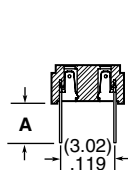
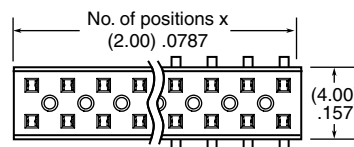
**-A**  
= Alignment Pin  
(3 positions minimum)  
Metal or plastic at  
Samtec's discretion

**-03**  
= Through-hole

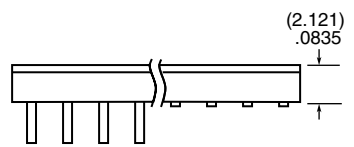
**-G**  
= 10 μ" (0.25 μm)  
Gold on contact,  
Gold flash on tail

**-K**  
= (5.00 mm) .197" DIA  
Polyimide Film  
Pick & Place Pad  
(04 thru 50 only)

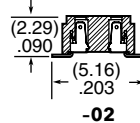
**-P**  
= Pick & Place Pad  
(4 positions minimum)  
(Not always necessary  
for auto placement.)



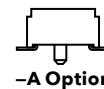
**-01 or -03**



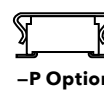
LEAD STYLE	A
-01	(2.16) .085
-03	(2.95) .116



**-02**



**-A Option**



**-P Option**

**-TR**  
= Tape & Reel  
(36 positions max)

**-FR**  
= Full Reel Tape & Reel  
(must order maximum  
quantity per reel;  
contact Samtec for  
quantity breaks)  
(36 positions max)

## Looking for pricing, stock, or lifecycle information?

Click below to explore more details on WIN SOURCE:

 [View CLT-108-02-F-D-BE on WIN SOURCE](#)

 [Samtec Inc. Information](#)

## Optimize Your Supply Chain with WIN SOURCE Solutions

-  Global Sourcing Solution
-  Obsolete Management
-  Cost Control Management
-  Shortage Management
-  Alternative Solution
-  Excess Inventory Management