



**THE DATASHEET OF  
CEFA203-G**

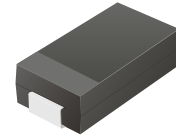


## CEFA201-G Thru. CEFA203-G

Reverse Voltage: 50 to 200 Volts

Forward Current: 2.0 Amp

RoHS Device

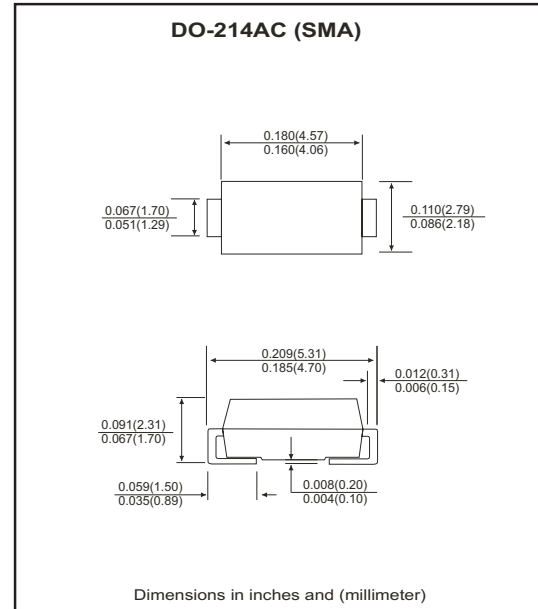


### Features

- Ideal for surface mount applications.
- Easy pick and place.
- Plastic package has Underwriters Lab. flammability classification 94V-0.
- Super fast recovery time for high efficient.
- Built-in strain relief.
- Low forward voltage drop.

### Mechanical data

- Case: JEDEC DO-214AC, molded plastic.
- Terminals: solderable per MIL-STD-750, method 2026.
- Polarity: Color band denotes cathode end.
- Approx. weight: 0.063 grams



### Maximum Ratings and Electrical Characteristics

Parameter	Symbol	CEFA201-G	CEFA202-G	CEFA203-G	Units
Max. repetitive peak reverse voltage	$V_{RRM}$	50	100	200	V
Max. DC blocking voltage	$V_{DC}$	50	100	200	V
Max. RMS voltage	$V_{RMS}$	35	70	140	V
Peak surge forward current, 8.3ms single half sine-wave superimposed on rate load (JEDEC method)	$I_{FSM}$	50			A
Max. average forward current	$I_o$	2.0			A
Max. instantaneous forward voltage at 2.0A	$V_F$	0.92			V
Reverse recovery time	$T_{rr}$	25			nS
Max. DC reverse current at $T_A=25^{\circ}C$ rated DC blocking voltage $T_A=100^{\circ}C$	$I_R$	5.0 100			$\mu A$
Max. thermal resistance (Note 1)	$R_{\theta JL}$	55			$^{\circ}C/W$
Max. operating junction temperature	$T_J$	150			$^{\circ}C$
Storage temperature	$T_{STG}$	-55 to +150			$^{\circ}C$

Notes: 1. Thermal resistance from junction to lead mounted on P.C.B. with 8.0×8.0 mm copper<sup>2</sup> pad area.

## RATING AND CHARACTERISTIC CURVES (CEFA201-G thru CEFA203-G)

Fig.1 Reverse Characteristics

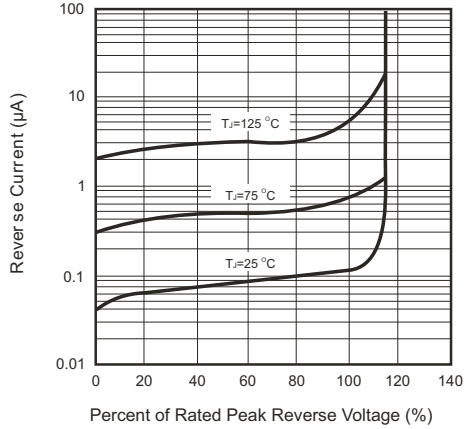


Fig.2 Forward Characteristics

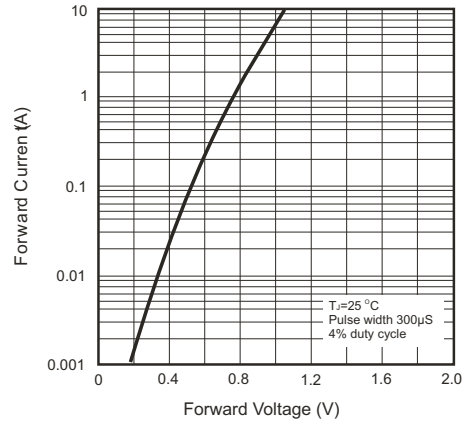


Fig.3 Current Derating Curve



Fig.4 Non-repetitive Forward Surge Current

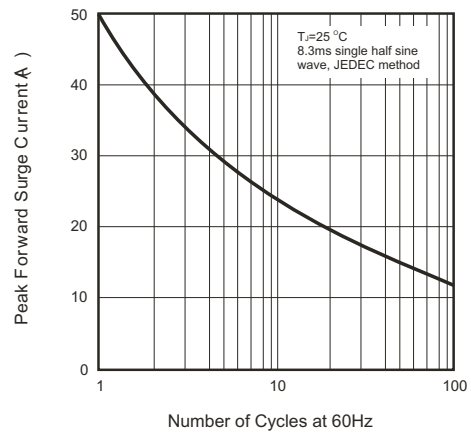
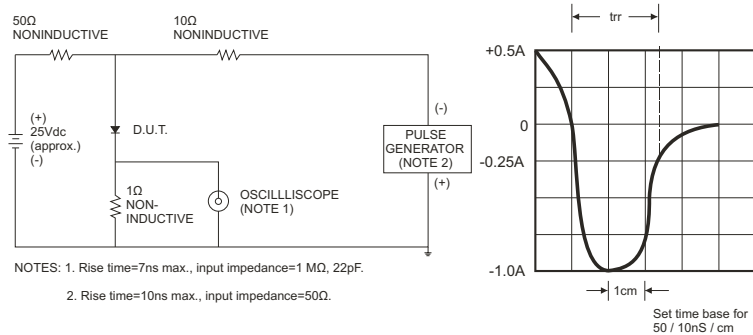




Fig.5 Test Circuit Diagram and Reverse Recovery Time Characteristics



## Looking for pricing, stock, or lifecycle information?

Click below to explore more details on WIN SOURCE:

-  [View CEFA203-G on WIN SOURCE](#)
-  [Comchip Technology Information](#)

## Optimize Your Supply Chain with WIN SOURCE Solutions

-  Global Sourcing Solution
-  Obsolete Management
-  Cost Control Management
-  Shortage Management
-  Alternative Solution
-  Excess Inventory Management