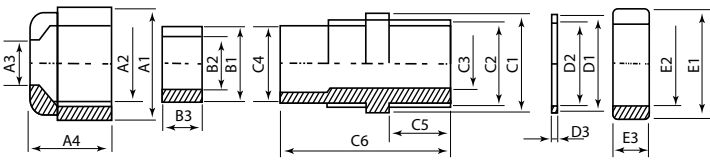




**THE DATASHEET OF
BC-B60-BP**



Cable Glands



NPT Series Specifications

| | |
|---------------------|---|
| Material | PL (Nylon), UL94 |
| Working Temperature | -40°C to 100°C (-40°F to 212°F) in static state instantaneous heat resistance up to 120°C -20°C to 80°C (-4°F to 176°F) in dynamic state - Instantaneous heat resistance up to 100°C |
| Hermetic Seal | NBR |

Part Numbers and Size

| SIZE CABLE Ømm | MODEL | |
|-------------------|---------------|---------------|
| | Beige | Black |
| 3.5 ~ 6 | BC-PG-7 -G | BC-PG-7 -B |
| 4 ~ 8 | BC-PG-9 -G | BC-PG-9 -B |
| 5 ~ 10 | BC-PG-11 -G | BC-PG-11 -B |
| 6 ~ 12 | BC-PG-13.5 -G | BC-PG-13.5 -B |
| 10 ~ 14 | BC-PG-16 -G | BC-PG-16 -B |
| 12 ~ 15 | BC-PG-19 -G | BC-PG-19 -B |
| 13 ~ 18 | BC-PG-21 -G | BC-PG-21 -B |
| 15 ~ 19 | BC-PG-25 -G | BC-PG-25 -B |
| 18 ~ 25 | BC-PG-29 -G | BC-PG-29 -B |
| 22 ~ 32 | BC-PG-36 -G | BC-PG-36 -B |
| 30 ~ 38 | BC-PG-42 -G | BC-PG-42 -B |
| 34 ~ 44 | BC-PG-48 -G | BC-PG-48 -B |
| 42 ~ 50 | BC-PG-63 -G | BC-PG-63 -B |

Dimensions

Unit: mm

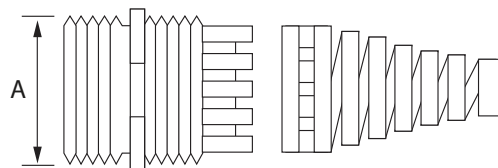
| Part Number | Ømm (cable) | A1 | A2 | A3 | A4 | B1 | B2 | B3 | C1 | C2 | C3 | C4 | C5 | C6 | D1 | D2 | D3 | E1 | E2 | E3 |
|-------------|-------------|------|------|------|------|------|------|------|------|------|------|------|------|------|------|------|-----|------|------|-----|
| BC-PG-7 | 3.5~6 | 17 | 12.5 | 7 | 15.5 | 8 | 6 | 7.5 | 17.5 | 12 | 8 | 8.5 | 8 | 29 | 17 | 11 | 1.5 | 19.5 | 12 | 5 |
| BC-PG-9 | 4~8 | 20.5 | 15.5 | 8.5 | 15 | 10.5 | 8 | 8.5 | 21 | 16 | 11 | 10.5 | 8 | 31.5 | 21 | 15.5 | 1.5 | 24 | 15.5 | 5 |
| BC-PG-11 | 5~10 | 24 | 18.5 | 10.5 | 16.5 | 13.5 | 9.5 | 8.5 | 24 | 18 | 14 | 14 | 8 | 33 | 24 | 18 | 1.5 | 26 | 18 | 5 |
| BC-PG-13.5 | 6~12 | 26.5 | 20.5 | 12.5 | 18.5 | 15.5 | 11.5 | 7.5 | 26 | 20 | 16 | 16 | 9 | 33.5 | 26 | 20 | 1.5 | 29 | 21.5 | 5.5 |
| BC-PG-16 | 10~14 | 29.5 | 22.5 | 14 | 18 | 17 | 13 | 9 | 29.5 | 22 | 17.5 | 18 | 10 | 36 | 29.5 | 21.5 | 1.5 | 32.5 | 22.5 | 6 |
| BC-PG-19 | 12~15 | 30 | 24.5 | 16 | 20 | 18 | 15 | 8.5 | 30 | 23.5 | 18.5 | 18.5 | 10 | 37 | 30 | 23 | 1.5 | 33 | 24.5 | 6 |
| BC-PG-21 | 13~18 | 36 | 29.5 | 18 | 23 | 21 | 17 | 10.5 | 36 | 28 | 22 | 22.5 | 10 | 41 | 36 | 27.5 | 1.5 | 39 | 27.5 | 6.5 |
| BC-PG-25 | 15~19 | 39 | 31 | 20.5 | 21 | 23 | 19 | 11 | 39 | 29.5 | 24 | 24 | 11 | 41 | 39 | 28.5 | 1.5 | 40 | 30 | 7 |
| BC-PG-29 | 18~25 | 45.5 | 37 | 25 | 25.5 | 29.5 | 24.5 | 14 | 45 | 36.5 | 30.5 | 30.5 | 12 | 46.5 | 45 | 36 | 1.5 | 49.5 | 37 | 7.2 |
| BC-PG-36 | 22~32 | 59 | 48.5 | 32 | 29.5 | 39 | 32.5 | 16 | 57.5 | 46.5 | 39.5 | 39.5 | 13.5 | 55 | 57.5 | 45 | 1.5 | 64.5 | 47 | 7.5 |
| BC-PG-42 | 30~38 | 67.5 | 56 | 38 | 30 | 46.5 | 39 | 16.5 | 66 | 53.5 | 47.5 | 45.5 | 14.5 | 56.5 | 66 | 52.5 | 2 | 69 | 54 | 7.9 |
| BC-PG-48 | 34~44 | 72 | 60.5 | 43.5 | 29.5 | 50 | 44 | 16.5 | 70.5 | 58.5 | 52 | 51 | 14 | 56.5 | 69.5 | 57.5 | 2 | 76 | 59 | 7.9 |
| BC-PG-63 | 42~50 | 76 | 67.2 | 49.7 | 39.8 | 60 | 53.3 | 18.8 | 76.5 | 70 | 61 | 58 | 27 | 77 | 70 | 65 | 3 | 81 | 68 | 9.2 |

Bend Proof Cable Glands

Part Numbers and Size

Unit: mm

| Part number | Cable Range | Screw width(A) | Mounting Hole |
|---------------|-------------|----------------|---------------|
| BC-BP-PG 7 | 3 ~ 5.5 | 12.5 | 12.5 ~ 12.8 |
| BC-BP-PG 9 | 8 ~ 4.5 | 15.2 | 15.2 ~ 15.5 |
| BC-BP-PG 11 | 6 ~ 10 | 18.6 | 18.6 ~ 18.9 |
| BC-BP-PG 13.5 | 7 ~ 12.5 | 20.4 | 20.4 ~ 20.7 |
| BC-BP-PG 16 | 8.5 ~ 14 | 22.5 | 22.5 ~ 22.8 |
| BC-BP-PG 21 | 12.5 ~ 18 | 28.3 | 28.3 ~ 28.7 |

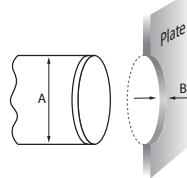
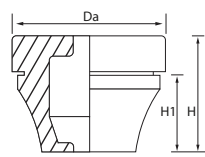


Part Numbers and Size

Unit: mm

| Part number | Thread | Cable | A | B | Da | H | H1 |
|-------------|--------|-------|----|-------|----|------|------|
| BC-RG-PG7 | 12.5 | 3~5 | 13 | 0.5~2 | 20 | 12.6 | 5.4 |
| BC-RG-PG9 | 15.2 | 5~7 | 16 | 1~4 | 21 | 17.8 | 10.3 |
| BC-RG-PG11 | 18.6 | 7~10 | 19 | 1~4 | 24 | 19.8 | 12.7 |
| BC-RG-PG16 | 22.5 | 10~14 | 23 | 1~4 | 28 | 21.6 | 14.7 |
| BC-RG-PG21 | 28.3 | 14~20 | 29 | 1~4 | 35 | 24.6 | 17.6 |
| BC-RG-PG29 | 37 | 20~26 | 38 | 1~4 | 46 | 28.5 | 20 |
| BC-RG-PG36 | 47 | 26~35 | 48 | 1~4 | 58 | 34.9 | 23.9 |

Rubber Grommet

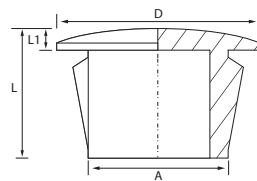


Part Numbers and Size

Unit: mm

| Part number | A | D | L1 | L |
|-------------|------|------|-----|------|
| BC-HP-PG8 | 7.8 | 11.9 | 1.6 | 8 |
| BC-HP-PG10 | 9.5 | 13 | 1.6 | 10.5 |
| BC-HP-PG13 | 12.7 | 16.9 | 1.6 | 10.5 |
| BC-HP-PG16 | 15.9 | 19.8 | 1.6 | 10.5 |
| BC-HP-PG19 | 19 | 22.9 | 1.6 | 10.5 |
| BC-HP-PG22 | 22.2 | 24.9 | 1.6 | 11.5 |
| BC-HP-PG26 | 25.5 | 28.3 | 1.6 | 11.5 |
| BC-HP-PG30 | 30 | 34.2 | 1.6 | 11.5 |

Hole Plug



Specifications

| | |
|-------------------|--|
| Material | PC(BC-CG), ABS(BC-AG) |
| Temperature range | ABS: -40°C to 86°C (-40°F to 185°F) |
| | UL94-HB Non-Flammable |
| | Polycarbonate: -40°C to 120°C (-40°F to 248°F) |
| | UL94-V-0~5VA(Grey) Non-flammable |
| Rated Current | 17A 240VAC |

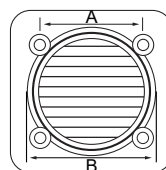
Ventilators



Part Numbers and Size

Unit: mm

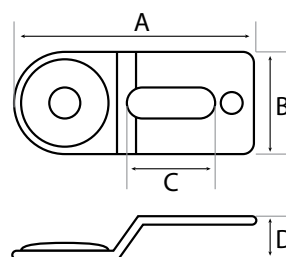
| Part number | A | Cut Out (B) | Fan Size |
|------------------------|-------------|-------------|----------|
| BC-AG-V60 BC-CG-V60 | 50 ±0.3mm | 63 ~ 65Φ | 60Φ |
| BC-AG-V80 BC-CG-V80 | 71.5 ±0.3mm | 88 ~ 90Φ | 80Φ |



Part Numbers and Size

Unit: mm

| Part number | A | B | C | D |
|-------------|----|----|----|---|
| B40 | 43 | 18 | 14 | 6 |
| B50 | 49 | 22 | 14 | 7 |
| B60 | 58 | 25 | 16 | 9 |



B40



B50



B60

Looking for pricing, stock, or lifecycle information?

Click below to explore more details on WIN SOURCE:

 [View BC-B60-BP on WIN SOURCE](#)

 [Boxco Information](#)

Optimize Your Supply Chain with WIN SOURCE Solutions

-  Global Sourcing Solution
-  Obsolete Management
-  Cost Control Management
-  Shortage Management
-  Alternative Solution
-  Excess Inventory Management