



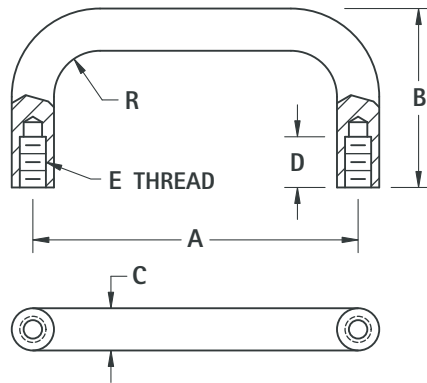
**THE DATASHEET OF**  
**9901**



# ROUND INSTRUMENTATION HANDLES



CHOICE of BRASS or ALUMINUM



**MATERIAL:**

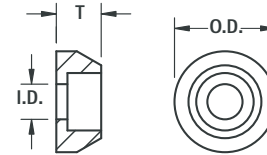
**Brass:** ASTM-B16, Nickel Plate  
**Aluminum:** QQ-A-200, Alloy 6061-T6,  
 Black Anodized per MIL-A-8625

| BRASS CAT. NO. | ALUMINUM CAT. NO. | A MTG. CTRS.  | B HEIGHT     | D DEPTH     | E THREAD | R RADIUS   | C DIAMETER        |             |       |            |                   |
|----------------|-------------------|---------------|--------------|-------------|----------|------------|-------------------|-------------|-------|------------|-------------------|
| 7140           | 7170              | 1.250 (31.8)  | 1.000 (25.4) | .375 (9.5)  | 4-40     | .156 (4.0) | <b>.156 (4.0)</b> |             |       |            |                   |
| 7141           | 7171              | 2.000 (50.8)  | 1.000 (25.4) |             |          |            |                   |             |       |            |                   |
| 7142           | 7172              | 3.000 (76.2)  | 1.000 (25.4) |             |          |            |                   |             |       |            |                   |
| 9100           | 9110              | 1.250 (31.8)  | .625 (15.9)  | .156 (4.0)  | 4-40     | .187 (4.7) | <b>.187 (4.7)</b> |             |       |            |                   |
| 9101           | 9111              | 1.500 (38.1)  | .625 (15.9)  |             |          |            |                   |             |       |            |                   |
| 9104           | 9114              | 1.500 (38.1)  | .750 (19.1)  |             |          |            |                   |             |       |            |                   |
| 9102           | 9112              | 1.750 (44.5)  | .625 (15.9)  |             |          |            |                   |             |       |            |                   |
| 9105           | 9115              | 1.750 (44.5)  | .750 (19.1)  |             |          |            |                   |             |       |            |                   |
| 9103           | 9113              | 2.000 (50.8)  | .625 (15.9)  |             |          |            |                   |             |       |            |                   |
| 9106           | 9116              | 1.250 (31.8)  | 1.000 (25.4) |             |          |            |                   |             |       |            |                   |
| 9107           | 9117              | 1.500 (38.1)  | 1.000 (25.4) | .250 (6.4)  | 6-32     | .187 (4.7) | <b>.187 (4.7)</b> |             |       |            |                   |
| 9108           | 9118              | 2.000 (50.8)  | 1.000 (25.4) |             |          |            |                   |             |       |            |                   |
| 9109           | 9119              | 3.000 (76.2)  | 1.000 (25.4) |             |          |            |                   |             |       |            |                   |
| 7143           | 7173              | 3.000 (76.2)  | 1.500 (38.1) |             |          |            |                   |             |       |            |                   |
| 485            | 515               | 3.000 (76.2)  | 1.750 (44.5) | .562 (14.3) | 8-32     | .250 (6.4) | <b>.250 (6.4)</b> |             |       |            |                   |
| 480            | 510               | 3.500 (88.9)  | 1.500 (38.1) |             |          |            |                   |             |       |            |                   |
| 7144           | 7174              | 4.000 (101.6) | 1.500 (38.1) |             |          |            |                   |             |       |            |                   |
| 486            | 516               | 4.000 (101.6) | 1.750 (44.5) |             |          |            |                   |             |       |            |                   |
| 481            | 511               | 4.500 (114.3) | 1.500 (38.1) |             |          |            |                   |             |       |            |                   |
| 487            | 517               | 4.500 (114.3) | 1.750 (44.5) |             |          |            |                   |             |       |            |                   |
| 482            | 512               | 5.000 (127.0) | 1.500 (38.1) |             |          |            |                   |             |       |            |                   |
| 488            | 518               | 5.000 (127.0) | 1.750 (44.5) |             |          |            |                   |             |       |            |                   |
| 483            | 513               | 5.500 (139.7) | 1.500 (38.1) |             |          |            |                   |             |       |            |                   |
| 484            | 514               | 6.000 (152.4) | 1.500 (38.1) |             |          |            |                   |             |       |            |                   |
| 489            | 519               | 6.000 (152.4) | 1.750 (44.5) |             |          |            |                   |             |       |            |                   |
| 7145           | 7175              | 3.000 (76.2)  | 1.500 (38.1) |             |          |            |                   | .562 (14.3) | 10-32 | .312 (7.9) | <b>.312 (7.9)</b> |
| 7146           | 7176              | 4.000 (101.6) | 1.500 (38.1) |             |          |            |                   |             |       |            |                   |
| 493            | 523               | 4.000 (101.6) | 1.750 (44.5) |             |          |            |                   |             |       |            |                   |
| 490            | 520               | 4.500 (114.3) | 1.500 (38.1) |             |          |            |                   |             |       |            |                   |
| 494            | 524               | 4.500 (114.3) | 1.750 (44.5) |             |          |            |                   |             |       |            |                   |
| 7147           | 7177              | 4.562 (115.9) | 1.500 (38.1) |             |          |            |                   |             |       |            |                   |
| 491            | 521               | 5.000 (127.0) | 1.500 (38.1) |             |          |            |                   |             |       |            |                   |
| 495            | 525               | 5.000 (127.0) | 1.750 (44.5) |             |          |            |                   |             |       |            |                   |
| 492            | 522               | 5.500 (139.7) | 1.500 (38.1) |             |          |            |                   |             |       |            |                   |
| 7148           | 7178              | 6.000 (152.4) | 1.500 (38.1) |             |          |            |                   |             |       |            |                   |
| 496            | 526               | 6.000 (152.4) | 1.750 (44.5) |             |          |            |                   |             |       |            |                   |
| 7149           | 7179              | 6.437 (163.5) | 1.750 (44.5) |             |          |            |                   |             |       |            |                   |
| 7150           | 7180              | 4.000 (101.6) | 1.375 (34.9) | .375 (9.5)  | 10-32    | .375 (9.5) | <b>.375 (9.5)</b> |             |       |            |                   |
| 7151           | 7181              | 6.000 (152.4) | 1.375 (34.9) |             |          |            |                   |             |       |            |                   |

# FERRULES

FERRULES FOR ROUND HANDLES

- To protect and support panel surface



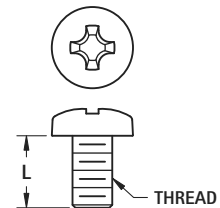
**MATERIAL:**

**Brass:** ASTM-B16, Nickel Plate  
**Aluminum:** QQ-A-200, Alloy 6061-T6, Black Anodized per MIL-A-8625

| BRASS CAT. NO. | ALUMINUM CAT. NO. | FOR THREAD | FOR DIAMETER | O.D.        | I.D.       | T          |
|----------------|-------------------|------------|--------------|-------------|------------|------------|
| 7162           | 7192              | 4-40       | .156 (4.0)   | .250 (6.4)  | .120 (3.0) | .125 (3.2) |
| 9120           | 9122              | 4-40       | .187 (4.7)   | .312 (7.9)  | .120 (3.0) | .125 (3.2) |
| 9121           | 9123              | 6-32       | .187 (4.7)   | .312 (7.9)  | .144 (3.7) | .125 (3.2) |
| 7163           | 7193              | 8-32       | .250 (6.4)   | .375 (9.5)  | .170 (4.3) | .187 (4.7) |
| 7164           | 7194              | 10-32      | .312 (7.9)   | .562 (14.3) | .196 (5.0) | .250 (6.4) |

# HANDLE MOUNTING SCREWS

- Phillips drive pan head machine screws





**MATERIAL:** Stainless Steel

| CAT. NO. | L LENGTH    | THREAD | DRIVER SIZE |
|----------|-------------|--------|-------------|
| 9900     | .250 (6.4)  | 4-40   | 1           |
| 9901     | .375 (9.5)  |        |             |
| 9902     | .500 (12.7) |        |             |
| 9903     | .250 (6.4)  | 6-32   | 2           |
| 9904     | .375 (9.5)  |        |             |
| 9905     | .500 (12.7) |        |             |
| 9906     | .375 (9.5)  | 8-32   | 2           |
| 9907     | .500 (12.7) |        |             |
| 9908     | .750 (19.1) |        |             |
| 9909     | .375 (9.5)  |        |             |
| 9910     | .500 (12.7) | 10-32  | 2           |
| 9911     | .750 (19.1) |        |             |

## Looking for pricing, stock, or lifecycle information?

Click below to explore more details on WIN SOURCE:

-  [View 9901 on WIN SOURCE](#)
-  [Keystone Electronics Information](#)

## Optimize Your Supply Chain with WIN SOURCE Solutions

-  Global Sourcing Solution
-  Obsolete Management
-  Cost Control Management
-  Shortage Management
-  Alternative Solution
-  Excess Inventory Management