



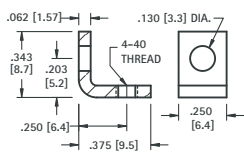
THE DATASHEET OF
631



THREADED MOUNTING BRACKETS

THREADED MOUNTING BRACKETS

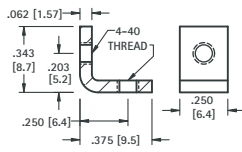
4-40 THREAD



CAT. NO. 612

MATERIAL:
.062 (1.57) Steel, Zinc Plate

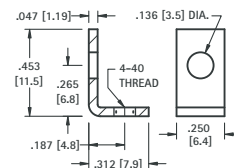
4-40 THREAD



CAT. NO. 621

MATERIAL:
.062 (1.57) Steel, Zinc Plate

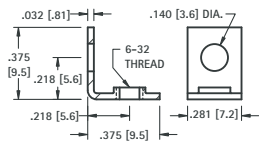
4-40 THREAD



CAT. NO. 616

MATERIAL:
.047 (1.19) Brass, Tin Plate

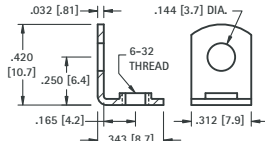
6-32 THREAD



CAT. NO. 634

MATERIAL:
.032 (.81) Brass, Nickel Plate

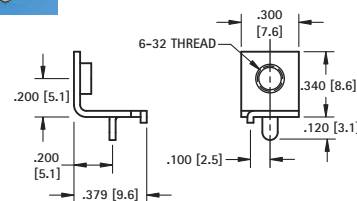
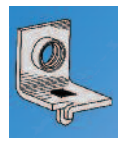
6-32 THREAD



CAT. NO. 614

MATERIAL:
.032 (.81) Brass, Tin Plate

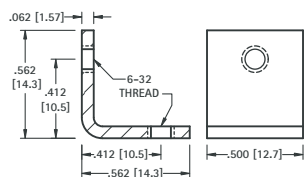
6-32 THREAD



CAT. NO. 632

MATERIAL:
.032 (.81) Brass, Tin Plate

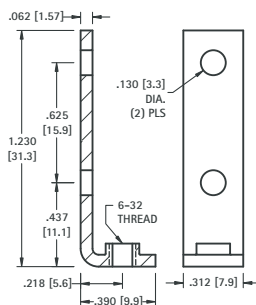
6-32 THREAD



CAT. NO. 4334

MATERIAL:
.062 (1.57) Steel, Nickel Plate

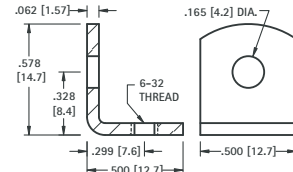
6-32 THREAD



CAT. NO. 708

MATERIAL:
.062 (1.57) Steel, Nickel Plate

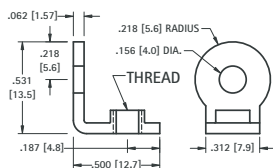
6-32 THREAD



CAT. NO. 617

MATERIAL:
.062 (1.57) Steel, Tin Plate

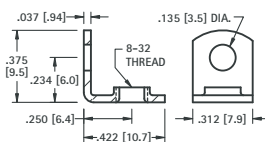
6-32 OR 8-32 THREAD



CAT. NO.	THREAD
4332	6-32
4333	8-32

MATERIAL:
.062 (1.57) Brass, Nickel Plate

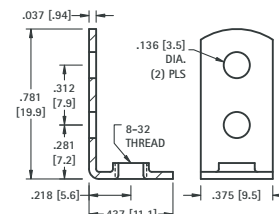
8-32 THREAD



CAT. NO. 611

MATERIAL:
.037 (.94) Brass, Tin Plate

8-32 THREAD





CAT. NO. 631

MATERIAL:
.037 (.94) Steel, Tin Plate

Looking for pricing, stock, or lifecycle information?

Click below to explore more details on WIN SOURCE:

-  [View 631 on WIN SOURCE](#)
-  [Keystone Electronics Information](#)

Optimize Your Supply Chain with WIN SOURCE Solutions

-  Global Sourcing Solution
-  Obsolete Management
-  Cost Control Management
-  Shortage Management
-  Alternative Solution
-  Excess Inventory Management