



THE DATASHEET OF
560L





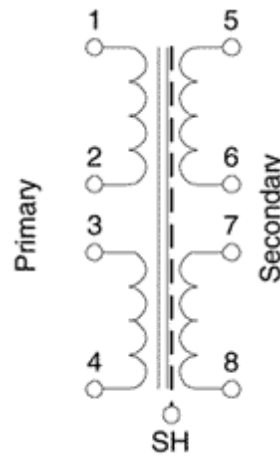
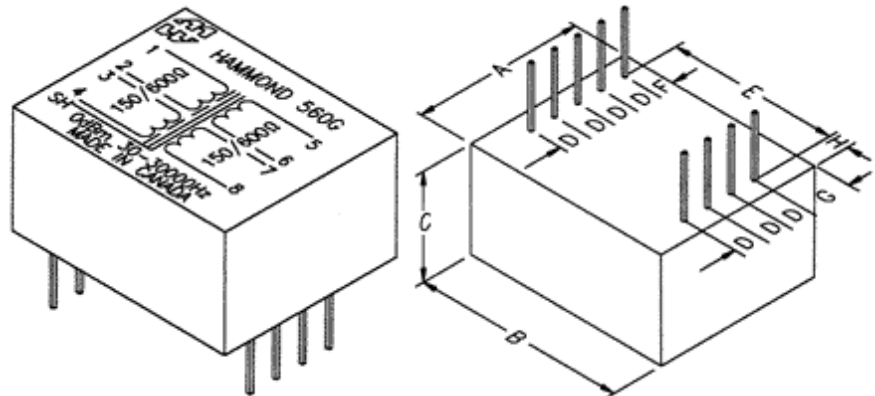
Quality Products. Service Excellence.

Audio Broadcast Quality 560 Series

Features



- Rugged black epoxy potted case with 9 pin connections (.025" square by 0.5" long).
- Frequency response minimum @ 0 dbm +/- 1 db max. (+/- 0.5 db is typical) of 30 Hz. to 30 KHz., except 560Q which is 30 Hz. to 15 KHz. - see data sheets below for more detail.
- Higher signal levels possible with reduced low frequency performance.
- Insertion loss of 1 db maximum
- Electrostatic shield between primary & secondary connected to core and brought out to pin "SH".
- Humbucking construction
- Balanced split windings on pri. & sec. for circuit versatility.
- Primaries and secondaries can be reversed for impedance matching.
- Overall dimensions 1.64" (41.7 mm) x 1.33" (33.8 mm) x 0.85" (21.6 mm) high max.
- Shipping weight 4 oz. (0.1 kg)



Part No.	Application	Nominal Impedance (Ohms)		Overall Dimensions							
		Primary	Secondary	A	B	C	D	E	F	G	H
560C	Emitter or mic to Line	12/48	150/600	1.33	1.64	0.85	0.20	1.30	0.14	0.36	0.17
560E	Emitter or mic to Line	50/200	150/600	1.33	1.64	0.85	0.20	1.30	0.14	0.36	0.17
560G	Isolating or Hybrid	150/600	150/600	1.33	1.64	0.85	0.20	1.30	0.14	0.36	0.17
560J	Collector to Line or Line to Base	150/600	1200/4800	1.33	1.64	0.85	0.20	1.30	0.14	0.36	0.17



Part No.	Application	Nominal Impedance (Ohms)		Overall Dimensions							
		Primary	Secondary	A	B	C	D	E	F	G	H
560L	Collector to Line or Matching	150/600	5K/20K	1.33	1.64	0.85	0.20	1.30	0.14	0.36	0.17
560N	Collector to Line	150/600	10K/40K	1.33	1.64	0.85	0.20	1.30	0.14	0.36	0.17
560Q	Matching or Bridging	10k/40k	10K/40K	1.33	1.64	0.85	0.20	1.30	0.14	0.36	0.17

Tags: **audio transformer, broadcast, humbucking, shield, split windings, impedance matching, pin connection** *Data subject to change without notice*

© 2024. Hammond Manufacturing Ltd. All rights reserved.

Looking for pricing, stock, or lifecycle information?

Click below to explore more details on WIN SOURCE:

-  [View 560L on WIN SOURCE](#)
-  [Hammond Manufacturing Information](#)

Optimize Your Supply Chain with WIN SOURCE Solutions

-  Global Sourcing Solution
-  Obsolete Management
-  Cost Control Management
-  Shortage Management
-  Alternative Solution
-  Excess Inventory Management