

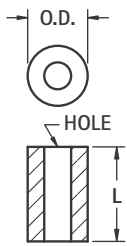


THE DATASHEET OF
418





ROUND CLEAR HOLE SPACERS



BRASS



ALUMINUM



NYLON



MATERIAL: Brass: ASTM-B16, Nickel Plate (QQ-N-290) Aluminum: ASTM B211, Clear Iridite (MIL-C-5541) Nylon: Nylon 6/6, UL Rated 94V-2

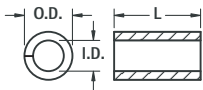
| CLEAR HOLE | O.D. | L LENGTH | BRASS CAT. NO. | ALUMINUM CAT. NO. | NYLON CAT. NO. | CLEAR HOLE | O.D. | L LENGTH | BRASS CAT. NO. | ALUMINUM CAT. NO. | NYLON CAT. NO. |
|----------------------|------------|--------------|----------------|-------------------|----------------|-----------------------|------------|--------------|----------------|-------------------|----------------|
| .120 (3.0) For #4 | .250 (6.4) | .125 (3.2) | 1909 | 2036 | 875 | .171 (4.3) For #8 | .250 (6.4) | .125 (3.2) | 1942 | 4258 | 891 |
| | | .250 (6.4) | 1454A | 3457 | 876 | | | .250 (6.4) | 1480 | 3471 | 892 |
| | | .375 (9.5) | 1454B | 3458 | 877 | | | .375 (9.5) | 1481 | 3472 | 893 |
| | | .500 (12.7) | 1454C | 3459 | 878 | | | .500 (12.7) | 1482 | 3473 | 894 |
| | | .625 (15.9) | 1919 | 2314 | 879 | | | .625 (15.9) | 2032 | 4259 | 895 |
| | | .750 (19.1) | 1454D | 3460 | 880 | | | .750 (19.1) | 1483 | 3474 | 896 |
| | | .875 (22.2) | 1920 | 3402 | 881 | | | .875 (22.2) | 2033 | 4260 | 897 |
| | | 1.000 (25.4) | 1454E | 3461 | 882 | | | 1.000 (25.4) | 1484 | 3475 | 898 |
| | | 1.500 (38.1) | 1924 | 3462 | 779 | | | 1.500 (38.1) | 2034 | 3476 | 799 |
| | | 2.000 (50.8) | 1925 | 3463 | — | | | 2.000 (50.8) | 2035 | 3477 | — |
| .140 (3.5) For #6 | .250 (6.4) | .125 (3.2) | 1934 | 3403 | 883 | .196 (5.0) For #10 | .312 (7.9) | — | — | — | — |
| | | .250 (6.4) | 1457A | 3464 | 884 | | | .250 (6.4) | 1662 | 4261 | 790 |
| | | .375 (9.5) | 1457B | 3465 | 885 | | | .375 (9.5) | 1663 | 4262 | 791 |
| | | .500 (12.7) | 1457C | 3466 | 886 | | | .500 (12.7) | 1664 | 4263 | 792 |
| | | .625 (15.9) | 1935 | 3429 | 887 | | | .625 (15.9) | 1665 | 4264 | 793 |
| | | .750 (19.1) | 1457D | 3467 | 888 | | | .750 (19.1) | 1666 | 4265 | 794 |
| | | .875 (22.2) | 1936 | 3438 | 889 | | | .875 (22.2) | 1667 | 4266 | 795 |
| | | 1.000 (25.4) | 1457E | 3468 | 890 | | | 1.000 (25.4) | 1668 | 4267 | 796 |
| | | 1.500 (38.1) | 1937 | 3469 | 789 | | | 1.500 (38.1) | 1669 | 4268 | 797 |
| | | 2.000 (50.8) | 1938 | 3470 | — | | | 2.000 (50.8) | 1672 | 4269 | — |

* Visit our Parts Builder System online (www.keyelco.com) to see all of our spacer offerings.

ALUMINUM ECONOMY SPACERS



- Made of flat strip aluminum and rolled on precision equipment
- Assures maximum bearing surface, square ends
- Tight Joint on Outside Diameter



MATERIAL: Aluminum

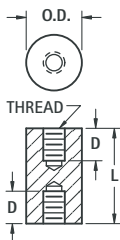
| SPACER FOR | I.D. | O.D. REF. |
|------------|------------|------------|
| # 4 | .120 (3.0) | .167 (4.3) |
| # 6 | .148 (3.8) | .193 (4.9) |
| # 8 | .176 (4.5) | .232 (5.9) |

| L LENGTH | SCREW CLEARANCE | | |
|-------------|-----------------|----------|----------|
| | # 4 | # 6 | # 8 |
| CAT. NO. | CAT. NO. | CAT. NO. | CAT. NO. |
| .187 (4.7) | 397 | — | — |
| .250 (6.4) | 398 | 405 | 412 |
| .312 (7.9) | 399 | 406 | 413 |
| .375 (9.5) | 400 | 407 | 414 |
| .437 (11.1) | 401 | 408 | 415 |
| .500 (12.7) | 402 | 409 | 416 |
| .625 (15.9) | 403 | 410 | 417 |

| L LENGTH | SCREW CLEARANCE | | |
|--------------|-----------------|----------|----------|
| | # 4 | # 6 | # 8 |
| CAT. NO. | CAT. NO. | CAT. NO. | CAT. NO. |
| .750 (19.1) | 418 | 425 | 432 |
| .875 (22.2) | 419 | 426 | 433 |
| 1.000 (25.4) | 420 | 427 | 434 |
| 1.250 (31.8) | 421 | 428 | 435 |
| 1.500 (38.1) | 422 | 429 | 436 |
| 1.750 (44.5) | — | 430 | 437 |
| 2.000 (50.8) | — | — | 438 |

CERAMIC STANDOFFS

- Ideal for very high temperature conditions
- Commercial and military types available
- Military types meet MIL-1-010, NL # clearly marked
- Exceptional strength in compression and tension
- Withstands very high voltage without flashover
- Special sizes available upon request



MATERIAL: Grade L5 Ceramic


| COMMERCIAL | | | | | |
|------------|---------------|-------------|----------|-------------|--|
| CAT. NO. | L LENGTH | O.D. | T THREAD | D DEPTH | |
| 7710 | .250 (6.4) | .250 (6.4) | 6-32 | THRU | |
| 7711 | .500 (12.7) | .250 (6.4) | 6-32 | .156 (4.0) | |
| 7712 | .375 (9.5) | .375 (9.5) | 6-32 | .156 (4.0) | |
| 7713 | .500 (12.7) | .375 (9.5) | 6-32 | .156 (4.0) | |
| 7714 | .500 (12.7) | .500 (12.7) | 6-32 | .140 (3.6) | |
| 7715 | .750 (19.1) | .500 (12.7) | 6-32 | .250 (6.4) | |
| 7716 | 1.000 (25.4) | .500 (12.7) | 6-32 | .375 (9.5) | |
| 7717 | 1.500 (38.1) | .500 (12.7) | 6-32 | .562 (14.3) | |
| 7718 | 2.500 (63.5) | .500 (12.7) | 6-32 | .500 (12.7) | |
| 7719 | 2.500 (63.5) | .750 (19.1) | 1/4 - 20 | .750 (19.1) | |
| 7720 | 4.000 (101.6) | .750 (19.1) | 1/4 - 20 | .750 (19.1) | |

| MILITARY | | | | | |
|----------|--------------|--------------|----------|-------------|--------------|
| CAT. NO. | L LENGTH | O.D. | T THREAD | D DEPTH | NL # |
| 7661 | .500 (12.7) | .375 (9.5) | 6-32 | .156 (4.0) | NL523W01-004 |
| 7662 | .625 (15.9) | .375 (9.5) | 6-32 | .250 (6.4) | NL523W01-005 |
| 7663 | .625 (15.9) | .500 (12.7) | 8-32 | .187 (4.7) | NL523W02-005 |
| 7664 | .750 (19.1) | .375 (9.5) | 6-32 | .250 (6.4) | NL523W01-006 |
| 7665 | .750 (19.1) | .500 (12.7) | 8-32 | .250 (6.4) | NL523W02-006 |
| 7666 | 1.000 (25.4) | .375 (9.5) | 6-32 | .375 (9.5) | NL523W01-008 |
| 7667 | 1.000 (25.4) | .500 (12.7) | 8-32 | .375 (9.5) | NL523W02-008 |
| 7668 | 1.000 (25.4) | .750 (19.1) | 10-32 | .375 (9.5) | NL523W03-008 |
| 7669 | 1.250 (31.8) | .375 (9.5) | 6-32 | .375 (9.5) | NL523W01-010 |
| 7670 | 1.250 (31.8) | .500 (12.7) | 8-32 | .375 (9.5) | NL523W02-010 |
| 7671 | 1.250 (31.8) | 1.000 (25.4) | 1/4 - 20 | .437 (11.1) | NL523W04-010 |
| 7672 | 1.500 (38.1) | .375 (9.5) | 6-32 | .375 (9.5) | NL523W01-012 |
| 7673 | 1.500 (38.1) | .500 (12.7) | 8-32 | .375 (9.5) | NL523W02-012 |
| 7674 | 1.500 (38.1) | .750 (19.1) | 10-32 | .375 (9.5) | NL523W03-012 |
| 7675 | 1.500 (38.1) | 1.000 (25.4) | 1/4 - 20 | .500 (12.7) | NL523W04-012 |
| 7676 | 2.000 (50.8) | .375 (9.5) | 6-32 | .375 (9.5) | NL523W01-016 |
| 7677 | 2.000 (50.8) | .500 (12.7) | 8-32 | .375 (9.5) | NL523W02-016 |
| 7678 | 2.000 (50.8) | .750 (19.1) | 10-32 | .375 (9.5) | NL523W03-016 |









Looking for pricing, stock, or lifecycle information?

Click below to explore more details on WIN SOURCE:

-  [View 418](#) on WIN SOURCE
-  [Keystone Electronics](#) Information

Optimize Your Supply Chain with WIN SOURCE Solutions

-  Global Sourcing Solution
-  Obsolete Management
-  Cost Control Management
-  Shortage Management
-  Alternative Solution
-  Excess Inventory Management