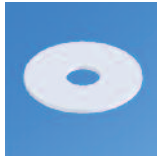
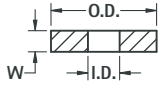
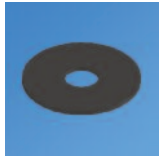




**THE DATASHEET OF**  
**3145**



## FLAT WASHERS - NYLON & FIBRE



**MATERIAL:**

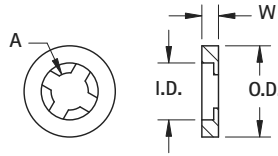
Fibre: Commercial Grade per ASTM D710 Nylon: Grade 6/6 per ASTM D4066

MATERIAL	I.D.	O.D.	W THICKNESS		
			.032 (.81)	.047 (1.19)	.062 (1.57)
			CAT. NO.	CAT. NO.	CAT. NO.
FIBRE	.098 (2.49) #2	.187 (4.8)	3111	3148	3366
		.250 (6.4)	3112	3149	3367
		.312 (7.9)	3113	3150	3194
NYLON	.098 (2.49) #2	.187 (4.8)	3114	3151	3356
		.250 (6.4)	3347*	3152	3357*
		.312 (7.9)	3115	3153	3195
FIBRE	.120 (3.05) #4	.250 (6.4)	3116	3154	3368
		.312 (7.9)	348	3155	3196
		.375 (9.5)	3117	3156	3197
NYLON	.120 (3.05) #4	.250 (6.4)	3348	345	3358
		.312 (7.9)	3359	3157	3198
		.375 (9.5)	3118	3158	3200
FIBRE	.140 (3.56) #6	.250 (6.4)	3119	3159	3369
		.312 (7.9)	3120	3160	3370
		.375 (9.5)	3121	3161	3201
NYLON	.140 (3.56) #6	.250 (6.4)	3122	3162	3360
		.312 (7.9)	3349	346	3361
		.375 (9.5)	3123	3163	3202
FIBRE	.171 (4.34) #8	.312 (7.9)	3124	3164	3203
		.375 (9.5)	3125	3165	3372
		.437 (11.1)	3126	3166	3204
NYLON	.171 (4.34) #8	.312 (7.9)	3127	3167	3205
		.375 (9.5)	3350	3168	3363
		.437 (11.1)	3128	3169	3206
FIBRE	.196 (4.98) #10	.312 (7.9)	349	3170	3207
		.375 (9.5)	3129	3171	3208
		.437 (11.1)	3130	3172	3209
NYLON	.196 (4.98) #10	.500 (12.7)	3131	3173	3210
		.312 (7.9)	3364	3174	3211
		.375 (9.5)	3352	3175	3212
FIBRE	.260 (6.60) 1/4"	.437 (11.1)	3132	3176	3213
		.500 (12.7)	3133	3177	3214
		.437 (11.1)	3134	3178	3215
NYLON	.260 (6.60) 1/4"	.500 (12.7)	3135	3179	3373
		.625 (15.9)	3136	3180	3216
		.750 (19.1)	3137	3181	3217
FIBRE	.385 (9.65) 3/8"	.437 (11.1)	3138	3182	3218
		.500 (12.7)	3353	3183	3365
		.625 (15.9)	3139	3184	3219
NYLON	.385 (9.65) 3/8"	.750 (19.1)	3140	3185	3220
		.500 (12.7)	3141	3186	3221
		.625 (15.9)	3142	3187	3222
FIBRE	.750 (19.1) 1.000 (25.4)	.750 (19.1)	3143	3188	3223
		1.000 (25.4)	3144	3189	3224
		.500 (12.7)	3145	3190	3225
NYLON	.385 (9.65) 3/8"	.625 (15.9)	3354	3191	3226
		.750 (19.1)	3146	3192	3227
		1.000 (25.4)	3147	3193	3228

\*.090 (2.3) I.D.

## NYLON RETAINING WASHERS

Retaining Washers are similar to our standard washers, but with a specially configured ID designed to grip the screw shank. The washer remains attached to the screw, for quick, easy assembly.

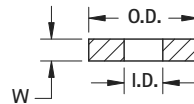
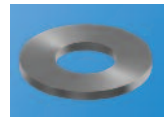


**MATERIAL:**

Nylon, 6/6 UL Rated 94V-0

CAT. NO.	CAT. NO.	SCREW SIZE	A	I.D.	O.D.
2244	2284	#2 (M2)	.115 (2.9)	.078 (1.9)	.203 (5.2)
2245	2285	#4	.156 (3.9)	.102 (2.6)	.256 (6.7)
2246	2286	#6 (M3.5)	.198 (5.0)	.128 (3.3)	.328 (8.3)
2247	2287	#8 (M4)	.235 (5.9)	.152 (3.8)	.390 (9.9)
2248	—	#10	.227 (7.0)	.135 (3.4)	.390 (9.9)
2249	—			.453 (11.5)	
—	2290	#1/4 (M6)	.375 (9.5)	.177 (4.5)	.500 (12.7)
—	2291			.630 (16.0)	
2252	2292	#3/8	.564 (14.3)	.234 (5.9)	.593 (15.1)
2253	2293			.350 (8.9)	.890 (22.6)

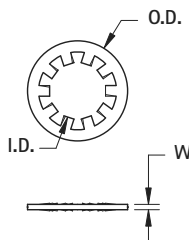
## STEEL FLAT WASHERS



**MATERIAL:** Steel, Zinc Plate

CAT. NO.	I.D.	O.D.	W	SCREW SIZE
4692	.128 (3.3)	.281 (7.1)	.025 (.63)	#4 (M3)
7235-1	.120 (3.1)	.220 (5.6)	.032 (.81)	
4699	.147 (3.7)	.373 (9.5)	.031 (.80)	#6 (M3.5)
4703	.200 (5.1)	.436 (11.1)	.033 (.84)	#10 (M4)
1719-1	.391 (9.9)	1.500 (38.1)	.094 (2.4)	3/8"

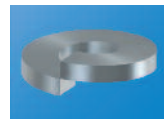
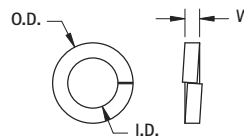
## INTERNAL TOOTH WASHERS



**MATERIAL:** Phospor Bronze - Nickel Plate

CAT. NO.	I.D.	O.D.	W	SCREW SIZE
11362-5	.226 (5.7)	.402 (10.2)	.020 (.51)	#12 (M5)
4691	.261 (6.6)	.469 (11.9)	.025 (.63)	1/4" (M6)

## STEEL LOCK WASHERS




**MATERIAL:** Steel, Zinc Plate

CAT. NO.	I.D.	O.D.	W	SCREW SIZE
4693	.117 (3.0)	.205 (5.2)	.031 (.78)	#4 (M3)
7235-2	.117 (3.0)	.197 (5.0)	.025 (.63)	
4700	.144 (3.7)	.250 (6.4)	.033 (.84)	#6 (M3.5)
1477	.195 (5.0)	.320 (8.1)	.047 (1.2)	#10 (M4)
1486	.256 (6.5)	.479 (12.2)	.074 (1.9)	1/4" (M6)
1485	.321 (8.2)	.586 (14.8)	.078 (2.0)	5/16" (M8)

WASHERS

## Looking for pricing, stock, or lifecycle information?

Click below to explore more details on WIN SOURCE:

-  [View 3145 on WIN SOURCE](#)
-  [Keystone Electronics Information](#)

## Optimize Your Supply Chain with WIN SOURCE Solutions

-  Global Sourcing Solution
-  Obsolete Management
-  Cost Control Management
-  Shortage Management
-  Alternative Solution
-  Excess Inventory Management