



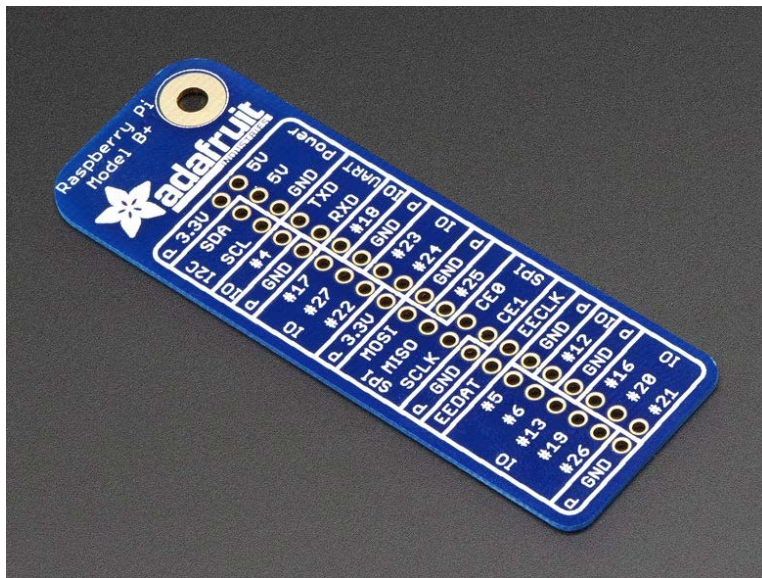
**THE DATASHEET OF**  
**2263**





# Adafruit GPIO Reference Card for Raspberry Pi Model B+/Pi 2/Pi 3

PRODUCT ID: 2263



## . Description

This board makes connecting wires to the Raspberry Pi GPIO incredibly easy. It's a reference board that makes it really easy to see if you're connecting your wires correctly. We liked the Pi GPIO Reference Board from Low Voltage Labs so much that we worked with them to license their design! We made some changes to the Low Voltage version - including grouping the pins into categories like I2C, IO, UART, SPI, and power.

It's only 0.8mm thick, idiot proof (you can't put it on backwards...), and makes a great keychain for the Pi enthusiast. Simply slide it onto the 2x20 GPIO header, then you can plug in premium jumper wires with female sockets on top as shown.

This version works with the Raspberry Pi Model B+ / Pi 2 / Pi 3. **It does not work with the Raspberry Pi Model B but we do have a B version as well!**

## . Technical Details

- Dimensions: 66mm x 23mm x 0.8mm / 2.6" x 0.9" x 0.03"
- Weight: 2.4g



## Looking for pricing, stock, or lifecycle information?

Click below to explore more details on WIN SOURCE:

- ⊖ [View 2263 on WIN SOURCE](#)
- ⊖ [Adafruit Industries LLC Information](#)

## Optimize Your Supply Chain with WIN SOURCE Solutions

- ✓ Global Sourcing Solution
- ✓ Obsolete Management
- ✓ Cost Control Management
- ✓ Shortage Management
- ✓ Alternative Solution
- ✓ Excess Inventory Management