



THE DATASHEET OF
2134034-1



4

3

2

1

THIS DRAWING IS UNPUBLISHED.

RELEASED FOR PUBLICATION

20

© COPYRIGHT 20 BY TYCO ELECTRONICS CORPORATION. ALL RIGHTS RESERVED.

本図面に記載された内容はタイコ エレクトロニクス アンプ(株)の所有する情報を開示してあります。
無断で複写・配布する事を禁じます。 特許出願中

REVISIONS

変更

P	LTR	DESCRIPTION	DATE	DWN	APVD
	B	REVISED	14OCT2015	M.T	K.K

AS SHOWN : - 1

Dimensions:
 Total length: 16.7 ± 0.1
 Contact pitch: 1.1 ± 0.05
 Pitch: 1.1 ± 0.05
 Contact width: $1.1 \times 5 = 5.5 \pm 0.05$
 Contact offset: 3.175 ± 0.1
 Overall height: 20.3 ± 0.1
 Contact height: 1.0

CONTACT LOCATIONS: C7, C3, C6, C2, C5, C1

Ø2 PICK UP AREA

 1.33 ± 0.07

DETAIL A

SECT B-B

CONTACT LOCATION

Dimensions:
 Contact height: 0.15
 Contact width: 0.89 ± 0.04
 CARD SPACE

CONTACT LOCATIONS: C7, C3, C6, C2, C5, C1

STAND OFF

DETAIL A
SCALE 8:1

△ MATERIAL
 ELEMENT : COPPER ALLOY
 TRAY, GUIDE : STAINLESS
 HOUSING : HIGH TEMPERATURE THERMO PLASTIC
 UL94V-0 BLACK

△ FINISH
 ELEMENT : CONTACT POINT; 0.4umMIN. Au
 SOLDERING TINE SURFACE Au FLASH PLATE,
 ALL OVER NICKEL PLATE 0.13umMIN.
 ADD SEALING

3 COPLANARITY; 0.08MAX.

CAUTION; THERE IS A POSSIBILITY THAT NORMAL FORCE CHANGES ACCORDING TO THE PCB MATERIAL AND THICKNESS, ETC. PLEASE HANDLE IT WITH CARE.

当コネクタを実装する基板材質・厚さ等によって接圧変動する可能性がありますので、取り扱いに充分な注意をお願い致します。

THIS DRAWING IS A CONTROLLED DOCUMENT.

DIMENSIONS:
単位: mm

MATERIAL
材料 SEE NOTE △TOLERANCES UNLESS OTHERWISE SPECIFIED:
一般公差 ± 0.15

0-PLC	\pm
1-PLC	\pm
2-PLC	\pm
3-PLC	\pm
4-PLC	\pm
ANGLES	$\pm 3^\circ$

FINISH
仕上 SEE NOTE △

DWN 17JUN2010

C.OHASHI

CHK 17JUN2010

Y.NAKAZAWA

APVD 17JUN2010

Y.NAKAZAWA

PRODUCT SPEC
製品規格

108-78668

APPLICATION SPEC
取付適用規格

WEIGHT 0.37g

Customer Drawing

NAME

名称

TS14-RVS

DOUBLE CONTACT

BODY ASSY

SIZE

A3

CAGE CODE

00779

DRAWING NO

C-2134034

RESTRICTED TO

REV B

TE Connectivity

TS14-RVS
DOUBLE CONTACT
BODY ASSYSCALE
尺度 5:1

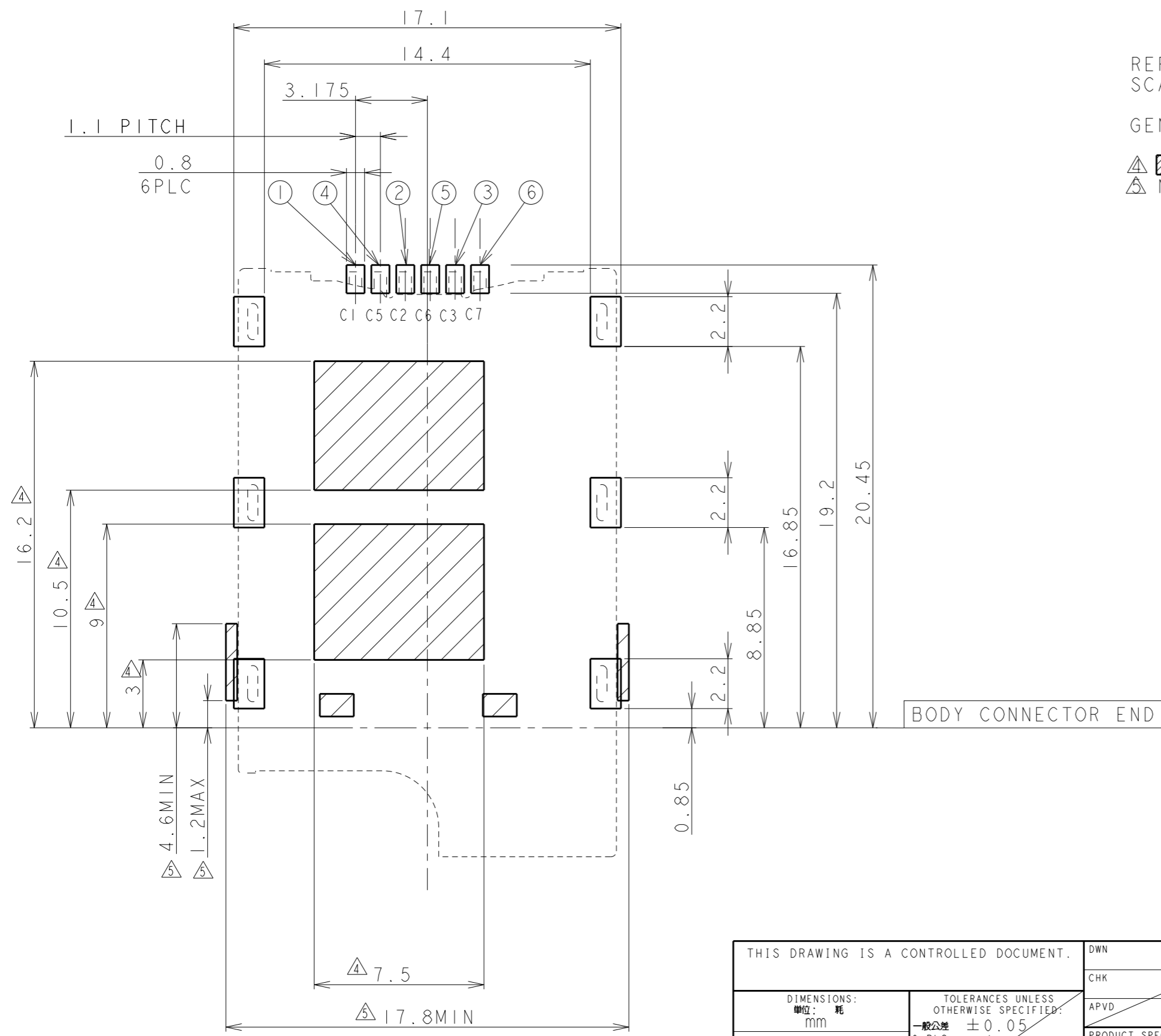
SHEET 1 OF 4

REV B

1470-19 (3/13)

REVISIONS

P	LTR	DESCRIPTION	DATE	DWN	APVD



REFERENCE PCB LAYOUT
SCALE 5:1

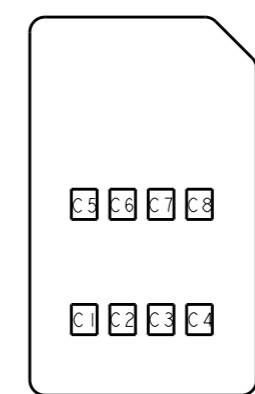
GENERAL TOLERANCE; ±0.05

△ HATCHING AREA; FORBIDDEN AREA OF PATTERN
 △ NO PARTS LOCATED IN THIS AREA

CONNECTOR PIN ASSIGNMENT

NO.	PIN NAME	DESCRIPTION
①	C1	Vcc OF SIM
②	C2	RST OF SIM
③	C3	CLK OF SIM
④	C5	GND OF SIM
⑤	C6	Vpp OF SIM
⑥	C7	I/O OF SIM

SIM CARD PIN ASSIGNMENT



PIN NO.	NAME
C1	Vcc
C2	RST
C3	CLK
C4	RESERVED
C5	GND
C6	Vpp
C7	I/O
C8	RESERVED

SCALE 2:1

SIM CARD PAD LAYOUT

BODY CONNECTOR END

本図面に記載された内容はタイコ エレクトロニクス アンプ(株)の所有する情報を開示しております。
 無断で複写・配布する事を禁じます。 特許出願中

THIS DRAWING IS A CONTROLLED DOCUMENT.		DWN	TE Connectivity	
DIMENSIONS: 単位: mm		CHK		
TOLERANCES UNLESS OTHERWISE SPECIFIED: 一般公差 ±0.05		APVD	NAME 名称	
0 PLC ±		PRODUCT SPEC 製品規格	TS14-RVS	
1 PLC ±		APPLICATION SPEC 取付適用規格	DOUBLE CONTACT	
2 PLC ±		WEIGHT	BODY ASSY	
3 PLC ±		Customer Drawing	SIZE A3	RESTRICTED TO
4 PLC ±		SCALE 尺度 5:1	CAGE CODE 00779	DRAWING NO. 2134034
ANGLES ±		SHEET 2 OF 4	REV B	
FINISH 仕上				

4

3

2

1

THIS DRAWING IS UNPUBLISHED. RELEASED FOR PUBLICATION 20

© COPYRIGHT 20 BY TYCO ELECTRONICS CORPORATION. ALL RIGHTS RESERVED.

REVISIONS				
P	LTR	DESCRIPTION	DATE	APVD

リール引き出し方向 →

Dimensions: 15.25 REF, $1.75^{+0.1}$, $\phi 1.5 \pm 0.1$, 4 ± 0.1 , 2 ± 0.1 , 32 ± 0.3 , 24 PITCH

FRANGE CORE DIA $\phi 150 \pm 1$

REEL DIA. $\phi 330 \pm 1$

32.4⁺²

38.4 MAX REEL WIDTH

WEEDING THE COVER TAPE

300 REF カバーテープフリータ部

3

剥離角度 $165^{\circ} \sim 180^{\circ}$ PEELING ANGLE

剥離強度; $0.1 \sim 0.7N (300mm/min)$ PEELING STRENGTH

2

製品装填部 WITH PRODUCT CHARGE 1000個/1リール 1000EA/1REEL

空部 7~10穴 WITHOUT CHARGE 7~10HOLES

300 REF 空部 WITHOUT CHARGE

AS SHOWN : - 1

THIS DRAWING IS A CONTROLLED DOCUMENT.		DWN	STE TE Connectivity	
DIMENSIONS: $\square\square:\square$ mm		CHK		
TOLERANCES UNLESS OTHERWISE SPECIFIED: $\square\square\square \pm 0.15$		APVD	NAME $\square\square$	
0 PLC \pm		PRODUCT SPEC $\square\square\square$	TS14-RVS DOUBLE CONTACT BODY ASSY	
1 PLC \pm		APPLICATION SPEC $\square\square\square\square$	SIZE	RESTRICTED TO
2 PLC \pm		WEIGHT	A300779	C=2134034
3 PLC \pm		Customer Drawing		
4 PLC \pm		SCALE	SHEET	REV
ANGLES \pm		$\square\square$ NTS	3 OF 4	B
FINISH $\square\square$		1470-19 (3/13)		

THIS DRAWING IS UNPUBLISHED.

RELEASED FOR PUBLICATION

20

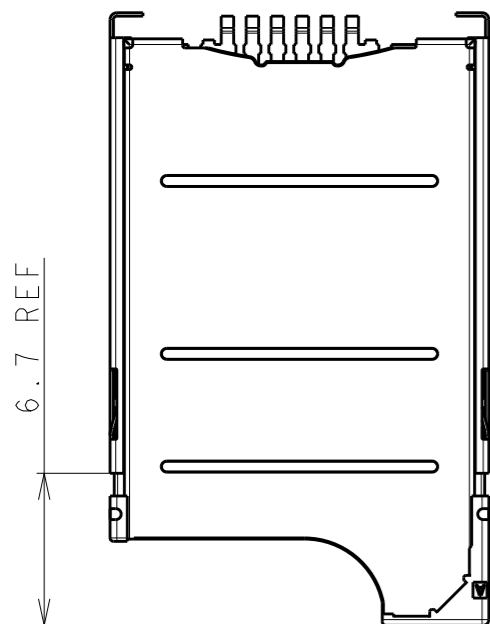
© COPYRIGHT 20 BY TYCO ELECTRONICS CORPORATION. ALL RIGHTS RESERVED.

REVISIONS

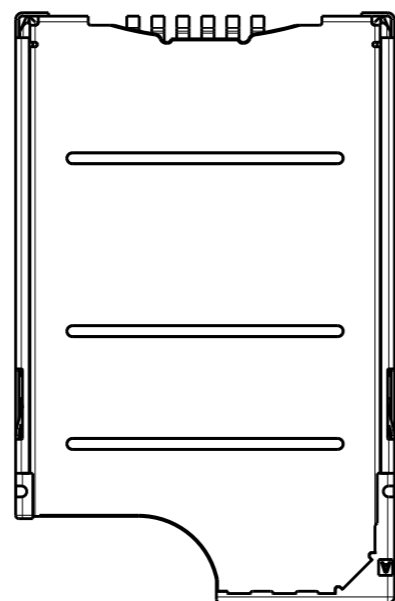
変更

P	LTR	DESCRIPTION	DATE	DWN	APVD

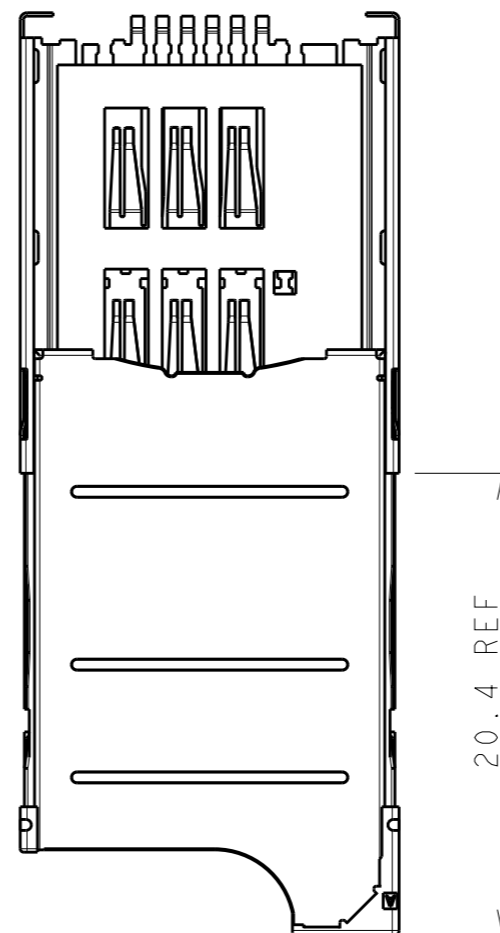
本図面に記載された内容はタイコ エレクトロニクス アンプ(株)の所有する情報を開示しております。
 無断で複写・配布する事を禁じます。 特許出願中



POSITION IN WHICH CONTACT
 DEVIATE FROM SIM PAD
 コンタクトがSIMカードPADを外れる位置

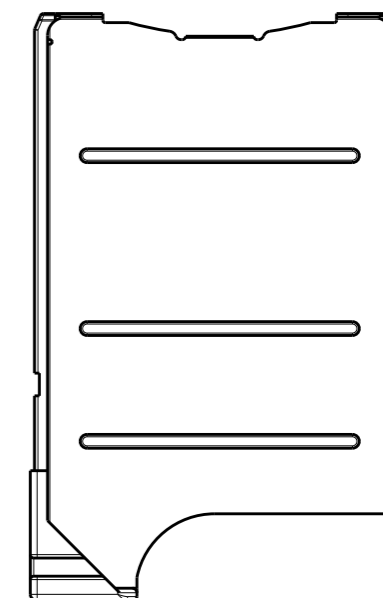


NOMINAL POSITION
 通常使用時



TRAY EJECT POSITION
 TARY引き出し位置

METAL TRAY
 P/N; 2134033-1



PAI CORT AREA
 PAIコート材範囲

THIS DRAWING IS A CONTROLLED DOCUMENT.		DWN	STE TE Connectivity	
DIMENSIONS: 単位: 耗 mm		CHK		
TOLERANCES UNLESS OTHERWISE SPECIFIED: 一般公差 ±0.15		APVD	NAME 名称	
0 PLC ±		PRODUCT SPEC 製品規格	TS14-RVS DOUBLE CONTACT BODY ASSY	
1 PLC ±		APPLICATION SPEC 取付適用規格	SIZE	RESTRICTED TO
2 PLC ±		WEIGHT	A300779	C=2134034
3 PLC ±		Customer Drawing	CAGE CODE	DRAWING NO
4 PLC ±		SCALE 尺度 3:1	番号	REV B
ANGLES ±		SHEET 4 OF 4	番号	REV B
FINISH 仕上		REV B	REV B	

Looking for pricing, stock, or lifecycle information?

Click below to explore more details on WIN SOURCE:

 [View 2134034-1](#) on WIN SOURCE

 [TE Connectivity](#) Information

Optimize Your Supply Chain with WIN SOURCE Solutions

-  Global Sourcing Solution
-  Obsolete Management
-  Cost Control Management
-  Shortage Management
-  Alternative Solution
-  Excess Inventory Management