



**THE DATASHEET OF  
NX4025DA-15.360000MHZ-B7**

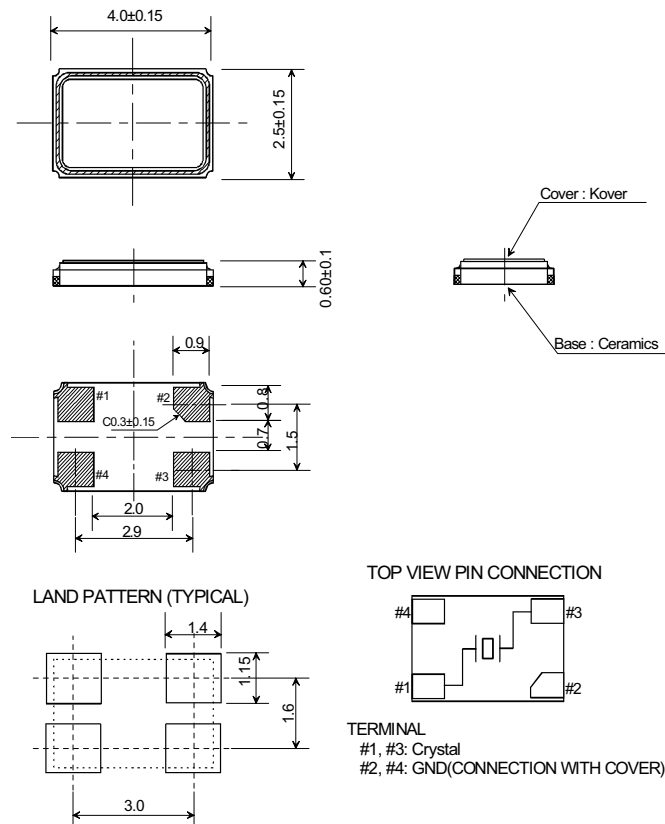


## Specification of Crystal Unit

1	NDK PART NUMBER	NX4025DA-15.360000MHz-B7
2	CHIPSET MAKER	FREESCALE
3	APPLICATION	BLUETOOTH
4	CHIPSET NAME	NA
5	Type	NX4025DA
6	Electrical characteristics	
6.1	Nominal frequency(F0)	15.360MHz
6.2	Overtone order	Fundamental
6.3	Adjustment tolerance	$\pm 10 \times 10^{-6}$ max. (+25 °C)
6.4	Tolerance over the temperature range	$\pm 10 \times 10^{-6}$ max. (-20~+75 °C) The reference temperature shall be +25 °C.
6.5	Equivalent resistance (R1)	60Ω max. (-20~+75 °C)
6.6	Shunt Capacitance (C0)	1.0pF+/-15%
6.7	Motional Capacitance (C1)	3.6fF+/-15%



7	Measurement circuit	
7.2	Frequency measurement	
7.1.1	Measuring instrument	$\pi$ circuit
7.1.2	Load capacitance(CL)	10pF
7.1.3	Level of drive	10μW
7.2	Equivalent resistance measurement	
7.2.1	Measuring instrument	$\pi$ circuit
7.2.2	Load capacitance(CL)	Series
7.2.3	Level of drive	10μW

## 8 Dimension



## Looking for pricing, stock, or lifecycle information?

Click below to explore more details on WIN SOURCE:

-  [View NX4025DA-15.360000MHZ-B7 on WIN SOURCE](#)
-  [NDK Information](#)

## Optimize Your Supply Chain with WIN SOURCE Solutions

-  Global Sourcing Solution
-  Obsolete Management
-  Cost Control Management
-  Shortage Management
-  Alternative Solution
-  Excess Inventory Management