

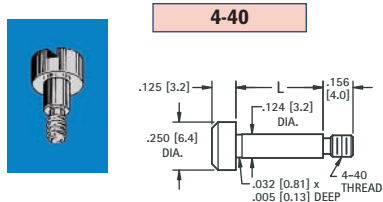


THE DATASHEET OF
1458



PRECISION GROUND SHOULDER SCREWS

Shoulder ground to $+.000/-0.001$ Dia, $+.002 /-.000$ Length. **Material:** Stainless Steel, ASTM A581/A582

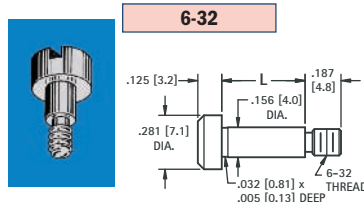


SLOTTED



SOCKET

CAT. NO.	LENGTH	CAT. NO.
2421	.125 (3.2)	2441
2422	.250 (6.4)	2442
2423	.375 (9.5)	2443
2424	.500 (12.7)	2444

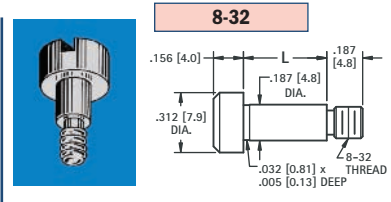


SLOTTED



SOCKET

CAT. NO.	LENGTH	CAT. NO.
2425	.125 (3.2)	2445
2426	.250 (6.4)	2446
2427	.375 (9.5)	2447
2428	.500 (12.7)	2448



SLOTTED

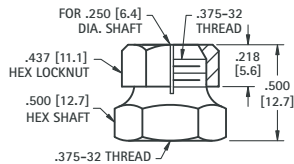
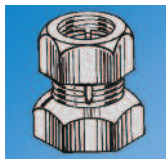


SOCKET

CAT. NO.	LENGTH	CAT. NO.
2431	.125 (3.2)	2451
2432	.250 (6.4)	2452
2433	.375 (9.5)	2453
2434	.500 (12.7)	2454
2435	.625 (15.9)	2455

SHAFT LOCKS

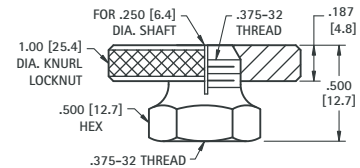
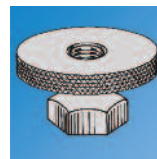
For .250 (6.4) SHAFT



MATERIAL: Brass, Nickel Plate

CAT. NO. 1701

For .250 (6.4) SHAFT



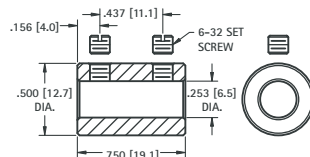
MATERIAL: Brass, Nickel Plate

CAT. NO. 1702

.250 (6.4) SHAFT COUPLING



• Two set screws hold shaft securely

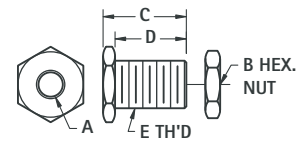


MATERIAL: Brass, Nickel Plate
Set Screws: Steel, Zinc Plate
Supplied unassembled

CAT. NO. 1453

PANEL BEARINGS

STANDARD and MINIATURE



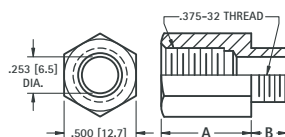
MATERIAL: Brass, Nickel Plate
Supplied unassembled

CAT. NO.	A	B (HEX)	C	D	E THREAD
1705	.253 (6.5)	.437 (11.1)	.500 (12.7)	.437 (11.1)	.375-32 Standard
1706	.128 (3.3)	.343 (8.7)	.437 (11.1)	.375 (9.5)	.250-32 Miniature

VOLUME CONTROL EXTENDERS



For .250 (6.4) volume control shafts having .375-32 threaded bushings.



CAT. NO.	A	B
1464	.625 (15.9)	.250 (6.4)
1465	.625 (15.9)	.375 (9.5)
1466	.687 (17.4)	.500 (12.7)
1467	.750 (19.1)	.250 (6.4)

MATERIAL: Brass, Nickel Plate

PANEL NUTS



For Volume Controls, Switches, Tip Jacks, etc.

CAT. NO.	FOR	THREAD	DIAMETER	THICKNESS
1448	Mounting	1/4-32	.375 Hex	.093 (2.38)
1449	Mini. Control	1/4-32	.312 Hex	.078 (1.98)
1456	Vol. Control	3/8-32	.500 Hex	.093 (2.38)
1458	Switch	15/32-32	.562 Hex	.078 (1.98)
1459	Switch Ring	15/32-32	.625 Knurled	.062 (1.57)
1472	Filter	5/16-32	.375 Hex	.093 (2.38)

MATERIAL: Brass, Nickel Plate

Looking for pricing, stock, or lifecycle information?

Click below to explore more details on WIN SOURCE:

- ⊖ [View 1458 on WIN SOURCE](#)
- ⊖ [Keystone Electronics](#) Information

Optimize Your Supply Chain with WIN SOURCE Solutions

- ✓ Global Sourcing Solution
- ✓ Obsolete Management
- ✓ Cost Control Management
- ✓ Shortage Management
- ✓ Alternative Solution
- ✓ Excess Inventory Management