



**THE DATASHEET OF**  
**1226**



# MINIATURE TUBULAR TERMINALS



.062 (1.57) – .067 (1.70)  
Mounting Holes

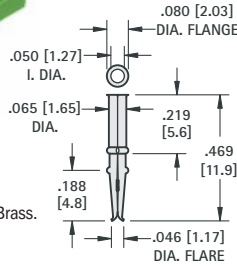
- Quick and Easy to Install • For Production or Prototype
- Postive Locking In-Hole • No Staking Required • Holds .010 (.25) to .050 (1.27) Diameter Wire

These terminals are often used for transistor and Bi-Pin lamp sockets. Terminals snap into place and are firmly held without the need of staking. Wire leads can be inserted from either end.

Terminals 1236 and 1237 have tapered socket spring forming that will hold multiple leads in place. Terminals are pre-tinned for easy soldering.

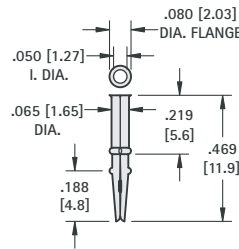
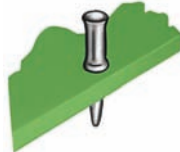
## INSERTION TOOL

For Arbor Press: **CAT. NO. TL-11**; For Hand Tool: **CAT. NO. 1214**



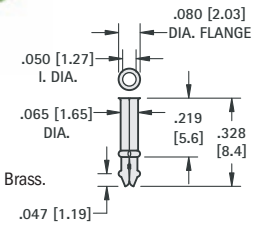
**MATERIAL:**  
.006 (.15) Matte Tin, Brass.  
Pre-Tinned

**CAT. NO. 1236**



**MATERIAL:**  
.006 (.15) Matte Tin, Brass.  
Pre-Tinned

**CAT. NO. 1237**



**MATERIAL:**  
.006 (.15) Matte Tin, Brass.  
Pre-Tinned

**CAT. NO. 1238**

## “FLEA” CLIP



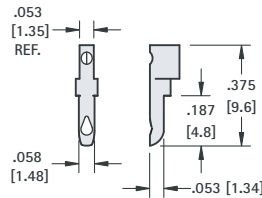
For subminiature applications where conventional terminals are too large or too costly. Ideal for quick repairs of printed circuitry. Simply insert wire through hole and it is held firmly by spring action assuring continued positive contact.

Mtg. Hole .062 (1.57)

Insertion Tool: **CAT. NO. 1322**

**MATERIAL:**  
.008 (.20) Matte Tin, Beryllium  
Copper, Tin Plate

**CAT. NO. 1500**



## “IMP” TERMINAL



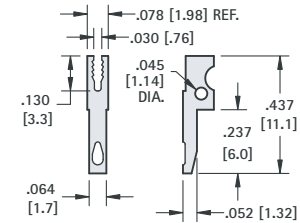
Excellent for point to point or feed thru wiring. Slot is serrated to grip component leads. Multiple connections are made quick and easy.

Mtg. Hole .062 (1.57)

Insertion Tool: **CAT. NO. 1322**

**MATERIAL:**  
.008 (.20) Matte Tin, Beryllium  
Copper, Tin Plate

**CAT. NO. 1499FT**



## CLAMP TERMINAL



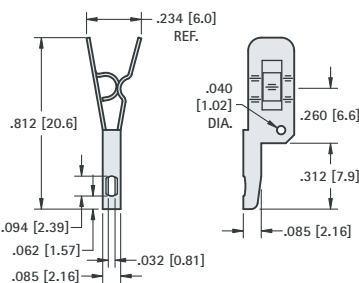
Terminal for production or prototype use. Holds as many as 7 leads without soldering, by spring action.

Mtg. Hole .093 (2.36)

Insertion Tool: **CAT. NO. 1323**

**MATERIAL:**  
.015 (.38) Matte Tin, Spring Steel,  
Tin Plate

**CAT. NO. 1498CP**



## “MICRO” TERMINAL

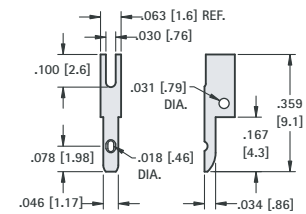


Easily press-fit into a .042 (1.07) diameter hole may be flared for permanent installation. Ideally designed for use in circuitry to support components when space is at a premium.

Insertion Tool: **CAT. NO. 1322**

**MATERIAL:** .008 (.20) Matte Tin,  
Beryllium Copper,  
Tin Plate

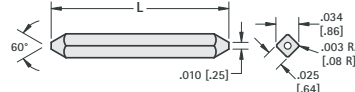
**CAT. NO. 1495**



## .025 SQUARE WIRE WRAP PINS

Completely burr free straight to within .003 (.08) per inch. Conical ends of square-wire with smooth blend-in radius on corners assures ease of insertion with minimum damage to pre-plated PCB holes.

CAT. NO.	L Length	CAT. NO.	L Length
5070	.400 (10.2)	5077	.642 (16.3)
5071	.440 (11.2)	5078	.675 (17.1)
5072	.515 (13.1)	5079	.720 (18.3)
5073	.535 (13.6)	5080	.850 (21.6)
5074	.600 (15.2)	5081	.916 (23.3)
5075	.615 (15.6)	5082	.995 (25.3)
5076	.625 (15.9)	5083	1.13 (28.7)

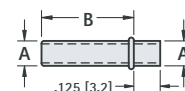


**MATERIAL:** Phosphor Bronze, Tin Plate

## CONTACT PINS (SEAMLESS)

Pins can be staked to .062 (1.57) and .093 (2.36) thick boards.



CAT. NO.	A	B
1223	.093 (2.36)	.293 (7.4)
1224	.093 (2.36)	.357 (9.1)
1226	.093 (2.36)	.437 (11.1)
1200	.125 (3.18)	.379 (9.6)
1210	.125 (3.18)	.566 (14.4)
1230	.156 (3.96)	.379 (9.6)
1231	.156 (3.96)	.566 (14.4)



**MATERIAL:** Brass, Nickel Plate

## Looking for pricing, stock, or lifecycle information?

Click below to explore more details on WIN SOURCE:

-  [View 1226 on WIN SOURCE](#)
-  [Keystone Electronics](#) Information

## Optimize Your Supply Chain with WIN SOURCE Solutions

-  Global Sourcing Solution
-  Obsolete Management
-  Cost Control Management
-  Shortage Management
-  Alternative Solution
-  Excess Inventory Management