



THE DATASHEET OF
1026



THRU-HOLE (THM) & SURFACE MOUNT (SMT) COIN CELL HOLDERS

DESIGN ADVANTAGES...

- Reliable spring tension assures low contact resistance
- Retains battery securely to withstand shock and vibration
- All conductive polystyrene carrier tape meets ANSI/EIA - 481 standard

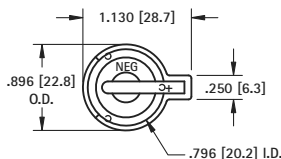
- Base material UL Rated 94V-0. Impervious to most industrial solvents
- Operating temperature range: -60°F to +293°F (-50°C to +145°C)

IDEALLY SUITED FOR...

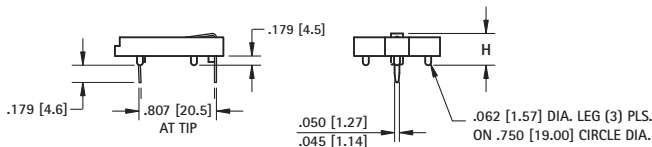
- Computer memory, power transfer and back-up systems
- Video and telecommunications power back-up
- Microprocessors and Microcomputer memory hold (desktop and laptop applications)

- Industrial and commercial security and alarm systems
- Communications power sources
- PC/104 applications

20mm THRU-HOLE MOUNT CON CELL HOLDER



- Advanced air-flow design enhances air circulation around battery
- Reliable spring tension assures low contact resistance
- Unique notched slots assure quick and easy battery insertion and replacement
- Retains battery securely to withstand shock and vibration

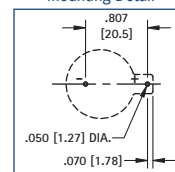


MATERIAL:

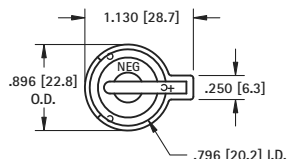
Contacts: .020 (.50) Spring Steel, Tin-Nickel Plate
Base: PBT, UL Rated 94V-0

| CAT. NO. | G | H | L | O.D. | NO. OF CELLS | BATTERY REFERENCE |
|----------|------------|-------------|--------------|--------------|---|--|
| 103 | .100 (2.5) | .335 (8.5) | 1.130 (28.7) | .896 (22.8) | (1) cell (any 20mm) (2) 2012, (2) 2016 | BR2012, CR2012, CR2016, CL2016, DL2020, CL2025, BR2025, CR2032, CL2032 |
| 106 | .100 (2.5) | .335 (8.5) | 1.219 (31.0) | 1.093 (27.8) | (1) cell (any 20mm) (2) 2012, (2) 2016 | BR2012, CR2012, CR2016, CL2016, DL2020, CL2025, BR2025, CR2032, CL2032 |
| 1026 | .100 (2.5) | .452 (11.5) | 1.219 (31.0) | 1.093 (27.8) | (2) 2020, (2) 2025, (2) 2032 | DL2020, CR2020, CL2025, BR2025, CR2032, CL2032 |

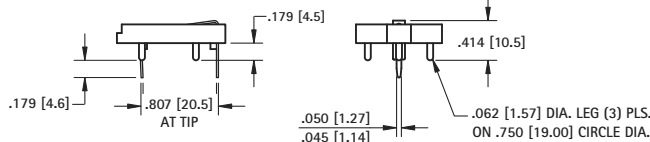
Mounting Detail



20mm RAISED MOUNT COIN CELL HOLDER



- Designed to maximize PC Board Capacity
- Unique raised mounting design allows components to be placed underneath the holder
- Ideal when board space is more important than board height; such as PC/104 applications

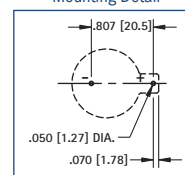


MATERIAL:

Contacts: .020 (.50) Spring Steel, Tin-Nickel Plate
Base: PBT, UL Rated 94V-0

| CAT. NO. | BATTERY REFERENCE | NO. OF CELLS |
|----------|--|---|
| 101 | BR2012, CR2016, CL2020, CR2025, CR2032 | (1) cell (any 20mm) (2) 2012, (2) 2016 |

Mounting Detail

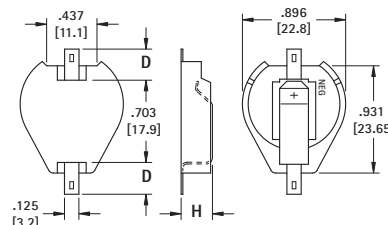


20mm SURFACE MOUNT COIN CELL HOLDER



- Polarity clearly marked (+)
- Compatible with vacuum and mechanical pick & place assembly systems
- SMT solder tail with "Flow-Hole" design for increased joint strength
- Viewable solder tails assures reliable joint inspection
- Safe for all soldering & reflow operations

AVAILABLE ON TAPE AND REEL



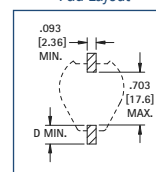
MATERIAL:

Contacts: .015 (.38) Steel
Base: High Temperature, Nylon 46, UL Rated 94V-0

| Tin-Nickel Plate | Gold Plate (Flash) | | | D | H | | | BATTERY REFERENCE |
|------------------------------|------------------------------|------------------------------|------------------------------|------------|------------|---|--|--|
| CAT. NO. ON TAPE BULK & REEL | CAT. NO. ON TAPE BULK & REEL | CAT. NO. ON TAPE BULK & REEL | CAT. NO. ON TAPE BULK & REEL | PAD SIZE | HIEGHT | NO. OF CELLS | | |
| 1061 | 1061TR | 1081 | 1081TR | .156 (4.0) | .290 (7.4) | (1) Cell (any 20mm) (2) 2012, (2) 2016 | | CR2012, CL2016, BR2020, DL2032, CR2032 |
| 1063 | 1063TR | 1093 | 1093TR | .278 (7.1) | | (2) 2020, (2) 2025, (2) 2032 | | |
| 1062 | 1062TR | 1082 | 1082TR | .156 (4.0) | .391 (9.9) | (3) 2012, (3) 2016 | | |
| 1064 | 1064TR | 1094 | 1094TR | .278 (7.1) | | | | |



Tape & Reel Spec's: 44mm wide; 32mm pitch; 13 inch reel (200 pieces per reel)

Pad Layout



Looking for pricing, stock, or lifecycle information?

Click below to explore more details on WIN SOURCE:

-  [View 1026 on WIN SOURCE](#)
-  [Keystone Electronics](#) Information

Optimize Your Supply Chain with WIN SOURCE Solutions

-  Global Sourcing Solution
-  Obsolete Management
-  Cost Control Management
-  Shortage Management
-  Alternative Solution
-  Excess Inventory Management