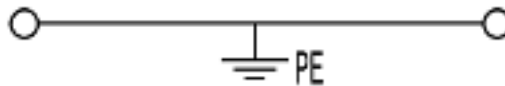
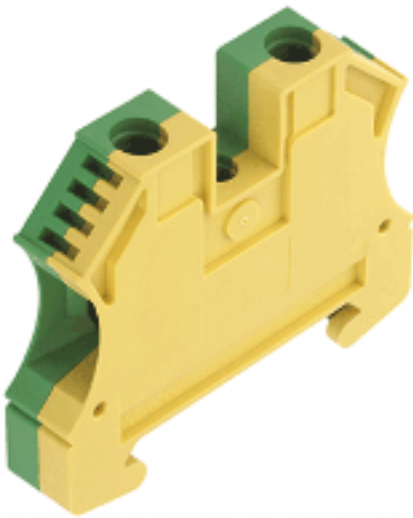




**THE DATASHEET OF
1010300000**





General ordering data

Order No.	1010300000
Part designation	WPE 10
Version	Earth terminal, 10 mm ² , Screw connection, Wemid, green/yellow, TS 35
EAN	4008190031251
Qty.	50 pc(s).

Product notes

Note, technical data	AWG 6/7 and H07V-R16 tighten with 2.4 Nm.
Product description	Their small size compared to the respective rated cross-section makes the modular terminals with the compact design very popular.
Note, accessories	Rail support for insulated installation of terminal rail "SH 2" order no. 0494920000 (10 pcs)

PT OKIECEEx/ATEX rating data

EU-type examination certificate	KEMA98ATEX1683U
Download, German	KEMA98ATEX1683U_d.pdf
Download English	KEMA98ATEX1683U_e.pdf
IECEEx Certificate of Conformity	IECEXULD05.0008U
Download	IECEXULD05.0008U_e.pdf
ATEX conductor cross-section	10 mm ²
IECEEx conductor cross-section	10 mm ²
Voltage when using cross-connections	CrossConnectionGuide.pdf
Operating temperature range	For operating temperature range see EC Design Test Certificate / IEC Ex-Certificate of Conformity
Marking EN 60079-7	Ex e II
Marking ATEX Directive 94/9/EC	Ex II 2 G D

Additional technical data

Colour of insulating material	green/yellow
Connection direction	on side
End plate required	No
Explosion-tested version "Ex e"	Yes

Additional technical data

Installation advice	TS 35
Insulating material	Wemid
Levels cross-connected internally	No
No. of identical terminals	1
No. of levels	1
No. of terminal strips per level	2
Open sides	closed
Operating temperature range	- 50 °C, + 120 °C
Product family	W-Series
Type of connection	Screwed
Type of mounting	Screwed
UL 94 flammability rating of insulation material	V-0
Version	PE terminal

CSA rating data

Min. cross-section (CSA)	AWG 16
Max. cross-section (CSA)	AWG 6

Conductors for clamping (rated connection)

Clamping range, min.	1.31 mm ²
Clamping range, max.	16 mm ²
Type of connection	Screw connection
2nd type of connection	screwed
Connection direction	on side
No. of connections	2
Stripping length	12 mm
Clamping screw	M 4
Blade size	0.6 x 3.5 mm
Tightening torque range	1.2...2.4 Nm
Gauge to IEC 60947-1	B6
Solid, min.	1.5 mm ²
Solid, max.	16 mm ²
Stranded, min.	1.5 mm ²
Stranded, max.	16 mm ²
Flexible, min.	1.5 mm ²
Flexible, max.	16 mm ²
Flexible with ferrule, min. (DIN 46228/1)	1.5 mm ²
Flexible with ferrule, max. (DIN 46228/1)	16 mm ²
Flexible, min., ferrule with plastic collar (DIN 46228 pt 4)	1.5 mm ²
Flexible, max., ferrule with plastic collar (DIN 46228 pt 4)	16 mm ²
AWG conductor size, min.	AWG 16
AWG conductor size, max.	AWG 8
AWG conductor size, min.	1.31 mm ²
AWG conductor size, max.	16 mm ²

Dimensions

Width	9.9 mm
Height of lowest version	47 mm
Length	60 mm

Dimensions

TS 35 offset 32 mm

PE rating data

Centre screw on PE terminals M 3
 PEN function No
 Pollution severity 3
 Rated cross-section 10 mm²
 Rated impulse withstand voltage to adjacent terminal 8 kV
 Rated short-time current 1200 A (10 mm²)
 Rated voltage for adjacent terminal 1,000 V
 Standards IEC 60947-7-2
 Tightening torque range for fixing screw 0.5...1.0 Nm

UL rating data

Min. cross-section (UL) AWG 16
 Max. cross-section (UL) AWG 6

Approvals

Approvals institutes



Downloads

STEP 1010300000_09236_WPE_10_STP.stp

Classifications

eClass 4.1 27-14-03-05
 eClass 5.0 27-14-03-05
 eClass 5.1 27-14-03-05



Similar products

Order No.	Part designation	Version
1016500000	WPE 1.5/ZZ	Earth terminal, 1.5 mm ² , Screw connection, Wemid, green/yellow, TS 35

1036300000	WDK 2.5PE	Earth terminal, 2.5 mm ² , Screw connection, Wemid, green, TS 35
1010000000	WPE 2.5	Earth terminal, 2.5 mm ² , Screw connection, Wemid, green/yellow, TS 35
1016400000	WPE 2.5/1.5/ZR	Earth terminal, 2.5 mm ² , Screw connection, Wemid, green/yellow, TS 35
1010100000	WPE 4	Earth terminal, 4 mm ² , Screw connection, Wemid, green/yellow, TS 35
1905130000	WPE 4/ZZ	Earth terminal, 4 mm ² , Screw connection, Wemid, green/yellow, TS 35
1905120000	WPE 4/ZR	Earth terminal, 4 mm ² , Screw connection, Wemid, green/yellow, TS 35
1010200000	WPE 6	Earth terminal, 6 mm ² , Screw connection, Wemid, green/yellow, TS 35
1042500000	WPE 10/ZR	Earth terminal, 10 mm ² , Screw connection, Wemid, green/yellow, TS 35
1010400000	WPE 16	Earth terminal, 16 mm ² , Screw connection, Wemid, green/yellow, TS 35
1010500000	WPE 35	Earth terminal, 35 mm ² , Screw connection, Wemid, green/yellow, TS 35
1037300000	WPE 70/95	Earth terminal, 95 mm ² , Screw connection, Wemid, green/yellow, TS 35
1019700000	WPE 120/150	Earth terminal, 120 mm ² , Screw connection, Wemid, green/yellow, TS 35

Looking for pricing, stock, or lifecycle information?

Click below to explore more details on WIN SOURCE:

-  [View 1010300000 on WIN SOURCE](#)
-  [Weidmuller Information](#)

Optimize Your Supply Chain with WIN SOURCE Solutions

-  Global Sourcing Solution
-  Obsolete Management
-  Cost Control Management
-  Shortage Management
-  Alternative Solution
-  Excess Inventory Management