



THE DATASHEET OF
0679105700

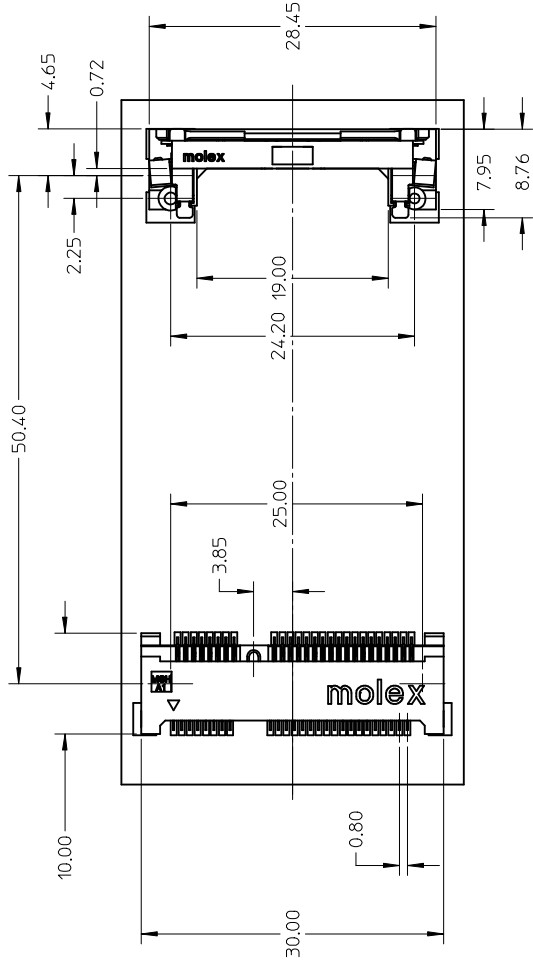


10 9 8 7 6 5 4 3

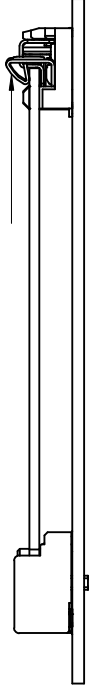
F

LATCH

CONNECTOR



PUSH LATCH TO RELEASE MODULE



67910-5700	5.75
67910-5701	5.75
P/N	DIMENSION A

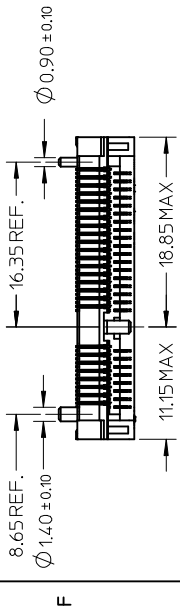
B

QUALITY SYMBOLS =0 =0	GENERAL TOLERANCES (UNLESS SPECIFIED) mm ± --- INCH ± ---	DIMENSION STYLE MM ONLY	SCALE 1:1	
	4 PLACES ± --- 3 PLACES ± --- 2 PLACES ± 0.25 1 PLACE ± 0.25	DRAWN BY DAVID HU	DATE 2005/09/22	TITLE
	ANGULAR ± 3°	CHECKED BY HARVEY	DATE 2005/10/26	APPROVED BY GARY
	DRAFT WHERE APPLICABLE MUST REMAIN WITHIN DIMENSIONS	MATERIAL NO. SEE SHEET 1	DATE 2005/10/26	DOCUMENT NO. SD-
	REVISED EC NO: SH2009-0388 DRW: EZHA0 2008/12/03 CHKD: 2008/12/04 APPR: HWMANG 2008/12/09	DESCRIPTION	THIS DRAWING CONTAINS INCORPORATED AND SHOULD	SIZE A3

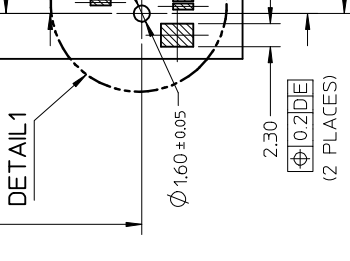
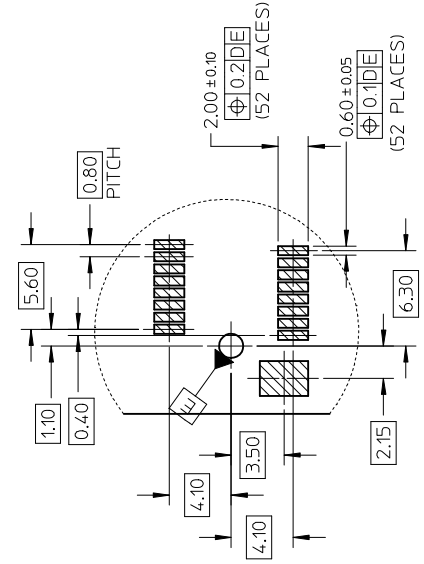
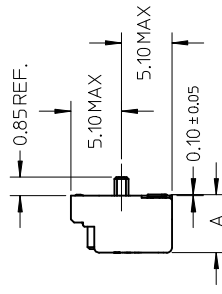
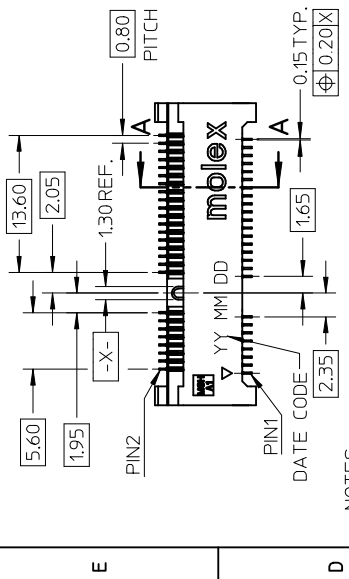
A

td_frame_A3_P_AM_T
Rev. D 2004/06/28

3

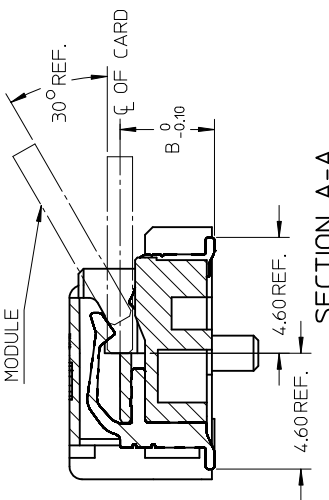


CONNECTOR



- NOTES:
1. MATERIALS: HOUSING: LCP COLOR: BLACK UL94V-0
CONTACT: PHOSPHOR BRONZE
NAIL: BRASS
 2. FINISH: CONTACT: SELECTIVE GOLD IN CONTACT AND SOLDER AREA
UNDERPLATED NICKEL OVERALL
NAIL: TIN IN SOLDER AREA
UNDERPLATED NICKEL OVERALL
 3. THE MODULE CARD REFERENCE MINIPCI-E CARD
ELECTROMECHANICAL SPECIFICATION
 4. DATUM D IS THE TOP OF SURFACE OF PCB
 5. MATCHED LATCH 48099**** SERIES.
 6. PART 67910**** COMPLIANT TO ROHS DIRECTIVE 2002/95/EC
AND ELV DIRECTIVE 2000/53/EC.

DETAIL 1
Scale 3:1



SECTION A-A

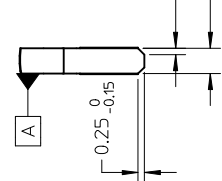
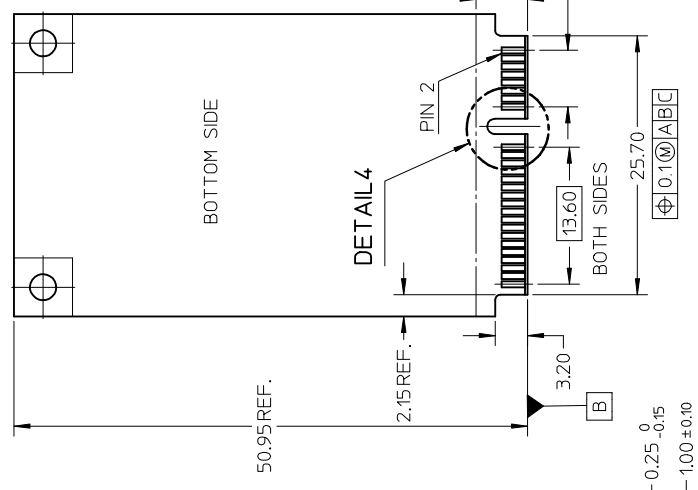
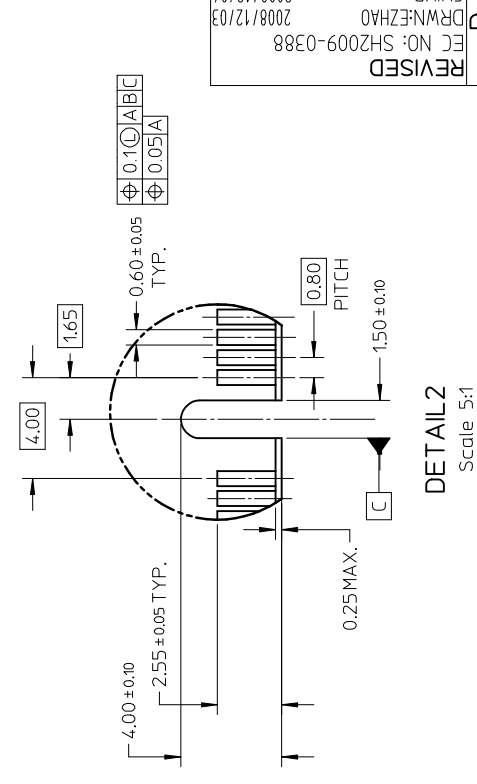
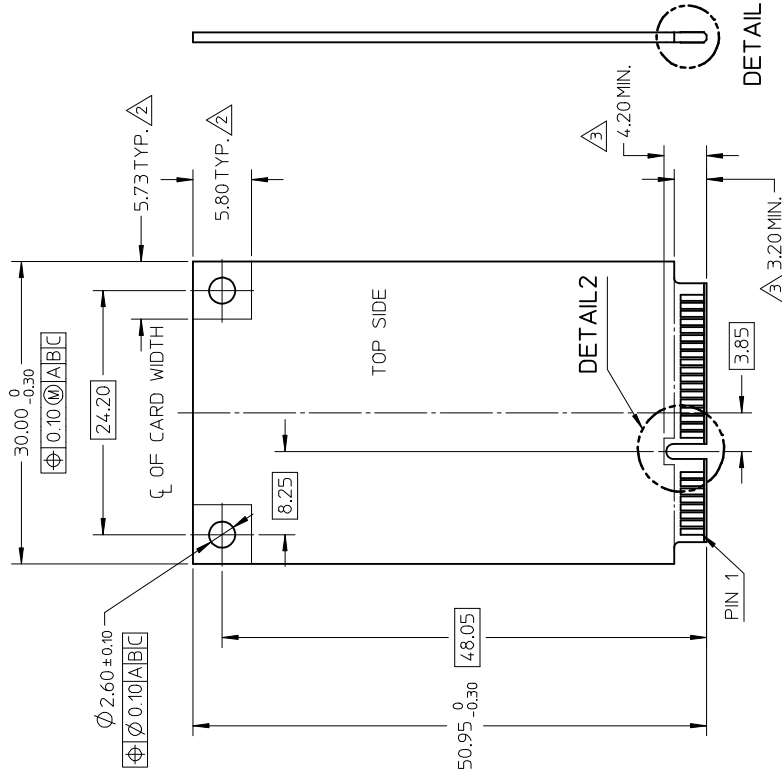
Scale 5:1

REV	DESCRIPTION	QUALITY SYMBOLS	GENERAL TOLERANCES (UNLESS SPECIFIED)	MM	INCH	DIMENSION STYLE	SCALE
D	REVISED FC NO: SH2009-0388 DRW: NZH40 CHKD: 2008/12/04 APPR: HWMANG 2008/12/09	▶=0 ◻=0	4 PLACES ± --- 3 PLACES ± --- 2 PLACES ± 0.25 1 PLACE ± 0.25	± --- ± --- ± --- ± ---	± --- ± --- ± --- ± ---	MM ONLY	1:1
						DRAWN BY	TITLE
						DAVID HU	2005/09/22
						CHECKED BY	DATE
						HARVEY	2005/10/26
						APPROVED BY	DATE
						GARY	2005/10/26
						MATERIAL NO.	DOCUMENT NO.
						SEE SHEET 1	SD-
						SIZE	THIS DRAWING CONTAINS 1
						A3	INCORPORATED AND SHOULD

RECOMM

NOTES:
1. PIN NUMBER

2. COMPONENT KEEP OUT ZONE
3. COMPONENT



DETAIL 3
Scale 5:1

REV	DESCRIPTION	QUALITY SYMBOLS	GENERAL TOLERANCES (UNLESS SPECIFIED)	DIMENSION STYLE	SCALE
	APP: HWMANG 2008/12/09	0	MM INCH	MM ONLY	1:1
	CHKD: 2008/12/04	0	4 PLACES \pm ---	DRAWN BY	TITLE
	DRW: EZH40 2008/12/03	0	3 PLACES \pm ---	DAVID HU	2005/09/22
	EC NO: SH2009-0388	0	2 PLACES ± 0.25	HARVEY	2005/10/26
REVISED	D	1 PLACE ± 0.25	APPROVED BY	GARY	2005/10/26
REVISED	D	ANGULAR $\pm 3^\circ$	MATERIAL NO.	SEE SHEET 1	SD-
REVISED	D		DRAFT WHERE APPLICABLE MUST REMAIN WITHIN DIMENSIONS	SIZE A3	THIS DRAWING CONTAINS INCORPORATED AND SHOULD

Looking for pricing, stock, or lifecycle information?

Click below to explore more details on WIN SOURCE:

 [View 0679105700 on WIN SOURCE](#)

 [Molex, LLC Information](#)

Optimize Your Supply Chain with WIN SOURCE Solutions

-  Global Sourcing Solution
-  Obsolete Management
-  Cost Control Management
-  Shortage Management
-  Alternative Solution
-  Excess Inventory Management