



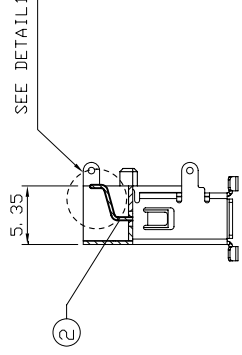
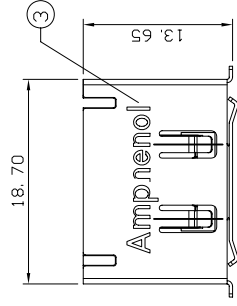
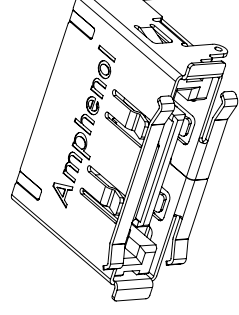
**THE DATASHEET OF
G091131300LF**



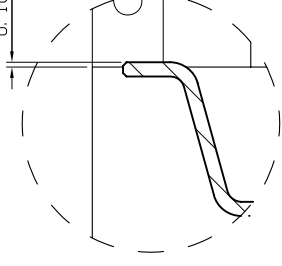
This document is the property of Amphenol Corporation and is delivered on the express condition that it is not to be disclosed, reproduced, or distributed in any form without the prior written consent of Amphenol Corporation, without its prior consent and that no right is granted to disclose or to use any information in this document.
 The marking on this product doesn't contain environmental hazardous materials per Material Specification SS-00259 for Sony GP compliant or per directive 2002/95/EC for RoHS compliant.

CUSTOMER DRAWING

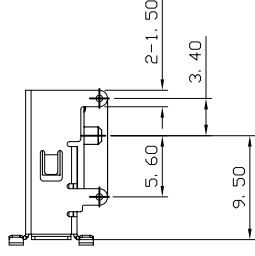
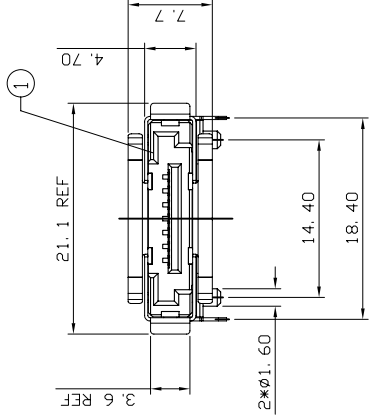
SYM	ECN
A	NE-
B	NE-
C	NE-
D	NE-



0.10^{+0.05}_{-0.20}



DETAIL 1



ITEM	DESCRIPTION
1	INSULATOR
2	CONTACT
3	SHELL

- NOTES:
 1.SPEC. FOLLOWS S-ATA2 GENERAL SPECIFICATION.
 2.LEAD FREE
 3.TAIL COPLANARITY TO BE 0.1MM MAX.
 4.THIS PRODUCT DOESN'T CONTAIN ENVIRONMENTAL HAZARDOUS MATERIALS PER DIRECTIVE 2002/95/EC FOR RoHS.
 5.PACKING MUST BE PER AMPHENOL PRODUCT SPECIFICATION PKS-001-EMJ1-03.

TOLERANCE m/m	APPROVALS	DATE	TITLE
X. ±0.30	DRAWN		T371
X.X ±0.25	CHECKED		PLUG BOARD
X.XX ±0.15	APPROVED		NORMAL SIZE
X.XXX ±0.08			
ANGULAR ±2°			
UNLESS OTHERWISE SPECIFIED			



UNIT

MM


SIZE

A4

PART NO.

Looking for pricing, stock, or lifecycle information?

Click below to explore more details on WIN SOURCE:

-  [View G091131300LF on WIN SOURCE](#)
-  [Amphenol Information](#)

Optimize Your Supply Chain with WIN SOURCE Solutions

-  Global Sourcing Solution
-  Obsolete Management
-  Cost Control Management
-  Shortage Management
-  Alternative Solution
-  Excess Inventory Management