



**THE DATASHEET OF  
BFCN-1262+**



# LTCC Bandpass Filter

## BFCN-1262+

50Ω      12100 to 13200 MHz



CASE STYLE: FV1206-9

### The Big Deal

- Small size 3.2mm x 1.6mm
- Pass band (12100-13200 MHz)
- Very high rejection over wide band
- Sharp rejection peaks close to stop band

### Product Overview

The BFCN-1262+ LTCC Band Pass Filter achieves a miniature size and high repeatability of performance. Wrap-around terminations minimize variations in performance due to parasitics. Covering 12100-13200 MHz, these units offer excellent rejection over a wide stopband.

### Key Features

Feature	Advantages
Small Size (3.20mm x1.6 mm)	Allows for high layout density of circuit boards, while minimizing effects of parasitics.
Rejection peaks close to pass band	Provides good rejection of signals close to the pass band, for improved system performance.
Wide stopband	No regrowth at 2nd harmonic permits filter to be used in presence of wideband undesired signals.
LTCC construction	Provides a rugged package that is well suited for tough environments including high humidity and high temperature extremes.

Ceramic

# Bandpass Filter

50Ω 12100 to 13200 MHz

**BFCN-1262+**



Generic photo used for illustration purposes only

CASE STYLE: FV1206-9

**+RoHS Compliant**

The +Suffix identifies RoHS Compliance. See our web site for RoHS Compliance methodologies and qualifications



Available Tape and Reel at no extra cost

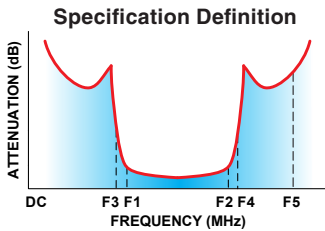
Reel Size	Devices/Reel
7"	20, 50, 100, 200, 500, 1000, 3000

## Features

- Small size
- Temperature stable
- Hermetically sealed
- LTCC construction

## Applications

- Harmonic Rejection
- Transmitters / Receivers



## Electrical Specifications<sup>(1,2)</sup> at 25°C

Parameter	F#	Frequency (MHz)	Min.	Typ.	Max.	Unit
Pass Band	Center Frequency	—	—	12600	—	MHz
	Insertion Loss	F1-F2	12100-13200	—	5	dB
	VSWR	F1-F2	12100-13200	—	1.7	:1
	Insertion Loss	—	12300-13000	—	4	dB
Stop Band, Lower	Insertion Loss	DC-F3	DC-9760	30	45	dB
	VSWR	DC-F3	DC-9760	—	20	:1
Stop Band, Upper	Insertion Loss	F4-F5	15170-25000	20	30	dB
	Insertion Loss	F5-F6	25000-35000	15	20	dB
	VSWR	F4-F6	15170-35000	—	10	:1
	VSWR	F4-F6	15170-35000	—	10	:1

1. Measured on Mini-Circuits Characterization Test Board TB-1004+ with feedline losses removed by normalization of S12 and S21 traces to measurement of TB thru-line.

2. This filter is not intended for use as a DC Blocking circuit element. In Application where DC voltage is present at either input or output ports, blocking capacitors are required at the corresponding RF port.

## Maximum Ratings

Operating Temperature	-55°C to +100°C
Storage Temperature	-55°C to +100°C
RF Power Input*	2W at 25°C

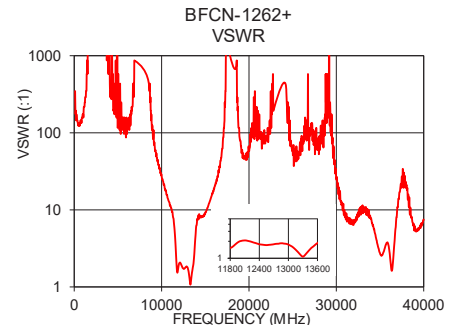
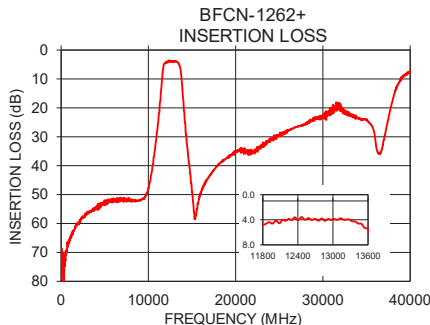
\*Passband rating, derate linearly to 0.5W at 100°C ambient  
Permanent damage may occur if any of these limits are exceeded.

## Typical Performance Data at 25°C

Frequency (MHz)	Insertion Loss (dB)	VSWR (:1)
1000	65.98	157.93
5000	53.71	133.63
9000	51.86	91.43
10000	47.72	27.59
11200	22.02	9.38
11800	4.84	1.53
12400	4.07	1.77
13000	3.90	1.75
13600	5.50	1.86
14000	17.18	6.28
20000	35.36	59.91
25000	29.53	59.91
32000	18.59	6.97
36000	30.91	3.34
40000	7.75	7.44

## Pad Connections

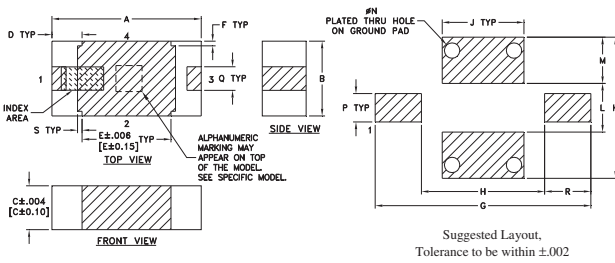
Input	1
Output	3
Ground	2



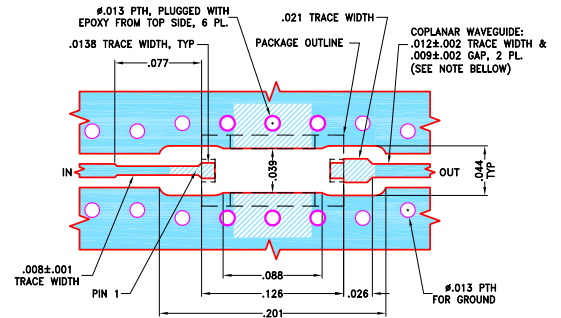
# Bandpass Filter

# BFCN-1262+

## Outline Drawing



## Demo Board MCL P/N: TB-1004+ Suggested PCB Layout (PL-613)



### NOTES:

- TRACE WIDTH AND GAP PARAMETERS ARE SHOWN FOR ROGERS R04350B WITH DIELECTRIC THICKNESS .0066"±.0007". COPPER: 1/2 OZ. EACH SIDE. FOR OTHER MATERIALS TRACE WIDTH AND GAP MAY NEED TO BE MODIFIED.
- BOTTOM SIDE OF THE PCB IS CONTINUOUS GROUND PLANE.
- UNIT LAND PATTERN WAS OPTIMIZED FOR BETTER PERFORMANCE.

- DENOTES PCB COPPER LAYOUT WITH SMOBC (SOLDER MASK OVER BARE COPPER).
- DENOTES COPPER LAND PATTERN FREE OF SOLDER MASK.

### Pad Connections

Input	1
Output	3
Ground	2

Product Marking: JQ

### Outline Dimensions ( $\frac{\text{inch}}{\text{mm}}$ )

A	B	C	D	E	F	G	H	J
.126	.063	.037	.026	.075	.004	.182	.104	.069
3.20	1.60	0.94	0.66	1.91	0.10	4.62	2.64	1.753
K	L	M	N	P	Q	R	S	wt
0.119	0.041	.039	.013	.024	.020	.039	.004	grams
3.023	1.041	0.99	0.33	0.61	0.51	0.99	0.10	.020

### Additional Notes

- Performance and quality attributes and conditions not expressly stated in this specification document are intended to be excluded and do not form a part of this specification document.
- Electrical specifications and performance data contained in this specification document are based on Mini-Circuit's applicable established test performance criteria and measurement instructions.
- The parts covered by this specification document are subject to Mini-Circuits standard limited warranty and terms and conditions (collectively, "Standard Terms"); Purchasers of this part are entitled to the rights and benefits contained therein. For a full statement of the Standard Terms and the exclusive rights and remedies thereunder, please visit Mini-Circuits' website at [www.minicircuits.com/MCLStore/terms.jsp](http://www.minicircuits.com/MCLStore/terms.jsp)



## Looking for pricing, stock, or lifecycle information?

Click below to explore more details on WIN SOURCE:

 [View BFCN-1262+ on WIN SOURCE](#)

 [Mini-Circuits Information](#)

## Optimize Your Supply Chain with WIN SOURCE Solutions

-  Global Sourcing Solution
-  Obsolete Management
-  Cost Control Management
-  Shortage Management
-  Alternative Solution
-  Excess Inventory Management