



THE DATASHEET OF
L829-1J1T-43



MagJack® ICM

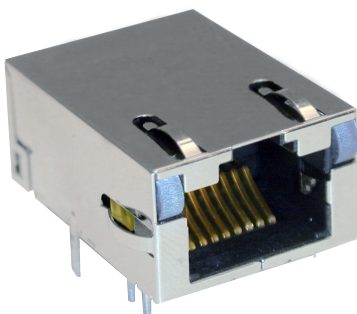
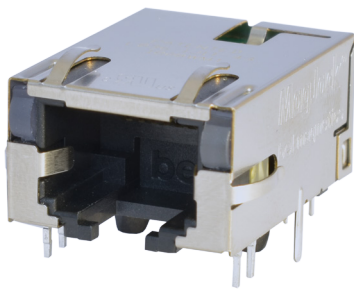
Dura-Jack ICMs

Single Port 1GBase-T

Bel Magnetic Solutions designed the “Dura-Jack” Single Port, 1GBase-T ICMs as highly durable, versatile ICMs that are also cost effective. With their low-profile height and compact construction, these single port, 1Gbase-T ICMs can be used in almost any application. Available in many configurations, these ICMs are backward compatible to 10/100BT, forward compatible to 2.5G/5G and 10G, making them compatible with all major 1Gbase-T PHYs.

Features & Benefits

- Low height, compact design
- Cost effective
- Versatility
- Can fit into any end-product design
- Many options for circuits, LEDs and operating temperatures
- A great value for the performance level



Specifications

- Meets all IEEE 802.3 1GBase-T electrical requirements including RL, IL, Hi-pot and Common Mode parameters
- There are options for -40°C to 85°C temperature ranges.
- 100% Hi-pot tested in production
- Comes with many different LED color combinations and options
- 30 or 50 micro-inches of gold plated contacts as required by the TIA 1096/FCC 47, Part 68
- 2 options for RJ45 plug-tab up or tab-down depending on the application need
- Lead-free wave-solder compatible
- EMI-spring tabs on the shield for enhanced EMI and ESD performance
- UL recognized
- RoHS 6/6 compliant



Applications

- Management ports
- Modems
- Appliances
- Audio equipment
- Networking devices
- Industrial ethernet devices
- Single-board computers

Part Numbers

| Part Number | Port Configuration |
|--------------|--------------------|
| L829-1J1T-43 | Tab-up |
| L836-1J1T-43 | Tab-down |

Looking for pricing, stock, or lifecycle information?

Click below to explore more details on WIN SOURCE:

 [View L829-1J1T-43 on WIN SOURCE](#)

 [Bel Fuse Inc. Information](#)

Optimize Your Supply Chain with WIN SOURCE Solutions

-  Global Sourcing Solution
-  Obsolete Management
-  Cost Control Management
-  Shortage Management
-  Alternative Solution
-  Excess Inventory Management