



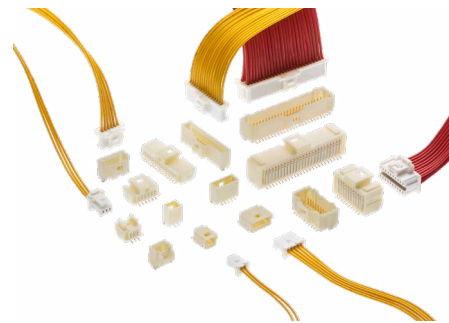
THE DATASHEET OF
5013311407



Pico-Clasp Wire-to-Board Connectors

molex

Pico-Clasp 1.00mm pitch Wire-to-Board connectors offer a variety of mating styles and orientations plated in Tin or Gold to provide design flexibility in a vast array of compact applications. Newly added 0.38 and 0.76µm Gold Plated Versions.

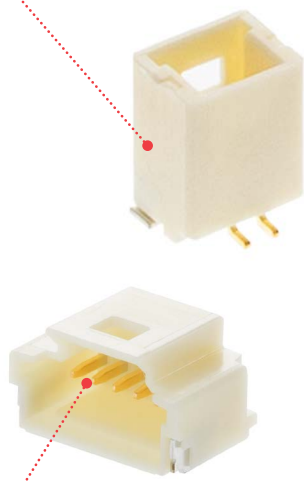


Pico-Clasp Connectors in Single and Dual-Row Configurations

Features and Advantages

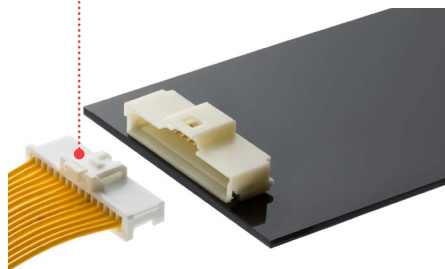
Inner Friction Lock

Space saving



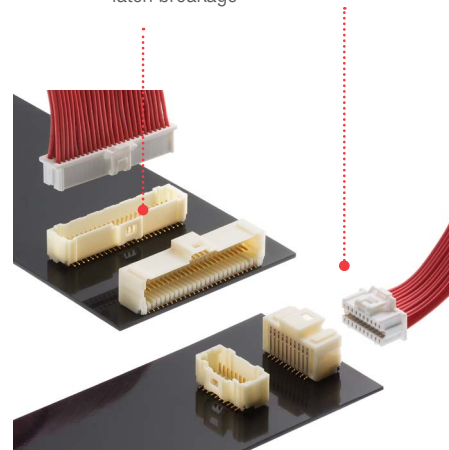
Inner Positive Lock

Secure mating retention.
Easy to mate and unmate



Inner Positive Lock

Offers secure mating retention with low mating and unmating forces. Prevents wire tangling and latch breakage



Thick gold plating options (0.1, 0.38 and 0.76µm)

Superior reliability and durability in harsh environments

Smallest pitch for positive lock Wire-to-Board crimp System

Provides space savings for mounting other components

SMT Mounting

Provides assembly and cost efficiencies. Automated assembly reduces manual labor processes

Applications

Consumer

- Drone, UAV
- Smart meter
- Air conditioner
- TV
- Mobile POS Terminals
- Any other innovative electronic devices



Mobile POS Terminals



Servo Motor



Drone

Medical

- Patient monitoring



Patient Monitor

Industrial

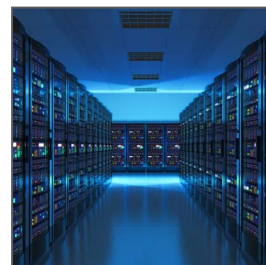
- Servo motor



Automotive module

Automotive

- Electronic module



Server

Telecommunications / Networking

- Server

Specifications

REFERENCE INFORMATION

Packaging: Terminals – Reel
Housings, Retainers – Bag
Headers – Emboss tape on reel
Designed In: Millimeters
RoHS: Yes
Glow Wire Compliant: No
Halogen Free: No

ELECTRICAL

Voltage (max.): 50V
Current (max.): See Derating information
Contact Resistance: 20 milliohms Max.
Dielectric Withstanding Voltage:
250V AC, 1 minute
Insulation Resistance:
100 Megaohms min.
AWG: 28, 30, 32
UL: 1571

MECHANICAL

Durability (min.): 30 cycles

PHYSICAL

Terminal: Phosphor Bronze
Housing: Nylon
Plating: Tin or 0.1/0.38/0.76µm Gold
Operating Temperature: -40 to +105°

Derating Information

SINGLE ROW

AWG#	Amps[A]			
	2-circuit	5-circuit	10-circuit	15-circuit
28	2.0	1.5	1.0	1.0
30	1.5	1.0	1.0	1.0
32	1.5	1.0	0.8	0.8

DUAL ROW

AWG#	Amps[A]	
	20-circuit	50-circuit
28	1.0	
30	1.0	
32	0.8	

- (1) Values are for REFERENCE ONLY.
- (2) Current deratings are based on not exceeding 30° Temperature.
- (3) PCB trace design can greatly affect temperature rise results in Wire-to-Board applications.
- (4) Data is for all circuits powered.
- (5) All data are interpolated information.

Ordering Information

Circuit	1 or 2 Rows	Plating	Locking: Friction/ Positive	Vertical	Right Angle	Crimp Housing	Terminal	AWG
2 to 15	Single	Tin	2-5 circuit : Friction 6-15 : Positive Inner	501331	501568	501330	501334	28 to 32
		0.1µm Gold		504449	202396		501193-3000	
		0.38µm Gold		203556	203558		501193-6000	
		0.76µm Gold		203557	203559		501193-5000	
3 to 5	Single	Tin	Positive Outer	501940	501953	501939	501334	28 to 32
		0.1µm Gold		501940	501953		501193-3000	
		0.38µm Gold		203560	203562		501193-6000	
		0.76µm Gold		203561	203563		501193-5000	
20, 30, 40, 50	Dual	0.1µm Gold	Positive Inner	501190	501571	501189	501193-3000	28 to 32
		0.38µm Gold		203564	203566		501193-6000	
		0.76µm Gold		203565	203567		501193-5000	

www.molex.com/link/picoclasp.html

Looking for pricing, stock, or lifecycle information?

Click below to explore more details on WIN SOURCE:

 [View 5013311407 on WIN SOURCE](#)

 [Molex, LLC Information](#)

Optimize Your Supply Chain with WIN SOURCE Solutions

-  Global Sourcing Solution
-  Obsolete Management
-  Cost Control Management
-  Shortage Management
-  Alternative Solution
-  Excess Inventory Management